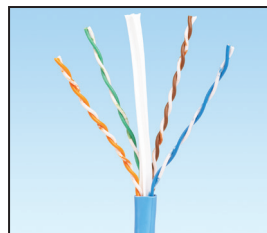


TX6000™ Enhanced Category 6 U/UTP Copper Cable

specifications

Category 6 cable shall exceed IEC 61156-5 and ANSI/TIA-568-C.2 Category 6 component standards. The conductors shall be 23 AWG construction with HDPE insulation. The copper conductors shall be twisted in pairs, with all four pairs separated by a cross-divider and covered by a flame retardant PVC jacket.



technical information

| | |
|--------------------------------|--|
| Electrical performance: | Certified channel performance in a 4-connector configuration up to 100 meters and exceeds ISO 11801 2nd Edition Class E and ANSI/TIA-568-C.2 Category 6 standards at swept frequencies up to 250 MHz |
| | Certified component performance up to 100 meters and exceeds the component requirement of IEC 61156-5 and ANSI/TIA-568-C.2 Category 6 component standards at swept frequencies up to 250 MHz |
| Conductor/insulator: | 23 AWG solid copper insulated with HDPE |
| Flame rating: | UL 1685 |
| PoE compliance: | Meets IEEE 802.3af and IEEE 802.3at for PoE applications |
| Installation tension: | 110 N (25 lbf) maximum |
| Temperature rating: | 0°C to 50°C (32°F to 122°F) during installation -20°C to 60°C (-4°F to 140°F) during operation |
| Cable jacket: | Flame retardant PVC |
| Cable diameter: | 5.7mm (0.225 in.) nominal |
| Cable weight: | 11 kg/305m (24 lbs./1000 ft.) |
| Packaging: | 305m (1000 ft.), reel in a box, 14 kg/305m (30 lbs./1000 ft.) Package tested to ISTA Procedure 1A |

key features and benefits

| | |
|---|---|
| Third party tested | Cable has been tested as part of the TX6000™ Copper Cabling System by an independent laboratory and complies with the electrical channel requirements of the following standards: ISO/IEC 11801 2nd Edition: 2002, EN 50173-1: 2002, and ANSI/TIA-568-C.2 |
| Guaranteed channel performance above the standards | Industry leading channel performance above the TIA/ISO standards with headroom guarantee |
| Cross-divider | Separates pairs for exceptional cable performance |
| Reel-in-a-box | Ensures proper performance and provides quick installation |
| Tested beyond the standards | Cable has been characterized to 550 MHz, 300 MHz above the standard |
| Descending length cable markings | Easy identification of remaining cable reduces installation time and cable scrap |

applications

TX6000™ UTP Copper Cable is a component of the Panduit® TX6000™ Copper Cabling System. Interoperable and backward compatible, this end-to-end system provides design flexibility to protect network investments well into the future. With certified performance to the ISO 11801 Class E and ANSI/TIA-568-C.2 Category 6 standards, this system is ideal for today's high performance workstation applications. Usage of the TX6000™ Copper Cabling System include:

- Ethernet 10BASE-T, 100BASE-T (Fast Ethernet), 1000BASE-T (Gigabit Ethernet), 10GBASE-T (10 Gigabit Ethernet over limited distances as specified in the industry 10GBASE-T standards)
- 155 Mb/s ATM, 622 Mb/s ATM, 1.2 Gb/s ATM
- Token Ring 4/16

www.panduit.com

TX6000™ Copper Cabling System

TX6000™ UTP Copper Cable

CM: PUC6004*

Mini-Com® TX6™ UTP PLUS Jack Module

Jack module: CJ688TG**

TX6™ PLUS UTP Patch Cords

Meter lengths: UTPSP^MY
Foot lengths: UTPSP^AY

DP6™ PLUS Angled Punchdown Patch Panels

24-port, 1 RU: DPA24688TGY
48-port, 2 RU: DPA48688TGY

DP6™ PLUS Flat Punchdown Patch Panels

12-port: DP12688TGY
24-port, 1 RU: DP24688TGY
48-port, 2 RU: DP48688TGY

GP6™ PLUS Category 6 Punchdown System

See website (www.panduit.com) or catalog for complete system information

Cable Prep Tools

Wire snipping tool: CWST

Wire stripping tool: CJUST

*For colors and pallet configurations, reference back page.

**To designate color, add suffix IW (Off White), EI (Electric Ivory), IG (International Gray), WH (White), BL (Black), OR (Orange), RD (Red), BU (Blue), GR (Green), YL (Yellow), or VL (Violet).

^For lengths 1 to 10 meters (increments of one meter) and 0.5, 1.5, 2.5, 15, 20, 25, 30, 35, 40 meters, change the length designation in the part number to the desired length. For standard cable colors other than Off White, add suffix BL (Black), BU (Blue), RD (Red), GR (Green), YL (Yellow), OR (Orange), or VL (Violet) after the M in the part number. For example, the part number for a blue 15-meter patch cord is UTPSP15MBUY.

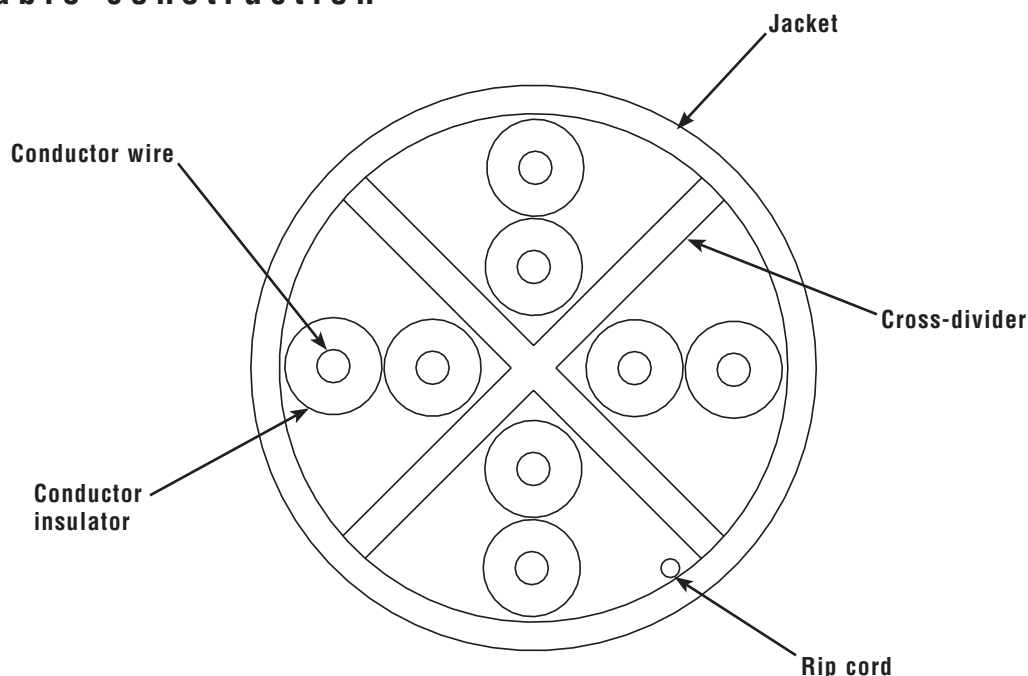
^^For lengths 1 to 20 feet (increments of one foot) and 25, 30, 35, 40 feet, change the length designation in the part number to the desired length. For standard cable colors other than Off White, add suffix BL (Black), BU (Blue), RD (Red), YL (Yellow), GR (Green), OR (Orange), or VL (Violet) before the Y at the end of the part number. For example, the part number for a blue 5-foot patch cord is UTPSP5BUY.

TX6000™ Enhanced Category 6 U/UTP Copper Cable

additional specifications

| Mechanical Test | |
|---------------------------------------|-------------------------------------|
| Ultimate Breaking Strength | >400 N (90 lbf) |
| Minimum Bend Radius | 4 x cable diameter |
| Electrical Test | |
| DC Resistance | <9.38 Ohm per 100m (328 ft.) |
| DC Resistance Unbalance | <5% |
| Mutual Capacitance | <5.6 nF per 100m (328 ft.) at 1 kHz |
| Capacitance Unbalance | <330 pF per 100m (328 ft.) at 1 kHz |
| Characteristic Impedance | 100 Ohm +/-15% up to 100 MHz |
| Nominal Velocity of Propagation (NVP) | 67% |
| Operating Voltage, Maximum | 80V |

cable construction



For other color or pallet configurations, contact customer service.

WORLDWIDE SUBSIDIARIES AND SALES OFFICES

PANDUIT CANADA
Markham, Ontario
cs-cdn@panduit.com
Phone: 800.777.3300

PANDUIT EUROPE LTD.
London, UK
cs-emea@panduit.com
Phone: 44.20.8601.7200

PANDUIT SINGAPORE PTE. LTD.
Republic of Singapore
cs-ap@panduit.com
Phone: 65.6305.7575

PANDUIT JAPAN
Tokyo, Japan
cs-japan@panduit.com
Phone: 81.3.6863.6000

PANDUIT LATIN AMERICA
Guadalajara, Mexico
cs-la@panduit.com
Phone: 52.33.3777.6000

PANDUIT AUSTRALIA PTY. LTD.
Victoria, Australia
cs-aus@panduit.com
Phone: 61.3.9794.9020

For a copy of Panduit product warranties, log on to www.panduit.com/warranty

For more information

Visit us at www.panduit.com

Contact Customer Service by email: cs@panduit.com
or by phone: 800.777.3300

PANDUIT®

©2015 Panduit Corp.
ALL RIGHTS RESERVED.
COSP310--WW-ENG
Replaces WW-COSP141-ENG
3/2015