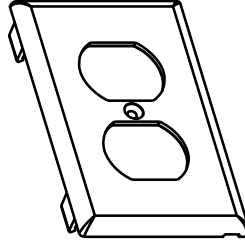
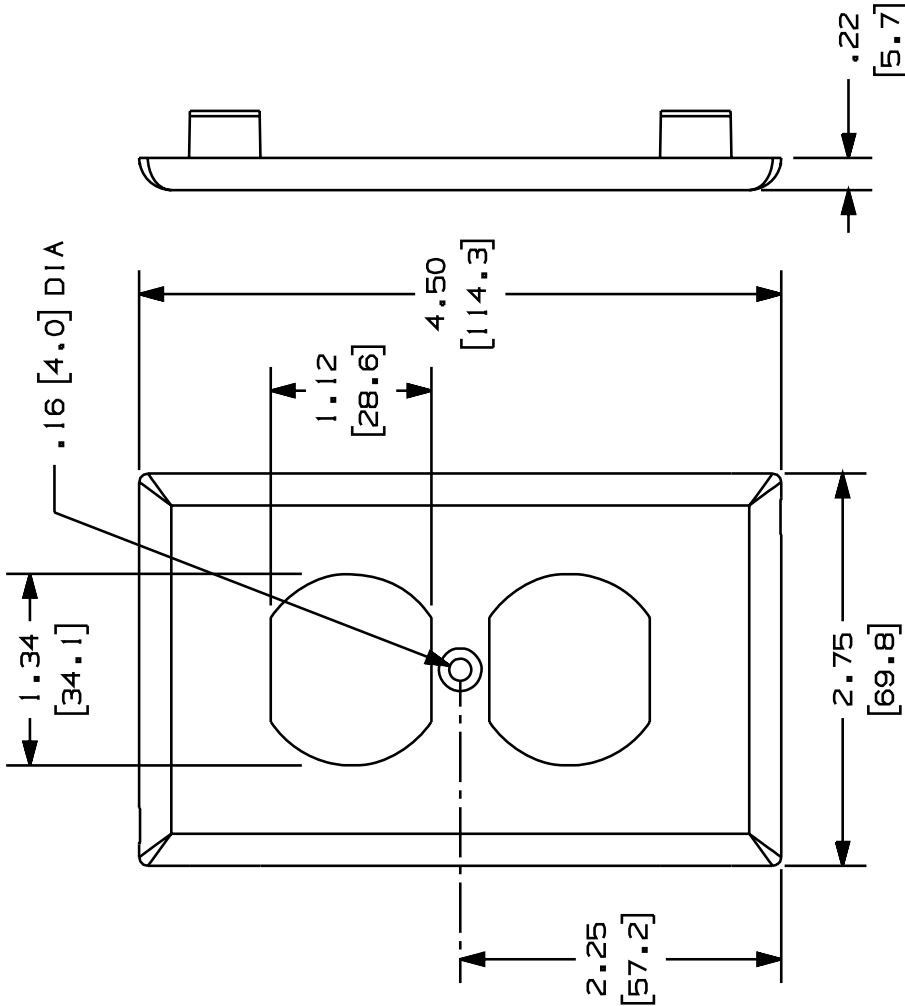


THIS COPY IS PROVIDED ON A RESTRICTED BASIS AND IS NOT TO BE USED IN ANY WAY DETRIMENTAL TO THE INTERESTS OF PANDUIT CORP.

PANDUIT P/N	WEIGHT
T70PS	.52 LB/10 PCS (237.9/10 PCS)

**NOTES:**

- SEE CURRENT CATALOG FOR ADDITIONAL PART SUFFIXES TO INDICATE COLOR AND OR PACKAGE QUANTITY.
- ONE (1) #6-32 X 1/2" SLOTTED OVAL HEAD SCREW IS INCLUDED WITH THIS FACEPLATE. THE T70PS FACEPLATE CAN BE USED WITH PANDUIT SURFACE RACEWAYS AND BOXES THAT ACCEPT 70mm SNAP-ON FACEPLATES (INCLUDES: T-70, TWIN-70, TE70, TG-70, ETC.)
- THE T70PS FACEPLATE ACCEPTS PANDUIT FOUR MODULE "106" DUPLEX MODULE FRAME - CF1064 (OR "106" COMMUNICATION MODULE FRAMES OF MOST OTHER MANUFACTURERS)
- THE T70PS FACEPLATE IS NOT INTENDED FOR USE WITH ELECTRICAL DEVICES.
- DIMENSIONS IN PARENTHESES ARE IN METRIC.



CAD FILENAME/LAYERS

D37239BB\_DC\_T70PS\_00B.PRT

**PANDUIT**

CORP. TINLEY PARK, ILLINOIS

T-70 SINGLE GANG 106 DUPLEX COMMUNICATION SNAP-ON FACEPLATE (WITH SCREW HOLES TO MOUNT A MODULE FRAME) CUSTOMER DRAWING

UNLESS OTHERWISE SPECIFIED, DIMENSIONAL TOLERANCES ARE:  
 ( .XX ) ± .010 ANGLES : 1°  
 ( .XXX ) ± .005

UNLESS OTHERWISE SPECIFIED, ALL DIMENSIONS ARE GIVEN IN INCHES, THIRD ANGLE PROJECTION.

DRAWN BY PM

MAT'L: NONE

DATE 9-27-99

PVC

DWG 37239-04

CHK'D HIW

ECN · R

SIZE A

SUP

DESCRIPTION

CHK

BY

DATE

REV

A. REVISED NOTE 3 AND 4.

37239-04

RELEASED TO PRODUCTION

37239-04

HIW

HIW

HIW

HIW

HIW

HIW