



Hewlett Packard
Enterprise

HPE Comware-Based Devices Transceiver Modules

User Guide (10G)

© Copyright 2017, 2022 Hewlett Packard Enterprise Development LP

The information contained herein is subject to change without notice. The only warranties for Hewlett Packard Enterprise products and services are set forth in the express warranty statements accompanying such products and services. Nothing herein should be construed as constituting an additional warranty. Hewlett Packard Enterprise shall not be liable for technical or editorial errors or omissions contained herein.

Confidential computer software. Valid license from Hewlett Packard Enterprise required for possession, use, or copying. Consistent with FAR 12.211 and 12.212, Commercial Computer Software, Computer Software Documentation, and Technical Data for Commercial Items are licensed to the U.S. Government under vendor's standard commercial license.

Links to third-party websites take you outside the Hewlett Packard Enterprise website. Hewlett Packard Enterprise has no control over and is not responsible for information outside the Hewlett Packard Enterprise website.

Acknowledgments

Intel®, Itanium®, Pentium®, Intel Inside®, and the Intel Inside logo are trademarks of Intel Corporation in the United States and other countries.

Microsoft® and Windows® are either registered trademarks or trademarks of Microsoft Corporation in the United States and/or other countries.

Adobe® and Acrobat® are trademarks of Adobe Systems Incorporated.

Java and Oracle are registered trademarks of Oracle and/or its affiliates.

UNIX® is a registered trademark of The Open Group.

Contents

Overview	1
List of 10-Gigabit transceiver modules and network cables	1
About optical transceiver modules	1
Data rate	1
Transmission distance	1
Central wavelength	2
Fiber	2
LC connector	3
Optical parameters	4
SFP+ transceiver modules	5
SFP+ optical transceiver modules	5
Models and specifications	5
SFP+ copper cables	8
Models and specifications	9
SFP+ active optical cables	9
Models and specifications	9
XFP transceiver modules	10
Models and specifications	10
CX4 copper cables	13
Models and specifications	13
10-Gigabit Ethernet transceiver modules compatibility matrix	14
10-Gigabit Ethernet transceiver modules	14
Switching minimum software release requirements	15
HPE FlexFabric 12900 switch series minimum software version requirements	15
HPE FlexFabric 12900E switch series minimum software version requirements	19
HPE FlexFabric 11900 switch series minimum software version requirements	21
HPE FlexFabric 10500 switch series minimum software version requirements	22
HPE FlexFabric 7900 switch series minimum software version requirements	31
HPE FlexFabric 7500 switch series minimum software version requirements	32
HPE 6127XLG Blade switch series minimum software version requirements	38
HPE 6125XLG Blade switch series minimum software version requirements	39
HPE FlexFabric 5980 switch series minimum software version requirements	40
HPE FlexFabric 5950 switch series minimum software version requirements	40
HPE FlexFabric 5945 switch series minimum software version requirements	42
HPE FlexFabric 5940 switch series minimum software version requirements	43
HPE FlexFabric 5930 switch series minimum software version requirements	45
HPE FlexFabric 5920 switch series minimum software version requirements	46
HPE FlexFabric 5900 switch series minimum software version requirements	47
HPE FlexFabric 5830 switch series minimum software version requirements	50
HPE FlexFabric 5710 Switch series minimum software version requirements	51
HPE FlexFabric 5700 switch series minimum software version requirements	53
HPE FlexNetwork 5520 HI switch series minimum software version requirements	55
HPE FlexNetwork 5140 EI switch series minimum software version requirements	59
HPE FlexNetwork 5130 XI switch series minimum software version requirements	64
Document conventions and icons	66
Conventions	66
Network topology icons	67
Support and other resources	68
Accessing Hewlett Packard Enterprise Support	68
Accessing updates	68
Websites	69

Customer self repair.....	69
Remote support	69
Documentation feedback	69
Index	71

Overview

This document describes 10-Gigabit transceiver modules and cables available for HPE Comware-based devices.

List of 10-Gigabit transceiver modules and network cables

Transceiver module type	Connector type
SFP+ transceiver modules	
SFP+ optical transceiver module	LC
SFP+ copper cable (for interconnecting devices)	N/A
SFP+ active optical cable	
XFP transceiver modules	
10-Gigabit small form-factor pluggable (XFP) module (transceiver)	LC
CX4 copper cables	
10-Gigabit CX4 copper cable (for interconnecting devices)	N/A

NOTE:

- HPE 10-Gigabit transceiver modules and cables are subject to change over time. For the most recent list of HPE 10-Gigabit transceiver modules and cables, contact HPE technical support or marketing staff.
- The available transceiver modules and cables vary by HPE devices. For the transceiver modules and cables available for a device, see the installation guide for the device. For the 10-Gigabit transceiver modules and cables for a switch, see "[10-Gigabit Ethernet transceiver modules compatibility matrix](#)".

About optical transceiver modules

Optical transceiver modules (also called fiber transceiver modules) transmit signals over optical fibers and are suitable for long distance transmission.

The following information explains the major specifications of a fiber transceiver module.

Data rate

Data rate is the number of bits transmitted per second. Data rate is typically measured in Gigabits per second (Gbps).

Transmission distance

The transmission distance of optical transceiver modules is divided into short and long-range types. Typically, a distance of 2 km (1.24 miles) or below is short-range type and a distance of 10 km (6.21 miles) is long-range type.

Transmission distances supported by optical transceiver modules are mainly limited by signal attenuation and dispersion suffered during the transmission of fiber signals over fibers.

- Signal attenuation occurs because of absorption, dispersion, and leakage over the media as light travels through optical fibers. This attenuation increases in direct ratio to transmission distance.
- Dispersion occurs because a fiber transmits light with different wavelengths at different speeds. Light with different wavelengths reaches the receiving end at different time. This results in spread and blurred pulses.

Central wavelength

Central wavelength represents the wave band used for optical signal transmission. The following central wavelengths (wave bands) are available for common optical transceiver modules: 850 nm, 1310 nm, and 1550 nm.

- The 850 nm wave band is used for short-reach transmission.
- The 1310 nm and 1550 nm wave bands are used for middle-reach and long-haul transmissions.

Fiber

Fiber types

Fibers are classified into multimode fibers and single-mode fibers.

- Multimode fibers

Multimode fibers (MMFs) have thicker fiber cores than single-mode fibers and can transport light in multiple modes. However, the intermodal dispersion is greater and worsens as the transmission distance increases.

Multimode fibers can be classified into multiple grades according to their diameters and modal bandwidth, as shown in [Table 1](#). The modal bandwidth is a comprehensive index that reflects the optical characteristics of a multimode fiber. The modal bandwidth of a multimode fiber is equal to *the modulation frequency of the maximum modulation frequency pulse that can pass a fiber × the fiber length*.

International Telecommunication Union (ITU) defines multimode fiber types in its G series standards. The most commonly used multimode fiber is defined in the ITU G.651 standard. The G.651-compliant fiber transmits light in the wavelength range of 800 nm to 900 nm or 1200 nm to 1350 nm.

Table 1 Multimode fiber grades

Fiber grade	Fiber diameter (μm)	Modal bandwidth at 850 nm (MHz*km)
OM1	62.5/125	200
OM2	50/125	500
OM3	50/125	2000
OM4	50/125	4700

Other factors that determine the transmission distance of multimode fibers include interface type, central wavelength, and fiber grade, as shown in [Table 2](#).

Table 2 Multimode fiber specifications

Interface type	Central wavelength (nm)	Fiber grade	Transmission distance
1000BASE-SX	850	OM1	< 275 m (902.23 ft)
		OM2	< 550 m (1804.46 ft)

Interface type	Central wavelength (nm)	Fiber grade	Transmission distance
10GBASE-SR	850	OM1	< 33 m (108.27 ft)
		OM2	< 82 m (269.03 ft)
		OM3	< 300 m (984.25 ft)
		OM4	< 450m (1476.38 ft)
10GBASE-LRM	1310	OM1	< 220 m (721.78 ft)
		OM2	< 220 m (721.78 ft)
		OM3	< 220 m (721.78 ft)
		OM4	< 220 m (721.78 ft)

- Single-mode fibers

Single-mode fibers (SMFs) have a small core size (typically 9 μm or 10 μm) and can transmit light in only one mode. Single-mode fibers suffer little intermodal dispersion and are suitable for long-haul communication. Single-mode fibers transmit light at the central wavelength of 1310 nm or 1550 nm.

Telecommunication Industries Alliance (TIA)/Electronic Industries Alliance (EIA) defines that single-mode fibers use yellow outer jackets with an "SM" mark.

ITU defines single-mode fiber types in its G series standards. The most commonly used single-mode fibers are defined in ITU G.652 and G.655 standards. Table 3 describes features of the G.652 and G.655-compliant fibers.

Table 3 Features of G.652 and G.655-compliant fibers

Single-mode fiber type	Wavelength (nm)	Features	Applications
G.652-compliant fiber (standard single-mode fiber)	<ul style="list-style-type: none"> • 1260 to 1360 • 1530 to 1565 	Zero dispersion at 1310 nm.	Connecting transceiver modules with a central wavelength of 1310 nm or 1550 nm.
G.655-compliant fiber (non-zero dispersion shifted fiber)	1530 to 1565	Near-zero dispersion around 1550 nm.	1550-nm wavelength-division multiplexing (WDM) transmissions.

Fiber diameter

Fiber diameter is expressed as core diameter/cladding diameter, in μm. For example, 9/125 μm represents a fiber core diameter of 9 μm and a fiber cladding diameter of 125 μm.

As a best practice, use the following fiber diameters for the HPE Comware-based devices:

- **G.652 standard single-mode fiber**—9/125 μm.
- **G.655 single-mode fiber**—9/125 μm.
- **G.651 standard multimode fiber**—50/125 μm or 62.5/125 μm.

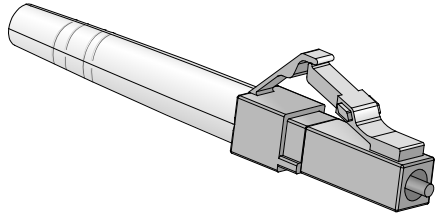
LC connector

△ CAUTION:

Cover the connector with a dust cap when it is not connected to optical fibers.

Connectors connect transceiver modules to the transmission media.

Figure 1 LC connector



Optical parameters

The following are the major optical parameters:

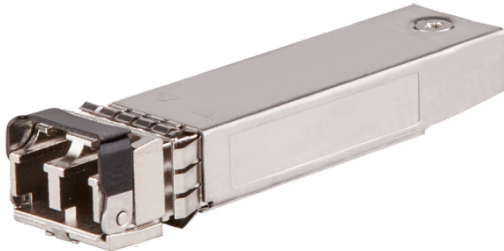
- **Transmit power**—Transmit power is the power at which the transmitter of an optical transceiver module transmits optical signals, in dBm.
- **Receive power**—Receive power is the power at which the receiver of an optical transceiver module receives optical signals, in dBm.

The transceiver module specifications in this guide provide the average transmit and receive power ranges.

SFP+ transceiver modules

SFP+ optical transceiver modules

Figure 2 SFP+ optical transceiver module



Models and specifications

SFP+ optical transceiver modules provide a transmission rate of 10.31 Gbps and use LC connectors.

Table 4 Specifications for SFP+ optical transceiver modules (1)

Product code	HPE description	Central wavelength (nm)	Fiber mode	Fiber diameter (μm)	Modal bandwidth (MHz*km)	Transmission distance
JD092B	HPE X130 10G SFP+ LC SR Transceiver	850	MMF	50/125	2000	300 m (984.25 ft)
					500	82 m (269.03 ft)
				62.5/125	400	66 m (216.54 ft)
					200	33 m (108.27 ft)
JQ431A	HPE X130 10G SFP+ LC SR Data Center Advanced Transceiver	850	MMF	50/125	160	26 m (85.30 ft)
					200	33 m (108.27 ft)
				62.5/125	500	82 m (269.03 ft)
					400	66 m (216.54 ft)
JD093B	HPE X130 10G SFP+ LC LRM Transceiver	1310	MMF	50/125	2000	300 m (984.25 ft)
					500	82 m (269.03 ft)
				62.5/125	400	100 m (328.08 ft)
					200	220 m (721.78 ft)
JQ432A	HPE X130 10G	1310	SMF	9/125	N/A	10 km (6.21 miles)
					N/A	10 km (6.21 miles)

Product code	HPE description	Central wavelength (nm)	Fiber mode	Fiber diameter (μm)	Modal bandwidth (MHz*km)	Transmission distance
	SFP+ LC LR Data Center Advanced Transceiver					
JG234A	HPE X130 10G SFP+ LC ER 40km Transceiver	1550	SMF	9/125	N/A	40 km (24.86 miles)
JG915A	HPE X130 10G SFP+ LC LH 80km Transceiver	1550	SMF	9/125	N/A	80 km (49.71 miles)
JG879A	HPE X190 8G/4G/2G SFP+ LC Short Wave Transceiver	850	MMF	62.5/125	200	150m (492.13 ft)
				50/125	500	380m (1246.72 ft)
					2000	500m (1640.42 ft)
JG880A	HPE X190 8G/4G/2G SFP+ LC Long Wave Transceiver	1310	SMF	9/125	N/A	10km (6.21 miles)
JG990A	HPE X180 10G SFP+ LC LH 80km 1538.19nm DWDM Transceiver	1538.19	SMF	9/125	N/A	80 km (49.71 miles)
JG991A	HPE X180 10G SFP+ LC LH 80km 1537.40nm DWDM Transceiver	1537.40	SMF	9/125	N/A	80 km (49.71 miles)
JG992A	HPE X180 10G SFP+ LC LH 80km 1539.77nm DWDM Transceiver	1539.77	SMF	9/125	N/A	80 km (49.71 miles)
JL250A	HPE X130 10G SFP+ LC LH80 tunable Transceiver	1547.75	SMF	9/125	N/A	80 km (49.71 miles)
JL737A	HPE X130 10G SFP+ LC BiDi 10km-Uplink Transceiver	Transmitting end (TX): 1270 Receiving end (RX): 1330	SMF	9/125	N/A	10 km (6.21 miles)
JL738A	HPE X130 10G SFP+ LC BiDi 10km-Downlink	Transmitting end (TX): 1330	SMF	9/125	N/A	10 km (6.21 miles)

Product code	HPE description	Central wavelength (nm)	Fiber mode	Fiber diameter (μm)	Modal bandwidth (MHz*km)	Transmission distance
	Transceiver	Receiving end (RX): 1270				
JL739A	HPE X130 10G SFP+ LC BiDi 40km-Uplink Transceiver	Transmitting end (TX): 1270 Receiving end (RX): 1330	SMF	9/125	N/A	40 km (24.84 miles)
JL740A	HPE X130 10G SFP+ LC BiDi 40km-Downlink Transceiver	Transmitting end (TX): 1330 Receiving end (RX): 1270	SMF	9/125	N/A	40 km (24.84 miles)

Table 5 Specifications for SFP+ optical transceiver modules (2)

Product code	HPE description	Optical parameters (dBm)	
		Transmit power	Receive power
JD092B	HPE X130 10G SFP+ LC SR Transceiver	-7.3 to -1	-9.9 to +0.5
JQ431A	HPE X130 10G SFP+ LC SR Data Center Advanced Transceiver	-7.3 to -1	-9.9 to +0.5
JD093B	HPE X130 10G SFP+ LC LRM Transceiver	-6.5 to +0.5	-6.5 to +1.5
JD094B	HPE X130 10G SFP+ LC LR Transceiver	-8.2 to +0.5	-14.4 to +0.5
JQ432A	HPE X130 10G SFP+ LC LR Data Center Advanced Transceiver	-8.2 to +0.5	-14.4 to +0.5
JG234A	HPE X130 10G SFP+ LC ER 40km Transceiver	-4.7 to +4	-15.8 to -1
JG915A	HPE X130 10G SFP+ LC LH 80km Transceiver	0 to +4	-24 to -7
JG879A	HPE X190 8G/4G/2G SFP+ LC Short Wave Transceiver	-10 to 0 (2.125Gbps)	-13.1 to 0 (2.125Gbps)
		-9 to 0 (4.25Gbps)	-12.1 to 0 (4.25Gbps)
		-8.2 to 0 (8.5Gbps)	-11.2 to 0 (8.5Gbps)
JG880A	HPE X190 8G/4G/2G SFP+ LC Long Wave Transceiver	-9.5 to -3 (2.125Gbps)	-18.2 to -3 (2.125Gbps)
		-8.4 to -1 (4.25Gbps)	-15.4 to -1 (4.25Gbps)
		-8.4 to +0.5 (8.5Gbps)	-13.8 to +0.5 (8.5Gbps)
JG990A	HPE X180 10G SFP+ LC LH 80km 1538.19nm DWDM Transceiver	0 to +4	-23 to -1
JG991A	HPE X180 10G SFP+ LC LH 80km 1537.40nm DWDM Transceiver	0 to +4	-23 to -1
JG992A	HPE X180 10G SFP+ LC LH 80km 1539.77nm DWDM Transceiver	0 to +4	-23 to -1
JL250A	HPE X130 10G SFP+ LC LH80 tunable	-1 to +3	-24 to -7

Product code	HPE description	Optical parameters (dBm)	
		Transmit power	Receive power
	Transceiver		
JL737A	HPE X130 10G SFP+ LC BiDi 10km-Uplink Transceiver	-6 to -1	-14.4 to 0.5
JL738A	HPE X130 10G SFP+ LC BiDi 10km-Downlink Transceiver	-6 to -1	-14.4 to 0.5
JL739A	HPE X130 10G SFP+ LC BiDi 40km-Uplink Transceiver	0 to 5	-15 to 0.5
JL740A	HPE X130 10G SFP+ LC BiDi 40km-Downlink Transceiver	0 to 5	-15 to 0.5

NOTE:

- A mode conditioning patch cord is required when you use OM1 or OM2 fiber types on an HPE X130 10G SFP+ LC LRM Transceiver (JD093B). Never use mode conditioning patch cords for OM3 fiber types. For more information about mode conditioning patch cords, see related parts in the IEEE 802.3 standard.
- An HPE X130 10G SFP+ LC LH80 tunable Transceiver (JL250A) supports tunable wavelengths. Therefore, cold boot for the module takes longer than cold boot for common SFP+ transceiver modules. Cold boot time within 90 seconds is acceptable for the module.

SFP+ copper cables

Figure 3 SFP+ copper cable



Models and specifications

Table 6 Specifications for SFP+ copper cables

Product code	HPE description	Cable length	Data rate
JD095C	HPE X240 10G SFP+ SFP+ 0.65m Direct Attach Copper Cable	0.65 m (2.13 ft)	10.31 Gbps
JD096B	HPE X240 10G SFP+ SFP+ 1.2m Direct Attach Copper Cable	1.2 m (3.94 ft)	
JD096C	HPE X240 10G SFP+ SFP+ 1.2m Direct Attach Copper Cable	1.2 m (3.94 ft)	
JD097B	HPE X240 10G SFP+ SFP+ 3m Direct Attach Copper Cable	3 m (9.84 ft)	
JD097C	HPE X240 10G SFP+ SFP+ 3m Direct Attach Copper Cable	3 m (9.84 ft)	
JG081C	HPE X240 10G SFP+ SFP+ 5m Direct Attach Copper Cable	5 m (16.40 ft)	
JC784C	HPE X240 10G SFP+ SFP+ 7m Direct Attach Copper Cable	7 m (22.97 ft)	

SFP+ active optical cables

Figure 4 SFP+ active optical cable



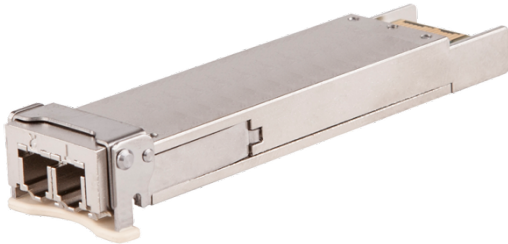
Models and specifications

Table 7 Specifications for SFP+ active optical cables

Product code	HPE description	Cable length	Data rate
JL290A	HPE X2A0 10G SFP+ to SFP+ 7m Active Optical Cable	7 m (22.97 ft)	10.31 Gbps
JL291A	HPE X2A0 10G SFP+ to SFP+ 10m Active Optical Cable	10 m (32.81 ft)	
JL292A	HPE X2A0 10G SFP+ to SFP+ 20m Active Optical Cable	20 m (65.62 ft)	

XFP transceiver modules

Figure 5 XFP transceiver module



Models and specifications

10-Gigabit XFP optical transceiver modules use LC connectors.

Table 8 Specifications for XFP transceiver modules (1)

Product code	HPE description	Central wave-length (nm)	Data rate (Gbps)	Fiber mode	Fiber diameter (μm)	Modal band-width (MHz*km)	Transmission distance
JD117B	HPE X130 10G XFP LC SR Transceiver	850	10.31	MMF	50/125	2000	300 m (984.25 ft)
						500	82 m (269.03 ft)
						400	66 m (216.54 ft)
					62.5/125	200	33 m (108.27 ft)
						160	26 m (85.30 ft)
JD108B	HPE X130 10G XFP LC LR 1310nm Transceiver	1310	10.31	SMF	9/125	N/A	10 km (6.21 miles)
JD088A	HPE X135 10G XFP LC LR Transceiver	1310	9.95 to 11.3	SMF	9/125	N/A	10 km (6.21 miles)
JD121A	HPE X135 10G XFP LC ER Transceiver	1550	9.95 to 10.7	SMF	9/125	N/A	40 km (24.86 miles)
JD107A (end of sal)	HPE X130 10G XFP LC ZR 1550nm Transceiver	1550	9.95 to 10.31	SMF	9/125	N/A	80 km (49.71 miles)
JG226A	HPE X180 10G XFP LC LH 80km 1538.98nm	1538.98	9.95 to 10.31	SMF	9/125	N/A	80 km (49.71 miles)

Product code	HPE description	Central wave-length (nm)	Data rate (Gbps)	Fiber mode	Fiber diameter (µm)	Modal bandwidth (MHz*km)	Transmission distance
	DWDM Transceiver						
JG227A	HPE X180 10G XFP LC LH 80km 1539.77nm DWDM Transceiver	1539.77	9.95 to 10.31	SMF	9/125	N/A	80 km (49.71 miles)
JG228A	HPE X180 10G XFP LC LH 80km 1540.56nm DWDM Transceiver	1540.56	9.95 to 10.31	SMF	9/125	N/A	80 km (49.71 miles)
JG229A	HPE X180 10G XFP LC LH 80km 1542.14nm DWDM Transceiver	1542.14	9.95 to 10.31	SMF	9/125	N/A	80 km (49.71 miles)
JG230A	HPE X180 10G XFP LC LH 80km 1542.94nm DWDM Transceiver	1542.94	9.95 to 10.31	SMF	9/125	N/A	80 km (49.71 miles)
JG231A	HPE X180 10G XFP LC LH 80km 1558.98nm DWDM Transceiver	1558.98	9.95 to 10.31	SMF	9/125	N/A	80 km (49.71 miles)
JG232A	HPE X180 10G XFP LC LH 80km 1559.79nm DWDM Transceiver	1559.79	9.95 to 10.31	SMF	9/125	N/A	80 km (49.71 miles)
JG233A	HPE X180 10G XFP LC LH 80km 1560.61nm DWDM Transceiver	1560.61	9.95 to 10.31	SMF	9/125	N/A	80 km (49.71 miles)

Table 9 Specifications for XFP transceiver modules (2)

Product code	HPE description	Optical parameters (dBm)	
		Transmit power	Receive power
JD117B	HPE X130 10G XFP LC SR Transceiver	-7.3 to -1.08	-9.9 to -1
JD108B	HPE X130 10G XFP LC LR 1310nm	-8.2 to +0.5	-14.4 to +0.5

Product code	HPE description	Optical parameters (dBm)	
		Transmit power	Receive power
	Transceiver		
JD088A	HPE X135 10G XFP LC LR Transceiver	-6 to -1	-10.3 to +0.5
JD121A	HPE X135 10G XFP LC ER Transceiver	-1 to +2	-14.1 to -1
JD107A	HPE X130 10G XFP LC ZR 1550nm Transceiver	0 to +4	-24 to -7
JG226A	HPE X180 10G XFP LC LH 80km 1538.98nm DWDM Transceiver	-1 to +3	-24 to -7
JG227A	HPE X180 10G XFP LC LH 80km 1539.77nm DWDM Transceiver	-1 to +3	-24 to -7
JG228A	HPE X180 10G XFP LC LH 80km 1540.56nm DWDM Transceiver	-1 to +3	-24 to -7
JG229A	HPE X180 10G XFP LC LH 80km 1542.14nm DWDM Transceiver	-1 to +3	-24 to -7
JG230A	HPE X180 10G XFP LC LH 80km 1542.94nm DWDM Transceiver	-1 to +3	-24 to -7
JG231A	HPE X180 10G XFP LC LH 80km 1558.98nm DWDM Transceiver	-1 to +3	-24 to -7
JG232A	HPE X180 10G XFP LC LH 80km 1559.79nm DWDM Transceiver	-1 to +3	-24 to -7
JG233A	HPE X180 10G XFP LC LH 80km 1560.61nm DWDM Transceiver	-1 to +3	-24 to -7

NOTE:

The 9/125 μ m single-mode fibers used by transceiver modules JG226A through JG233A should conform to ITU-T G.655, and those used by other transceiver modules should conform to ITU-T G.652.

CX4 copper cables

Figure 6 CX4 copper cable



Models and specifications

Table 10 Specifications for CX4 copper cables

Product code	HPE description	Cable length	Data rate	Description
JD363B	HPE X230 Local Connect 50cm CX4 Cable	0.5 m (1.64 ft)	12 Gbps	Used for interconnecting devices, and supports IRF
JD364B	HPE X230 Local Connect 100cm CX4 Cable	1 m (3.28 ft)		
JD365A	HPE X230 CX4 to CX4 3m Cable	3 m (9.84 ft)		

10-Gigabit Ethernet transceiver modules compatibility matrix

10-Gigabit Ethernet transceiver modules

Before you install, configure, or upgrade a device with HPE 10-Gigabit Ethernet transceiver modules, always see the device's release notes for latest information. This compatibility matrix does not replace or supersede the release notes.

Table 11 10 Gigabit Ethernet transceiver modules

Product code	Transceiver module	Description
SFP+		
JD092B	HPE X130 10G SFP+ LC SR Transceiver	LSPM1SFPP,SFP+ Module(850nm,300m,LC)
JD093B	HPE X130 10G SFP+ LC LRM Transceiver	LSPM3SFPP,SFP+ Module(1310nm,220m,LC)
JD094B	HPE X130 10G SFP+ LC LR Transceiver	LSPM2SFPP,SFP+ Module(1310nm,10km,LC)
JG234A	HPE X130 10G SFP+ LC ER 40km Transceiver	LSTM2SFP,SFP+ Module,(1550nm,40km,LC)
JG915A	HPE X130 10G SFP+ LC LH 80km Transceiver	LSTM3SFPPA,10G SFP+ Optical Transceiver Module,(1550nm,80km,LC)
JD097B	HPE X240 10G SFP+ SFP+ 3m Direct Attach Copper Cable	LSPM1STK,SFP+ Cable,3m
JD097C	HPE X240 10G SFP+ SFP+ 3m Direct Attach Copper Cable	LSPM1STKD,SFP+ Cable,3m
JG081C	HPE X240 SFP+ SFP+ 5m Direct Attach Copper Cable	LSRM1STKD,SFP+ Cable,5m
JD095B	HPE X240 10G SFP+ SFP+ 0.65m Direct Attach Copper Cable	LSPM2STK,SFP+ Cable,0.65m
JD095C	HPE X240 10G SFP+ SFP+ 0.65m Direct Attach Copper Cable	LSPM2STKD,SFP+ Cable,0.65m
JD096B	HPE X240 10G SFP+ SFP+ 1.2m Direct Attach Copper Cable	LSPM3STK,SFP+ Cable,1.2m
JD096C	HPE X240 10G SFP+ SFP+ 1.2m Direct Attach Copper Cable	LSPM3STKD,SFP+ Cable,1.2m
JC784C	HPE X240 10G SFP+ SFP+ 7m Direct Attach Copper Cable	LSTM5STK7D,SFP+Cable,7m
JL290A	HPE X2A0 10G SFP+ to SFP+ 7m Active Optical Cable	LSWM2SFPPPL,10G SFP+ to SFP+ Active Optical Cable,7m
JL291A	HPE X2A0 10G SFP+ to SFP+ 10m Active Optical Cable	LSWM2SFPPM,10G SFP+ to SFP+ Active Optical Cable,10m
JL292A	HPE X2A0 10G SFP+ to SFP+ 20m Active Optical Cable	LSWM2SFPPN,10G SFP+ to SFP+ Active Optical Cable,20m

Product code	Transceiver module	Description
JL250A	HPE X130 10G SFP+ LC LH80 tunable Transceiver	LSXM1SFPP,10G SFP+ Optical Transceiver Module,(Tunable,80km,LC)
JG879A	HPE X190 8G/4G/2G SFP+ LC Short Wave Transceiver	LSWM1SFPPF,SFP+ 8G/4G/2G Transceiver,(850nm,150m,LC)
JG880A	HPE X190 8G/4G/2G SFP+ LC Long Wave Transceiver	LSWM1SFPPG,SFP+ 8G/4G/2G Transceiver,(1310nm,10km,LC)

Switching minimum software release requirements

HPE FlexFabric 12900 switch series minimum software version requirements

Switch or module	Transceiver module (Product code)	Minimum software release	
		DDM support	Release version
HPE FlexFabric 12900 48-port 10GbE SFP+ EA Module (JG624A)	HPE X130 10G SFP+ LC SR Xcvr (JD092B)	YES	R1005P07
	HPE X130 10G SFP+ LC LR Xcvr (JD094B)	YES	R1005P07
	HPE X130 10G SFP+ LC ER 40km Xcvr (JG234A)	YES	R1005P07
	HPE X130 10G SFP+ LC LH 80km Xcvr (JG915A)	YES	R1005P07
	HPE X240 10G SFP+ SFP+ 3m Direct Attach Copper Cable (JD097B)	NO	R1005P07
	HPE X240 10G SFP+ SFP+ 3m Direct Attach Copper Cable (JD097C)	NO	R1005P07
	HPE X240 SFP+ SFP+ 5m Direct Attach Copper Cable (JG081C)	NO	R1005P07
	HPE X240 10G SFP+ SFP+ 0.65m Direct Attach Copper Cable (JD095B)	NO	R1005P07
	HPE X240 10G SFP+ SFP+ 0.65m Direct Attach Copper Cable (JD095C)	NO	R1005P07
	HPE X240 10G SFP+ SFP+ 1.2m Direct Attach Copper Cable (JD096B)	NO	R1005P07
	HPE X240 10G SFP+ SFP+ 1.2m Direct Attach Copper Cable (JD096C)	NO	R1005P07
	HPE X2A0 10G SFP+ to SFP+ 7m Active Optical Cable (JL290A)	YES	F1033L05
	HPE X2A0 10G SFP+ to SFP+ 10m Active Optical Cable (JL291A)	YES	F1033L05
	HPE X2A0 10G SFP+ to SFP+ 20m Active Optical Cable (JL292A)	YES	F1033L05
HPE FlexFabric	HPE X130 10G SFP+ LC SR Xcvr (JD092B)	YES	R1005P07

Switch or module	Transceiver module (Product code)	Minimum software release	
		DDM support	Release version
12900 48-port 1/10GbE SFP+ EC Module (JG626A)	HPE X130 10G SFP+ LC LR Xcvr (JD094B)	YES	R1005P07
	HPE X130 10G SFP+ LC ER 40km Xcvr (JG234A)	YES	R1005P07
	HPE X130 10G SFP+ LC LH 80km Xcvr (JG915A)	YES	R1005P10
	HPE X240 10G SFP+ SFP+ 3m Direct Attach Copper Cable (JD097B)	NO	R1005P07
	HPE X240 10G SFP+ SFP+ 3m Direct Attach Copper Cable (JD097C)	NO	R1005P07
	HPE X240 SFP+ SFP+ 5m Direct Attach Copper Cable (JG081C)	NO	R1005P10
	HPE X240 10G SFP+ SFP+ 0.65m Direct Attach Copper Cable (JD095B)	NO	R1005P07
	HPE X240 10G SFP+ SFP+ 0.65m Direct Attach Copper Cable (JD095C)	NO	R1005P07
	HPE X240 10G SFP+ SFP+ 1.2m Direct Attach Copper Cable (JD096B)	NO	R1005P07
	HPE X240 10G SFP+ SFP+ 1.2m Direct Attach Copper Cable (JD096C)	NO	R1005P07
	HPE X2A0 10G SFP+ to SFP+ 7m Active Optical Cable (JL290A)	YES	F1033L05
	HPE X2A0 10G SFP+ to SFP+ 10m Active Optical Cable (JL291A)	YES	F1033L05
	HPE X2A0 10G SFP+ to SFP+ 20m Active Optical Cable (JL292A)	YES	F1033L05
	HPE FlexFabric 12900 48-port GbE SFP EB Module (JG855A)	HPE X130 10G SFP+ LC SR Xcvr (JD092B)	YES
HPE X130 10G SFP+ LC LRM Xcvr (JD093B)		YES	R1005P07
HPE X130 10G SFP+ LC LR Xcvr (JD094B)		YES	R1005P07
HPE X130 10G SFP+ LC ER 40km Xcvr (JG234A)		YES	R1005P07
HPE X130 10G SFP+ LC LH 80km Xcvr (JG915A)		YES	R1005P07
HPE X240 10G SFP+ SFP+ 3m Direct Attach Copper Cable (JD097B)		NO	R1005P07
HPE X240 10G SFP+ SFP+ 3m Direct Attach Copper Cable (JD097C)		NO	R1005P07
HPE X240 SFP+ SFP+ 5m Direct Attach Copper Cable (JG081C)		NO	R1005P07
HPE X240 10G SFP+ SFP+ 0.65m Direct Attach Copper Cable (JD095B)		NO	R1005P07
HPE X240 10G SFP+ SFP+ 0.65m Direct Attach Copper Cable (JD095C)		NO	R1005P07
HPE X240 10G SFP+ SFP+ 1.2m Direct Attach Copper Cable (JD096B)		NO	R1005P07
HPE X240 10G SFP+ SFP+ 1.2m Direct Attach Copper Cable (JD096C)	NO	R1005P07	

Switch or module	Transceiver module (Product code)	Minimum software release	
		DDM support	Release version
	Cable (JD096C)		
	HPE X240 10G SFP+ SFP+ 7m Direct Attach Copper Cable (JC784C)	NO	R1005P07
HPE FlexFabric 12900 48-port 1/10GbE SFP+ FX Module (JG888B)	HPE X130 10G SFP+ LC SR Xcvr (JD092B)	YES	R1109
	HPE X130 10G SFP+ LC LR Xcvr (JD094B)	YES	R1109
	HPE X130 10G SFP+ LC ER 40km Xcvr (JG234A)	YES	R1109
	HPE X130 10G SFP+ LC LH 80km Xcvr (JG915A)	YES	R1109
	HPE X240 10G SFP+ SFP+ 3m Direct Attach Copper Cable (JD097B)	NO	R1109
	HPE X240 10G SFP+ SFP+ 3m Direct Attach Copper Cable (JD097C)	NO	R1109
	HPE X240 SFP+ SFP+ 5m Direct Attach Copper Cable (JG081C)	NO	R1109
	HPE X240 10G SFP+ SFP+ 0.65m Direct Attach Copper Cable (JD095B)	NO	R1109
	HPE X240 10G SFP+ SFP+ 0.65m Direct Attach Copper Cable (JD095C)	NO	R1109
	HPE X240 10G SFP+ SFP+ 1.2m Direct Attach Copper Cable (JD096B)	NO	R1109
	HPE X240 10G SFP+ SFP+ 1.2m Direct Attach Copper Cable (JD096C)	NO	R1109
	HPE X240 10G SFP+ SFP+ 7m Direct Attach Copper Cable (JC784C)	NO	R1109
	HPE X2A0 10G SFP+ to SFP+ 7m Active Optical Cable (JL290A)	YES	R2138
	HPE X2A0 10G SFP+ to SFP+ 10m Active Optical Cable (JL291A)	YES	R2138
	HPE X2A0 10G SFP+ to SFP+ 20m Active Optical Cable (JL292A)	YES	R2138
HP FlexFabric 12900 48-port 1/10GbE SFP+ FC Module (JG888A)	HPE X130 10G SFP+ LC SR Xcvr (JD092B)	YES	R1109
	HPE X130 10G SFP+ LC LR Xcvr (JD094B)	YES	R1109
	HPE X130 10G SFP+ LC ER 40km Xcvr (JG234A)	YES	R1109
	HPE X130 10G SFP+ LC LH 80km Xcvr (JG915A)	YES	R1109
	HPE X240 10G SFP+ SFP+ 3m Direct Attach Copper Cable (JD097B)	NO	R1109
	HPE X240 10G SFP+ SFP+ 3m Direct Attach Copper Cable (JD097C)	NO	R1109
	HPE X240 SFP+ SFP+ 5m Direct Attach Copper Cable (JG081C)	NO	R1109
	HPE X240 10G SFP+ SFP+ 0.65m Direct Attach Copper Cable (JD095B)	NO	R1109

Switch or module	Transceiver module (Product code)	Minimum software release	
		DDM support	Release version
	HPE X240 10G SFP+ SFP+ 0.65m Direct Attach Copper Cable (JD095C)	NO	R1109
	HPE X240 10G SFP+ SFP+ 1.2m Direct Attach Copper Cable (JD096B)	NO	R1109
	HPE X240 10G SFP+ SFP+ 1.2m Direct Attach Copper Cable (JD096C)	NO	R1109
	HPE X240 10G SFP+ SFP+ 7m Direct Attach Copper Cable (JC784C)	NO	R1109
	HPE X2A0 10G SFP+ to SFP+ 7m Active Optical Cable (JL290A)	YES	R2138
	HPE X2A0 10G SFP+ to SFP+ 10m Active Optical Cable (JL291A)	YES	R2138
	HPE X2A0 10G SFP+ to SFP+ 20m Active Optical Cable (JL292A)	YES	R2138
	HPE FlexFabric 12900 48-port 1/10GbE SFP+ FE Module (JH249A)	HPE X130 10G SFP+ LC SR Xcvr (JD092B)	YES
HPE X130 10G SFP+ LC LR Xcvr (JD094B)		YES	R1135
HPE X130 10G SFP+ LC ER 40km Xcvr (JG234A)		YES	R1135
HPE X130 10G SFP+ LC LH 80km Xcvr (JG915A)		YES	R1135
HPE X240 10G SFP+ SFP+ 3m Direct Attach Copper Cable (JD097B)		NO	R1135
HPE X240 10G SFP+ SFP+ 3m Direct Attach Copper Cable (JD097C)		NO	R1135
HPE X240 SFP+ SFP+ 5m Direct Attach Copper Cable (JG081C)		NO	R1135
HPE X240 10G SFP+ SFP+ 0.65m Direct Attach Copper Cable (JD095B)		NO	R1135
HPE X240 10G SFP+ SFP+ 0.65m Direct Attach Copper Cable (JD095C)		NO	R1135
HPE X2A0 10G SFP+ to SFP+ 7m Active Optical Cable (JL290A)		YES	R2138
HPE X2A0 10G SFP+ to SFP+ 10m Active Optical Cable (JL291A)		YES	R2138
HPE X2A0 10G SFP+ to SFP+ 20m Active Optical Cable (JL292A)		YES	R2138
HPE 10GBase-T SFP+ Transceiver (813874-B21)		NO	R2710

NOTE:

For the HPE FlexFabric 12900 48-port 1/10GbE SFP+ FE Module (JH249A), when using the HPE 10GBase-T SFP+ Transceiver (813874-B21) only add ports are supported and link-up only happens at auto-negotiation mode.

HPE FlexFabric 12900E switch series minimum software version requirements

Switch or module	Transceiver module (Product code)	Minimum software release	
		DDM support	Release version
HPE FlexFabric 12900E 48-port 1/10GbE SFP+ 2-port 100GbE QSFP28 HB Module (JH360A)	HPE X130 10G SFP+ LC SR Xcvr (JD092B)	YES	R2606
	HPE X130 10G SFP+ LC LR Xcvr (JD094B)	YES	R2606
	HPE X130 10G SFP+ LC ER 40km Xcvr (JG234A)	YES	R2606
	HPE X130 10G SFP+ LC LH 80km Xcvr (JG915A)	YES	R2606
	HPE X130 10G SFP+ LC LH80 tunable Xcvr (JL250A)	YES	R2609
	HPE X240 10G SFP+ SFP+ 3m Direct Attach Copper Cable (JD097B)	NO	R2606
	HPE X240 10G SFP+ SFP+ 3m Direct Attach Copper Cable (JD097C)	NO	R2606
	HPE X240 SFP+ SFP+ 5m Direct Attach Copper Cable (JG081C)	NO	R2606
	HPE X240 10G SFP+ SFP+ 0.65m Direct Attach Copper Cable (JD095B)	NO	R2606
	HPE X240 10G SFP+ SFP+ 0.65m Direct Attach Copper Cable (JD095C)	NO	R2606
	HPE X240 10G SFP+ SFP+ 1.2m Direct Attach Copper Cable (JD096B)	NO	R2606
	HPE X240 10G SFP+ SFP+ 1.2m Direct Attach Copper Cable (JD096C)	NO	R2606
	HPE X240 10G SFP+ SFP+ 7m Direct Attach Copper Cable (JC784C)	NO	R2606
	HPE X2A0 10G SFP+ to SFP+ 7m Active Optical Cable (JL290A)	YES	R2606
	HPE X2A0 10G SFP+ to SFP+ 10m Active Optical Cable (JL291A)	YES	R2606
	HPE X2A0 10G SFP+ to SFP+ 20m Active Optical Cable (JL292A)	YES	R2606
	HPE 10GBase-T SFP+ Transceiver (813874-B21)	NO	R2609
HPE FlexFabric 12900E 24p 10G/2p 40G HB 59xx Slot Module (JH953A)	HPE X130 10G SFP+ LC SR Xcvr (JD092B)	YES	R2706P01
	HPE X130 10G SFP+ LC LR Xcvr (JD094B)	YES	R2706P01
	HPE X130 10G SFP+ LC ER 40km Xcvr (JG234A)	YES	R2706P01
	HPE X130 10G SFP+ LC LH 80km Xcvr (JG915A)	YES	R2706P01
	HPE X130 10G SFP+ LC LH80 tunable Xcvr (JL250A)	YES	R2706P01
	HPE X240 10G SFP+ SFP+ 3m Direct Attach Copper Cable (JD097B)	NO	R2706P01
	HPE X240 10G SFP+ SFP+ 3m Direct Attach Copper Cable (JD097C)	NO	R2706P01

Switch or module	Transceiver module (Product code)	Minimum software release	
		DDM support	Release version
	HPE X240 SFP+ SFP+ 5m Direct Attach Copper Cable (JG081C)	NO	R2706P01
	HPE X240 10G SFP+ SFP+ 0.65m Direct Attach Copper Cable (JD095B)	NO	R2706P01
	HPE X240 10G SFP+ SFP+ 0.65m Direct Attach Copper Cable (JD095C)	NO	R2706P01
	HPE X240 10G SFP+ SFP+ 1.2m Direct Attach Copper Cable (JD096B)	NO	R2706P01
	HPE X240 10G SFP+ SFP+ 1.2m Direct Attach Copper Cable (JD096C)	NO	R2706P01
	HPE X240 10G SFP+ SFP+ 7m Direct Attach Copper Cable (JC784C)	NO	R2706P01
	HPE FlexFabric 12900E 24p 10G/4p 100G HD 59xx Slot Module(JH954A)	HPE X130 10G SFP+ LC SR Xcvr (JD092B)	YES
HPE X130 10G SFP+ LC LR Xcvr (JD094B)		YES	R2710
HPE X130 10G SFP+ LC ER 40km Xcvr (JG234A)		YES	R2710
HPE X130 10G SFP+ LC LH 80km Xcvr (JG915A)		YES	R2710
HPE X130 10G SFP+ LC LH80 tunable Xcvr (JL250A)		YES	R2710
HPE X240 10G SFP+ SFP+ 3m Direct Attach Copper Cable (JD097C)		NO	R2710
HPE X240 SFP+ SFP+ 5m Direct Attach Copper Cable (JG081C)		NO	R2710
HPE X240 10G SFP+ SFP+ 0.65m Direct Attach Copper Cable (JD095B)		NO	R2710
HPE X240 10G SFP+ SFP+ 0.65m Direct Attach Copper Cable (JD095C)		NO	R2710
HPE X240 10G SFP+ SFP+ 1.2m Direct Attach Copper Cable (JD096B)		NO	R2710
HPE X240 10G SFP+ SFP+ 1.2m Direct Attach Copper Cable (JD096C)		NO	R2710
HPE X240 10G SFP+ SFP+ 7m Direct Attach Copper Cable (JC784C)		NO	R2710
HPE FlexFabric 12900E 48-port 10GbE SFP+ HF Module (JQ061A)		HPE X130 10G SFP+ LC SR Xcvr (JD092B)	YES
	HPE X130 10G SFP+ LC LR Xcvr (JD094B)	YES	R2706P01
	HPE X130 10G SFP+ LC ER 40km Xcvr (JG234A)	YES	R2706P01
	HPE X130 10G SFP+ LC LH 80km Xcvr (JG915A)	YES	R2706P01
	HPE X240 10G SFP+ SFP+ 3m Direct Attach Copper Cable (JD097C)	NO	R2706P01
	HPE X240 SFP+ SFP+ 5m Direct Attach Copper Cable (JG081C)	NO	R2706P01
	HPE X240 10G SFP+ SFP+ 0.65m Direct Attach Copper Cable (JD095B)	NO	R2706P01

Switch or module	Transceiver module (Product code)	Minimum software release	
		DDM support	Release version
	HPE X240 10G SFP+ SFP+ 0.65m Direct Attach Copper Cable (JD095C)	NO	R2706P01
	HPE X240 10G SFP+ SFP+ 1.2m Direct Attach Copper Cable (JD096B)	NO	R2706P01
	HPE X240 10G SFP+ SFP+ 1.2m Direct Attach Copper Cable (JD096C)	NO	R2706P01
	HPE X240 10G SFP+ SFP+ 7m Direct Attach Copper Cable (JC784C)	NO	R2706P01
	HPE 10GBase-T SFP+ Transceiver (813874-B21)	NO	R2609

NOTE:

For the HPE FlexFabric 12900E 48-port 1/10GbE SFP+ 2-port 100GbE QSFP28 HB Module (JH360A) and HPE FlexFabric 12900E 48-port 10GbE SFP+ HF Module (JQ061A), when using the HPE 10GBase-T SFP+ Transceiver (813874-B21) only add ports are supported and link-up only happens at auto-negotiation mode.

HPE FlexFabric 11900 switch series minimum software version requirements

Switch or module	Transceiver module (Product code)	Minimum software release	
		DDM support	Release version
HP FlexFabric 11900 32-port 10GbE SFP+ SF Module (JG611A)	HPE X130 10G SFP+ LC SR Xcvr (JD092B)	YES	B7143
	HPE X130 10G SFP+ LC LRM Xcvr (JD093B)	YES	B7143
	HPE X130 10G SFP+ LC LR Xcvr (JD094B)	YES	B7148
	HPE X130 10G SFP+ LC ER 40km Xcvr (JG234A)	YES	B7143
	HPE X130 10G SFP+ LC LH 80km Xcvr (JG915A)	YES	B7143
	HPE X130 10G SFP+ LC LH80 tunable Xcvr (JL250A)	YES	R7180
	HPE X240 10G SFP+ SFP+ 3m Direct Attach Copper Cable (JD097B)	NO	B7143
	HPE X240 10G SFP+ SFP+ 3m Direct Attach Copper Cable (JD097C)	NO	B7143
	HPE X240 SFP+ SFP+ 5m Direct Attach Copper Cable (JG081C)	NO	B7143
	HPE X240 10G SFP+ SFP+ 1.2m Direct Attach Copper Cable (JD096B)	NO	B7143
	HPE X240 10G SFP+ SFP+ 1.2m Direct Attach Copper Cable (JD096C)	NO	B7143
	HPE X240 10G SFP+ SFP+ 7m Direct Attach Copper Cable (JC784C)	NO	B7143

Switch or module	Transceiver module (Product code)	Minimum software release	
		DDM support	Release version
HP FlexFabric 11900 48-port 10GbE SFP+ SF Module (JG612A)	HPE X130 10G SFP+ LC SR Xcvr (JD092B)	YES	B7143
	HPE X130 10G SFP+ LC LR Xcvr (JD094B)	YES	B7148
	HPE X130 10G SFP+ LC ER 40km Xcvr (JG234A)	YES	B7143
	HPE X130 10G SFP+ LC LH 80km Xcvr (JG915A)	YES	B7143
	HPE X130 10G SFP+ LC LH80 tunable Xcvr (JL250A)	YES	R7180
	HPE X240 10G SFP+ SFP+ 3m Direct Attach Copper Cable (JD097B)	NO	B7143
	HPE X240 10G SFP+ SFP+ 3m Direct Attach Copper Cable (JD097C)	NO	B7143
	HPE X240 SFP+ SFP+ 5m Direct Attach Copper Cable (JG081C)	NO	B7143
	HPE X240 10G SFP+ SFP+ 1.2m Direct Attach Copper Cable (JD096B)	NO	B7143
	HPE X240 10G SFP+ SFP+ 1.2m Direct Attach Copper Cable (JD096C)	NO	B7143

HPE FlexFabric 10500 switch series minimum software version requirements

Switch or module	Transceiver module (Product code)	Minimum software release	
		DDM support	Release version
HP A10500 16-port 10-GbE SFP+ SC Module (JC628A)	HPE X130 10G SFP+ LC SR Xcvr (JD092B)	YES	B7143
	HPE X130 10G SFP+ LC LRM Xcvr (JD093B)	YES	B7143
	HPE X130 10G SFP+ LC LR Xcvr (JD094B)	YES	B7148
	HPE X130 10G SFP+ LC ER 40km Xcvr (JG234A)	YES	B7143
	HPE X130 10G SFP+ LC LH 80km Xcvr (JG915A)	YES	B7143
	HPE X130 10G SFP+ LC LH80 tunable Xcvr (JL250A)	YES	R7180
	HPE X240 10G SFP+ SFP+ 3m Direct Attach Copper Cable (JD097B)	NO	B7143
	HPE X240 10G SFP+ SFP+ 3m Direct Attach Copper Cable (JD097C)	NO	B7143
	HPE X240 SFP+ SFP+ 5m Direct Attach Copper Cable (JG081C)	NO	B7143
	HPE X240 10G SFP+ SFP+ 1.2m Direct Attach Copper Cable (JD096B)	NO	B7143
	HPE X240 10G SFP+ SFP+ 1.2m Direct Attach Copper Cable (JD096C)	NO	B7143

Switch or module	Transceiver module (Product code)	Minimum software release	
		DDM support	Release version
	HPE X240 10G SFP+ SFP+ 7m Direct Attach Copper Cable (JC784C)	NO	B7143
HP A10500 8-port 10-GbE SFP+ EB Module (JC629A)	HPE X130 10G SFP+ LC SR Xcvr (JD092B)	YES	B7143
	HPE X130 10G SFP+ LC LRM Xcvr (JD093B)	YES	B7143
	HPE X130 10G SFP+ LC LR Xcvr (JD094B)	YES	B7148
	HPE X130 10G SFP+ LC ER 40km Xcvr (JG234A)	YES	B7143
	HPE X130 10G SFP+ LC LH 80km Xcvr (JG915A)	YES	B7143
	HPE X130 10G SFP+ LC LH80 tunable Xcvr (JL250A)	YES	R7180
	HPE X240 10G SFP+ SFP+ 3m Direct Attach Copper Cable (JD097B)	NO	B7143
	HPE X240 10G SFP+ SFP+ 3m Direct Attach Copper Cable (JD097C)	NO	B7143
	HPE X240 SFP+ SFP+ 5m Direct Attach Copper Cable (JG081C)	NO	B7143
	HPE X240 10G SFP+ SFP+ 1.2m Direct Attach Copper Cable (JD096B)	NO	B7143
	HPE X240 10G SFP+ SFP+ 1.2m Direct Attach Copper Cable (JD096C)	NO	B7143
	HPE X240 10G SFP+ SFP+ 7m Direct Attach Copper Cable (JC784C)	NO	B7143
	HP A10500 8-port 10-GbE SFP+ EA Module (JC630A)	HPE X130 10G SFP+ LC SR Xcvr (JD092B)	YES
HPE X130 10G SFP+ LC LRM Xcvr (JD093B)		YES	B7143
HPE X130 10G SFP+ LC LR Xcvr (JD094B)		YES	B7148
HPE X130 10G SFP+ LC ER 40km Xcvr (JG234A)		YES	B7143
HPE X130 10G SFP+ LC LH 80km Xcvr (JG915A)		YES	B7143
HPE X130 10G SFP+ LC LH80 tunable Xcvr (JL250A)		YES	R7180
HPE X240 10G SFP+ SFP+ 3m Direct Attach Copper Cable (JD097B)		NO	B7143
HPE X240 10G SFP+ SFP+ 3m Direct Attach Copper Cable (JD097C)		NO	B7143
HPE X240 SFP+ SFP+ 5m Direct Attach Copper Cable (JG081C)		NO	B7143
HPE X240 10G SFP+ SFP+ 1.2m Direct Attach Copper Cable (JD096B)		NO	B7143
HPE X240 10G SFP+ SFP+ 1.2m Direct Attach Copper Cable (JD096C)		NO	B7143
HPE X240 10G SFP+ SFP+ 7m Direct Attach Copper Cable (JC784C)		NO	B7143
HP A10500 8-port 10-GbE SFP+ SE		HPE X130 10G SFP+ LC SR Xcvr (JD092B)	YES
	HPE X130 10G SFP+ LC LRM Xcvr (JD093B)	YES	B7143

Switch or module	Transceiver module (Product code)	Minimum software release	
		DDM support	Release version
Module (JC631A)	HPE X130 10G SFP+ LC LR Xcvr (JD094B)	YES	B7148
	HPE X130 10G SFP+ LC ER 40km Xcvr (JG234A)	YES	B7143
	HPE X130 10G SFP+ LC LH 80km Xcvr (JG915A)	YES	B7143
	HPE X130 10G SFP+ LC LH80 tunable Xcvr (JL250A)	YES	R7180
	HPE X240 10G SFP+ SFP+ 3m Direct Attach Copper Cable (JD097B)	NO	B7143
	HPE X240 10G SFP+ SFP+ 3m Direct Attach Copper Cable (JD097C)	NO	B7143
	HPE X240 SFP+ SFP+ 5m Direct Attach Copper Cable (JG081C)	NO	B7143
	HPE X240 10G SFP+ SFP+ 1.2m Direct Attach Copper Cable (JD096B)	NO	B7143
	HPE X240 10G SFP+ SFP+ 1.2m Direct Attach Copper Cable (JD096C)	NO	B7143
	HPE X240 10G SFP+ SFP+ 7m Direct Attach Copper Cable (JC784C)	NO	B7143
HPE FlexNetwork 10500 32-port 10GbE SFP+ SF Module (JC755A)	HPE X130 10G SFP+ LC SR Xcvr (JD092B)	YES	B7143
	HPE X130 10G SFP+ LC LRM Xcvr (JD093B)	YES	B7143
	HPE X130 10G SFP+ LC LR Xcvr (JD094B)	YES	B7148
	HPE X130 10G SFP+ LC ER 40km Xcvr (JG234A)	YES	B7143
	HPE X130 10G SFP+ LC LH 80km Xcvr (JG915A)	YES	B7143
	HPE X130 10G SFP+ LC LH80 tunable Xcvr (JL250A)	YES	R7180
	HPE X240 10G SFP+ SFP+ 3m Direct Attach Copper Cable (JD097B)	NO	B7143
	HPE X240 10G SFP+ SFP+ 3m Direct Attach Copper Cable (JD097C)	NO	B7143
	HPE X240 SFP+ SFP+ 5m Direct Attach Copper Cable (JG081C)	NO	B7143
	HPE X240 10G SFP+ SFP+ 1.2m Direct Attach Copper Cable (JD096B)	NO	B7143
	HPE X240 10G SFP+ SFP+ 1.2m Direct Attach Copper Cable (JD096C)	NO	B7143
	HPE X240 10G SFP+ SFP+ 7m Direct Attach Copper Cable (JC784C)	NO	B7143
HPE FlexNetwork 10500 48-port 10GbE SFP+ SF Module (JC756A)	HPE X130 10G SFP+ LC SR Xcvr (JD092B)	YES	B7143
	HPE X130 10G SFP+ LC LR Xcvr (JD094B)	YES	B7148
	HPE X130 10G SFP+ LC ER 40km Xcvr (JG234A)	YES	B7143
	HPE X130 10G SFP+ LC LH 80km Xcvr (JG915A)	YES	B7143
	HPE X130 10G SFP+ LC LH80 tunable Xcvr (JL250A)	YES	R7180

Switch or module	Transceiver module (Product code)	Minimum software release	
		DDM support	Release version
	HPE X240 10G SFP+ SFP+ 3m Direct Attach Copper Cable (JD097B)	NO	B7143
	HPE X240 10G SFP+ SFP+ 3m Direct Attach Copper Cable (JD097C)	NO	B7143
	HPE X240 SFP+ SFP+ 5m Direct Attach Copper Cable (JG081C)	NO	B7143
	HPE X240 10G SFP+ SFP+ 1.2m Direct Attach Copper Cable (JD096B)	NO	B7143
	HPE X240 10G SFP+ SFP+ 1.2m Direct Attach Copper Cable (JD096C)	NO	B7143
	HPE FlexNetwork 10500 24-port 1/10GbE SFP+ EC Module (JH194A)	HPE X130 10G SFP+ LC SR Xcvr (JD092B)	YES
HPE X130 10G SFP+ LC LR Xcvr (JD094B)		YES	B7148
HPE X130 10G SFP+ LC LH 80km Xcvr (JG915A)		YES	B7143
HPE X130 10G SFP+ LC LH80 tunable Xcvr (JL250A)		YES	R7180
HPE 10500 24-Port GbE/10GbE SFP+ EC TAA-compliant Module (JH202A)	HPE X130 10G SFP+ LC SR Xcvr (JD092B)	YES	B7143
	HPE X130 10G SFP+ LC LR Xcvr (JD094B)	YES	B7148
	HPE X130 10G SFP+ LC LH 80km Xcvr (JG915A)	YES	B7143
	HPE X130 10G SFP+ LC LH80 tunable Xcvr (JL250A)	YES	R7180
HPE FlexNetwork 10500 44-port GbE SFP/4-port 10GbE SFP+ SE Module (JH191A)	HPE X130 10G SFP+ LC SR Xcvr (JD092B)	YES	B7143
	HPE X130 10G SFP+ LC LR Xcvr (JD094B)	YES	B7148
	HPE X130 10G SFP+ LC ER 40km Xcvr (JG234A)	YES	B7143
	HPE X130 10G SFP+ LC LH 80km Xcvr (JG915A)	YES	B7143
	HPE X130 10G SFP+ LC LH80 tunable Xcvr (JL250A)	YES	R7180
	HPE X240 10G SFP+ SFP+ 3m Direct Attach Copper Cable (JD097B)	NO	B7143
	HPE X240 10G SFP+ SFP+ 3m Direct Attach Copper Cable (JD097C)	NO	B7143
	HPE X240 10G SFP+ SFP+ 0.65m Direct Attach Copper Cable (JD095C)	NO	B7143
	HPE X240 10G SFP+ SFP+ 1.2m Direct Attach Copper Cable (JD096B)	NO	B7143
	HPE X240 10G SFP+ SFP+ 1.2m Direct Attach Copper Cable (JD096C)	NO	B7143
HPE 10500 44-Port GbE SFP/4-Port 10GbE SFP+ SE TAA-compliant Module (JH199A)	HPE X130 10G SFP+ LC SR Xcvr (JD092B)	YES	B7143
	HPE X130 10G SFP+ LC LR Xcvr (JD094B)	YES	B7148
	HPE X130 10G SFP+ LC ER 40km Xcvr (JG234A)	YES	B7143
	HPE X130 10G SFP+ LC LH 80km Xcvr (JG915A)	YES	B7143
	HPE X130 10G SFP+ LC LH80 tunable Xcvr (JL250A)	YES	R7180
	HPE X240 10G SFP+ SFP+ 3m Direct Attach Copper	NO	B7143

Switch or module	Transceiver module (Product code)	Minimum software release	
		DDM support	Release version
	Cable (JD097B)		
	HPE X240 10G SFP+ SFP+ 3m Direct Attach Copper Cable (JD097C)	NO	B7143
	HPE X240 10G SFP+ SFP+ 0.65m Direct Attach Copper Cable (JD095C)	NO	B7143
	HPE X240 10G SFP+ SFP+ 1.2m Direct Attach Copper Cable (JD096B)	NO	B7143
	HPE X240 10G SFP+ SFP+ 1.2m Direct Attach Copper Cable (JD096C)	NO	B7143
HPE FlexNetwork 10500 16-port 1/10GbE SFP+ SF Module (JH193A)	HPE X130 10G SFP+ LC SR Xcvr (JD092B)	YES	B7143
	HPE X130 10G SFP+ LC LR Xcvr (JD094B)	YES	B7148
	HPE X130 10G SFP+ LC ER 40km Xcvr (JG234A)	YES	B7143
	HPE X130 10G SFP+ LC LH 80km Xcvr (JG915A)	YES	B7143
	HPE X130 10G SFP+ LC LH80 tunable Xcvr (JL250A)	YES	R7180
	HPE X240 10G SFP+ SFP+ 3m Direct Attach Copper Cable (JD097B)	NO	B7143
	HPE X240 10G SFP+ SFP+ 3m Direct Attach Copper Cable (JD097C)	NO	B7143
	HPE X240 SFP+ SFP+ 5m Direct Attach Copper Cable (JG081C)	NO	B7143
	HPE X240 10G SFP+ SFP+ 0.65m Direct Attach Copper Cable (JD095C)	NO	B7143
	HPE X240 10G SFP+ SFP+ 1.2m Direct Attach Copper Cable (JD096B)	NO	B7143
	HPE X240 10G SFP+ SFP+ 1.2m Direct Attach Copper Cable (JD096C)	NO	B7143
HPE X240 10G SFP+ SFP+ 7m Direct Attach Copper Cable (JC784C)	NO	B7143	
HPE 10500 16-Port GbE/10GbE SFP+ SF TAA-compliant Module (JH201A)	HPE X130 10G SFP+ LC SR Xcvr (JD092B)	YES	B7143
	HPE X130 10G SFP+ LC LR Xcvr (JD094B)	YES	B7148
	HPE X130 10G SFP+ LC ER 40km Xcvr (JG234A)	YES	B7143
	HPE X130 10G SFP+ LC LH 80km Xcvr (JG915A)	YES	B7143
	HPE X130 10G SFP+ LC LH80 tunable Xcvr (JL250A)	YES	R7180
	HPE X240 10G SFP+ SFP+ 3m Direct Attach Copper Cable (JD097B)	NO	B7143
	HPE X240 10G SFP+ SFP+ 3m Direct Attach Copper Cable (JD097C)	NO	B7143
	HPE X240 SFP+ SFP+ 5m Direct Attach Copper Cable (JG081C)	NO	B7143
	HPE X240 10G SFP+ SFP+ 0.65m Direct Attach Copper Cable (JD095C)	NO	B7143

Switch or module	Transceiver module (Product code)	Minimum software release	
		DDM support	Release version
	HPE X240 10G SFP+ SFP+ 1.2m Direct Attach Copper Cable (JD096B)	NO	B7143
	HPE X240 10G SFP+ SFP+ 1.2m Direct Attach Copper Cable (JD096C)	NO	B7143
	HPE X240 10G SFP+ SFP+ 7m Direct Attach Copper Cable (JC784C)	NO	B7143
HPE FlexNetwork 10500 48-port 1/10GbE SFP+ SG Module (JH197A)	HPE X130 10G SFP+ LC SR Xcvr (JD092B)	YES	B7143
	HPE X130 10G SFP+ LC LR Xcvr (JD094B)	YES	B7148
	HPE X130 10G SFP+ LC ER 40km Xcvr (JG234A)	YES	B7143
	HPE X130 10G SFP+ LC LH 80km Xcvr (JG915A)	YES	B7143
	HPE X130 10G SFP+ LC LH80 tunable Xcvr (JL250A)	YES	R7180
	HPE X240 10G SFP+ SFP+ 3m Direct Attach Copper Cable (JD097B)	NO	B7143
	HPE X240 10G SFP+ SFP+ 3m Direct Attach Copper Cable (JD097C)	NO	B7143
	HPE X240 SFP+ SFP+ 5m Direct Attach Copper Cable (JG081C)	NO	B7143
	HPE X240 10G SFP+ SFP+ 0.65m Direct Attach Copper Cable (JD095C)	NO	B7143
	HPE X240 10G SFP+ SFP+ 1.2m Direct Attach Copper Cable (JD096B)	NO	B7143
	HPE X240 10G SFP+ SFP+ 1.2m Direct Attach Copper Cable (JD096C)	NO	B7143
	HPE 10500 48-Port GbE/10GbE SFP+ SG TAA-compliant Module (JH205A)	HPE X130 10G SFP+ LC SR Xcvr (JD092B)	YES
HPE X130 10G SFP+ LC LR Xcvr (JD094B)		YES	B7148
HPE X130 10G SFP+ LC ER 40km Xcvr (JG234A)		YES	B7143
HPE X130 10G SFP+ LC LH 80km Xcvr (JG915A)		YES	B7143
HPE X130 10G SFP+ LC LH80 tunable Xcvr (JL250A)		YES	R7180
HPE X240 10G SFP+ SFP+ 3m Direct Attach Copper Cable (JD097B)		NO	B7143
HPE X240 10G SFP+ SFP+ 3m Direct Attach Copper Cable (JD097C)		NO	B7143
HPE X240 SFP+ SFP+ 5m Direct Attach Copper Cable (JG081C)		NO	B7143
HPE X240 10G SFP+ SFP+ 0.65m Direct Attach Copper Cable (JD095C)		NO	B7143
HPE X240 10G SFP+ SFP+ 1.2m Direct Attach Copper Cable (JD096B)		NO	B7143
HPE X240 10G SFP+ SFP+ 1.2m Direct Attach Copper Cable (JD096C)		NO	B7143
HP 10500 8-port		HPE X130 10G SFP+ LC SR Xcvr (JD092B)	YES

Switch or module	Transceiver module (Product code)	Minimum software release	
		DDM support	Release version
10GbE SFP+ EB TAA-compliant Module (JG387A)	HPE X130 10G SFP+ LC LRM Xcvr (JD093B)	YES	B7143
	HPE X130 10G SFP+ LC LR Xcvr (JD094B)	YES	B7148
	HPE X130 10G SFP+ LC ER 40km Xcvr (JG234A)	YES	B7143
	HPE X130 10G SFP+ LC LH 80km Xcvr (JG915A)	YES	B7143
	HPE X130 10G SFP+ LC LH80 tunable Xcvr (JL250A)	YES	R7180
	HPE X240 10G SFP+ SFP+ 3m Direct Attach Copper Cable (JD097B)	NO	B7143
	HPE X240 10G SFP+ SFP+ 3m Direct Attach Copper Cable (JD097C)	NO	B7143
	HPE X240 SFP+ SFP+ 5m Direct Attach Copper Cable (JG081C)	NO	B7143
	HPE X240 10G SFP+ SFP+ 1.2m Direct Attach Copper Cable (JD096B)	NO	B7143
	HPE X240 10G SFP+ SFP+ 1.2m Direct Attach Copper Cable (JD096C)	NO	B7143
	HPE X240 10G SFP+ SFP+ 7m Direct Attach Copper Cable (JC784C)	NO	B7143
HP 10500 8-port 10GbE SFP+ EA TAA-compliant Module (JG388A)	HPE X130 10G SFP+ LC SR Xcvr (JD092B)	YES	B7143
	HPE X130 10G SFP+ LC LRM Xcvr (JD093B)	YES	B7143
	HPE X130 10G SFP+ LC LR Xcvr (JD094B)	YES	B7148
	HPE X130 10G SFP+ LC ER 40km Xcvr (JG234A)	YES	B7143
	HPE X130 10G SFP+ LC LH 80km Xcvr (JG915A)	YES	B7143
	HPE X130 10G SFP+ LC LH80 tunable Xcvr (JL250A)	YES	R7180
	HPE X240 10G SFP+ SFP+ 3m Direct Attach Copper Cable (JD097B)	NO	B7143
	HPE X240 10G SFP+ SFP+ 3m Direct Attach Copper Cable (JD097C)	NO	B7143
	HPE X240 SFP+ SFP+ 5m Direct Attach Copper Cable (JG081C)	NO	B7143
	HPE X240 10G SFP+ SFP+ 1.2m Direct Attach Copper Cable (JD096B)	NO	B7143
	HPE X240 10G SFP+ SFP+ 1.2m Direct Attach Copper Cable (JD096C)	NO	B7143
HPE X240 10G SFP+ SFP+ 7m Direct Attach Copper Cable (JC784C)	NO	B7143	
HP 10500 8-port 10GbE SFP+ SE TAA-compliant Module (JG389A)	HPE X130 10G SFP+ LC SR Xcvr (JD092B)	YES	B7143
	HPE X130 10G SFP+ LC LRM Xcvr (JD093B)	YES	B7143
	HPE X130 10G SFP+ LC LR Xcvr (JD094B)	YES	B7148
	HPE X130 10G SFP+ LC ER 40km Xcvr (JG234A)	YES	B7143

Switch or module	Transceiver module (Product code)	Minimum software release	
		DDM support	Release version
	HPE X130 10G SFP+ LC LH 80km Xcvr (JG915A)	YES	B7143
	HPE X130 10G SFP+ LC LH80 tunable Xcvr (JL250A)	YES	R7180
	HPE X240 10G SFP+ SFP+ 3m Direct Attach Copper Cable (JD097B)	NO	B7143
	HPE X240 10G SFP+ SFP+ 3m Direct Attach Copper Cable (JD097C)	NO	B7143
	HPE X240 SFP+ SFP+ 5m Direct Attach Copper Cable (JG081C)	NO	B7143
	HPE X240 10G SFP+ SFP+ 1.2m Direct Attach Copper Cable (JD096B)	NO	B7143
	HPE X240 10G SFP+ SFP+ 1.2m Direct Attach Copper Cable (JD096C)	NO	B7143
	HPE X240 10G SFP+ SFP+ 7m Direct Attach Copper Cable (JC784C)	NO	B7143
	HPE FlexNetwork 10500 32-port 10GbE SFP+ SF TAA-compliant Module (JG344A)	HPE X130 10G SFP+ LC SR Xcvr (JD092B)	YES
HPE X130 10G SFP+ LC LRM Xcvr (JD093B)		YES	B7143
HPE X130 10G SFP+ LC LR Xcvr (JD094B)		YES	B7148
HPE X130 10G SFP+ LC ER 40km Xcvr (JG234A)		YES	B7143
HPE X130 10G SFP+ LC LH 80km Xcvr (JG915A)		YES	B7143
HPE X130 10G SFP+ LC LH80 tunable Xcvr (JL250A)		YES	R7180
HPE X240 10G SFP+ SFP+ 3m Direct Attach Copper Cable (JD097B)		NO	B7143
HPE X240 10G SFP+ SFP+ 3m Direct Attach Copper Cable (JD097C)		NO	B7143
HPE X240 SFP+ SFP+ 5m Direct Attach Copper Cable (JG081C)		NO	B7143
HPE X240 10G SFP+ SFP+ 1.2m Direct Attach Copper Cable (JD096B)		NO	B7143
HPE X240 10G SFP+ SFP+ 1.2m Direct Attach Copper Cable (JD096C)		NO	B7143
HPE X240 10G SFP+ SFP+ 7m Direct Attach Copper Cable (JC784C)		NO	B7143
HP 10500 48-port 10GbE SFP+ SF TAA-compliant Module (JG345A)	HPE X130 10G SFP+ LC SR Xcvr (JD092B)	YES	B7143
	HPE X130 10G SFP+ LC LR Xcvr (JD094B)	YES	B7148
	HPE X130 10G SFP+ LC ER 40km Xcvr (JG234A)	YES	B7143
	HPE X130 10G SFP+ LC LH 80km Xcvr (JG915A)	YES	B7143
	HPE X130 10G SFP+ LC LH80 tunable Xcvr (JL250A)	YES	R7180
	HPE X240 10G SFP+ SFP+ 3m Direct Attach Copper Cable (JD097B)	NO	B7143
	HPE X240 10G SFP+ SFP+ 3m Direct Attach Copper	NO	B7143

Switch or module	Transceiver module (Product code)	Minimum software release		
		DDM support	Release version	
	Cable (JD097C)			
	HPE X240 SFP+ SFP+ 5m Direct Attach Copper Cable (JG081C)	NO	B7143	
	HPE X240 10G SFP+ SFP+ 1.2m Direct Attach Copper Cable (JD096B)	NO	B7143	
	HPE X240 10G SFP+ SFP+ 1.2m Direct Attach Copper Cable (JD096C)	NO	B7143	
HPE FlexNetwork 10500 48-port 10GbE SFP/SFP+ with MACsec M2SG Module (JH433A)	HPE X130 10G SFP+ LC SR Xcvr (JD092B)	YES	E7522	
	HPE X130 10G SFP+ LC LR Xcvr (JD094B)	YES	E7522	
	HPE X130 10G SFP+ LC ER 40km Xcvr (JG234A)	YES	E7522	
	HPE X130 10G SFP+ LC LH 80km Xcvr (JG915A)	YES	E7522	
	HPE X130 10G SFP+ LC LH80 tunable Xcvr (JL250A)	YES	E7522	
	HPE X240 10G SFP+ SFP+ 3m Direct Attach Copper Cable (JD097B)	NO	E7522	
	HPE X240 10G SFP+ SFP+ 3m Direct Attach Copper Cable (JD097C)	NO	E7522	
	HPE X240 SFP+ SFP+ 5m Direct Attach Copper Cable (JG081C)	NO	E7522	
	HPE X240 10G SFP+ SFP+ 0.65m Direct Attach Copper Cable (JD095C)	NO	E7522	
	HPE X240 10G SFP+ SFP+ 1.2m Direct Attach Copper Cable (JD096B)	NO	E7522	
	HPE X240 10G SFP+ SFP+ 1.2m Direct Attach Copper Cable (JD096C)	NO	E7522	
	HPE FlexNetwork 10500 32-port 10GbE SFP/SFP+/4-port 40GbE QSFP+ M2SG Module (JH432A)	HPE X130 10G SFP+ LC SR Xcvr (JD092B)	YES	E7522
		HPE X130 10G SFP+ LC LR Xcvr (JD094B)	YES	E7522
HPE X130 10G SFP+ LC ER 40km Xcvr (JG234A)		YES	E7522	
HPE X130 10G SFP+ LC LH 80km Xcvr (JG915A)		YES	E7522	
HPE X130 10G SFP+ LC LH80 tunable Xcvr (JL250A)		YES	E7522	
HPE X240 10G SFP+ SFP+ 3m Direct Attach Copper Cable (JD097B)		NO	E7522	
HPE X240 10G SFP+ SFP+ 3m Direct Attach Copper Cable (JD097C)		NO	E7522	
HPE X240 SFP+ SFP+ 5m Direct Attach Copper Cable (JG081C)		NO	E7522	
HPE X240 10G SFP+ SFP+ 0.65m Direct Attach Copper Cable (JD095C)		NO	E7522	
HPE X240 10G SFP+ SFP+ 1.2m Direct Attach Copper Cable (JD096B)		NO	E7522	
HPE X240 10G SFP+ SFP+ 1.2m Direct Attach Copper Cable (JD096C)		NO	E7522	

HPE FlexFabric 7900 switch series minimum software version requirements

Switch or module	Transceiver module (Product code)	Minimum software release	
		DDM support	Release version
HPE FlexFabric 7900 24-port 1/10GbE SFP+ FX Module (JG845A)	HPE X130 10G SFP+ LC SR Xcvr (JD092B)	YES	R2117
	HPE X130 10G SFP+ LC LR Xcvr (JD094B)	YES	R2117
	HPE X130 10G SFP+ LC ER 40km Xcvr (JG234A)	YES	R2117
	HPE X130 10G SFP+ LC LH 80km Xcvr (JG915A)	YES	R2117
	HPE X240 10G SFP+ SFP+ 3m Direct Attach Copper Cable (JD097B)	NO	R2117
	HPE X240 10G SFP+ SFP+ 3m Direct Attach Copper Cable (JD097C)	NO	R2117
	HPE X240 SFP+ SFP+ 5m Direct Attach Copper Cable (JG081C)	NO	R2117
	HPE X240 10G SFP+ SFP+ 0.65m Direct Attach Copper Cable (JD095B)	NO	R2117
	HPE X240 10G SFP+ SFP+ 0.65m Direct Attach Copper Cable (JD095C)	NO	R2117
	HPE X240 10G SFP+ SFP+ 1.2m Direct Attach Copper Cable (JD096B)	NO	R2117
	HPE X240 10G SFP+ SFP+ 1.2m Direct Attach Copper Cable (JD096C)	NO	R2117
	HPE X2A0 10G SFP+ to SFP+ 7m Active Optical Cable (JL290A)	YES	R2138P01
	HPE X2A0 10G SFP+ to SFP+ 10m Active Optical Cable (JL291A)	YES	R2138P01
	HPE X2A0 10G SFP+ to SFP+ 20m Active Optical Cable (JL292A)	YES	R2138P01
	HPE 10GBase-T SFP+ Transceiver (813874-B21)	NO	R2710
HPE FlexFabric 7900 2-port 100GbE CXP/6-port 40GbE QSFP+/4-port 10GbE SFP+ FX Module (JH002A)	HPE X130 10G SFP+ LC SR Xcvr (JD092B)	YES	R2138P01
	HPE X130 10G SFP+ LC LR Xcvr (JD094B)	YES	R2138P01
	HPE X130 10G SFP+ LC ER 40km Xcvr (JG234A)	YES	R2138P01
	HPE X130 10G SFP+ LC LH 80km Xcvr (JG915A)	YES	R2138P01
	HPE X240 10G SFP+ SFP+ 3m Direct Attach Copper Cable (JD097B)	NO	R2138P01
	HPE X240 10G SFP+ SFP+ 3m Direct Attach Copper Cable (JD097C)	NO	R2138P01
	HPE X240 SFP+ SFP+ 5m Direct Attach Copper Cable (JG081C)	NO	R2138P01
	HPE X240 10G SFP+ SFP+ 0.65m Direct Attach Copper	NO	R2138P01

Switch or module	Transceiver module (Product code)	Minimum software release	
		DDM support	Release version
	Cable (JD095B)		
	HPE X240 10G SFP+ SFP+ 0.65m Direct Attach Copper Cable (JD095C)	NO	R2138P01
	HPE X240 10G SFP+ SFP+ 1.2m Direct Attach Copper Cable (JD096B)	NO	R2138P01
	HPE X240 10G SFP+ SFP+ 1.2m Direct Attach Copper Cable (JD096C)	NO	R2138P01
	HPE X2A0 10G SFP+ to SFP+ 7m Active Optical Cable (JL290A)	YES	R2138P01
	HPE X2A0 10G SFP+ to SFP+ 10m Active Optical Cable (JL291A)	YES	R2138P01
	HPE X2A0 10G SFP+ to SFP+ 20m Active Optical Cable (JL292A)	YES	R2138P01

NOTE:

For the HPE FlexFabric 7900 24-port 1/10GbE SFP+ FX Module (JG845A), when using the HPE 10GBase-T SFP+ Transceiver (813874-B21) only add ports are supported and link-up only happens at auto-negotiation mode.

HPE FlexFabric 7500 switch series minimum software version requirements

Switch or module	Transceiver module (Product code)	Minimum software release	
		DDM support	Release version
HPE FlexNetwork 7500 8-port 10G SFP+ SC Module (JF290A)	HPE X130 10G SFP+ LC SR Xcvr (JD092B)	YES	B7148
	HPE X130 10G SFP+ LC LRM Xcvr (JD093B)	YES	B7148
	HPE X130 10G SFP+ LC LR Xcvr (JD094B)	YES	B7148
	HPE X130 10G SFP+ LC ER 40km Xcvr (JG234A)	YES	B7148
	HPE X130 10G SFP+ LC LH 80km Xcvr (JG915A)	YES	B7148
	HPE X130 10G SFP+ LC LH80 tunable Xcvr (JL250A)	YES	R7180
	HPE X240 10G SFP+ SFP+ 3m Direct Attach Copper Cable (JD097B)	NO	B7148
	HPE X240 10G SFP+ SFP+ 3m Direct Attach Copper Cable (JD097C)	NO	B7148
	HPE X240 SFP+ SFP+ 5m Direct Attach Copper Cable (JG081C)	NO	B7148
	HPE X240 10G SFP+ SFP+ 1.2m Direct Attach Copper Cable (JD096B)	NO	B7148

Switch or module	Transceiver module (Product code)	Minimum software release	
		DDM support	Release version
	HPE X240 10G SFP+ SFP+ 1.2m Direct Attach Copper Cable (JD096C)	NO	B7148
HPE FlexNetwork 7500 44-port SFP/4-port SFP+ SE Module (JH210A)	HPE X130 10G SFP+ LC SR Xcvr (JD092B)	YES	B7148
	HPE X130 10G SFP+ LC LR Xcvr (JD094B)	YES	B7148
	HPE X130 10G SFP+ LC ER 40km Xcvr (JG234A)	YES	B7148
	HPE X130 10G SFP+ LC LH 80km Xcvr (JG915A)	YES	B7148
	HPE X130 10G SFP+ LC LH80 tunable Xcvr (JL250A)	YES	R7180
	HPE X240 10G SFP+ SFP+ 3m Direct Attach Copper Cable (JD097B)	NO	B7148
	HPE X240 10G SFP+ SFP+ 3m Direct Attach Copper Cable (JD097C)	NO	B7148
	HPE X240 10G SFP+ SFP+ 0.65m Direct Attach Copper Cable (JD095C)	NO	B7148
	HPE X240 10G SFP+ SFP+ 1.2m Direct Attach Copper Cable (JD096B)	NO	B7148
	HPE X240 10G SFP+ SFP+ 1.2m Direct Attach Copper Cable (JD096C)	NO	B7148
HP 7500 44-port GbE / 4-port 10GbE SE TAA-compliant Module (JH218A)	HPE X130 10G SFP+ LC SR Xcvr (JD092B)	YES	B7148
	HPE X130 10G SFP+ LC LR Xcvr (JD094B)	YES	B7148
	HPE X130 10G SFP+ LC ER 40km Xcvr (JG234A)	YES	B7148
	HPE X130 10G SFP+ LC LH 80km Xcvr (JG915A)	YES	B7148
	HPE X130 10G SFP+ LC LH80 tunable Xcvr (JL250A)	YES	R7180
	HPE X240 10G SFP+ SFP+ 3m Direct Attach Copper Cable (JD097B)	NO	B7148
	HPE X240 10G SFP+ SFP+ 3m Direct Attach Copper Cable (JD097C)	NO	B7148
	HPE X240 10G SFP+ SFP+ 0.65m Direct Attach Copper Cable (JD095C)	NO	B7148
	HPE X240 10G SFP+ SFP+ 1.2m Direct Attach Copper Cable (JD096B)	NO	B7148
	HPE X240 10G SFP+ SFP+ 1.2m Direct Attach Copper Cable (JD096C)	NO	B7148
HPE FlexNetwork 7500 24-port SFP/4-port SFP+ SE Module (JH211A)	HPE X130 10G SFP+ LC SR Xcvr (JD092B)	YES	B7148
	HPE X130 10G SFP+ LC LR Xcvr (JD094B)	YES	B7148
	HPE X130 10G SFP+ LC ER 40km Xcvr (JG234A)	YES	B7148
	HPE X130 10G SFP+ LC LH 80km Xcvr (JG915A)	YES	B7148
	HPE X130 10G SFP+ LC LH80 tunable Xcvr (JL250A)	YES	R7180
	HPE X240 10G SFP+ SFP+ 3m Direct Attach Copper Cable (JD097B)	NO	B7148

Switch or module	Transceiver module (Product code)	Minimum software release	
		DDM support	Release version
	HPE X240 10G SFP+ SFP+ 3m Direct Attach Copper Cable (JD097C)	NO	B7148
	HPE X240 10G SFP+ SFP+ 0.65m Direct Attach Copper Cable (JD095C)	NO	B7148
	HPE X240 10G SFP+ SFP+ 1.2m Direct Attach Copper Cable (JD096B)	NO	B7148
	HPE X240 10G SFP+ SFP+ 1.2m Direct Attach Copper Cable (JD096C)	NO	B7148
HP 7500 24-port GbE / 4-port 10GbE SE TAA-compliant Module (JH219A)	HPE X130 10G SFP+ LC SR Xcvr (JD092B)	YES	B7148
	HPE X130 10G SFP+ LC LR Xcvr (JD094B)	YES	B7148
	HPE X130 10G SFP+ LC ER 40km Xcvr (JG234A)	YES	B7148
	HPE X130 10G SFP+ LC LH 80km Xcvr (JG915A)	YES	B7148
	HPE X130 10G SFP+ LC LH80 tunable Xcvr (JL250A)	YES	R7180
	HPE X240 10G SFP+ SFP+ 3m Direct Attach Copper Cable (JD097B)	NO	B7148
	HPE X240 10G SFP+ SFP+ 3m Direct Attach Copper Cable (JD097C)	NO	B7148
	HPE X240 10G SFP+ SFP+ 0.65m Direct Attach Copper Cable (JD095C)	NO	B7148
	HPE X240 10G SFP+ SFP+ 1.2m Direct Attach Copper Cable (JD096B)	NO	B7148
	HPE X240 10G SFP+ SFP+ 1.2m Direct Attach Copper Cable (JD096C)	NO	B7148
HPE FlexNetwork 7500 16-port 1/10GbE SFP+ SF Module (JH214A)	HPE X130 10G SFP+ LC SR Xcvr (JD092B)	YES	B7148
	HPE X130 10G SFP+ LC LR Xcvr (JD094B)	YES	B7148
	HPE X130 10G SFP+ LC ER 40km Xcvr (JG234A)	YES	B7148
	HPE X130 10G SFP+ LC LH 80km Xcvr (JG915A)	YES	B7148
	HPE X130 10G SFP+ LC LH80 tunable Xcvr (JL250A)	YES	R7180
	HPE X240 10G SFP+ SFP+ 3m Direct Attach Copper Cable (JD097B)	NO	B7148
	HPE X240 10G SFP+ SFP+ 3m Direct Attach Copper Cable (JD097C)	NO	B7148
	HPE X240 SFP+ SFP+ 5m Direct Attach Copper Cable (JG081C)	NO	B7148
	HPE X240 10G SFP+ SFP+ 0.65m Direct Attach Copper Cable (JD095C)	NO	B7148
	HPE X240 10G SFP+ SFP+ 1.2m Direct Attach Copper Cable (JD096B)	NO	B7148
	HPE X240 10G SFP+ SFP+ 1.2m Direct Attach Copper Cable (JD096C)	NO	B7148
	HPE X240 10G SFP+ SFP+ 7m Direct Attach Copper	NO	B7148

Switch or module	Transceiver module (Product code)	Minimum software release	
		DDM support	Release version
	Cable (JC784C)		
HP 7500 16-port GbE/10GbE SF TAA-compliant Module (JH222A)	HPE X130 10G SFP+ LC SR Xcvr (JD092B)	YES	B7148
	HPE X130 10G SFP+ LC LR Xcvr (JD094B)	YES	B7148
	HPE X130 10G SFP+ LC ER 40km Xcvr (JG234A)	YES	B7148
	HPE X130 10G SFP+ LC LH 80km Xcvr (JG915A)	YES	B7148
	HPE X130 10G SFP+ LC LH80 tunable Xcvr (JL250A)	YES	R7180
	HPE X240 10G SFP+ SFP+ 3m Direct Attach Copper Cable (JD097B)	NO	B7148
	HPE X240 10G SFP+ SFP+ 3m Direct Attach Copper Cable (JD097C)	NO	B7148
	HPE X240 SFP+ SFP+ 5m Direct Attach Copper Cable (JG081C)	NO	B7148
	HPE X240 10G SFP+ SFP+ 0.65m Direct Attach Copper Cable (JD095C)	NO	B7148
	HPE X240 10G SFP+ SFP+ 1.2m Direct Attach Copper Cable (JD096B)	NO	B7148
	HPE X240 10G SFP+ SFP+ 1.2m Direct Attach Copper Cable (JD096C)	NO	B7148
	HPE X240 10G SFP+ SFP+ 7m Direct Attach Copper Cable (JC784C)	NO	B7148
	HPE FlexNetwork 7500 8-port 10GbE SFP+ SC TAA-compliant Module (JC723A)	HPE X130 10G SFP+ LC SR Xcvr (JD092B)	YES
HPE X130 10G SFP+ LC LRM Xcvr (JD093B)		YES	B7148
HPE X130 10G SFP+ LC LR Xcvr (JD094B)		YES	B7148
HPE X130 10G SFP+ LC ER 40km Xcvr (JG234A)		YES	B7148
HPE X130 10G SFP+ LC LH 80km Xcvr (JG915A)		YES	B7148
HPE X130 10G SFP+ LC LH80 tunable Xcvr (JL250A)		YES	R7180
HPE X240 10G SFP+ SFP+ 3m Direct Attach Copper Cable (JD097B)		NO	B7148
HPE X240 10G SFP+ SFP+ 3m Direct Attach Copper Cable (JD097C)		NO	B7148
HPE X240 SFP+ SFP+ 5m Direct Attach Copper Cable (JG081C)		NO	B7148
HPE X240 10G SFP+ SFP+ 1.2m Direct Attach Copper Cable (JD096B)		NO	B7148
HPE X240 10G SFP+ SFP+ 1.2m Direct Attach Copper Cable (JD096C)		NO	B7148
HPE FlexNetwork 7500 2.4Tbps Fabric with 8-port 1/10GbE SFP+ and 2-port 40GbE QSFP+ MPU (JH209A)		HPE X130 10G SFP+ LC SR Xcvr (JD092B)	YES
	HPE X130 10G SFP+ LC LR Xcvr (JD094B)	YES	E7162P01
	HPE X130 10G SFP+ LC ER 40km Xcvr (JG234A)	YES	E7162P01
	HPE X130 10G SFP+ LC LH 80km Xcvr (JG915A)	YES	E7162P01

Switch or module	Transceiver module (Product code)	Minimum software release	
		DDM support	Release version
	HPE X130 10G SFP+ LC LH80 tunable Xcvr (JL250A)	YES	R7180
	HPE X240 10G SFP+ SFP+ 3m Direct Attach Copper Cable (JD097B)	NO	E7162P01
	HPE X240 10G SFP+ SFP+ 3m Direct Attach Copper Cable (JD097C)	NO	E7162P01
	HPE X240 SFP+ SFP+ 5m Direct Attach Copper Cable (JG081C)	NO	E7162P01
	HPE X240 10G SFP+ SFP+ 0.65m Direct Attach Copper Cable (JD095C)	NO	E7162P01
	HPE X240 10G SFP+ SFP+ 1.2m Direct Attach Copper Cable (JD096B)	NO	E7162P01
	HPE X240 10G SFP+ SFP+ 1.2m Direct Attach Copper Cable (JD096C)	NO	E7162P01
	HPE X240 10G SFP+ SFP+ 7m Direct Attach Copper Cable (JC784C)	NO	E7162P01
	HP 7500 2.4Tbps Fabric w/ 8-port GbE/10GbE and 2-port 40GbE TAA-compliant Main Processing Unit (JH217A)	HPE X130 10G SFP+ LC SR Xcvr (JD092B)	YES
HPE X130 10G SFP+ LC LR Xcvr (JD094B)		YES	E7162P01
HPE X130 10G SFP+ LC ER 40km Xcvr (JG234A)		YES	E7162P01
HPE X130 10G SFP+ LC LH 80km Xcvr (JG915A)		YES	E7162P01
HPE X130 10G SFP+ LC LH80 tunable Xcvr (JL250A)		YES	R7180
HPE X240 10G SFP+ SFP+ 3m Direct Attach Copper Cable (JD097B)		NO	E7162P01
HPE X240 10G SFP+ SFP+ 3m Direct Attach Copper Cable (JD097C)		NO	E7162P01
HPE X240 SFP+ SFP+ 5m Direct Attach Copper Cable (JG081C)		NO	E7162P01
HPE X240 10G SFP+ SFP+ 0.65m Direct Attach Copper Cable (JD095C)		NO	E7162P01
HPE X240 10G SFP+ SFP+ 1.2m Direct Attach Copper Cable (JD096B)		NO	E7162P01
HPE X240 10G SFP+ SFP+ 1.2m Direct Attach Copper Cable (JD096C)		NO	E7162P01
HPE X240 10G SFP+ SFP+ 7m Direct Attach Copper Cable (JC784C)		NO	E7162P01
HPE FlexNetwork 7500 12-port 1/10GbE SFP+ EC Module (JH309A)		HPE X130 10G SFP+ LC SR Xcvr (JD092B)	YES
	HPE X130 10G SFP+ LC LR Xcvr (JD094B)	YES	E7162P01
	HPE X130 10G SFP+ LC LH 80km Xcvr (JG915A)	YES	B7176P04
	HPE X130 10G SFP+ LC LH80 tunable Xcvr (JL250A)	YES	R7180
HPE FlexNetwork 7500 48-port 10GbE	HPE X130 10G SFP+ LC SR Xcvr (JD092B)	YES	E7522
	HPE X130 10G SFP+ LC LR Xcvr (JD094B)	YES	E7522

Switch or module	Transceiver module (Product code)	Minimum software release	
		DDM support	Release version
SFP/SFP+ M2RSG Module (JH430A)	HPE X130 10G SFP+ LC ER 40km Xcvr (JG234A)	YES	E7522
	HPE X130 10G SFP+ LC LH 80km Xcvr (JG915A)	YES	E7522
	HPE X130 10G SFP+ LC LH80 tunable Xcvr (JL250A)	YES	E7522
	HPE X240 10G SFP+ SFP+ 3m Direct Attach Copper Cable (JD097B)	NO	E7522
	HPE X240 10G SFP+ SFP+ 3m Direct Attach Copper Cable (JD097C)	NO	E7522
	HPE X240 SFP+ SFP+ 5m Direct Attach Copper Cable (JG081C)	NO	E7522
	HPE X240 10G SFP+ SFP+ 0.65m Direct Attach Copper Cable (JD095C)	NO	E7522
	HPE X240 10G SFP+ SFP+ 1.2m Direct Attach Copper Cable (JD096B)	NO	E7522
	HPE X240 10G SFP+ SFP+ 1.2m Direct Attach Copper Cable (JD096C)	NO	E7522
	HPE FlexNetwork 7500 44-port GbE SFP/4-port 10GbE SFP/SFP+ with MACsec SE Module (JH431A)	HPE X130 10G SFP+ LC SR Xcvr (JD092B)	YES
HPE X130 10G SFP+ LC LR Xcvr (JD094B)		YES	E7522
HPE X130 10G SFP+ LC ER 40km Xcvr (JG234A)		YES	E7522
HPE X130 10G SFP+ LC LH 80km Xcvr (JG915A)		YES	E7522
HPE X130 10G SFP+ LC LH80 tunable Xcvr (JL250A)		YES	E7522
HPE X240 10G SFP+ SFP+ 3m Direct Attach Copper Cable (JD097B)		NO	E7522
HPE X240 10G SFP+ SFP+ 3m Direct Attach Copper Cable (JD097C)		NO	E7522
HPE X240 SFP+ SFP+ 5m Direct Attach Copper Cable (JG081C)		NO	E7522
HPE X240 10G SFP+ SFP+ 0.65m Direct Attach Copper Cable (JD095C)		NO	E7522
HPE X240 10G SFP+ SFP+ 1.2m Direct Attach Copper Cable (JD096B)		NO	E7522
HPE X240 10G SFP+ SFP+ 1.2m Direct Attach Copper Cable (JD096C)		NO	E7522

HPE 6127XLG Blade switch series minimum software version requirements

Switch or module	Transceiver module (Product code)	Minimum software release	
		DDM support	Release version
HP 6127XLG Ethernet Blade Switch (787635-B21)	HPE X130 10G SFP+ LC SR Xcvr (JD092B)	YES	R2418P01
	HPE X130 10G SFP+ LC LR Xcvr (JD094B)	YES	R2418P01
	HPE X240 10G SFP+ SFP+ 3m Direct Attach Copper Cable (JD097C)	NO	R2418P01
	HPE X240 SFP+ SFP+ 5m Direct Attach Copper Cable (JG081C)	NO	R2418P01
	HPE X240 10G SFP+ SFP+ 0.65m Direct Attach Copper Cable (JD095C)	NO	R2418P01
	HPE X240 10G SFP+ SFP+ 1.2m Direct Attach Copper Cable (JD096C)	NO	R2418P01
	HPE X2A0 10G SFP+ to SFP+ 7m Active Optical Cable (JL290A)	YES	R2418P01
	HPE X2A0 10G SFP+ to SFP+ 10m Active Optical Cable (JL291A)	YES	R2418P01
	HPE X2A0 10G SFP+ to SFP+ 20m Active Optical Cable (JL292A)	YES	R2418P01
HP 6127XLG Ethernet Blade Switch with TAA (787635-B22)	HPE X130 10G SFP+ LC SR Xcvr (JD092B)	YES	R2418P01
	HPE X130 10G SFP+ LC LR Xcvr (JD094B)	YES	R2418P01
	HPE X240 10G SFP+ SFP+ 3m Direct Attach Copper Cable (JD097C)	NO	R2418P01
	HPE X240 SFP+ SFP+ 5m Direct Attach Copper Cable (JG081C)	NO	R2418P01
	HPE X240 10G SFP+ SFP+ 0.65m Direct Attach Copper Cable (JD095C)	NO	R2418P01
	HPE X240 10G SFP+ SFP+ 1.2m Direct Attach Copper Cable (JD096C)	NO	R2418P01
	HPE X2A0 10G SFP+ to SFP+ 7m Active Optical Cable (JL290A)	YES	R2418P01
	HPE X2A0 10G SFP+ to SFP+ 10m Active Optical Cable (JL291A)	YES	R2418P01
	HPE X2A0 10G SFP+ to SFP+ 20m Active Optical Cable (JL292A)	YES	R2418P01

HPE 6125XLG Blade switch series minimum software version requirements

Switch or module	Transceiver module (Product code)	Minimum software release	
		DDM support	Release version
HP 6125XLG Blade Switch (711307-B21)	HPE X130 10G SFP+ LC SR Xcvr (JD092B)	YES	R2418P01
	HPE X130 10G SFP+ LC LR Xcvr (JD094B)	YES	R2418P01
	HPE X240 10G SFP+ SFP+ 3m Direct Attach Copper Cable (JD097C)	NO	R2418P01
	HPE X240 SFP+ SFP+ 5m Direct Attach Copper Cable (JG081C)	NO	R2418P01
	HPE X240 10G SFP+ SFP+ 0.65m Direct Attach Copper Cable (JD095C)	NO	R2418P01
	HPE X240 10G SFP+ SFP+ 1.2m Direct Attach Copper Cable (JD096C)	NO	R2418P01
	HPE X2A0 10G SFP+ to SFP+ 7m Active Optical Cable (JL290A)	YES	R2418P01
	HPE X2A0 10G SFP+ to SFP+ 10m Active Optical Cable (JL291A)	YES	R2418P01
	HPE X2A0 10G SFP+ to SFP+ 20m Active Optical Cable (JL292A)	YES	R2418P01
HP 6125XLG Blade Switch with TAA (737230-B21)	HPE X130 10G SFP+ LC SR Xcvr (JD092B)	YES	R2418P01
	HPE X130 10G SFP+ LC LR Xcvr (JD094B)	YES	R2418P01
	HPE X240 10G SFP+ SFP+ 3m Direct Attach Copper Cable (JD097C)	NO	R2418P01
	HPE X240 SFP+ SFP+ 5m Direct Attach Copper Cable (JG081C)	NO	R2418P01
	HPE X240 10G SFP+ SFP+ 0.65m Direct Attach Copper Cable (JD095C)	NO	R2418P01
	HPE X240 10G SFP+ SFP+ 1.2m Direct Attach Copper Cable (JD096C)	NO	R2418P01
	HPE X2A0 10G SFP+ to SFP+ 7m Active Optical Cable (JL290A)	YES	R2418P01
	HPE X2A0 10G SFP+ to SFP+ 10m Active Optical Cable (JL291A)	YES	R2418P01
	HPE X2A0 10G SFP+ to SFP+ 20m Active Optical Cable (JL292A)	YES	R2418P01

HPE FlexFabric 5980 switch series minimum software version requirements

Switch or module	Transceiver module (Product code)	Minimum software release	
		DDM support	Release version
HPE FlexFabric 5980 48SFP+ 6QSFP28 Switch(JQ026A)	HPE X130 10G SFP+ LC SR Xcvr (JD092B)	YES	R2708
	HPE X130 10G SFP+ LC LR Xcvr (JD094B)	YES	R2708
	HPE X240 10G SFP+ SFP+ 3m Direct Attach Copper Cable (JD097C)	NO	R2708
	HPE X240 SFP+ SFP+ 5m Direct Attach Copper Cable (JG081C)	NO	R2708
	HPE X240 10G SFP+ SFP+ 0.65m Direct Attach Copper Cable (JD095C)	NO	R2708
	HPE X240 10G SFP+ SFP+ 1.2m Direct Attach Copper Cable (JD096C)	NO	R2708
	HPE X2A0 10G SFP+ to SFP+ 7m Active Optical Cable (JL290A)	YES	R2708
	HPE X2A0 10G SFP+ to SFP+ 10m Active Optical Cable (JL291A)	YES	R2708
	HPE X2A0 10G SFP+ to SFP+ 20m Active Optical Cable (JL292A)	YES	R2708

HPE FlexFabric 5950 switch series minimum software version requirements

Switch or module	Transceiver module (Product code)	Minimum software release	
		DDM support	Release version
HPE FlexFabric 5950 32QSFP28 Switch (JH321A)	HPE X130 10G SFP+ LC SR Xcvr (JD092B)	YES	R6123
	HPE X130 10G SFP+ LC LR Xcvr (JD094B)	YES	R6123
	HPE X240 10G SFP+ SFP+ 3m Direct Attach Copper Cable (JD097C)	NO	R6123
	HPE X240 SFP+ SFP+ 5m Direct Attach Copper Cable (JG081C)	NO	R6123
	HPE X240 10G SFP+ SFP+ 0.65m Direct Attach Copper Cable (JD095C)	NO	R6123
	HPE X240 10G SFP+ SFP+ 1.2m Direct Attach Copper Cable (JD096C)	NO	R6123
	HPE X2A0 10G SFP+ to SFP+ 7m Active Optical Cable (JL290A)	YES	R6123
	HPE X2A0 10G SFP+ to SFP+ 10m Active Optical Cable	YES	R6123

Switch or module	Transceiver module (Product code)	Minimum software release	
		DDM support	Release version
	(JL291A)		
	HPE X2A0 10G SFP+ to SFP+ 20m Active Optical Cable (JL292A)	YES	R6123
HPE FlexFabric 5950 32QSFP28 TAA-compliant Switch (JH322A)	HPE X130 10G SFP+ LC SR Xcvr (JD092B)	YES	R6123
	HPE X130 10G SFP+ LC LR Xcvr (JD094B)	YES	R6123
	HPE X240 10G SFP+ SFP+ 3m Direct Attach Copper Cable (JD097C)	NO	R6123
	HPE X240 SFP+ SFP+ 5m Direct Attach Copper Cable (JG081C)	NO	R6123
	HPE X240 10G SFP+ SFP+ 0.65m Direct Attach Copper Cable (JD095C)	NO	R6123
	HPE X240 10G SFP+ SFP+ 1.2m Direct Attach Copper Cable (JD096C)	NO	R6123
	HPE X2A0 10G SFP+ to SFP+ 7m Active Optical Cable (JL290A)	YES	R6123
	HPE X2A0 10G SFP+ to SFP+ 10m Active Optical Cable (JL291A)	YES	R6123
	HPE X2A0 10G SFP+ to SFP+ 20m Active Optical Cable (JL292A)	YES	R6123
HPE FlexFabric 5950 24-port SFP28 and 2-port QSFP28 Module (JH450A)	HPE X130 10G SFP+ LC SR Xcvr (JD092B)	YES	R6123
	HPE X130 10G SFP+ LC LR Xcvr (JD094B)	YES	R6123
	HPE X240 10G SFP+ SFP+ 3m Direct Attach Copper Cable (JD097C)	NO	R6123
	HPE X240 SFP+ SFP+ 5m Direct Attach Copper Cable (JG081C)	NO	R6123
	HPE X240 10G SFP+ SFP+ 0.65m Direct Attach Copper Cable (JD095C)	NO	R6123
	HPE X240 10G SFP+ SFP+ 1.2m Direct Attach Copper Cable (JD096C)	NO	R6123
	HPE X2A0 10G SFP+ to SFP+ 7m Active Optical Cable (JL290A)	YES	R6123
	HPE X2A0 10G SFP+ to SFP+ 10m Active Optical Cable (JL291A)	YES	R6123
	HPE X2A0 10G SFP+ to SFP+ 20m Active Optical Cable (JL292A)	YES	R6123
HPE FlexFabric 5950 48SFP28 8QSFP28 Switch (JH402A)	HPE X130 10G SFP+ LC SR Xcvr (JD092B)	YES	R6123
	HPE X130 10G SFP+ LC LR Xcvr (JD094B)	YES	R6123
	HPE X240 10G SFP+ SFP+ 3m Direct Attach Copper Cable (JD097C)	NO	R6123
	HPE X240 SFP+ SFP+ 5m Direct Attach Copper Cable (JG081C)	NO	R6123
	HPE X240 10G SFP+ SFP+ 0.65m Direct Attach Copper	NO	R6123

Switch or module	Transceiver module (Product code)	Minimum software release	
		DDM support	Release version
	Cable (JD095C)		
	HPE X240 10G SFP+ SFP+ 1.2m Direct Attach Copper Cable (JD096C)	NO	R6123
	HPE X2A0 10G SFP+ to SFP+ 7m Active Optical Cable (JL290A)	YES	R6123
	HPE X2A0 10G SFP+ to SFP+ 10m Active Optical Cable (JL291A)	YES	R6123
	HPE X2A0 10G SFP+ to SFP+ 20m Active Optical Cable (JL292A)	YES	R6123

HPE FlexFabric 5945 switch series minimum software version requirements

Switch or module	Transceiver module (Product code)	Minimum software release	
		DDM support	Release version
HPE FlexFabric 5945 48SFP28 8QSFP28 Switch(JQ074A)	HPE X130 10G SFP+ LC SR Xcvr (JD092B)	YES	R6508
	HPE X130 10G SFP+ LC LR Xcvr (JD094B)	YES	R6508
	HPE X240 10G SFP+ SFP+ 3m Direct Attach Copper Cable (JD097C)	NO	R6508
	HPE X240 SFP+ SFP+ 5m Direct Attach Copper Cable (JG081C)	NO	R6508
	HPE X240 10G SFP+ SFP+ 0.65m Direct Attach Copper Cable (JD095C)	NO	R6508
	HPE X240 10G SFP+ SFP+ 1.2m Direct Attach Copper Cable (JD096C)	NO	R6508
	HPE X2A0 10G SFP+ to SFP+ 7m Active Optical Cable (JL290A)	YES	R6508
	HPE X2A0 10G SFP+ to SFP+ 10m Active Optical Cable (JL291A)	YES	R6508
	HPE X2A0 10G SFP+ to SFP+ 20m Active Optical Cable (JL292A)	YES	R6508
	HPE X130 10G SFP+ LC BiDi 10km-Uplink Transceiver (JL737A)	YES	R6607
	HPE X130 10G SFP+ LC BiDi 10km-Downlink Transceiver (JL738A)	YES	R6607
	HPE X130 10G SFP+ LC BiDi 40km-Uplink Transceiver (JL739A)	YES	R6607
	HPE X130 10G SFP+ LC BiDi 40km-Downlink Transceiver (JL740A)	YES	R6607

NOTE:

For the transceiver module compatibility with HPE 5945 2-slot and HPE 5945 4-slot switches and modules, see *HPE FlexFabric 5945 Switch Series Installation Guide*.

HPE FlexFabric 5940 switch series minimum software version requirements

Switch or module	Transceiver module (Product code)	Minimum software release	
		DDM support	Release version
HPE FlexFabric 5940 48SFP+ 6QSFP+ Switch (JH395A)	HPE X130 10G SFP+ LC SR Xcvr (JD092B)	YES	R2509P02
	HPE X130 10G SFP+ LC LR Xcvr (JD094B)	YES	R2509P02
	HPE X240 10G SFP+ SFP+ 3m Direct Attach Copper Cable (JD097C)	NO	R2509P02
	HPE X240 SFP+ SFP+ 5m Direct Attach Copper Cable (JG081C)	NO	R2509P02
	HPE X240 10G SFP+ SFP+ 0.65m Direct Attach Copper Cable (JD095C)	NO	R2509P02
	HPE X240 10G SFP+ SFP+ 1.2m Direct Attach Copper Cable (JD096C)	NO	R2509P02
	HPE X2A0 10G SFP+ to SFP+ 7m Active Optical Cable (JL290A)	YES	R2509P02
	HPE X2A0 10G SFP+ to SFP+ 10m Active Optical Cable (JL291A)	YES	R2509P02
	HPE X2A0 10G SFP+ to SFP+ 20m Active Optical Cable (JL292A)	YES	R2509P02
	HPE X130 10G SFP+ LC BiDi 10km-Uplink Transceiver (JL737A)	YES	R2612P06
	HPE X130 10G SFP+ LC BiDi 10km-Downlink Transceiver (JL738A)	YES	R2612P06
	HPE X130 10G SFP+ LC BiDi 40km-Uplink Transceiver (JL739A)	YES	R2612P06
	HPE X130 10G SFP+ LC BiDi 40km-Downlink Transceiver (JL740A)	YES	R2612P06
	HPE 10GBase-T SFP+ Transceiver (813874-B21)	NO	R2609
HPE FlexFabric 5940 48SFP+ 6QSFP28 Switch (JH390A)	HPE X130 10G SFP+ LC SR Xcvr (JD092B)	YES	R2509P02
	HPE X130 10G SFP+ LC LR Xcvr (JD094B)	YES	R2509P02
	HPE X240 10G SFP+ SFP+ 3m Direct Attach Copper Cable (JD097C)	NO	R2509P02
	HPE X240 SFP+ SFP+ 5m Direct Attach Copper Cable (JG081C)	NO	R2509P02
	HPE X240 10G SFP+ SFP+ 0.65m Direct Attach Copper Cable (JD095C)	NO	R2509P02
	HPE X240 10G SFP+ SFP+ 1.2m Direct Attach Copper	NO	R2509P02

Switch or module	Transceiver module (Product code)	Minimum software release	
		DDM support	Release version
	Cable (JD096C)		
	HPE X2A0 10G SFP+ to SFP+ 7m Active Optical Cable (JL290A)	YES	R2509P02
	HPE X2A0 10G SFP+ to SFP+ 10m Active Optical Cable (JL291A)	YES	R2509P02
	HPE X2A0 10G SFP+ to SFP+ 20m Active Optical Cable (JL292A)	YES	R2509P02
	HPE X130 10G SFP+ LC BiDi 10km-Uplink Transceiver (JL737A)	YES	R2612P06
	HPE X130 10G SFP+ LC BiDi 10km-Downlink Transceiver (JL738A)	YES	R2612P06
	HPE X130 10G SFP+ LC BiDi 40km-Uplink Transceiver (JL739A)	YES	R2612P06
	HPE X130 10G SFP+ LC BiDi 40km-Downlink Transceiver (JL740A)	YES	R2612P06
	HPE 10GBase-T SFP+ Transceiver (813874-B21)	NO	R2609
	HPE FlexFabric 5940 48SFP+ 6QSFP28 TAA-compliant Switch (JH392A)	HPE X130 10G SFP+ LC SR Xcvr (JD092B)	YES
HPE X130 10G SFP+ LC LR Xcvr (JD094B)		YES	R2509P02
HPE X240 10G SFP+ SFP+ 3m Direct Attach Copper Cable (JD097C)		NO	R2509P02
HPE X240 SFP+ SFP+ 5m Direct Attach Copper Cable (JG081C)		NO	R2509P02
HPE X240 10G SFP+ SFP+ 0.65m Direct Attach Copper Cable (JD095C)		NO	R2509P02
HPE X240 10G SFP+ SFP+ 1.2m Direct Attach Copper Cable (JD096C)		NO	R2509P02
HPE X2A0 10G SFP+ to SFP+ 7m Active Optical Cable (JL290A)		YES	R2509P02
HPE X2A0 10G SFP+ to SFP+ 10m Active Optical Cable (JL291A)		YES	R2509P02
HPE X2A0 10G SFP+ to SFP+ 20m Active Optical Cable (JL292A)		YES	R2509P02
HPE X130 10G SFP+ LC BiDi 10km-Uplink Transceiver (JL737A)		YES	R2612P06
HPE X130 10G SFP+ LC BiDi 10km-Downlink Transceiver (JL738A)		YES	R2612P06
HPE X130 10G SFP+ LC BiDi 40km-Uplink Transceiver (JL739A)		YES	R2612P06
HPE X130 10G SFP+ LC BiDi 40km-Downlink Transceiver (JL740A)		YES	R2612P06
HPE 10GBase-T SFP+ Transceiver (813874-B21)		NO	R2609

NOTE:

- BIDI optical transceiver modules use different central wavelengths in transmit and receive directions, in order to implement bidirectional transmission of fiber signals over the same fiber.
- You must use the HPE X130 10G SFP+ LC BiDi 10km-Uplink Transceiver (JL737A) and HPE X130 10G SFP+ LC BiDi 10km-Downlink Transceiver (JL738A) in pairs.

HPE FlexFabric 5930 switch series minimum software version requirements

Switch or module	Transceiver module (Product code)	Minimum software release	
		DDM support	Release version
HPE 5930 24-port SFP+ and 2-port QSFP+ with MACsec Module (JH181A)	HPE X130 10G SFP+ LC SR Xcvr (JD092B)	YES	R2418P01
	HPE X130 10G SFP+ LC LRM Xcvr (JD093B)	YES	R2418P01
	HPE X130 10G SFP+ LC LR Xcvr (JD094B)	YES	R2418P01
	HPE X240 10G SFP+ SFP+ 3m Direct Attach Copper Cable (JD097C)	NO	R2418P01
	HPE X240 SFP+ SFP+ 5m Direct Attach Copper Cable (JG081C)	NO	R2418P01
	HPE X240 10G SFP+ SFP+ 0.65m Direct Attach Copper Cable (JD095C)	NO	R2418P01
	HPE X240 10G SFP+ SFP+ 1.2m Direct Attach Copper Cable (JD096C)	NO	R2418P01
	HPE X2A0 10G SFP+ to SFP+ 7m Active Optical Cable (JL290A)	YES	R2418P01
	HPE X2A0 10G SFP+ to SFP+ 10m Active Optical Cable (JL291A)	YES	R2418P01
	HPE X2A0 10G SFP+ to SFP+ 20m Active Optical Cable (JL292A)	YES	R2418P01
HPE 5930 24-port Converged Port and 2-port QSFP+ Module (JH184A)	HPE 10GBase-T SFP+ Transceiver (813874-B21)	NO	R2432P05
	HPE X130 10G SFP+ LC SR Xcvr (JD092B)	YES	R2418P01
	HPE X130 10G SFP+ LC LRM Xcvr (JD093B)	YES	R2418P01
	HPE X130 10G SFP+ LC LR Xcvr (JD094B)	YES	R2418P01
	HPE X190 8G/4G/2G SFP+ LC Short Wave Xcvr (JG879A)	YES	R2418P01
	HPE X190 8G/4G/2G SFP+ LC Long Wave Xcvr (JG880A)	YES	R2418P01
	HPE X240 10G SFP+ SFP+ 3m Direct Attach Copper Cable (JD097C)	NO	R2418P01
	HPE X240 SFP+ SFP+ 5m Direct Attach Copper Cable (JG081C)	NO	R2418P01
	HPE X240 10G SFP+ SFP+ 0.65m Direct Attach Copper Cable (JD095C)	NO	R2418P01

Switch or module	Transceiver module (Product code)	Minimum software release	
		DDM support	Release version
	HPE X240 10G SFP+ SFP+ 1.2m Direct Attach Copper Cable (JD096C)	NO	R2418P01
	HPE X2A0 10G SFP+ to SFP+ 7m Active Optical Cable (JL290A)	YES	R2418P01
	HPE X2A0 10G SFP+ to SFP+ 10m Active Optical Cable (JL291A)	YES	R2418P01
	HPE X2A0 10G SFP+ to SFP+ 20m Active Optical Cable (JL292A)	YES	R2418P01
	HPE 10GBase-T SFP+ Transceiver (813874-B21)	NO	R2432P05
	HPE 5930 24-port SFP+ and 2-port QSFP+ Module (JH180A)	HPE X130 10G SFP+ LC SR Xcvr (JD092B)	YES
HPE X130 10G SFP+ LC LR Xcvr (JD094B)		YES	R2418P01
HPE X240 10G SFP+ SFP+ 3m Direct Attach Copper Cable (JD097C)		NO	R2418P01
HPE X240 SFP+ SFP+ 5m Direct Attach Copper Cable (JG081C)		NO	R2418P01
HPE X240 10G SFP+ SFP+ 0.65m Direct Attach Copper Cable (JD095C)		NO	R2418P01
HPE X240 10G SFP+ SFP+ 1.2m Direct Attach Copper Cable (JD096C)		NO	R2418P01
HPE X2A0 10G SFP+ to SFP+ 7m Active Optical Cable (JL290A)		YES	R2418P01
HPE X2A0 10G SFP+ to SFP+ 10m Active Optical Cable (JL291A)		YES	R2418P01
HPE X2A0 10G SFP+ to SFP+ 20m Active Optical Cable (JL292A)		YES	R2418P01
HPE 10GBase-T SFP+ Transceiver (813874-B21)		NO	R2432P05

HPE FlexFabric 5920 switch series minimum software version requirements

Switch or module	Transceiver module (Product code)	Minimum software release	
		DDM support	Release version
HPE FlexFabric 5920AF 24XG TAA-compliant Switch(JG555A)	HPE X130 10G SFP+ LC SR Xcvr (JD092B)	YES	R2432P05
	HPE X130 10G SFP+ LC LRM Xcvr (JD093B)	YES	R2432P05
	HPE X130 10G SFP+ LC LR Xcvr (JD094B)	YES	R2432P05
	HPE X240 10G SFP+ SFP+ 3m Direct Attach Copper Cable (JD097C)	NO	R2432P05
	HPE X240 SFP+ SFP+ 5m Direct Attach Copper Cable	NO	R2432P05

Switch or module	Transceiver module (Product code)	Minimum software release	
		DDM support	Release version
	(JG081C)		
	HPE X240 10G SFP+ SFP+ 0.65m Direct Attach Copper Cable (JD095C)	NO	R2432P05
	HPE X240 10G SFP+ SFP+ 1.2m Direct Attach Copper Cable (JD096C)	NO	R2432P05
HPE FlexFabric 5920AF 24XG Switch(JG296A)	HPE X130 10G SFP+ LC SR Xcvr (JD092B)	YES	R2432P05
	HPE X130 10G SFP+ LC LRM Xcvr (JD093B)	YES	R2432P05
	HPE X130 10G SFP+ LC LR Xcvr (JD094B)	YES	R2432P05
	HPE X240 10G SFP+ SFP+ 3m Direct Attach Copper Cable (JD097C)	NO	R2432P05
	HPE X240 SFP+ SFP+ 5m Direct Attach Copper Cable (JG081C)	NO	R2432P05
	HPE X240 10G SFP+ SFP+ 0.65m Direct Attach Copper Cable (JD095C)	NO	R2432P05
	HPE X240 10G SFP+ SFP+ 1.2m Direct Attach Copper Cable (JD096C)	NO	R2432P05

HPE FlexFabric 5900 switch series minimum software version requirements

Switch or module	Transceiver module (Product code)	Minimum software release	
		DDM support	Release version
HPE FlexFabric 5900AF 48XG 4QSFP+ Switch (JC772A)	HPE X130 10G SFP+ LC SR Xcvr (JD092B)	YES	R2418P01
	HPE X130 10G SFP+ LC LRM Xcvr (JD093B)	YES	R2418P01
	HPE X130 10G SFP+ LC LR Xcvr (JD094B)	YES	R2418P01
	HPE X240 10G SFP+ SFP+ 3m Direct Attach Copper Cable (JD097C)	NO	R2418P01
	HPE X240 SFP+ SFP+ 5m Direct Attach Copper Cable (JG081C)	NO	R2418P01
	HPE X240 10G SFP+ SFP+ 0.65m Direct Attach Copper Cable (JD095C)	NO	R2418P01
	HPE X240 10G SFP+ SFP+ 1.2m Direct Attach Copper Cable (JD096C)	NO	R2418P01
	HPE X2A0 10G SFP+ to SFP+ 7m Active Optical Cable (JL290A)	YES	R2418P01
	HPE X2A0 10G SFP+ to SFP+ 10m Active Optical Cable (JL291A)	YES	R2418P01
	HPE X2A0 10G SFP+ to SFP+ 20m Active Optical Cable (JL292A)	YES	R2418P01

Switch or module	Transceiver module (Product code)	Minimum software release		
		DDM support	Release version	
	HPE 10GBase-T SFP+ Transceiver (813874-B21)	NO	R2432P05	
HPE FlexFabric 5900AF 48XG 4QSFP+ TAA-compliant Switch (JG554A)	HPE X130 10G SFP+ LC SR Xcvr (JD092B)	YES	R2418P01	
	HPE X130 10G SFP+ LC LRM Xcvr (JD093B)	YES	R2418P01	
	HPE X130 10G SFP+ LC LR Xcvr (JD094B)	YES	R2418P01	
	HPE X240 10G SFP+ SFP+ 3m Direct Attach Copper Cable (JD097C)	NO	R2418P01	
	HPE X240 SFP+ SFP+ 5m Direct Attach Copper Cable (JG081C)	NO	R2418P01	
	HPE X240 10G SFP+ SFP+ 0.65m Direct Attach Copper Cable (JD095C)	NO	R2418P01	
	HPE X240 10G SFP+ SFP+ 1.2m Direct Attach Copper Cable (JD096C)	NO	R2418P01	
	HPE X2A0 10G SFP+ to SFP+ 7m Active Optical Cable (JL290A)	YES	R2418P01	
	HPE X2A0 10G SFP+ to SFP+ 10m Active Optical Cable (JL291A)	YES	R2418P01	
	HPE X2A0 10G SFP+ to SFP+ 20m Active Optical Cable (JL292A)	YES	R2418P01	
		HPE 10GBase-T SFP+ Transceiver (813874-B21)	NO	R2432P05
	HPE FlexFabric 5900AF 48G 4XG 2QSFP+ Switch (JG510A)	HPE X130 10G SFP+ LC SR Xcvr (JD092B)	YES	R2418P01
HPE X130 10G SFP+ LC LR Xcvr (JD094B)		YES	R2418P01	
HPE X240 10G SFP+ SFP+ 3m Direct Attach Copper Cable (JD097C)		NO	R2418P01	
HPE X240 SFP+ SFP+ 5m Direct Attach Copper Cable (JG081C)		NO	R2418P01	
HPE X240 10G SFP+ SFP+ 0.65m Direct Attach Copper Cable (JD095C)		NO	R2418P01	
HPE X240 10G SFP+ SFP+ 1.2m Direct Attach Copper Cable (JD096C)		NO	R2418P01	
HPE X2A0 10G SFP+ to SFP+ 7m Active Optical Cable (JL290A)		YES	R2418P01	
HPE X2A0 10G SFP+ to SFP+ 10m Active Optical Cable (JL291A)		YES	R2418P01	
HPE X2A0 10G SFP+ to SFP+ 20m Active Optical Cable (JL292A)		YES	R2418P01	
		HPE 10GBase-T SFP+ Transceiver (813874-B21)	NO	R2432P05
HPE FlexFabric 5900AF 48G 4XG 2QSFP+ TAA-compliant Switch (JH038A)	HPE X130 10G SFP+ LC SR Xcvr (JD092B)	YES	R2418P01	
	HPE X130 10G SFP+ LC LR Xcvr (JD094B)	YES	R2418P01	
	HPE X240 10G SFP+ SFP+ 3m Direct Attach Copper Cable (JD097C)	NO	R2418P01	
	HPE X240 SFP+ SFP+ 5m Direct Attach Copper Cable	NO	R2418P01	

Switch or module	Transceiver module (Product code)	Minimum software release	
		DDM support	Release version
	(JG081C)		
	HPE X240 10G SFP+ SFP+ 0.65m Direct Attach Copper Cable (JD095C)	NO	R2418P01
	HPE X240 10G SFP+ SFP+ 1.2m Direct Attach Copper Cable (JD096C)	NO	R2418P01
	HPE X2A0 10G SFP+ to SFP+ 7m Active Optical Cable (JL290A)	YES	R2418P01
	HPE X2A0 10G SFP+ to SFP+ 10m Active Optical Cable (JL291A)	YES	R2418P01
	HPE X2A0 10G SFP+ to SFP+ 20m Active Optical Cable (JL292A)	YES	R2418P01
	HPE 10GBase-T SFP+ Transceiver (813874-B21)	NO	R2432P05
HPE FlexFabric 5900CP 48XG 4QSFP+ Switch (JG838A)	HPE X130 10G SFP+ LC SR Xcvr (JD092B)	YES	R2418P01
	HPE X130 10G SFP+ LC LRM Xcvr (JD093B)	YES	R2418P01
	HPE X130 10G SFP+ LC LR Xcvr (JD094B)	YES	R2418P01
	HPE X190 8G/4G/2G SFP+ LC Short Wave Xcvr (JG879A)	YES	R2418P01
	HPE X190 8G/4G/2G SFP+ LC Long Wave Xcvr (JG880A)	YES	R2418P01
	HPE X240 10G SFP+ SFP+ 3m Direct Attach Copper Cable (JD097C)	NO	R2418P01
	HPE X240 SFP+ SFP+ 5m Direct Attach Copper Cable (JG081C)	NO	R2418P01
	HPE X240 10G SFP+ SFP+ 0.65m Direct Attach Copper Cable (JD095C)	NO	R2418P01
	HPE X240 10G SFP+ SFP+ 1.2m Direct Attach Copper Cable (JD096C)	NO	R2418P01
	HPE X2A0 10G SFP+ to SFP+ 7m Active Optical Cable (JL290A)	YES	R2418P01
	HPE X2A0 10G SFP+ to SFP+ 10m Active Optical Cable (JL291A)	YES	R2418P01
	HPE X2A0 10G SFP+ to SFP+ 20m Active Optical Cable (JL292A)	YES	R2418P01
	HPE 10GBase-T SFP+ Transceiver (813874-B21)	NO	R2432P05
HPE FlexFabric 5900CP 48XG 4QSFP+ TAA-compliant Switch (JH036A)	HPE X130 10G SFP+ LC SR Xcvr (JD092B)	YES	R2418P01
	HPE X130 10G SFP+ LC LRM Xcvr (JD093B)	YES	R2418P01
	HPE X130 10G SFP+ LC LR Xcvr (JD094B)	YES	R2418P01
	HPE X190 8G/4G/2G SFP+ LC Short Wave Xcvr (JG879A)	YES	R2418P01
	HPE X190 8G/4G/2G SFP+ LC Long Wave Xcvr (JG880A)	YES	R2418P01

Switch or module	Transceiver module (Product code)	Minimum software release	
		DDM support	Release version
	HPE X240 10G SFP+ SFP+ 3m Direct Attach Copper Cable (JD097C)	NO	R2418P01
	HPE X240 SFP+ SFP+ 5m Direct Attach Copper Cable (JG081C)	NO	R2418P01
	HPE X240 10G SFP+ SFP+ 0.65m Direct Attach Copper Cable (JD095C)	NO	R2418P01
	HPE X240 10G SFP+ SFP+ 1.2m Direct Attach Copper Cable (JD096C)	NO	R2418P01
	HPE X2A0 10G SFP+ to SFP+ 7m Active Optical Cable (JL290A)	YES	R2418P01
	HPE X2A0 10G SFP+ to SFP+ 10m Active Optical Cable (JL291A)	YES	R2418P01
	HPE X2A0 10G SFP+ to SFP+ 20m Active Optical Cable (JL292A)	YES	R2418P01
	HPE 10GBase-T SFP+ Transceiver (813874-B21)	NO	R2432P05

HPE FlexFabric 5830 switch series minimum software version requirements

Switch or module	Transceiver module (Product code)	Minimum software release	
		DDM support	Release version
HP A5830AF-48G Switch w/1 Interface Slot (JC691A)	HPE X130 10G SFP+ LC SR Xcvr (JD092B)	YES	R1118P09
	HPE X130 10G SFP+ LC LRM Xcvr (JD093B)	YES	R1118P09
	HPE X130 10G SFP+ LC LR Xcvr (JD094B)	YES	R1118P09
	HPE X130 10G SFP+ LC ER 40km Xcvr (JG234A)	YES	R1118P09
	HPE X130 10G SFP+ LC LH 80km Xcvr (JG915A)	YES	R1118P09
	HPE X240 10G SFP+ SFP+ 3m Direct Attach Copper Cable (JD097B)	NO	R1118P09
	HPE X240 10G SFP+ SFP+ 3m Direct Attach Copper Cable (JD097C)	NO	R1118P09
	HPE X240 SFP+ SFP+ 5m Direct Attach Copper Cable (JG081C)	NO	R1118P09
	HPE X240 10G SFP+ SFP+ 0.65m Direct Attach Copper Cable (JD095B)	NO	R1118P09
	HPE X240 10G SFP+ SFP+ 0.65m Direct Attach Copper Cable (JD095C)	NO	R1118P09
	HPE X240 10G SFP+ SFP+ 1.2m Direct Attach Copper Cable (JD096B)	NO	R1118P09

Switch or module	Transceiver module (Product code)	Minimum software release	
		DDM support	Release version
	HPE X240 10G SFP+ SFP+ 1.2m Direct Attach Copper Cable (JD096C)	NO	R1118P09
	HPE X240 10G SFP+ SFP+ 7m Direct Attach Copper Cable (JC784C)	NO	R1118P09
HP A5830AF-96G Switch (JC694A)	HPE X130 10G SFP+ LC SR Xcvr (JD092B)	YES	R1118P09
	HPE X130 10G SFP+ LC LRM Xcvr (JD093B)	YES	R1118P09
	HPE X130 10G SFP+ LC LR Xcvr (JD094B)	YES	R1118P09
	HPE X130 10G SFP+ LC ER 40km Xcvr (JG234A)	YES	R1118P09
	HPE X130 10G SFP+ LC LH 80km Xcvr (JG915A)	YES	R1118P09
	HPE X240 10G SFP+ SFP+ 3m Direct Attach Copper Cable (JD097B)	NO	R1118P09
	HPE X240 10G SFP+ SFP+ 3m Direct Attach Copper Cable (JD097C)	NO	R1118P09
	HPE X240 SFP+ SFP+ 5m Direct Attach Copper Cable (JG081C)	NO	R1118P09
	HPE X240 10G SFP+ SFP+ 0.65m Direct Attach Copper Cable (JD095B)	NO	R1118P09
	HPE X240 10G SFP+ SFP+ 0.65m Direct Attach Copper Cable (JD095C)	NO	R1118P09
	HPE X240 10G SFP+ SFP+ 1.2m Direct Attach Copper Cable (JD096B)	NO	R1118P09
	HPE X240 10G SFP+ SFP+ 1.2m Direct Attach Copper Cable (JD096C)	NO	R1118P09
	HPE X240 10G SFP+ SFP+ 7m Direct Attach Copper Cable (JC784C)	NO	R1118P09

HPE FlexFabric 5710 Switch series minimum software version requirements

Switch or module	Transceiver module (Product code)	Minimum software release	
		DDM support	Release version
HPE FlexFabric 5710 48SFP+ 6QSFP+ or 2QSFP28 Switch (JL585A)	HPE X130 10G SFP+ LC SR Xcvr (JD092B)	YES	R2612
	HPE X130 10G SFP+ LC LR Xcvr (JD094B)	YES	R2612
	HPE X240 10G SFP+ SFP+ 3m Direct Attach Copper Cable (JD097C)	NO	R2612
	HPE X240 SFP+ SFP+ 5m Direct Attach Copper Cable (JG081C)	NO	R2612
	HPE X240 10G SFP+ SFP+ 0.65m Direct Attach Copper	NO	R2612

Switch or module	Transceiver module (Product code)	Minimum software release	
		DDM support	Release version
	Cable (JD095C)		
	HPE X240 10G SFP+ SFP+ 1.2m Direct Attach Copper Cable (JD096C)	NO	R2612
	HPE X2A0 10G SFP+ to SFP+ 7m Active Optical Cable (JL290A)	YES	R2612
	HPE X2A0 10G SFP+ to SFP+ 10m Active Optical Cable (JL291A)	YES	R2612
	HPE X2A0 10G SFP+ to SFP+ 20m Active Optical Cable (JL292A)	YES	R2612
	HPE X130 10G SFP+ LC BiDi 10km-Uplink Transceiver (JL737A)	YES	R2612P06
	HPE X130 10G SFP+ LC BiDi 10km-Downlink Transceiver (JL738A)	YES	R2612P06
	HPE X130 10G SFP+ LC BiDi 40km-Uplink Transceiver (JL739A)	YES	R2612P06
	HPE X130 10G SFP+ LC BiDi 40km-Downlink Transceiver (JL740A)	YES	R2612P06
HPE FlexFabric 5710 24SFP+ 6QSFP+ or 2QSFP28 Switch (JL587A)	HPE X130 10G SFP+ LC SR Xcvr (JD092B)	YES	R2612P01
	HPE X130 10G SFP+ LC LR Xcvr (JD094B)	YES	R2612P01
	HPE X240 10G SFP+ SFP+ 3m Direct Attach Copper Cable (JD097C)	NO	R2612P01
	HPE X240 SFP+ SFP+ 5m Direct Attach Copper Cable (JG081C)	NO	R2612P01
	HPE X240 10G SFP+ SFP+ 0.65m Direct Attach Copper Cable (JD095C)	NO	R2612P01
	HPE X240 10G SFP+ SFP+ 1.2m Direct Attach Copper Cable (JD096C)	NO	R2612P01
	HPE X2A0 10G SFP+ to SFP+ 7m Active Optical Cable (JL290A)	YES	R2612P01
	HPE X2A0 10G SFP+ to SFP+ 10m Active Optical Cable (JL291A)	YES	R2612P01
	HPE X2A0 10G SFP+ to SFP+ 20m Active Optical Cable (JL292A)	YES	R2612P01
	HPE X130 10G SFP+ LC BiDi 10km-Uplink Transceiver (JL737A)	YES	R2612P06
	HPE X130 10G SFP+ LC BiDi 10km-Downlink Transceiver (JL738A)	YES	R2612P06
	HPE X130 10G SFP+ LC BiDi 40km-Uplink Transceiver (JL739A)	YES	R2612P06
	HPE X130 10G SFP+ LC BiDi 40km-Downlink Transceiver (JL740A)	YES	R2612P06

NOTE:

- BIDirectional optical transceiver modules use different central wavelengths in transmit and receive directions, in order to implement bidirectional transmission of fiber signals over the same fiber.
- You must use the HPE X130 10G SFP+ LC BiDi 10km-Uplink Transceiver (JL737A) and HPE X130 10G SFP+ LC BiDi 10km-Downlink Transceiver (JL738A) in pairs.

HPE FlexFabric 5700 switch series minimum software version requirements

Switch or module	Transceiver module (Product code)	Minimum software release	
		DDM support	Release version
HPE FlexFabric 5700 40XG 2QSFP+ Switch (JG896A)	HPE X130 10G SFP+ LC SR Xcvr (JD092B)	YES	R2418P01
	HPE X130 10G SFP+ LC LR Xcvr (JD094B)	YES	R2418P01
	HPE X240 10G SFP+ SFP+ 3m Direct Attach Copper Cable (JD097C)	NO	R2418P01
	HPE X240 SFP+ SFP+ 5m Direct Attach Copper Cable (JG081C)	NO	R2418P01
	HPE X240 10G SFP+ SFP+ 0.65m Direct Attach Copper Cable (JD095C)	NO	R2418P01
	HPE X240 10G SFP+ SFP+ 1.2m Direct Attach Copper Cable (JD096C)	NO	R2418P01
	HPE X2A0 10G SFP+ to SFP+ 7m Active Optical Cable (JL290A)	YES	R2418P01
	HPE X2A0 10G SFP+ to SFP+ 10m Active Optical Cable (JL291A)	YES	R2418P01
	HPE X2A0 10G SFP+ to SFP+ 20m Active Optical Cable (JL292A)	YES	R2418P01
	HPE 10GBase-T SFP+ Transceiver (813874-B21)	NO	R2432P05
HPE FlexFabric 5700 40XG 2QSFP+ TAA-compliant Switch (JG897A)	HPE X130 10G SFP+ LC SR Xcvr (JD092B)	YES	R2418P01
	HPE X130 10G SFP+ LC LR Xcvr (JD094B)	YES	R2418P01
	HPE X240 10G SFP+ SFP+ 3m Direct Attach Copper Cable (JD097C)	NO	R2418P01
	HPE X240 SFP+ SFP+ 5m Direct Attach Copper Cable (JG081C)	NO	R2418P01
	HPE X240 10G SFP+ SFP+ 0.65m Direct Attach Copper Cable (JD095C)	NO	R2418P01
	HPE X240 10G SFP+ SFP+ 1.2m Direct Attach Copper Cable (JD096C)	NO	R2418P01
	HPE X2A0 10G SFP+ to SFP+ 7m Active Optical Cable (JL290A)	YES	R2418P01
	HPE X2A0 10G SFP+ to SFP+ 10m Active Optical Cable (JL291A)	YES	R2418P01
	HPE X2A0 10G SFP+ to SFP+ 20m Active Optical Cable	YES	R2418P01

Switch or module	Transceiver module (Product code)	Minimum software release		
		DDM support	Release version	
	(JL292A)			
	HPE 10GBase-T SFP+ Transceiver (813874-B21)	NO	R2432P05	
HPE FlexFabric 5700 48G 4XG 2QSFP+ Switch (JG894A)	HPE X130 10G SFP+ LC SR Xcvr (JD092B)	YES	R2418P01	
	HPE X130 10G SFP+ LC LR Xcvr (JD094B)	YES	R2418P01	
	HPE X240 10G SFP+ SFP+ 3m Direct Attach Copper Cable (JD097C)	NO	R2418P01	
	HPE X240 SFP+ SFP+ 5m Direct Attach Copper Cable (JG081C)	NO	R2418P01	
	HPE X240 10G SFP+ SFP+ 0.65m Direct Attach Copper Cable (JD095C)	NO	R2418P01	
	HPE X240 10G SFP+ SFP+ 1.2m Direct Attach Copper Cable (JD096C)	NO	R2418P01	
	HPE X2A0 10G SFP+ to SFP+ 7m Active Optical Cable (JL290A)	YES	R2418P01	
	HPE X2A0 10G SFP+ to SFP+ 10m Active Optical Cable (JL291A)	YES	R2418P01	
	HPE X2A0 10G SFP+ to SFP+ 20m Active Optical Cable (JL292A)	YES	R2418P01	
	HPE 10GBase-T SFP+ Transceiver (813874-B21)	NO	R2432P05	
	HPE FlexFabric 5700 48G 4XG 2QSFP+ TAA-compliant Switch (JG895A)	HPE X130 10G SFP+ LC SR Xcvr (JD092B)	YES	R2418P01
		HPE X130 10G SFP+ LC LR Xcvr (JD094B)	YES	R2418P01
HPE X240 10G SFP+ SFP+ 3m Direct Attach Copper Cable (JD097C)		NO	R2418P01	
HPE X240 SFP+ SFP+ 5m Direct Attach Copper Cable (JG081C)		NO	R2418P01	
HPE X240 10G SFP+ SFP+ 0.65m Direct Attach Copper Cable (JD095C)		NO	R2418P01	
HPE X240 10G SFP+ SFP+ 1.2m Direct Attach Copper Cable (JD096C)		NO	R2418P01	
HPE X2A0 10G SFP+ to SFP+ 7m Active Optical Cable (JL290A)		YES	R2418P01	
HPE X2A0 10G SFP+ to SFP+ 10m Active Optical Cable (JL291A)		YES	R2418P01	
HPE X2A0 10G SFP+ to SFP+ 20m Active Optical Cable (JL292A)		YES	R2418P01	
HPE 10GBase-T SFP+ Transceiver (813874-B21)		NO	R2432P05	
HPE FlexFabric 5700 32XGT 8XG 2QSFP+ Switch (JG898A)		HPE X130 10G SFP+ LC SR Xcvr (JD092B)	YES	R2418P01
		HPE X130 10G SFP+ LC LR Xcvr (JD094B)	YES	R2418P01
	HPE X240 10G SFP+ SFP+ 3m Direct Attach Copper Cable (JD097C)	NO	R2418P01	
	HPE X240 SFP+ SFP+ 5m Direct Attach Copper Cable	NO	R2418P01	

Switch or module	Transceiver module (Product code)	Minimum software release	
		DDM support	Release version
	(JG081C)		
	HPE X240 10G SFP+ SFP+ 0.65m Direct Attach Copper Cable (JD095C)	NO	R2418P01
	HPE X240 10G SFP+ SFP+ 1.2m Direct Attach Copper Cable (JD096C)	NO	R2418P01
	HPE X2A0 10G SFP+ to SFP+ 7m Active Optical Cable (JL290A)	YES	R2418P01
	HPE X2A0 10G SFP+ to SFP+ 10m Active Optical Cable (JL291A)	YES	R2418P01
	HPE X2A0 10G SFP+ to SFP+ 20m Active Optical Cable (JL292A)	YES	R2418P01
	HPE 10GBase-T SFP+ Transceiver (813874-B21)	NO	R2432P05
	HPE FlexFabric 5700 32XGT 8XG 2QSFP+ TAA-compliant Switch (JG899A)	HPE X130 10G SFP+ LC SR Xcvr (JD092B)	YES
HPE X130 10G SFP+ LC LR Xcvr (JD094B)		YES	R2418P01
HPE X240 10G SFP+ SFP+ 3m Direct Attach Copper Cable (JD097C)		NO	R2418P01
HPE X240 SFP+ SFP+ 5m Direct Attach Copper Cable (JG081C)		NO	R2418P01
HPE X240 10G SFP+ SFP+ 0.65m Direct Attach Copper Cable (JD095C)		NO	R2418P01
HPE X240 10G SFP+ SFP+ 1.2m Direct Attach Copper Cable (JD096C)		NO	R2418P01
HPE X2A0 10G SFP+ to SFP+ 7m Active Optical Cable (JL290A)		YES	R2418P01
HPE X2A0 10G SFP+ to SFP+ 10m Active Optical Cable (JL291A)		YES	R2418P01
HPE X2A0 10G SFP+ to SFP+ 20m Active Optical Cable (JL292A)		YES	R2418P01
HPE 10GBase-T SFP+ Transceiver (813874-B21)		NO	R2432P05

HPE FlexNetwork 5520 HI switch series minimum software version requirements

Switch or module	Transceiver module (Product code)	Minimum software release	
		DDM support	Release version
HPE FlexNetwork 5520HI 24G 4SFP+ 24 10/100/1000BASE-T 4 10G/1G BASE-X	HPE X130 10G SFP+ LC SR Xcvr (JD092B)	YES	R6525
	HPE X130 10G SFP+ LC LR Xcvr (JD094B)	YES	R6525
	HPE X240 10G SFP+ SFP+ 0.65m Direct Attach Copper Cable (JD095C)	NO	R6525

Switch or module	Transceiver module (Product code)	Minimum software release	
		DDM support	Release version
SFP+ 1 Exp 2 PS Slot Switch (R8M25A)	HPE X240 10G SFP+ SFP+ 1.2m Direct Attach Copper Cable (JD096C)	NO	R6525
	HPE X240 10G SFP+ SFP+ 3m Direct Attach Copper Cable (JD097C)	NO	R6525
	HPE X240 SFP+ SFP+ 5m Direct Attach Copper Cable (JG081C)	NO	R6525
	HPE X130 10G SFP+ LC ER 40km Xcvr (JG234A)	YES	R6525
	HPE X130 10G SFP+ LC LH 80km Xcvr (JG915A)	YES	R6525
	HPE X130 10G SFP+ LC LH80 tunable Xcvr (JL250A)	YES	R6525
	HPE X2A0 10G SFP+ to SFP+ 7m Active Optical Cable (JL290A)	YES	R6525
	HPE X2A0 10G SFP+ to SFP+ 10m Active Optical Cable (JL291A)	YES	R6525
	HPE X2A0 10G SFP+ to SFP+ 20m Active Optical Cable (JL292A)	YES	R6525
	HPE X130 10G SFP+ LC BiDi 10km-Uplink Transceiver (JL737A)	YES	R6525
	HPE X130 10G SFP+ LC BiDi 10km-Downlink Transceiver (JL738A)	YES	R6525
	HPE X130 10G SFP+ LC BiDi 40km-Uplink Transceiver (JL739A)	YES	R6525
	HPE X130 10G SFP+ LC BiDi 40km-Downlink Transceiver (JL740A)	YES	R6525
HPE FlexNetwork 5520HI 48G 10/100/1000BASE-T 4 10G/1G BASE-X SFP+ 1 Exp 2 Fan Trays 2 PS Slot Switch (R8M26A)	HPE X130 10G SFP+ LC SR Xcvr (JD092B)	YES	R6525
	HPE X130 10G SFP+ LC LR Xcvr (JD094B)	YES	R6525
	HPE X240 10G SFP+ SFP+ 0.65m Direct Attach Copper Cable (JD095C)	NO	R6525
	HPE X240 10G SFP+ SFP+ 1.2m Direct Attach Copper Cable (JD096C)	NO	R6525
	HPE X240 10G SFP+ SFP+ 3m Direct Attach Copper Cable (JD097C)	NO	R6525
	HPE X240 SFP+ SFP+ 5m Direct Attach Copper Cable (JG081C)	NO	R6525
	HPE X130 10G SFP+ LC ER 40km Xcvr (JG234A)	YES	R6525
	HPE X130 10G SFP+ LC LH 80km Xcvr (JG915A)	YES	R6525
	HPE X130 10G SFP+ LC LH80 tunable Xcvr (JL250A)	YES	R6525
	HPE X2A0 10G SFP+ to SFP+ 7m Active Optical Cable (JL290A)	YES	R6525
	HPE X2A0 10G SFP+ to SFP+ 10m Active Optical Cable (JL291A)	YES	R6525
	HPE X2A0 10G SFP+ to SFP+ 20m Active Optical Cable	YES	R6525

Switch or module	Transceiver module (Product code)	Minimum software release	
		DDM support	Release version
	(JL292A)		
	HPE X130 10G SFP+ LC BiDi 10km-Uplink Transceiver (JL737A)	YES	R6525
	HPE X130 10G SFP+ LC BiDi 10km-Downlink Transceiver (JL738A)	YES	R6525
	HPE X130 10G SFP+ LC BiDi 40km-Uplink Transceiver (JL739A)	YES	R6525
	HPE X130 10G SFP+ LC BiDi 40km-Downlink Transceiver (JL740A)	YES	R6525
HPE FlexNetwork 5520HI 24 SFP 4 10G/1G BASE-X SFP+ 1 Exp slot 2 Fan Tray 2 PS Switch (R8M27A)	HPE X130 10G SFP+ LC SR Xcvr (JD092B)	YES	R6525
	HPE X130 10G SFP+ LC LR Xcvr (JD094B)	YES	R6525
	HPE X240 10G SFP+ SFP+ 0.65m Direct Attach Copper Cable (JD095C)	NO	R6525
	HPE X240 10G SFP+ SFP+ 1.2m Direct Attach Copper Cable (JD096C)	NO	R6525
	HPE X240 10G SFP+ SFP+ 3m Direct Attach Copper Cable (JD097C)	NO	R6525
	HPE X240 SFP+ SFP+ 5m Direct Attach Copper Cable (JG081C)	NO	R6525
	HPE X130 10G SFP+ LC ER 40km Xcvr (JG234A)	YES	R6525
	HPE X130 10G SFP+ LC LH 80km Xcvr (JG915A)	YES	R6525
	HPE X130 10G SFP+ LC LH80 tunable Xcvr (JL250A)	YES	R6525
	HPE X2A0 10G SFP+ to SFP+ 7m Active Optical Cable (JL290A)	YES	R6525
	HPE X2A0 10G SFP+ to SFP+ 10m Active Optical Cable (JL291A)	YES	R6525
	HPE X2A0 10G SFP+ to SFP+ 20m Active Optical Cable (JL292A)	YES	R6525
	HPE X130 10G SFP+ LC BiDi 10km-Uplink Transceiver (JL737A)	YES	R6525
	HPE X130 10G SFP+ LC BiDi 10km-Downlink Transceiver (JL738A)	YES	R6525
	HPE X130 10G SFP+ LC BiDi 40km-Uplink Transceiver (JL739A)	YES	R6525
	HPE X130 10G SFP+ LC BiDi 40km-Downlink Transceiver (JL740A)	YES	R6525
HPE FlexNetwork 5520HI 24 10/100/1000BASE-T 4 10G/1G BASE-X SFP+ 1 Exp 2 Fan Tray 2 PS Switch (R8M28A)	HPE X130 10G SFP+ LC SR Xcvr (JD092B)	YES	R6525
	HPE X130 10G SFP+ LC LR Xcvr (JD094B)	YES	R6525
	HPE X240 10G SFP+ SFP+ 0.65m Direct Attach Copper Cable (JD095C)	NO	R6525
	HPE X240 10G SFP+ SFP+ 1.2m Direct Attach Copper Cable (JD096C)	NO	R6525

Switch or module	Transceiver module (Product code)	Minimum software release		
		DDM support	Release version	
	HPE X240 10G SFP+ SFP+ 3m Direct Attach Copper Cable (JD097C)	NO	R6525	
	HPE X240 SFP+ SFP+ 5m Direct Attach Copper Cable (JG081C)	NO	R6525	
	HPE X130 10G SFP+ LC ER 40km Xcvr (JG234A)	YES	R6525	
	HPE X130 10G SFP+ LC LH 80km Xcvr (JG915A)	YES	R6525	
	HPE X130 10G SFP+ LC LH80 tunable Xcvr (JL250A)	YES	R6525	
	HPE X2A0 10G SFP+ to SFP+ 7m Active Optical Cable (JL290A)	YES	R6525	
	HPE X2A0 10G SFP+ to SFP+ 10m Active Optical Cable (JL291A)	YES	R6525	
	HPE X2A0 10G SFP+ to SFP+ 20m Active Optical Cable (JL292A)	YES	R6525	
	HPE X130 10G SFP+ LC BiDi 10km-Uplink Transceiver (JL737A)	YES	R6525	
	HPE X130 10G SFP+ LC BiDi 10km-Downlink Transceiver (JL738A)	YES	R6525	
	HPE X130 10G SFP+ LC BiDi 40km-Uplink Transceiver (JL739A)	YES	R6525	
	HPE X130 10G SFP+ LC BiDi 40km-Downlink Transceiver (JL740A)	YES	R6525	
	HPE FlexNetwork 5520HI 48 10/100/1000BASE-T 4 10G/1G BASE-X SFP+ 1 Exp 2 Fan Tray 2 PS Switch (R8M29A)	HPE X130 10G SFP+ LC SR Xcvr (JD092B)	YES	R6525
		HPE X130 10G SFP+ LC LR Xcvr (JD094B)	YES	R6525
HPE X240 10G SFP+ SFP+ 0.65m Direct Attach Copper Cable (JD095C)		NO	R6525	
HPE X240 10G SFP+ SFP+ 1.2m Direct Attach Copper Cable (JD096C)		NO	R6525	
HPE X240 10G SFP+ SFP+ 3m Direct Attach Copper Cable (JD097C)		NO	R6525	
HPE X240 SFP+ SFP+ 5m Direct Attach Copper Cable (JG081C)		NO	R6525	
HPE X130 10G SFP+ LC ER 40km Xcvr (JG234A)		YES	R6525	
HPE X130 10G SFP+ LC LH 80km Xcvr (JG915A)		YES	R6525	
HPE X130 10G SFP+ LC LH80 tunable Xcvr (JL250A)		YES	R6525	
HPE X2A0 10G SFP+ to SFP+ 7m Active Optical Cable (JL290A)		YES	R6525	
HPE X2A0 10G SFP+ to SFP+ 10m Active Optical Cable (JL291A)		YES	R6525	
HPE X2A0 10G SFP+ to SFP+ 20m Active Optical Cable (JL292A)		YES	R6525	
HPE X130 10G SFP+ LC BiDi 10km-Uplink Transceiver		YES	R6525	

Switch or module	Transceiver module (Product code)	Minimum software release	
		DDM support	Release version
	(JL737A)		
	HPE X130 10G SFP+ LC BiDi 10km-Downlink Transceiver (JL738A)	YES	R6525
	HPE X130 10G SFP+ LC BiDi 40km-Uplink Transceiver (JL739A)	YES	R6525
	HPE X130 10G SFP+ LC BiDi 40km-Downlink Transceiver (JL740A)	YES	R6525

HPE FlexNetwork 5140 EI switch series minimum software version requirements

Switch or module	Transceiver module (Product code)	Minimum software release	
		DDM support	Release version
HPE FlexNetwork 5140 24G 4SFP+ EI Switch (JL828A)	HPE X130 10G SFP+ LC SR Xcvr (JD092B)	YES	R6525
	HPE X130 10G SFP+ LC LR Xcvr (JD094B)	YES	R6525
	HPE X240 10G SFP+ SFP+ 0.65m Direct Attach Copper Cable (JD095C)	NO	R6525
	HPE X240 10G SFP+ SFP+ 1.2m Direct Attach Copper Cable (JD096C)	NO	R6525
	HPE X240 10G SFP+ SFP+ 3m Direct Attach Copper Cable (JD097C)	NO	R6525
	HPE X240 SFP+ SFP+ 5m Direct Attach Copper Cable (JG081C)	NO	R6525
	HPE X130 10G SFP+ LC ER 40km Xcvr (JG234A)	YES	R6525
	HPE X130 10G SFP+ LC LH 80km Xcvr (JG915A)	YES	R6525
	HPE X130 10G SFP+ LC LH80 tunable Xcvr (JL250A)	YES	R6525
	HPE X2A0 10G SFP+ to SFP+ 7m Active Optical Cable (JL290A)	YES	R6525
	HPE X2A0 10G SFP+ to SFP+ 10m Active Optical Cable (JL291A)	YES	R6525
	HPE X2A0 10G SFP+ to SFP+ 20m Active Optical Cable (JL292A)	YES	R6525
	HPE X130 10G SFP+ LC BiDi 10km-Uplink Transceiver (JL737A)	YES	R6525
	HPE X130 10G SFP+ LC BiDi 10km-Downlink Transceiver (JL738A)	YES	R6525
	HPE X130 10G SFP+ LC BiDi 40km-Uplink Transceiver (JL739A)	YES	R6525
	HPE X130 10G SFP+ LC BiDi 40km-Downlink	YES	R6525

Switch or module	Transceiver module (Product code)	Minimum software release	
		DDM support	Release version
	Transceiver (JL740A)		
HPE FlexNetwork 5140 24G SFP w/8G Combo 4SFP+ EI Switch (JL826A)	HPE X130 10G SFP+ LC SR Xcvr (JD092B)	YES	R6525
	HPE X130 10G SFP+ LC LR Xcvr (JD094B)	YES	R6525
	HPE X240 10G SFP+ SFP+ 0.65m Direct Attach Copper Cable (JD095C)	NO	R6525
	HPE X240 10G SFP+ SFP+ 1.2m Direct Attach Copper Cable (JD096C)	NO	R6525
	HPE X240 10G SFP+ SFP+ 3m Direct Attach Copper Cable (JD097C)	NO	R6525
	HPE X240 SFP+ SFP+ 5m Direct Attach Copper Cable (JG081C)	NO	R6525
	HPE X130 10G SFP+ LC ER 40km Xcvr (JG234A)	YES	R6525
	HPE X130 10G SFP+ LC LH 80km Xcvr (JG915A)	YES	R6525
	HPE X130 10G SFP+ LC LH80 tunable Xcvr (JL250A)	YES	R6525
	HPE X2A0 10G SFP+ to SFP+ 7m Active Optical Cable (JL290A)	YES	R6525
	HPE X2A0 10G SFP+ to SFP+ 10m Active Optical Cable (JL291A)	YES	R6525
	HPE X2A0 10G SFP+ to SFP+ 20m Active Optical Cable (JL292A)	YES	R6525
	HPE X130 10G SFP+ LC BiDi 10km-Uplink Transceiver (JL737A)	YES	R6525
	HPE X130 10G SFP+ LC BiDi 10km-Downlink Transceiver (JL738A)	YES	R6525
	HPE X130 10G SFP+ LC BiDi 40km-Uplink Transceiver (JL739A)	YES	R6525
HPE X130 10G SFP+ LC BiDi 40km-Downlink Transceiver (JL740A)	YES	R6525	
HPE FlexNetwork 5140 48G 4SFP+ EI Switch (JL829A)	HPE X130 10G SFP+ LC SR Xcvr (JD092B)	YES	R6525
	HPE X130 10G SFP+ LC LR Xcvr (JD094B)	YES	R6525
	HPE X240 10G SFP+ SFP+ 0.65m Direct Attach Copper Cable (JD095C)	NO	R6525
	HPE X240 10G SFP+ SFP+ 1.2m Direct Attach Copper Cable (JD096C)	NO	R6525
	HPE X240 10G SFP+ SFP+ 3m Direct Attach Copper Cable (JD097C)	NO	R6525
	HPE X240 SFP+ SFP+ 5m Direct Attach Copper Cable (JG081C)	NO	R6525
	HPE X130 10G SFP+ LC ER 40km Xcvr (JG234A)	YES	R6525
	HPE X130 10G SFP+ LC LH 80km Xcvr (JG915A)	YES	R6525
	HPE X130 10G SFP+ LC LH80 tunable Xcvr (JL250A)	YES	R6525

Switch or module	Transceiver module (Product code)	Minimum software release		
		DDM support	Release version	
	HPE X2A0 10G SFP+ to SFP+ 7m Active Optical Cable (JL290A)	YES	R6525	
	HPE X2A0 10G SFP+ to SFP+ 10m Active Optical Cable (JL291A)	YES	R6525	
	HPE X2A0 10G SFP+ to SFP+ 20m Active Optical Cable (JL292A)	YES	R6525	
	HPE X130 10G SFP+ LC BiDi 10km-Uplink Transceiver (JL737A)	YES	R6525	
	HPE X130 10G SFP+ LC BiDi 10km-Downlink Transceiver (JL738A)	YES	R6525	
	HPE X130 10G SFP+ LC BiDi 40km-Uplink Transceiver (JL739A)	YES	R6525	
	HPE X130 10G SFP+ LC BiDi 40km-Downlink Transceiver (JL740A)	YES	R6525	
	HPE FlexNetwork 5140 24G PoE+ 4SFP+ EI Switch (JL827A)	HPE X130 10G SFP+ LC SR Xcvr (JD092B)	YES	R6525
HPE X130 10G SFP+ LC LR Xcvr (JD094B)		YES	R6525	
HPE X240 10G SFP+ SFP+ 0.65m Direct Attach Copper Cable (JD095C)		NO	R6525	
HPE X240 10G SFP+ SFP+ 1.2m Direct Attach Copper Cable (JD096C)		NO	R6525	
HPE X240 10G SFP+ SFP+ 3m Direct Attach Copper Cable (JD097C)		NO	R6525	
HPE X240 SFP+ SFP+ 5m Direct Attach Copper Cable (JG081C)		NO	R6525	
HPE X130 10G SFP+ LC ER 40km Xcvr (JG234A)		YES	R6525	
HPE X130 10G SFP+ LC LH 80km Xcvr (JG915A)		YES	R6525	
HPE X130 10G SFP+ LC LH80 tunable Xcvr (JL250A)		YES	R6525	
HPE X2A0 10G SFP+ to SFP+ 7m Active Optical Cable (JL290A)		YES	R6525	
HPE X2A0 10G SFP+ to SFP+ 10m Active Optical Cable (JL291A)		YES	R6525	
HPE X2A0 10G SFP+ to SFP+ 20m Active Optical Cable (JL292A)		YES	R6525	
HPE X130 10G SFP+ LC BiDi 10km-Uplink Transceiver (JL737A)		YES	R6525	
HPE X130 10G SFP+ LC BiDi 10km-Downlink Transceiver (JL738A)		YES	R6525	
HPE X130 10G SFP+ LC BiDi 40km-Uplink Transceiver (JL739A)		YES	R6525	
HPE X130 10G SFP+ LC BiDi 40km-Downlink Transceiver (JL740A)		YES	R6525	
HPE FlexNetwork		HPE X130 10G SFP+ LC SR Xcvr (JD092B)	YES	R6525

Switch or module	Transceiver module (Product code)	Minimum software release	
		DDM support	Release version
5140 48G PoE+ 4SFP+ EI Switch (JL824A)	HPE X130 10G SFP+ LC LR Xcvr (JD094B)	YES	R6525
	HPE X240 10G SFP+ SFP+ 0.65m Direct Attach Copper Cable (JD095C)	NO	R6525
	HPE X240 10G SFP+ SFP+ 1.2m Direct Attach Copper Cable (JD096C)	NO	R6525
	HPE X240 10G SFP+ SFP+ 3m Direct Attach Copper Cable (JD097C)	NO	R6525
	HPE X240 SFP+ SFP+ 5m Direct Attach Copper Cable (JG081C)	NO	R6525
	HPE X130 10G SFP+ LC ER 40km Xcvr (JG234A)	YES	R6525
	HPE X130 10G SFP+ LC LH 80km Xcvr (JG915A)	YES	R6525
	HPE X130 10G SFP+ LC LH80 tunable Xcvr (JL250A)	YES	R6525
	HPE X2A0 10G SFP+ to SFP+ 7m Active Optical Cable (JL290A)	YES	R6525
	HPE X2A0 10G SFP+ to SFP+ 10m Active Optical Cable (JL291A)	YES	R6525
	HPE X2A0 10G SFP+ to SFP+ 20m Active Optical Cable (JL292A)	YES	R6525
	HPE X130 10G SFP+ LC BiDi 10km-Uplink Transceiver (JL737A)	YES	R6525
	HPE X130 10G SFP+ LC BiDi 10km-Downlink Transceiver (JL738A)	YES	R6525
	HPE X130 10G SFP+ LC BiDi 40km-Uplink Transceiver (JL739A)	YES	R6525
	HPE X130 10G SFP+ LC BiDi 40km-Downlink Transceiver (JL740A)	YES	R6525
	HPE FlexNetwork 5140 24G PoE+ 2SFP+ 2XGT EI Switch (JL823A)	HPE X130 10G SFP+ LC SR Xcvr (JD092B)	YES
HPE X130 10G SFP+ LC LR Xcvr (JD094B)		YES	R6525
HPE X240 10G SFP+ SFP+ 0.65m Direct Attach Copper Cable (JD095C)		NO	R6525
HPE X240 10G SFP+ SFP+ 1.2m Direct Attach Copper Cable (JD096C)		NO	R6525
HPE X240 10G SFP+ SFP+ 3m Direct Attach Copper Cable (JD097C)		NO	R6525
HPE X240 SFP+ SFP+ 5m Direct Attach Copper Cable (JG081C)		NO	R6525
HPE X130 10G SFP+ LC ER 40km Xcvr (JG234A)		YES	R6525
HPE X130 10G SFP+ LC LH 80km Xcvr (JG915A)		YES	R6525
HPE X130 10G SFP+ LC LH80 tunable Xcvr (JL250A)		YES	R6525
HPE X2A0 10G SFP+ to SFP+ 7m Active Optical Cable (JL290A)	YES	R6525	

Switch or module	Transceiver module (Product code)	Minimum software release	
		DDM support	Release version
	HPE X2A0 10G SFP+ to SFP+ 10m Active Optical Cable (JL291A)	YES	R6525
	HPE X2A0 10G SFP+ to SFP+ 20m Active Optical Cable (JL292A)	YES	R6525
	HPE X130 10G SFP+ LC BiDi 10km-Uplink Transceiver (JL737A)	YES	R6525
	HPE X130 10G SFP+ LC BiDi 10km-Downlink Transceiver (JL738A)	YES	R6525
	HPE X130 10G SFP+ LC BiDi 40km-Uplink Transceiver (JL739A)	YES	R6525
	HPE X130 10G SFP+ LC BiDi 40km-Downlink Transceiver (JL740A)	YES	R6525
	HPE FlexNetwork 5140 24G PoE+ 2SFP+ 2XGT EI Switch (JL823A)	HPE X130 10G SFP+ LC SR Xcvr (JD092B)	YES
HPE X130 10G SFP+ LC LR Xcvr (JD094B)		YES	R6525
HPE X240 10G SFP+ SFP+ 0.65m Direct Attach Copper Cable (JD095C)		NO	R6525
HPE X240 10G SFP+ SFP+ 1.2m Direct Attach Copper Cable (JD096C)		NO	R6525
HPE X240 10G SFP+ SFP+ 3m Direct Attach Copper Cable (JD097C)		NO	R6525
HPE X240 SFP+ SFP+ 5m Direct Attach Copper Cable (JG081C)		NO	R6525
HPE X130 10G SFP+ LC ER 40km Xcvr (JG234A)		YES	R6525
HPE X130 10G SFP+ LC LH 80km Xcvr (JG915A)		YES	R6525
HPE X130 10G SFP+ LC LH80 tunable Xcvr (JL250A)		YES	R6525
HPE X2A0 10G SFP+ to SFP+ 7m Active Optical Cable (JL290A)		YES	R6525
HPE X2A0 10G SFP+ to SFP+ 10m Active Optical Cable (JL291A)		YES	R6525
HPE X2A0 10G SFP+ to SFP+ 20m Active Optical Cable (JL292A)		YES	R6525
HPE X130 10G SFP+ LC BiDi 10km-Uplink Transceiver (JL737A)		YES	R6525
HPE X130 10G SFP+ LC BiDi 10km-Downlink Transceiver (JL738A)		YES	R6525
HPE X130 10G SFP+ LC BiDi 40km-Uplink Transceiver (JL739A)		YES	R6525
HPE X130 10G SFP+ LC BiDi 40km-Downlink Transceiver (JL740A)		YES	R6525

HPE FlexNetwork 5130 XI switch series minimum software version requirements

Switch or module	Transceiver module (Product code)	Minimum software release	
		DDM support	Release version
HPE 5130 48G 4SFP+ XI Switch (JM051A)	HPE X130 10G SFP+ LC SR Xcvr (JD092B)	YES	R6511
	HPE X130 10G SFP+ LC LR Xcvr (JD094B)	YES	R6511
	HPE X240 10G SFP+ SFP+ 0.65m Direct Attach Copper Cable (JD095C)	NO	R6511
	HPE X240 10G SFP+ SFP+ 1.2m Direct Attach Copper Cable (JD096C)	NO	R6511
	HPE X240 10G SFP+ SFP+ 3m Direct Attach Copper Cable (JD097C)	NO	R6511
	HPE X240 SFP+ SFP+ 5m Direct Attach Copper Cable (JG081C)	NO	R6511
	HPE X130 10G SFP+ LC ER 40km Xcvr (JG234A)	YES	R6511
	HPE X130 10G SFP+ LC LH 80km Xcvr (JG915A)	YES	R6511
	HPE X130 10G SFP+ LC LH80 tunable Xcvr (JL250A)	YES	R6511
	HPE X2A0 10G SFP+ to SFP+ 7m Active Optical Cable (JL290A)	YES	R6511
	HPE X2A0 10G SFP+ to SFP+ 10m Active Optical Cable (JL291A)	YES	R6511
	HPE X2A0 10G SFP+ to SFP+ 20m Active Optical Cable (JL292A)	YES	R6511
	HPE X130 10G SFP+ LC BiDi 10km-Uplink Transceiver (JL737A)	YES	R6511
	HPE X130 10G SFP+ LC BiDi 10km-Downlink Transceiver (JL738A)	YES	R6511
	HPE X130 10G SFP+ LC BiDi 40km-Uplink Transceiver (JL739A)	YES	R6511
HPE X130 10G SFP+ LC BiDi 40km-Downlink Transceiver (JL740A)	YES	R6511	
HPE 5130 48G PoE+ 4SFP+ XI Switch (JM052A)	HPE X130 10G SFP+ LC SR Xcvr (JD092B)	YES	R6511
	HPE X130 10G SFP+ LC LR Xcvr (JD094B)	YES	R6511
	HPE X240 10G SFP+ SFP+ 0.65m Direct Attach Copper Cable (JD095C)	NO	R6511
	HPE X240 10G SFP+ SFP+ 1.2m Direct Attach Copper Cable (JD096C)	NO	R6511
	HPE X240 10G SFP+ SFP+ 3m Direct Attach Copper Cable (JD097C)	NO	R6511
	HPE X240 SFP+ SFP+ 5m Direct Attach Copper Cable (JG081C)	NO	R6511
	HPE X130 10G SFP+ LC ER 40km Xcvr (JG234A)	YES	R6511

Switch or module	Transceiver module (Product code)	Minimum software release	
		DDM support	Release version
	HPE X130 10G SFP+ LC LH 80km Xcvr (JG915A)	YES	R6511
	HPE X130 10G SFP+ LC LH80 tunable Xcvr (JL250A)	YES	R6511
	HPE X2A0 10G SFP+ to SFP+ 7m Active Optical Cable (JL290A)	YES	R6511
	HPE X2A0 10G SFP+ to SFP+ 10m Active Optical Cable (JL291A)	YES	R6511
	HPE X2A0 10G SFP+ to SFP+ 20m Active Optical Cable (JL292A)	YES	R6511
	HPE X130 10G SFP+ LC BiDi 10km-Uplink Transceiver (JL737A)	YES	R6511
	HPE X130 10G SFP+ LC BiDi 10km-Downlink Transceiver (JL738A)	YES	R6511
	HPE X130 10G SFP+ LC BiDi 40km-Uplink Transceiver (JL739A)	YES	R6511
	HPE X130 10G SFP+ LC BiDi 40km-Downlink Transceiver (JL740A)	YES	R6511

Document conventions and icons

Conventions

This section describes the conventions used in the documentation.





Command conventions

Convention	Description
Boldface	Bold text represents commands and keywords that you enter literally as shown.
<i>Italic</i>	<i>Italic</i> text represents arguments that you replace with actual values.
[]	Square brackets enclose syntax choices (keywords or arguments) that are optional.
{ x y ... }	Braces enclose a set of required syntax choices separated by vertical bars, from which you select one.
[x y ...]	Square brackets enclose a set of optional syntax choices separated by vertical bars, from which you select one or none.
{ x y ... } *	Asterisk marked braces enclose a set of required syntax choices separated by vertical bars, from which you select at least one.
[x y ...] *	Asterisk marked square brackets enclose optional syntax choices separated by vertical bars, from which you select one choice, multiple choices, or none.
&<1-n>	The argument or keyword and argument combination before the ampersand (&) sign can be entered 1 to n times.
#	A line that starts with a pound (#) sign is comments.













GUI conventions

Convention	Description
Boldface	Window names, button names, field names, and menu items are in Boldface. For example, the New User window opens; click OK .
>	Multi-level menus are separated by angle brackets. For example, File > Create > Folder .

Symbols

Convention	Description
 WARNING!	An alert that calls attention to important information that if not understood or followed can result in personal injury.
 CAUTION:	An alert that calls attention to important information that if not understood or followed can result in data loss, data corruption, or damage to hardware or software.
 IMPORTANT:	An alert that calls attention to essential information.
NOTE:	An alert that contains additional or supplementary information.
 TIP:	An alert that provides helpful information.

Network topology icons

Convention	Description
	Represents a generic network device, such as a router, switch, or firewall.
	Represents a routing-capable device, such as a router or Layer 3 switch.
	Represents a generic switch, such as a Layer 2 or Layer 3 switch, or a router that supports Layer 2 forwarding and other Layer 2 features.
	Represents an access controller, a unified wired-WLAN module, or the access controller engine on a unified wired-WLAN switch.
	Represents an access point.
	Represents a wireless terminator unit.
	Represents a wireless terminator.
	Represents a mesh access point.
	Represents omnidirectional signals.
	Represents directional signals.
	Represents a security product, such as a firewall, UTM, multiservice security gateway, or load balancing device.
	Represents a security module, such as a firewall, load balancing, NetStream, SSL VPN, IPS, or ACG module.

Examples provided in this document

Examples in this document might use devices that differ from your device in hardware model, configuration, or software version. It is normal that the port numbers, sample output, screenshots, and other information in the examples differ from what you have on your device.

Support and other resources

Accessing Hewlett Packard Enterprise Support

- For live assistance, go to the Contact Hewlett Packard Enterprise Worldwide website:
<http://www.hpe.com/assistance>
- To access documentation and support services, go to the Hewlett Packard Enterprise Support Center website:
<http://www.hpe.com/support/hpesc>

Information to collect

- Technical support registration number (if applicable)
- Product name, model or version, and serial number
- Operating system name and version
- Firmware version
- Error messages
- Product-specific reports and logs
- Add-on products or components
- Third-party products or components

Accessing updates

- Some software products provide a mechanism for accessing software updates through the product interface. Review your product documentation to identify the recommended software update method.
- To download product updates, go to either of the following:
 - Hewlett Packard Enterprise Support Center **Get connected with updates** page:
<http://www.hpe.com/support/e-updates>
 - Software Depot website:
<http://www.hpe.com/support/softwaredepot>
- To view and update your entitlements, and to link your contracts, Care Packs, and warranties with your profile, go to the Hewlett Packard Enterprise Support Center **More Information on Access to Support Materials** page:
<http://www.hpe.com/support/AccessToSupportMaterials>

ⓘ **IMPORTANT:**

Access to some updates might require product entitlement when accessed through the Hewlett Packard Enterprise Support Center. You must have an HP Passport set up with relevant entitlements.

Websites

Website	Link
Networking websites	
Hewlett Packard Enterprise Information Library for Networking	http://www.hpe.com/networking/resourcefinder
Hewlett Packard Enterprise Networking website	http://www.hpe.com/info/networking
Hewlett Packard Enterprise My Networking website	http://www.hpe.com/networking/support
Hewlett Packard Enterprise My Networking Portal	http://www.hpe.com/networking/mynetworking
Hewlett Packard Enterprise Networking Warranty	http://www.hpe.com/networking/warranty
General websites	
Hewlett Packard Enterprise Information Library	http://www.hpe.com/info/enterprise/docs
Hewlett Packard Enterprise Support Center	http://www.hpe.com/support/hpesc
Hewlett Packard Enterprise Support Services Central	http://ssc.hpe.com/portal/site/ssc/
Contact Hewlett Packard Enterprise Worldwide	http://www.hpe.com/assistance
Subscription Service/Support Alerts	http://www.hpe.com/support/e-updates
Software Depot	http://www.hpe.com/support/softwaredepot
Customer Self Repair (not applicable to all devices)	http://www.hpe.com/support/selfrepair
Insight Remote Support (not applicable to all devices)	http://www.hpe.com/info/insightremotesupport/docs

Customer self repair

Hewlett Packard Enterprise customer self repair (CSR) programs allow you to repair your product. If a CSR part needs to be replaced, it will be shipped directly to you so that you can install it at your convenience. Some parts do not qualify for CSR. Your Hewlett Packard Enterprise authorized service provider will determine whether a repair can be accomplished by CSR.

For more information about CSR, contact your local service provider or go to the CSR website:

<http://www.hpe.com/support/selfrepair>

Remote support

Remote support is available with supported devices as part of your warranty, Care Pack Service, or contractual support agreement. It provides intelligent event diagnosis, and automatic, secure submission of hardware event notifications to Hewlett Packard Enterprise, which will initiate a fast and accurate resolution based on your product's service level. Hewlett Packard Enterprise strongly recommends that you register your device for remote support.

For more information and device support details, go to the following website:

<http://www.hpe.com/info/insightremotesupport/docs>

Documentation feedback

Hewlett Packard Enterprise is committed to providing documentation that meets your needs. To help us improve the documentation, send any errors, suggestions, or comments to Documentation

Feedback (<mailto:docsfeedback@hpe.com>). When submitting your feedback, include the document title, part number, edition, and publication date located on the front cover of the document. For online help content, include the product name, product version, help edition, and publication date located on the legal notices page.

Index

[A1](#) [C1](#) [L1](#) [M1](#) [N1](#) [S1](#)

A

About optical transceiver modules, [1](#)
Accessing Hewlett Packard Enterprise Support, [68](#)
Accessing updates, [68](#)

C

Conventions, [66](#)

L

List of 10-Gigabit transceiver modules and network cables, [1](#)

M

Models and specifications, [10](#)

Models and specifications, [13](#)

N

Network topology icons, [67](#)

S

SFP+ active optical cables, [9](#)

SFP+ copper cables, [8](#)

SFP+ optical transceiver modules, [5](#)

Switching minimum software release requirements, [15](#)