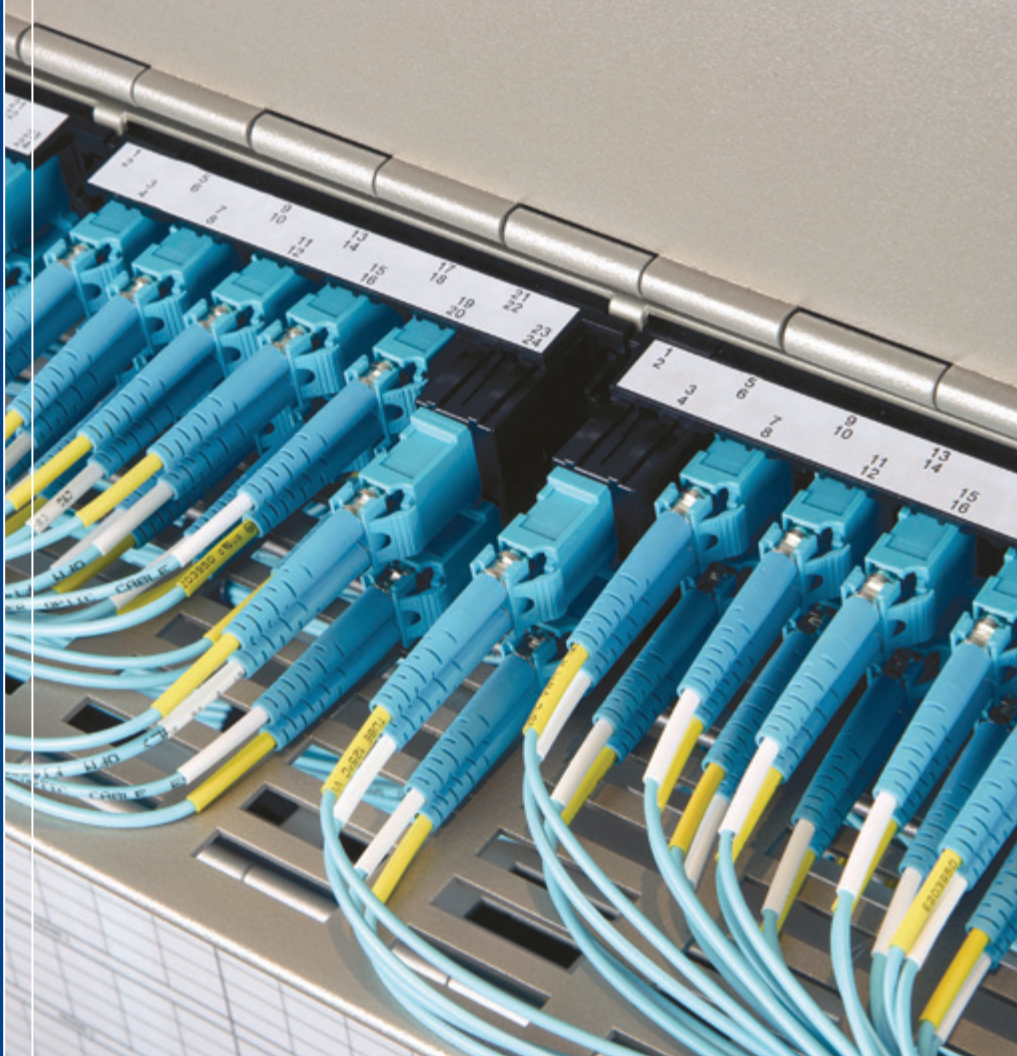
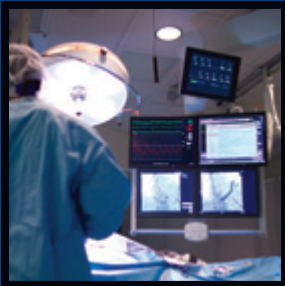




## Belden® Optical Fiber Catalog



Faster.  
Easier.  
Better.

**Belden**  
**FiberExpress®**  
**Systems**

# BELDEN

With the *FiberExpress* Systems, Belden takes a complete approach to fiber optic cabling. Our systems are uniquely positioned to support everything from legacy fiber systems and current backbone and data center fiber links, to future high-speed fiber transmission and long-reach fiber applications.



Faster.  
Easier.  
Better.



## Belden FiberExpress® Systems Reduce Complexity and Increase Flexibility

Involved in the development of optical fiber components for over 40 years, Belden is a leading supplier of high-quality, cost-effective optical fiber cabling systems. The FX Systems are the culmination of Belden's experience and expertise in a variety of applications, including data centers, premise and campus network backbone infrastructures, fiber-to-the-desk (FTTD) applications, and horizontal and centralized cabling systems. Guaranteed to meet or exceed all applicable TIA/EIA, ISO/IEC and IEEE standards, each end-to-end FX System is designed to offer reduced complexity, increased flexibility, and rapid installation.

Table of Contents	Page
<b>Introduction</b>	<b>3-5</b>
<b>FiberExpress Field Termination</b>	<b>6-9</b>
FX Brilliance Universal Connectors .....	6
FX Brilliance Universal Installation Kits and Accessories .....	7
FX Pigtails.....	8-9
<b>FiberExpress Patch Panel Systems</b>	<b>10-19</b>
FX UHD Housing and Shelves.....	10
FX UHD and FX Ultra Cassettes.....	11-12
FX UHD and FX Ultra Frames.....	13
FX UHD and FX Ultra Adapters and Accessories.....	14
FX Ultra Wall Mount and Accessories.....	15
FX Manager Patch Panels and Cassettes.....	16
FX Manager Frames and Accessories.....	17
FX Patch Rack Mount and Wall Mount Patch Panels .....	18
FX Patch Adapter Strips and Accessories.....	19
<b>FiberExpress Pre-Terminated Assemblies</b>	<b>20-27</b>
FX Patch Cords.....	20-21
FX Hydra Assemblies.....	22-23
FX MPO Trunk Assemblies.....	24-25
FX Multi-Fiber Cable Assemblies.....	26-27
<b>FiberExpress Workstation Outlets</b>	<b>28-29</b>
MediaFlex Faceplate Kits, Workstation Outlets, and Window Covers.....	28
MediaFlex Multimedia Inserts and KeyConnect Adapters.....	29
<b>FiberExpress Workstation Connectivity</b>	<b>30-31</b>
FX Multi Box (M-Box) and MDVO Multimedia Outlet Box.....	30
Multi-User Outlet Box, MDVO-Style Fiber Modules, and Duplex Footprint Fiber Adapters.....	31
<b>FiberExpress Secure/Keyed LC System</b>	<b>32</b>
<b>FiberExpress Optical Fiber Cables</b>	<b>33-53</b>
Fiber Cable Reference.....	33
FX Interconnect Cables.....	34
FX Breakout Cables.....	35
FX Distribution Cables.....	36-39
FX Armored Distribution Cables .....	40-43
FX Brilliance Tactical Cables.....	44
Single Jacket, All Dielectric Loose Tube Cables.....	45-47
Double Jacket, Armored Loose Tube Cables.....	48-49
Double Jacket, Heavy Duty Loose Tube Cables.....	50
Central Tube Cables.....	51
TrayOptic® Industrial, Heavy Duty, All Dielectric Cables.....	52-53
<b>Part Number Index</b>	<b>54-58</b>
<b>Customer Service and Other Belden Contacts</b>	<b>Back Cover</b>

## A Complete Approach to Fiber Optic Cabling

Belden FX Systems are available in a variety of performance levels to meet the value and price point for a wide variety of applications. Each system is uniquely color-coded for easy identification in the field.

The following is a recap of the five Belden FX Systems that are offered today:

Belden System	FX OM1	FX OM2	FX OM3	FX OM4	FX SM
<b>Standard</b>	OM1 – 62.5 µm Multimode Non-Bend Insensitive TIA/EIA-568-C.3 ISO 11801	OM2 – 50 µm Multimode Bend Insensitive TIA/EIA-568-C.3 ISO 11801	OM3 – 50 µm Multimode Bend Insensitive TIA/EIA-568-C.3 ISO 11801	OM4 – 50 µm Multimode Bend Insensitive TIA/EIA-568-C.3 ISO 11801	OS2 Singlemode Non-Bend Insensitive ITU G.652D
<b>Ethernet Applications</b>	Legacy 1G up to 275 m	Not Recommended for New Designs	1G up to 550 m 10G up to 300 m 40G/100G up to 100 m	10G up to 400 m 40G/100G up to 150 m	10G up to 30/40 km 40G/100G up to 10/40 km
<b>Fibre Channel Applications</b>	Legacy 1G up to 300 m	Not Recommended for New Designs	4G up to 380 m 8G up to 300 m 16G up to 100 m	16G up to 125 m	4/8/16G up to 10 km
<b>Fiber Cable Assemblies Jacket Color</b>	Orange	Orange	Aqua	Erika Violet Aqua (optional)*	Yellow
<b>Connector &amp; Adapter Color</b>	Beige	Black	Aqua	Erika Violet Aqua (optional)*	Blue Green (APC)
<b>Pre-Term Connector Loss</b>	MPO-12 0.5 dB LC/SC/ST 0.25 dB	MPO-12 0.5 dB LC/SC/ST 0.25 dB	MPO-12 0.35 dB LC/SC/ST 0.25 dB	MPO-12 0.2 dB LC/SC/ST 0.15 dB	MPO-12 0.75 dB LC/SC/ST 0.35 dB
<b>Fiber Loss</b>	Tight Buffer (900 µm) 3.5 dB @ 850 nm 1.2 dB @ 1300 nm Enterprise Loose Tube (250 µm) 3.5 dB @ 850 nm 1.2 dB @ 1300 nm	Tight Buffer (900 µm) 3.5 dB @ 850 nm 1.2 dB @ 1300 nm Enterprise Loose Tube (250 µm) 3.5 dB @ 850 nm 1.2 dB @ 1300 nm	Tight Buffer (900 µm) 3.25 dB @ 850 nm 1.0 dB @ 1300 nm Enterprise Loose Tube (250 µm) 3.25 dB @ 850 nm 1.0 dB @ 1300 nm	Tight Buffer (900 µm) 3.0 dB @ 850 nm 1.0 dB @ 1300 nm Enterprise Loose Tube (250 µm) 3.0 dB @ 850 nm 1.0 dB @ 1300 nm	Tight Buffer (900 µm) 0.5 dB @ 1310 nm 0.5 dB @ 1550 nm Enterprise Loose Tube (250 µm) 0.5 dB @ 1310 nm 0.5 dB @ 1550 nm
<b>Min. OFL Bandwidth (MHz-km)</b>	200 @ 850 nm 500 @ 1300 nm	700 @ 850 nm 500 @ 1300 nm	1500 @ 850 nm 500 @ 1300 nm	3500 @ 850 nm 500 @ 1300 nm	N/A

\* Belden Standard OM4 products use Erika Violet Cable with Erika Violet connectors. Aqua OM4 cable and connectors are available as Tailored products by selecting OM4 fiber with the Aqua color code. Other combinations of fiber type and color will continue to use the default connector colors with the specified cable jacket color.

Faster.  
Easier.  
Better.

Fiber**Express**® Brilliance®

# Universal

FIELD-INSTALLABLE FIBER OPTIC CONNECTORS

> FASTER.

> EASIER.

> BETTER.



## FiberExpress Field Termination

### FX Brilliance Universal Connectors



FX Brilliance Universal Connectors

Brilliant in design and universal in implementation, FX Brilliance Universal no-epoxy, no-polish, no-crimp field-installable connectors make fiber field termination faster, easier and better with our industry-leading design.

#### FASTER

- Faster fiber termination in as few as 5 seconds
- Faster installation proficiency through simple termination technique

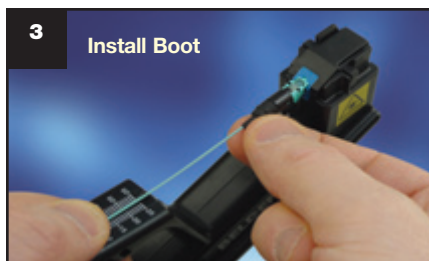
#### EASIER

- Easier with no epoxy or polishing
- Easier no-crimp design
- Easier with duplex clips to hold TX/RX pairs together

#### BETTER

- Better termination yield with integrated VFL feedback
- Better universal cable support for 250  $\mu$ m, 900  $\mu$ m, 2 mm Jacketed, 3 mm Jacketed
- Better universal fiber support for OM1, OM2, OM3, OM4 as well as OS2

### Three Simple Steps



Connector Performance	Maximum Insertion Loss	Typical Insertion Loss	Return Loss
Multimode	0.5 dB	0.2 dB	25 dB
Singlemode UPC	0.5 dB	0.3 dB	50 dB
Singlemode APC	0.5 dB	0.3 dB	60 dB

Description	Belden Part Number			
	Multimode, OM1	Multimode, OM2	Multimode, OM3/ OM4 - Aqua	Multimode, OM4 - Erika Violet
LC with 900 $\mu$ m Boot, 25 per package	AX105200-B25	AX105201-B25	AX105202-B25	AX105252-B25
SC with 900 $\mu$ m Boot, 25 per package	AX105205-B25	AX105206-B25	AX105207-B25	AX105253-B25
ST with 900 $\mu$ m Boot, 25 per package	AX105210-B25	AX105211-B25	AX105212-B25	AX105254-B25

Replace -B25 with -S1 for sample 1 per package.

Description	Belden Part Number			
	Singlemode, OS2		Singlemode, OS2/APC	
	1 per package	25 per package	1 per package	25 per package
LC with 900 $\mu$ m Boot	AX105203-S1	AX105203-B25	-	-
SC with 900 $\mu$ m Boot	AX105208-S1	AX105208-B25	AX105209-S1	AX105209-B25
ST with 900 $\mu$ m Boot	AX105213-S1	AX105213-B25	-	-

FX Brilliance Universal includes a boot for 900  $\mu$ m Tight Buffered fiber. Boots for 2 mm/3 mm Jacketed fiber are sold separately.

Description	Belden Part Number
2 mm Jacketed Boot, 25 per package	AX105214-B25
3 mm Jacketed Boot, 25 per package	AX105215-B25

Description	Belden Part Number
LC Duplex Clip (Black), 25 per package	FXBUCLLDB25N
SC Duplex Clip (Black), 25 per package	FXBUCLSDB25N

Faster.  
Easier.  
Better.



## FiberExpress Field Termination (continued)

### FX Brilliance Universal Installation Kits and Accessories

#### Improve Installer Comfort, Repeatability and Performance

Although termination of the FX Brilliance Universal connector can be done with no specialized tools, installation kits are available with all the tools necessary to prepare the fiber as well as to provide a stable work platform to achieve optimal installation results.

#### FX Brilliance Installation Kit

Description	Belden Part Number
Precision Installation Kit (Basic Kit, Fiber Preparation Tools, Precision Cleaver and Visual Fault Locator)	AX104271



AX104271, Precision Installation Kit

#### FX Brilliance Accessories

Description	Belden Part Number
Precision Cleaver	AX104286
Precision Cleaver Replacement Blade (for FC-7 cleaver)	AX104293
Precision Cleaver Replacement Blade (for FC-7R cleaver)	AX104593
Support Handle with Adapters	AX104276
Support Handle LC Adapter	AX104289
Support Handle SC Adapter	AX104290
Support Handle ST Adapter	AX104291
Visual Fault Locator (VFL-250) with Adapter Cords	AX104283
Visual Fault Locator (VFL-125) LC-LC Adapter Cord	AX203567
Visual Fault Locator (VFL-125/250) LC-SC Adapter Cord (valid for ST also)	AX203568
Visual Fault Locator (VFL-250) SC-SC Adapter Cord (valid for ST also)	AX203569
Visual Fault Locator (VFL-125) LC-SC/APC Adapter Cord & Support Handle SC/APC Adapter	AX203895
Visual Fault Locator (VFL-250) SC-SC/APC Adapter Cord & Support Handle SC/APC Adapter	AX203930
Fiber/Cable Stripper	AX103151
Pen Marker	AX104279
Refurbishing Materials (80 alcohol wipes and a black pen marker)	AX100951
Safety Glasses	AX104282
Scissors	AX104280
Tweezers	AX104278
Waste Bottle	AX104281



AX104286, Precision Cleaver

#### Ensure Durable Rugged Installation on 250 μm Fiber

Field Breakout kits are available to provide a durable 900 μm coating for 250 μm fibers to ensure optimal retention, flex and twist support without sacrificing the outdoor performance of loose-tube cables or the small diameter of mini-distribution cables.

#### FX Breakout Kits

Description	Belden Part Number
Breakout Kit for 2.0 mm Subunits, 6-fiber, 1-Pack	AX101100
Breakout Kit for 3.0 mm Subunits, 12-fiber, 1-Pack	AX101101
Breakout kit for 5.2 mm Subunits (Central Tube), 6-fiber, 1-Pack	AX104695
Breakout kit for 5.2 mm Subunits (Central Tube), 12-fiber, 1-Pack	AX104696



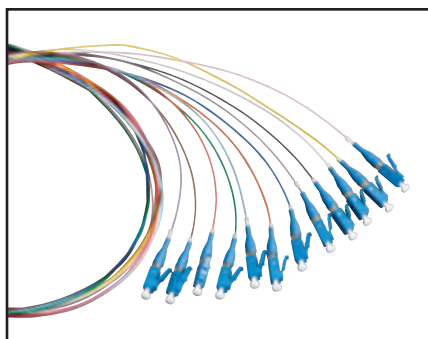
AX104276, Support Handle with Adapters



When used with the VFL, a light can be seen through the clear window on the connector body until a fiber has been properly terminated

## FiberExpress Field Termination (continued)

### FX Pigtails



FTSLC900PR12, FX LC Color-coded Pigtail Kit, Singlemode

Established technology with a pedigree of resilience. Traditional fusion splice-on connectors with pigtailed provide factory-polished performance with field-termination convenience within harsh environments.

#### FASTER

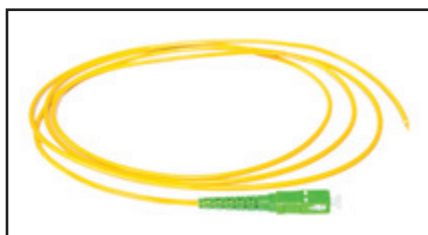
- Faster connector identification with color-coded pigtail kits
- Faster delivery with standard LC, SC or ST 2 meter pigtail kits

#### EASIER

- Easier field-termination with factory pre-terminated connectors
- Easier ordering with intuitive *SmartPart* numbers

#### BETTER

- Better quality with precision factory-polished connectors
- Better insertion loss at 0.25 dB OM3 and 0.15 dB OM4



FTSSB3MMPS01, FX Splice-On Pigtail, Green SC/APC Simplex on 2 m of 3 mm Jacketed Cable using 900 µm OS2 fiber

### Standard Color-coded Pigtail Kits (900 µm)

Description	Belden Part Number				
	OM1	OM3	OM4	OS2	SM/APC
LC	-	FT3LC900PR12	FT4LC900PR12	FTSLC900PR12	FTSLB900PR12
SC	FT1SC900PR12	FT3SC900PR12	FT4SC900PR12	FTSSC900PR12	FTSSB900PR12
ST	FT1ST900PR12	FT3ST900PR12	-	FTSST900PR12	-

Standard Color-coded Pigtail Kits contain 12 color-coded 900 µm fibers, 2 m in length.



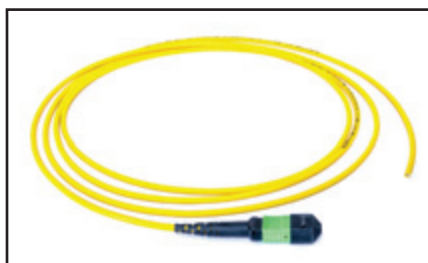
FT4LD2MMPS01, FX Splice-On Pigtail, Erika Violet LC Duplex on 2 m of 2 mm Jacketed Cable using 900 µm OM4 fiber

### Standard Single Pigtails (Jacketed)

Description	Belden Part Number				
	OM1	OM3	OM4	OS2	SM/APC
MPO-12(m)	-	FT3MM3MMPS01	-	-	FTSMM3MMPS01
LC	-	FT3LC2MMPS01	FT4LC2MMPS01	FTSLC2MMPS01	FTSLB2MMPS01
LC Duplex	-	FT3LD2MMPS01	FT4LD2MMPS01	FTSLD2MMPS01	FTSLA2MMPS01
SC	FT1SC3MMPS01	FT3SC3MMPS01	FT4SC3MMPS01	FTSSC3MMPS01	FTSSB3MMPS01
SC Duplex	-	FT3SD3MMPS01	FT4SD3MMPS01	FTSSD3MMPS01	FTSSA3MMPS01
ST Simplex	FT1ST3MMPS01	FT3ST3MMPS01	-	FTSST3MMPS01	-

Standard Single Pigtails contain 1 unit, 2 m in length.

See page 4 for standard fiber color code charts.



FTSMM3MMPS01, FX Splice-On Pigtail, Green MPO-12/APC (male) on 2 m of 3 mm Jacketed Cable using 250 µm OS2 fiber

### Fusion Splice Heat Shrink Protector Sleeves

Description	Belden Part Number
Heat Shrink Splice Protector Sleeves, 900 µm to 900 µm, 2.5 mm round x 60 mm long, 25/package	FXFUHS900AB25
Heat Shrink Splice Protector Sleeves, 900 µm to 250 µm, 2.0 mm round x 40 mm long, 25/package	FXFUHS9T2CB25
Heat Shrink Splice Protector Sleeves, 250 µm to 250 µm, 1.5 mm round x 40 mm long, 25/package	FXFUHS250DB25
Heat Shrink Splice Protector Sleeves, 250 µm 12-fiber Ribbon, oval x 40 mm long, 12/package	FXFUHSRIBEB12



Faster.  
Easier.  
Better.



## FiberExpress Field Termination (continued)

### FX Pigtails

#### Tailored Pigtails

#### Building a SmartPart Number

The fixed letters indicates the series

**FT**

1. Choose Fiber Type

**4**

2. Choose Connectors

**LD**

3. Choose Cable Type

**2MM**

4. Choose Product Family

**P**

5. Choose Packaging

**S01**

6. Choose Length

**3M**

7. Choose Jacket Color

**A**

Fiber Type	
1	OM1
3	OM3
4	OM4
S	OS2

Connectors	
LC	LC Simplex
LB	LC/APC Simplex
LD	LC Duplex
SC	SC Simplex
SB	SC/APC Simplex
SD	SC Duplex
ST	ST
MM	MPO-12 (m)
MF	MPO-12 (f)

Cable Type	
250	250 $\mu$ m Fiber
900	Tight Buffered
2MM	Jacketed
3MM	Jacketed

Product Family	
P	Fusion Pigtail

Packaging	
S01	Single Unit
R06	Rainbow 6 Pk
R12	Rainbow 12 Pk

Length (meters)	
1M	1M
2M	2M
3M	3M
4M	4M
5M	5M
6M	6M
7M	7M
8M	8M
9M	9M

Jacket Color	
O	Orange
Y	Yellow
A	Aqua
E	Erika V.

#### Examples:

**FT4LD2MMPS01** - FX Field-Termination Pigtail, OM4, LC Duplex, Jacketed 2.0 MM, Single-Ended, 2 M, Erika Violet Jacket

**FTSSB900PS01** - FX Field-Termination Pigtail, OS2, SC Simplex/APC, Tight Buffer 900  $\mu$ m, Single-Ended, 2 M, White Buffer

For further options contact Belden for custom Engineered solutions.

## FiberExpress Patch Panel Systems

### FX UHD Housings and Shelves

Elegantly simple yet uncompromisingly flexible. Ultra high-density rack-mount fiber connectivity system, crafted for effortless installation and maintenance.

#### FASTER

- Faster field-termination with high-accessibility sliding and tilting drawers
- Faster pre-term installation with simple fixed shelves and cassettes

#### EASIER

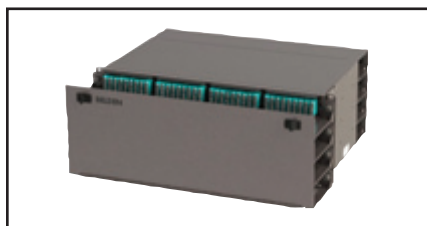
- Easier installation with tool-less removable drawers and lightweight housings
- Easier port identification with clear visible labeling
- Easier to configure with flexible port count LC, SC, ST and MPO modules

#### BETTER

- Better fiber protection with covered patch cord tray
- Better high density offering with 18-port modules for up to 72 LC Duplex ports per 1U
- Better visibility with light colored Titanium finish



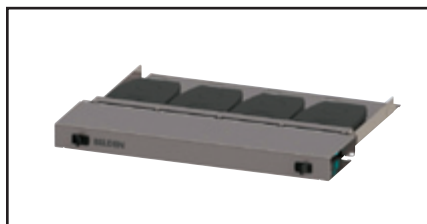
AX104681, FX Ultra HD 1U Patch Panel Housing (shown loaded)



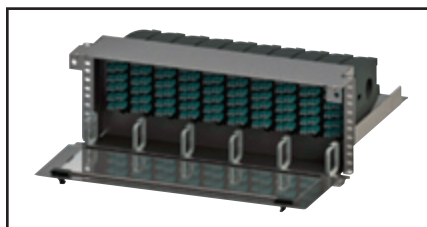
AX104683, FX UHD 4U Patch Panel Housing (shown loaded)



AX104681, FX UHD Patch Panel 1U with mounted Splice Housing Kit (AX104684)



AX105164, FX UHD 1U Patch Panel Standard Shelf (shown loaded)



AX105167, FX UHD 4U Patch Panel Recessed Shelf (shown loaded)

#### FX UHD Housings

Feature-rich housings are fully enclosed to provide protection for exposed 250  $\mu$ m and 900  $\mu$ m fibers coupled with sliding and tilting drawers to speed up and simplify installation and maintenance.

Description	Number of Module Bays	Total LC Duplex/ MPO Ports using FX Ultra Frames and Cassettes	Total LC Duplex/ MPO Ports using FX UHD Frames and Cassettes	Belden Part Number	
				Titanium	Black
1U Housing with Front and Rear Cable Tray	4	48	72	AX104681	AX105563
4U Housing with Front and Rear Cable Tray	16	192	288	AX104683	AX105565
4U 23" Housing with Front and Rear Cable Tray	20	240	360	AX105379	-
Optional 1U Splice Housing Kit, 144 splices (add up to 4 on the 4U Housing) <sup>1</sup>	N/A	N/A	N/A	AX104684	AX105678
Optional Patch Cord Tray Cover, 19in <sup>2</sup>	N/A	N/A	N/A	AX105162	AX105672

1. Up to 4 splice housing kits can be added to 4U housings. Splice housing kits are only compatible with standard 19" rack mount housings.
2. Use with 1U or 4U housings to protect the contents of the topmost patch cord tray. Patch cord tray cover is included with 23" housings.

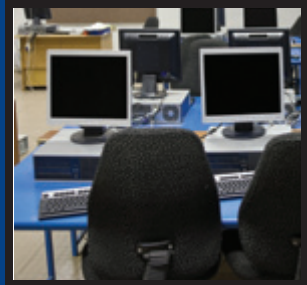
#### FX UHD Shelves

Entry-level cost effective solutions for pre-terminated systems.

Description	Number of Module Bays	Total LC Duplex/ MPO Ports using FX Ultra Frames and Cassettes	Total LC Duplex/ MPO Ports using FX UHD Frames and Cassettes	Belden Part Number	
				Titanium	Black
1U Standard Fixed Shelf	4	48	72	AX105164	AX105673
1U Recessed Fixed Shelf	4	48	72	AX105165	AX105674
4U Standard Fixed Shelf	10	120	180	AX105166	AX105675
4U Recessed Fixed Shelf	10	120	180	AX105167	AX105676

See the FX UHD System Product Bulletin (PB500) for further options

Faster.  
Easier.  
Better.



## FiberExpress Patch Panel Systems (continued)

### FX UHD and FX Ultra Cassettes

#### FX UHD and FX Ultra Cassettes

Featuring the highest density at 72 LC Duplex or MPO ports per 19" rack unit FX UHD family is the ideal choice for high-port count applications such as in the data center.

Unique 1" pull-out feature of the FX Ultra family provides a medium density solution with a superior ease of use for day-to-day MAC (moves, adds and changes) within the Enterprise or cross-connect within the data center.

#### Standard Type-A Cassettes

Description			Belden Part Number				
Patch Ports (fibers)	Trunk Ports	Family	OM1 Beige Adapters	OM3 Aqua Adapters	OM4 Erika Violet Adapters	OS2 Blue Adapters	SM/APC Green Adapters
<b>LC Duplex to MPO-12(f)</b>							
18 (3)	3	FX UHD*	-	FC3H18LDMF	FC4H18LDMF	FCSH18LDMF	FCSH18LAMF
12 (24)	2	FX Ultra	FC1U12LDMF	FC3U12LDMF	FC4U12LDMF	FCSU12LDMF	FCSU12LAMF
<b>LC Duplex w/Shutters to MPO-12(f)</b>							
6 (12)	1	FX Ultra	-	-	-	FCSU06LSMF	FCSU06LQMF
<b>SC Duplex to MPO-12(f)</b>							
6 (12)	1	FX Ultra	FC1U06SDMF	FC3U06SDMF	FC4U06SDMF	FCSU06SDMF	FCSU06SAMF
<b>SC Simplex to MPO-12(f)</b>							
12 (12)	1	FX Ultra	-	-	-	FCSU12SCMF	FCSU12SBMF
<b>SC Simplex w/Shutters to MPO-12(f)</b>							
6 (6)	1	FX Ultra	-	-	-	FCSU06SRMF	FCSU06SPMF

\*Optional HD Patch cord release tool AX104685



FCSH18LDMF, FX UHD Cassette, OS2, 18 ports, MPO-12 (female), LC Duplex, Type-A, Blue adapters



FC3U12LDMF1A, FX Ultra Cassette, OM3, 12 ports, MPO-12 (female), LC Duplex, Type-A ALT, Aqua adapters

#### Standard Type-A-Alternate Cassettes\*

Description			Belden Part Number				
Patch Ports (fibers)	Trunk Ports	Family	OM1 Beige Adapters	OM3 Aqua Adapters	OM4 Erika Violet Adapters	OS2 Blue Adapters	SM/APC Green Adapters
<b>LC Duplex to MPO-12(f)</b>							
18 (3)	3	FX UHD*	-	FC3H18LDMF1A	FC4H18LDMF1E	FCSH18LDMF1B	FCSH18LAMF1G
12 (24)	2	FX Ultra	FC1U12LDMF1K	FC3U12LDMF1A	FC4U12LDMF1E	FCSU12LDMF1B	FCSU12LAMF1G
<b>LC Duplex w/Shutters to MPO-12(f)</b>							
6 (12)	1	FX Ultra	-	-	-	FCSU06LSMF1B	FCSU06LQMF1G

\* In order to maintain proper port numbering within a 10G installation AND chart your path to 40G and beyond, please see the diagram on the following page that outlines when and where to use Type-A-Alternate Cassettes, as well as the process for migrating to 40G.



NEW: FX UHD Angled Cassettes in 12 Port LC Duplex and 6 Port SC Duplex. See Tailored SmartPart numbers for Details.

#### Standard Splicing Cassettes

Description		Belden Part Number				
Patch Ports (fibers)	OM1 Beige Adapters	OM3 Aqua Adapters	OM4 Erika Violet Adapters	SM Blue Adapters	SM/APC Green Adapters	
<b>MPO Type-A (Key-Up/Key-Down)</b>						
12	FC1H12MPFS	FC3H12MPFS	FC4H12MPFS	-	FCSH12MPFS	
<b>LC Duplex</b>						
12 (24)	FC1H12LDFS	FC3H12LDFS	FC4H12LDFS	FCSH12LDFS	FCSH12LAFS	
<b>SC Duplex</b>						
6 (12)	FC1H06SDFS	FC3H06SDFS	FC4H06SDFS	FCSH06SDFS	-	
<b>SC Simplex</b>						
12 (12)	-	-	-	-	FCSH12SBFS	
<b>ST (Metal Adapters)</b>						
12 (12)	FCSH12STFS					

FX Brilliance Universal (page 6) or FX Pigtails (page 8) and Heat Shrink Splice Protector Sleeves (page 8) sold separately.



NEW: FC3H12LDFS, FX UHD Splice Cassette, OM3, 12 ports, LC duplex, Aqua Adapters

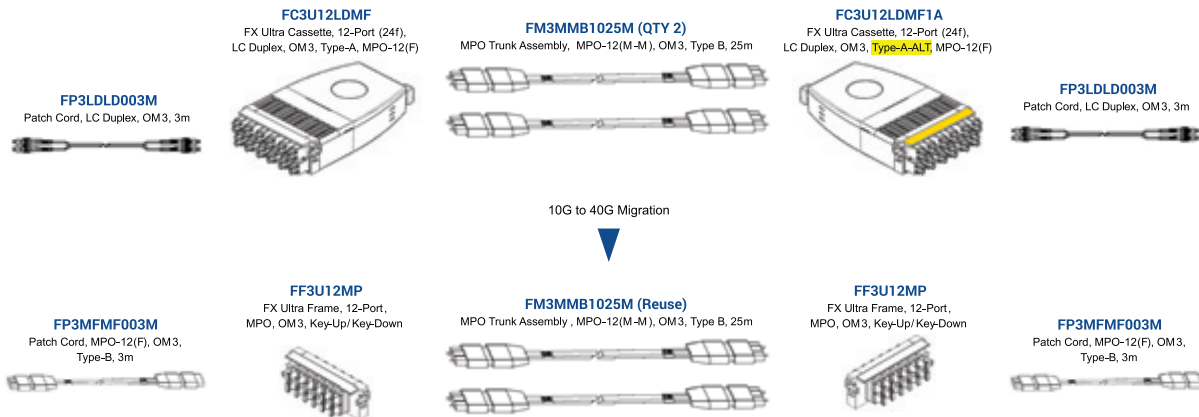
## FiberExpress Patch Panel Systems (continued) FX UHD and FX Ultra Cassettes

### Tailored FX UHD and FX Ultra Cassettes Building a SmartPart Number

Fixed Letter Series	1. Choose Fiber Type	2. Choose Product Family	3. Choose Port Count (Patch Side)	4. Choose Connector (Patch Side)	5. Choose Connector (Trunk Side)	6. Choose Polarity (Trunk)	7. Choose Adapter Color
<b>FC</b>	<b>3</b>	<b>U</b>	<b>03</b>	<b>LD</b>	<b>MM</b>	<b>A</b>	<b>A</b>
	<b>Fiber Type</b>	<b>Product Family</b>	<b>Port Count (Patch Side)</b>	<b>Connector (Patch Side)</b>	<b>Connector (Trunk Side)</b>	<b>Polarity (Trunk)</b>	<b>Adapter Color</b>
	1 OM1	H FX UHD	03	LD LC Duplex	MM MPO-12 (m)	A Type-A	K Beige
	3 OM3	U FX Ultra (1" Pull)	06	LA LC/APC Duplex	MF MPO-12 (f)	1 Type-A ALT.	N Black
	4 OM4	L FX U Angled Left	12	LS LC Duplex w/Shutters			A Aqua
	S OS2	R FX U Angled Right	18	LQ LC/APC Duplex w/Shutters			E Erika V.
				SD SC Duplex			B Blue
				SC SC Simplex			G Green
				SA SC/APC Duplex			
				SB SC/APC Simplex			
				SS SC Duplex w/Shutters			
				SR SC Simplex w/Shutters			
				SQ SC/APC Duplex w/Shutters			
				SP SC/APC Simplex w/Shutters			
				ST ST			

For further options contact Belden for custom Engineered solutions.

### Using Type-A-Alternate Cassettes to maintain proper port numbering for 10G installations and migration to 40G



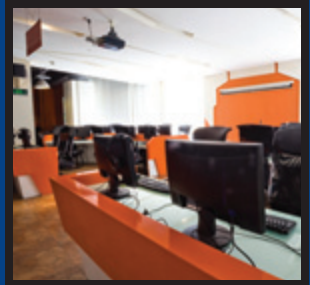
#### Simple Migration from 10G to 40G:

- Retain:
  - FiberExpress FX UHD Patch Panel Housings and Shelves
  - FiberExpress MPO Trunk Assemblies
- Upgrade:
  - Cost-effective FX Ultra/FX UHD Frames
  - Patch Cords

#### Keys to a Successful Upgrade:

- Be Ready to 40GBase-SR4 and future 100GBase-SR4
  - MPO 12-fiber Connectors and Trunk Assemblies
  - Male to Male Trunk Assemblies
- Simplify Port Numbers
  - Type-A Polarity Cassettes with Type-A-Alternate Polarity on one end
- Reduce Replacement Parts
  - Identical Patch Cords on Both Ends
- Prevent Damage to Active Equipment
  - MPO Female to Female Patch Cords

Faster.  
Easier.  
Better.



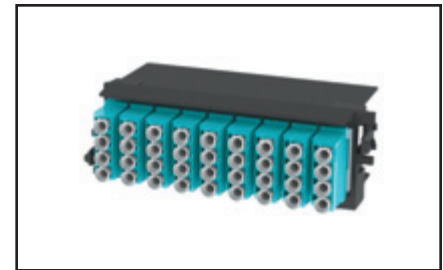
## FiberExpress Patch Panel Systems (continued)

FX UHD and FX Ultra Frames

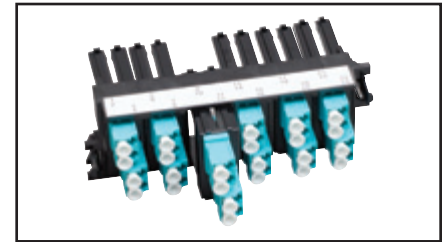
### FX UHD and FX Ultra Frames

#### Standard Frames

Description		Belden Part Number				
Patch Ports (fibers)	Family	OM1 Beige Adapters	OM3 Aqua Adapters	OM4 Erika Violet Adapters	SM Blue Adapters	SM/APC Green Adapters
<b>MPO Type-A (Key-Up/Key-Down)</b>						
18	FX UHD	-	FF3H18MP	FF4H18MP	-	FFSH18MP
12	FX Ultra	-	FF3U12MP	FF4U12MP	-	FFSU12MP
<b>LC Duplex</b>						
18 (36)	FX UHD	-	FF3H18LD	FF4H18LD	FFSH18LD	FFSH18LA
12 (24)	FX Ultra	FF1U12LD	FF3U12LD	FF4U12LD	FFSU12LD	FFSU12LA
<b>LC Duplex w/Shutters</b>						
12 (24)	FX Ultra	-	-	-	FFSU06LS	FFSU06LQ
<b>SC Duplex</b>						
6 (12)	FX Ultra	FF1U06SD	FF3U06SD	FF4U06SD	FFSU06SD	FFSU06SA
<b>SC Simplex</b>						
12 (12)	FX Ultra	-	-	-	FFSU12SC	FFSU12SB
<b>SC Simplex w/Shutters</b>						
6 (6)	FX Ultra	-	-	-	FFSU06SR	FFSU06SP
<b>ST</b>						
12 (12), Metal	FX Ultra	FFSU12ST				-



FF3H18LD, FX UHD Frame, OM3, 18 ports, LC Duplex, Aqua adapters



FF3U12LD, FX Ultra Frame, OM3, 12 ports, LC Duplex, Aqua adapters

### Tailored FX UHD and FX Ultra Frames

#### Building a SmartPart Number

Fixed Letter Series: **FF**

1. Choose Fiber Type: **3**

2. Choose Product Family: **H**

3. Choose Port Count: **18**

4. Choose Connector for Patch Side: **LD**

5. Choose Adapter Color: **A**

Fiber Type	Product Family	Port Count (Patch Side)	Connector (Patch Side)	Adapter Color
1 OM1	H FX UHD	03	LD LC Duplex	K Beige
3 OM3	U FX Ultra (1" Pull)	06	LA LC/APC Duplex	N Black
4 OM4		12	LS LC Duplex w/Shutters	A Aqua
S OS2		18	LQ LC/APC Duplex w/Shutters	E Erika V.
			SD SC Duplex	B Blue
			SC SC Simplex	G Green
			SA SC/APC Duplex	
			SB SC/APC Simplex	
			SS SC Duplex w/Shutters	
			SR SC Simplex w/Shutters	
			SQ SC/APC Duplex w/Shutters	
			SP SC/APC Simplex w/Shutters	
			ST ST	
			MP MPO Up/Down	
			MR MPO Up/Up	

## FiberExpress Patch Panel Systems (continued)

FX UHD and FX Ultra Adapters and Accessories

### Standard FX Ultra KeyConnect Frames

Patch Ports	Description	Belden Part Number
6	FX Ultra KeyConnect Frame 6-Port	FFZH06KC
8	FX Ultra KeyConnect Frame 8-Port	FFZH08KC

### Standard Fiber KeyConnect Adapters

Description	Belden Part Number			
	OM3 Aqua	OM4 Erika Violet	SM Blue	SM/APC Green
LC Duplex	AX104939	AX105641-BK	AX102421	AX105642-BK
SC Simplex	-	-	AX102688	AX105374
ST	← AX102244 →			-

Above adapters are for Black Bezels. Contact your local Belden representative for a complete listing of KeyConnect adapters in other colors.

### Standard Copper KeyConnect Adapters

Description	Belden Part Number		
	Black	Blue	White
10GX RJ45 Coupler	AX104024	AX104019	AX104023
10GX RJ45 Modular Jack	AX102283	AX102288	AX102282
CAT6+ RJ45 Coupler	AX104215	AX104210	AX104214
CAT6+ RJ45 Modular Jack	AX101321	AX101326	AX101320

Above adapters are for Black Bezels. Contact your local Belden representative for a complete listing of KeyConnect adapters in other colors.

### Standard FX UHD Accessories

Description	Belden Part Number
FX UHD Blank Plate	FFZH00BB
FX UHD Patch Cord Release Tool	AX104685
FX Ultra LC Duplex Color-coded Icon Kit	AX104572



FFZH06KC, FX Ultra KeyConnect Frame, 6-Port



AX104572, FX Color-coded Icon Kit, (shown on frame)



AX104024, 10GX RJ45 Coupler

Faster.  
Easier.  
Better.



## FiberExpress Patch Panel Systems (continued)

### FX Ultra Wall Mount and Accessories



AX103928, FX Ultra Stackable Wall-mount Patch Panel



AX103930, FX Ultra Wall-mount Splice Enclosure



AX103928 and AX103932, FX Ultra Wall-mount Patch Panel with Spacer



FX Ultra Splice Trays

Resolute protection while maintaining the utmost adaptability. Complete selection of fiber enclosures provides effortless security and protection while leveraging both the flexibility and density of the FX UHD frames and cassettes.

#### FASTER

- Faster installation with easy access and lightweight housing
- Faster installation with pre-terminated cassettes

#### EASIER

- Easier configuration with FX UHD and FX Ultra modules in LC, SC and ST
- Easier security with optical door lock
- Easier expansion with stackable design

#### BETTER

- Better with support for Pre-Term and Field-Term including splicing
- Better management with independent doors for trunk and patching sides
- Better density with up to 36 LC Duplex ports

#### FX Ultra Wall Mount

Description	Number of Module Bays	Splice Trays	Belden Part Number
Stackable Wall Mount Patch Panel, Black	2	2 x 8" (Up to 48-Splices)	AX103928
Stackable Wall Mount Splice Enclosure	0	4 x 10" (Up to 144-Splices)	AX103930

Splice trays sold separately

#### FX Ultra Splice Trays

Description	Splices per Tray	Belden Part Number
8" Splice Tray	24	AX103912
10" Splice Tray	36	AX103913

All splice trays accommodate 2.5 mm OD single fiber splice protectors up to 80 mm in length

#### FX Ultra Wall Mount Accessories

Description	Belden Part Number
2-inch Spacer, Black	AX103932
Door Lock Kit	AX103934

## FiberExpress Patch Panel Systems (continued)

### FX Manager Patch Panels and Cassettes



AX101943, FX M 1U Rack-Mount Patch Panel

Compact in size while being exceedingly serviceable. Unique feature-rich cassettes provide a compact solution for housing fusion splices, field-term or pre-term within a high-design fiber connectivity system.

#### FASTER

- Faster installation with simple lightweight housing
- Faster patch cord access for moves, adds and changes with 1" cassette pullout

#### EASIER

- Easier fusion splicing with unique splice cassette
- Easier field-termination with cassette entry from rear of the housing

#### BETTER

- Better cross-connect implementation with 4U vertical cassette mounting
- Better upgrade path with MPO pre-term solutions



AX100935, FX M 4U 23" Rack-Mount Patch Panel

#### FX Manager

Description	Module Bays	Belden Part Number
1U Rack-Mount Patch Panel	3	AX101943
1U Patch Cord Management Accessory	N/A	AX104032
4U Rack-Mount Patch Panel	12	AX101085
4U 23" Rack-Mount Patch Panel	16	AX100935



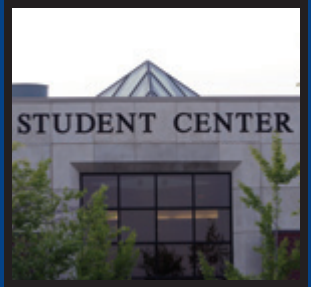
AX102307 LC Duplex Pre-Terminated Connector Module

#### Standard FX M Cassettes

Patch Ports (fibers)	Trunk Ports	Family	Belden Part Number		
			OM1 Beige Adapters	OM3 Aqua Adapters	OS2 Blue Adapters
<b>LC Duplex to MPO-12(m)</b>					
12 (24)	2	FX M	AX102309	AX102308	AX102307
<b>SC Duplex to MPO-12(m)</b>					
6 (12)	1	FX M	AX101091	AX101114	AX101090
<b>ST to MPO-12(m)</b>					
12 (12)	1	FX M	AX101189	AX101190	AX101188



Faster.  
Easier.  
Better.



## FiberExpress Patch Panel Systems (continued)

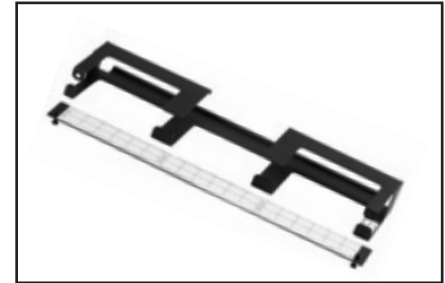
FX Manager Frames and Accessories

### Standard FX M Frames

Patch Ports (fibers)	Family	Belden Part Number		
		OM1 Beige Adapters	OM3 Aqua Adapters	OS2 Blue Adapters
<b>MPO Type-A (Key-Up/Key-Down)</b>				
6	FX M	<b>AX101484 (Black Adapters)</b>		
<b>LC Duplex</b>				
12 (24)	FX M	<b>AX102306</b>	<b>AX103070</b>	<b>AX102305</b>
6 (12)	FX M	<b>AX101528</b>	<b>AX103071</b>	<b>AX101527</b>
<b>SC Duplex</b>				
6 (12)	FX M	<b>AX101714</b>	<b>AX101114</b>	<b>AX101713</b>
<b>SC Simplex</b>				
6 (6)	FX M	-	-	<b>AX100943</b>
<b>ST</b>				
12 (12), Metal	FX M	←	<b>AX101186</b>	→
6 (6), Metal	FX M	←	<b>AX100936</b>	→

### Standard Accessories

Description	Belden Part Number
FX M Blank Module	<b>AX104462</b>
Flex Kit (Bend Limiting Tube, Transition Tube, Manifold)	<b>AX100945</b>
Splice Holder Kit (4 x 6-position splice holders & Wiremarkers)	<b>AX105538</b>



AX102032, FX Manager 1U Cable Management Accessory



AX100945, Flex Kit

## FiberExpress Patch Panel Systems (continued) FX Patch Rack Mount and Wall Mount Patch Panels



AX100041, FX 12/24 Port (1U) Rack-mount Patch Panel

Economical yet effective. Low to medium density rack mount fiber panels with simple adapter strips are the mainstay for fiber field termination.

### FASTER

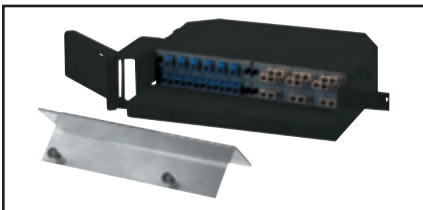
- Faster access to rear side (trunk) connectivity without removing patch cords

### EASIER

- Easier on the budget with economical adapter strips
- Easier access to the trunk side connectivity with swing out faceplate

### BETTER

- Better support for mixed field-term connectivity including splicing
- Better use of valuable space through a compact footprint



AX100068, FX 24/48 Port (2U) Rack-mount Patch Panel (shown loaded)

### Rack Mount Patch Panels

Description	Maximum Number of Adapter Strips	Splice Trays	Belden Part Number
1U Rack Mount	2	1 x 8" (Up to 24-Splices)	AX100041
2U Rack Mount	4	2 x 8" (Up to 48-Splices)	AX100068
3U Rack Mount (Rear Access)	4	2 x 8" (Up to 48-Splices)	AX104934
4U Rack Mount	8	4 x 8" (Up to 96-Splices)	AX100116



AX104934, FX (3U) Rack-Mount Patch Panel (Rear Access) (shown loaded)

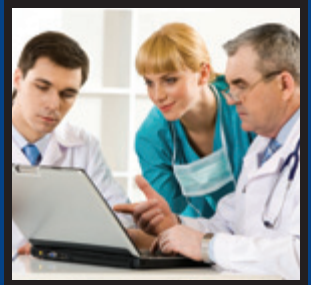
### Wall Mount Patch Panels

Description	Maximum Number of Adapter Strips	Splice Trays	Belden Part Number
Small Wall-Mount	2	1 x 8" (Up to 24-Splices)	AX100495
Medium Wall-Mount	4	2 x 8" (Up to 48-Splices)	AX100540
Large Wall-Mount	8	4 x 8" (Up to 96-Splices)	AX100542



AX100116, FX 48/96 Port (4U) Rack-mount Patch Panel (shown loaded)

Faster.  
Easier.  
Better.



## FiberExpress Patch Panel Systems (continued)

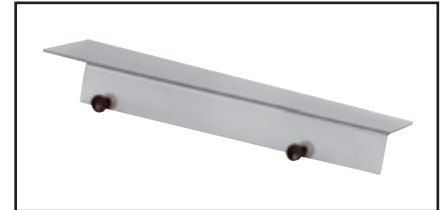
### FX Patch Adapter Strips and Accessories

#### Standard Optical Fiber Adapter Strips

Patch Ports (fibers)	Family	Belden Part Number			
		OM1 Beige Adapters	OM3 Aqua Adapters	SM Blue Adapters	SM/APC Green Adapters
<b>LC Duplex</b>					
12 (24)	FX Patch	AX101741	-	AX101743	AX105561
6 (12)	FX Patch	AX101729	-	AX101731	AX105537
<b>SC Duplex</b>					
6 (12)	FX Patch	AX100098	-	AX101409	-
3 (6)	FX Patch	AX100094	-	AX101407	-
<b>SC Simplex</b>					
12 (12)	FX Patch	-	-	AX100532	AC301420
<b>ST</b>					
12 (12)	FX Patch	AX100528		-	-
6 (6)	FX Patch	AX100534		-	-

#### Standard Optical Fiber Accessories

Description	Belden Part Number
FX Patch Blank Strip	AX100066
1U Front Cover, Smoked Plexiglas	AX100045
8" Splice Kit (Tray, Holders, Wiremarkers & Cover)	A0649869



AX100045, Front Cover for 1U



AX100495, Small Wall Mount (page 18)



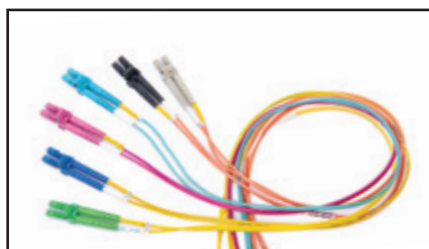
AX100542, Large Wall Mount (page 18)

## FiberExpress Pre-Terminated Assemblies

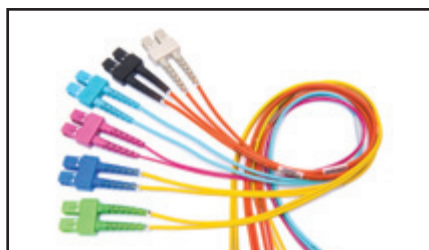
### FX Patch Cords



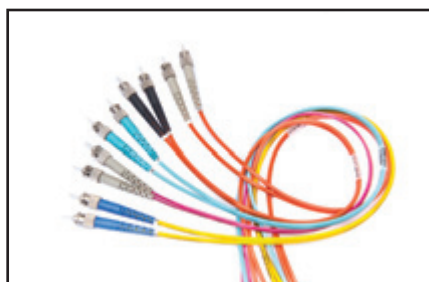
FX MPO-12(f) Patch Cords, Assortment



FX LC Duplex Patch Cords, Assortment



FX SC Duplex Patch Cords, Assortment



FX ST Patch Cords, Assortment

Uncomplicated, robust, versatile and conveniently available. Superior quality and performance FX patch cords deliver a robust design to withstand the rigours of daily use in both off-the-shelf standard configurations and rapid custom tailored installations.

#### FASTER

- Faster delivery with off-the shelf availability of standard items
- Faster identification of fiber type with Erika Violet for OM4 cable and connectors

#### EASIER

- Easier installation in dense cable trays with small diameter cord options
- Easier ordering with simple intelligent *SmartPart* Numbers
- Easier polarity management with industry leading easy-to-use duplex clips

#### BETTER

- Better architectural flexibility with low-loss OM4 0.2 dB MPO and 0.15 dB LC connectors
- Better ruggedization with larger diameter cord options
- Better flexibility with multiple connector options including LC, SC, ST and MPO
- Better quality through exhaustive design validation against TIA standards

#### FX Patch Cords - Standard Performance

Description	FX OM1	FX OM3	FX OM4	FX SM	FX SM/APC
<b>Cable Performance - LC/SC/ST</b>					
IL Max. 850 nm/1300 nm (dB/Km)	3.5/1.2	3.25/1.2	3.0/1.2	-	
IL Max. 1310 nm/1550 nm (dB/Km)	-	-	-	0.5/0.5	
Fire Rating	LC/SC/ST: Riser				
Cable Style	LC: 2 mm Duplex Zip Cord SC/ST/Hybrid: 3 mm Duplex Zip Cord				
<b>Connector Performance - LC/SC/ST</b>					
IL Max. (dB)	0.25	0.25	0.15	0.35	0.35
Polish - RL Typ. (dB)	PC - 30	PC - 30	PC - 30	UPC - 55	APC - 65

Description	FX OM1	FX OM3	FX OM4	FX SM	FX SM/APC
<b>Cable Performance - MPO</b>					
IL Max. 850 nm/1300 nm (dB/Km)	3.5/1.2	3.25/1.0	3.0/1.0	-	
IL Max. 1310 nm/1550 nm (dB/Km)	-	-	-	0.5/0.5	
Fire Rating	Plenum				
Cable Style	MPO-12: 3.0 mm Round				
<b>Connector Performance - MPO</b>					
IL Max. (dB)	0.5	0.35	0.2	-	0.75
Polish - RL Typ. (dB)	PC - 30	PC - 30	PC - 30	-	APC - 60

Faster.  
Easier.  
Better.

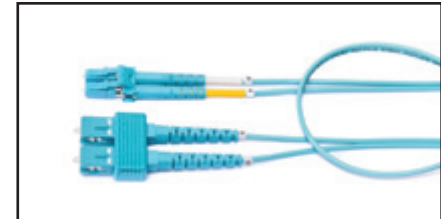


## FiberExpress Pre-Terminated Assemblies (continued)

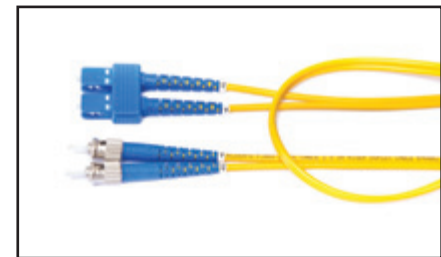
### FX Patch Cords

#### Standard FX Patch Cords

Length (m)	OM1 Beige/Orange	OM3 Aqua	OM4 Erika Violet	OS2 Blue/Yellow	OS2/APC Green/Yellow
<b>MPO-12(f) to MPO-12(f)</b>					
2	-	FP3MFMF002M	FP4MFMF002M	-	FPSMFMF002M
3	-	FP3MFMF003M	FP4MFMF003M	-	FPSMFMF003M
5	-	FP3MFMF005M	FP4MFMF005M	-	FPSMFMF005M
<b>LC Duplex to LC Duplex</b>					
2	-	FP3LDLD002M	FP4LDLD002M	FPSLDLD002M	FPSLALA002M
3	-	FP3LDLD003M	FP4LDLD003M	FPSLDLD003M	FPSLALA003M
5	-	FP3LDLD005M	FP4LDLD005M	FPSLDLD005M	FPSLALA005M
<b>SC Duplex to SC Duplex</b>					
2	FP1SDSD002M	FP3SDSD002M	FP4SDSD002M	FPSSDSD002M	FPSASA002M
3	FP1SDSD003M	FP3SDSD003M	FP4SDSD003M	FPSSDSD003M	FPSASA003M
5	FP1SDSD005M	FP3SDSD005M	FP4SDSD005M	FPSSDSD005M	FPSASA005M
<b>ST to ST (Duplex Cord)</b>					
2	FP1STST002M	FP3STST002M	FP4STST002M	FPSSTST002M	-
3	FP1STST003M	FP3STST003M	FP4STST003M	FPSSTST003M	-
5	FP1STST005M	FP3STST005M	FP4STST005M	FPSSTST005M	-
<b>Hybrid: LC Duplex to SC Duplex</b>					
3	FP1LSDSD003M	FP3LSDSD003M	FP4LSDSD003M	FPSLSDSD003M	FPSLASA003M
<b>Hybrid: SC Duplex to ST</b>					
3	FP1SDST003M	FP3SDST003M	-	FPSSDST003M	-



FP3LSDSD003M, Hybrid LC Duplex to SC Duplex, OM3 Aqua



FPSSDST003M, Hybrid SC Duplex to ST, OS2 Blue

#### Tailored FX Patch Cords

##### Building a SmartPart Number

Fixed Letter Series	1. Choose Fiber Type	2. Choose Connector 1	3. Choose Connector 2	4. Choose Length*	5. Choose Fire Rating	6. Choose Cable Construction	7. Choose Polarity	8. Choose Jacket Color
FP	S	LB	LB	10M5	R	4	S	Y
<b>Fiber Type</b>	<b>Connector 1</b>	<b>Connector 2</b>	<b>Length*</b>	<b>Fire Rating</b>	<b>Cable Construction</b>	<b>Polarity</b>	<b>Jacket Color</b>	
1 OM1	LD LC Duplex	LD LC Duplex	001M to 300M (use M as decimal)	R Riser	2 Duplex 2.0 mm	X A/B (Cross)	O Orange	
3 OM3	LC LC Simplex	LC LC Simplex		P Plenum	3 Duplex 3.0 mm	S A/A (Straight)	Y Yellow	
4 OM4	LM Mini-LC Duplex	LM Mini-LC Duplex		L LSHZ	4 Simplex 2.0 mm	A Type-A	A Aqua	
S OS2	LA LC/APC Duplex	LA LC/APC Duplex		N CM/PVC	5 Simplex 3.0 mm	B Type-B	E Erika V.	
	LB LC/APC Simplex	LB LC/APC Simplex			7 Round 3.0 mm	C Type-C		
	SD SC Duplex	SD SC Duplex						
	SC SC Simplex	SC SC Simplex						
	SA SC/APC Duplex	SA SC/APC Duplex						
	SB SC/APC Simplex	SB SC/APC Simplex						
	ST ST	ST ST						
	MM MPO-12(m)	MM MPO-12(m)						
	MF MPO-12(f)	MF MPO-12(f)						

\*For assemblies greater than 15 m in length consider Multi-fiber cable assemblies with robust features such as heavier cable jackets and pulling eyes.

#### Examples:

**FPSLALA10M5L2XY** - LC/APC duplex to LC/APC duplex, 10.5m in length, OS2 Singlemode LSHZ (Low Smoke Zero Halogen) 2 mm duplex zip cord with A-to-B polarity and a yellow cable jacket

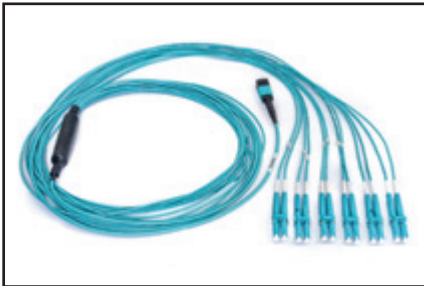
**FP4MFMF010MP6AA** - MPO-12 female to MPO-12 male, 10m in length, OM4 multi mode Plenum 2 mm round interconnect cable with Type-A polarity and aqua cable jacket and connectors

## FiberExpress Pre-Terminated Assemblies (continued)

### FX Hydra Assemblies



FP3LD4F003M, FX Hydra Assembly, OM3, 4 LC Duplex, MPO-12(Female), 40G Polarity, 3 m



FP3LDMF003M, FX Hydra Assembly, OM3, 6 LC Duplex, MPO-12(Female), Type-A Polarity, 3 m

Uniquely suited within dense fixed environments. Compact alternative for statically configured patch cords and pre-term cassettes eliminates connection points to improve performance and alleviate space constraints.

#### FASTER

- Faster deployment at the switch with MPO to LC fanout construction

#### EASIER

- Easier upgradability from 10G to 40G or 100G with MPO connectivity

#### BETTER

- Better identification of fiber type with Erika Violet for OM4 cable and connectors
- Better airflow with small transition point construction

### FX Hydra Assemblies - Standard Performance

Description	FX OM3	FX OM4	FX SM	FX SM/APC
<b>Cable Performance - LC/SC/ST</b>				
IL Max. 850 nm/1300 nm (dB/Km)	3.25/1.0	3.0/1.0	-	
IL Max. 1310 nm/1550 nm (dB/Km)	-	-	0.5/0.5	
Fire Rating	Riser			
Cable Style	MPO: 3.0 mm Round LC: 2 mm Simplex Zip Cord			
<b>Connector Performance - LC</b>				
IL Max. (dB)	0.25	0.15	0.35	0.35
Polish - RL Typ. (dB)	PC - 30	PC - 30	UPC - 55	APC - 65
Fanout Length	0.5 m, In-Line			
<b>Connector Performance - MPO</b>				
IL Max. (dB)	0.35	0.2	-	0.75
Polish - RL Typ. (dB)	PC - 30	PC - 30	-	APC - 60

Faster.  
Easier.  
Better.



## FiberExpress Pre-Terminated Assemblies (continued)

### FX Hydra Assemblies

#### Standard FX Hydra Assemblies

Description	OM3 Aqua	OM4 Erika Violet	OS2 Blue/Yellow
<b>10G Transceiver Pinout</b>			
MPO-12(f) to 6 x LC Duplex, 1 m In-Line Fanout, 2 m in length	FP3LDMF002M	FP4LDMF002M	FPSLDMF002M
MPO-12(f) to 6 x LC Duplex, 1 m In-Line Fanout, 3 m in length	FP3LDMF003M	FP4LDMF003M	FPSLDMF003M
MPO-12(f) to 6 x LC Duplex, 1 m In-Line Fanout, 5 m in length	FP3LDMF005M	FP4LDMF005M	FPSLDMF005M
<b>40G Transceiver Pinout</b>			
MPO-12(f) to 4 x LC Duplex, 1 m In-Line Fanout, 2 m in length	FP3LD4F002M	FP4LD4F002M	FPSLD4F002M
MPO-12(f) to 4 x LC Duplex, 1 m In-Line Fanout, 3 m in length	FP3LD4F003M	FP4LD4F003M	FPSLD4F003M
MPO-12(f) to 4 x LC Duplex, 1 m In-Line Fanout, 5 m in length	FP3LD4F005M	FP4LD4F005M	FPSLD4F005M

#### Tailored FX Hydra Assemblies

##### Building a SmartPart Number

Fixed Letter Series	1. Choose Fiber Type	2. Choose Connector 1	3. Choose Connector 2	4. Choose Length	5. Choose Fire Rating	6. Choose Cable Construction	7. Choose Polarity	8. Choose Jacket Color																																				
<b>FP</b>	<b>3</b>	<b>LD</b>	<b>MM</b>	<b>003M</b>	<b>R</b>	<b>7</b>	<b>A</b>	<b>A</b>																																				
	<table border="1"> <thead> <tr> <th>Fiber Type</th> <th>Connector 1</th> </tr> </thead> <tbody> <tr> <td>1 OM1</td> <td>LD LC Duplex</td> </tr> <tr> <td>3 OM3</td> <td>LC LC Simplex</td> </tr> <tr> <td>4 OM4</td> <td>LM Mini-LC Duplex</td> </tr> <tr> <td>S OS2</td> <td>LA LC/APC Duplex</td> </tr> <tr> <td></td> <td>LB LC/APC Simplex</td> </tr> </tbody> </table>	Fiber Type	Connector 1	1 OM1	LD LC Duplex	3 OM3	LC LC Simplex	4 OM4	LM Mini-LC Duplex	S OS2	LA LC/APC Duplex		LB LC/APC Simplex	<table border="1"> <thead> <tr> <th>Connector 2</th> <th>Length</th> </tr> </thead> <tbody> <tr> <td>MM MPO-12(m)</td> <td>00M2 to 300M (use M as decimal)</td> </tr> <tr> <td>MF MPO-12(f)</td> <td></td> </tr> <tr> <td>4M MPO-12(m), 40G*</td> <td></td> </tr> <tr> <td>4F MPO-12(f), 40G*</td> <td></td> </tr> </tbody> </table>	Connector 2	Length	MM MPO-12(m)	00M2 to 300M (use M as decimal)	MF MPO-12(f)		4M MPO-12(m), 40G*		4F MPO-12(f), 40G*		<table border="1"> <thead> <tr> <th>Fire Rating</th> <th>Cable Construction</th> </tr> </thead> <tbody> <tr> <td>R Riser</td> <td>7 Round 3.0 mm</td> </tr> <tr> <td>P Plenum</td> <td></td> </tr> <tr> <td>L LSZH</td> <td></td> </tr> </tbody> </table>	Fire Rating	Cable Construction	R Riser	7 Round 3.0 mm	P Plenum		L LSZH		<table border="1"> <thead> <tr> <th>Polarity</th> <th>Jacket Color</th> </tr> </thead> <tbody> <tr> <td>A Type-A</td> <td>O Orange</td> </tr> <tr> <td></td> <td>Y Yellow</td> </tr> <tr> <td></td> <td>A Aqua</td> </tr> <tr> <td></td> <td>E Erika V.</td> </tr> </tbody> </table>	Polarity	Jacket Color	A Type-A	O Orange		Y Yellow		A Aqua		E Erika V.
Fiber Type	Connector 1																																											
1 OM1	LD LC Duplex																																											
3 OM3	LC LC Simplex																																											
4 OM4	LM Mini-LC Duplex																																											
S OS2	LA LC/APC Duplex																																											
	LB LC/APC Simplex																																											
Connector 2	Length																																											
MM MPO-12(m)	00M2 to 300M (use M as decimal)																																											
MF MPO-12(f)																																												
4M MPO-12(m), 40G*																																												
4F MPO-12(f), 40G*																																												
Fire Rating	Cable Construction																																											
R Riser	7 Round 3.0 mm																																											
P Plenum																																												
L LSZH																																												
Polarity	Jacket Color																																											
A Type-A	O Orange																																											
	Y Yellow																																											
	A Aqua																																											
	E Erika V.																																											

\* For use with 40G Transceivers using MPO-12 connectors configured as 4 x 10G Ports.

For further options including pulling eyes, stagger, fanout length see pages 26-27 for FX Multi-Fiber Cable Assemblies.

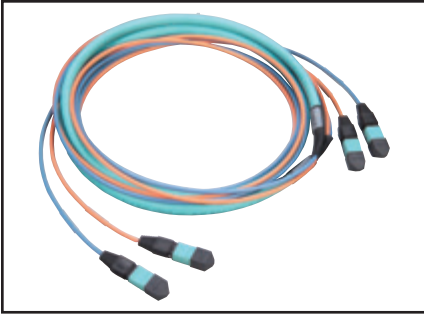
#### FX Hydra Assembly – Traditional Pinout



#### FX Hydra Assembly – 40G Transceiver Pinout



## FiberExpress Pre-Terminated Assemblies (continued) FX MPO Trunk Assemblies



FA400261, MPO(F) - MPO(F), 24 (2x12) Fibers, OM3 (50 µm), Type C - Cross-Over Assembly

Innovative performance with ingrained simplicity. Industry-leading low-loss MPO Trunks are the foundation of Easier, Faster and Better pre-terminated fiber connectivity solutions revolutionizing the data center.

### FASTER

- Faster identification of fiber type with Erika Violet for OM4 Cable, Connectors and Adapters
- Faster installation with pre-terminated solutions

### EASIER

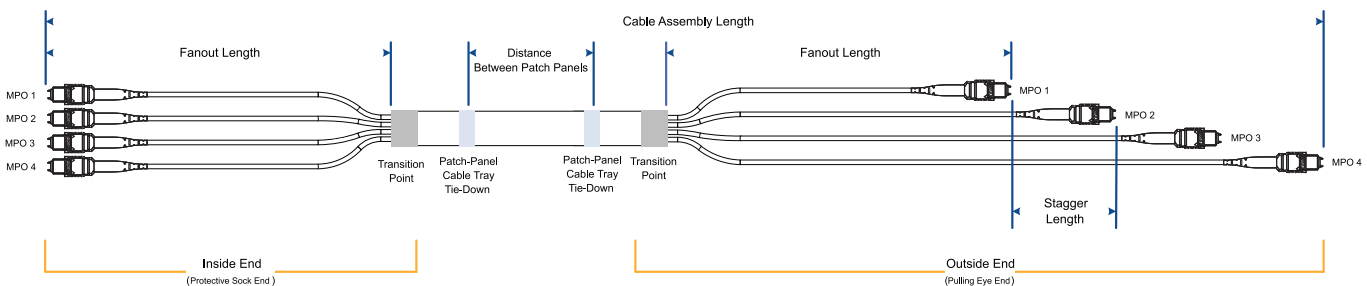
- Easier installation with 3-flange real and default pulling eye
- Easier ordering with simple intelligent *SmartPart* Numbers
- Easier upgradability to 40G and 100G with MPO pre-term solutions

### BETTER

- Better architectural flexibility with high-performance 0.2 dB OM4 MPO connectors
- Better quality through exhaustive design validation against TIA standards

### FX MPO Trunk Assemblies - Standard Performance

Description	FX OM1	FX OM3	FX OM4	FX SM
<b>Cable Performance</b>				
IL Max. 850 nm/1300 nm (dB/Km)	3.5/1.2	3.25/1.0	3.0/1.0	-
IL Max. 1310 nm/1550 nm (dB/Km)	-	-	-	0.35/0.25
Fire Rating	Plenum			
Cable Style	Mini-Distribution			
<b>Connector Performance - MPO-12</b>				
IL Max. (dB)	0.5	0.35	0.2	0.75
Polish - RL Typ. (dB)	PC - 30	PC - 30	PC - 30	APC - 60
Fanout Length	0.5 m, In-Line			
<b>Connector Performance - MPO-24</b>				
IL Max. (dB)	0.5	0.35	0.2	0.75
Polish - RL Typ. (dB)	PC - 30	PC - 30	PC - 30	APC - 60





Faster.  
Easier.  
Better.



## FiberExpress Pre-Terminated Assemblies (continued)

### FX MPO Trunk Assemblies

#### Standard FX MPO Trunk Assemblies

##### Building a SmartPart Number

Fixed Letter Series	1. Choose Fiber Type	2. Choose Connectors	3. Choose Connector Gender	4. Choose Polarity (outside)	5. Choose Connector Count (per side)	6. Choose Length
<b>FM</b>	<b>4</b>	<b>M</b>	<b>M</b>	<b>A</b>	<b>2</b>	<b>025M</b>
	<b>Fiber Type</b>	<b>Connectors</b>	<b>Connector Gender</b>	<b>Polarity (outside)</b>	<b>Connector Count</b>	<b>Length</b>
	3 OM3	M MPO-12	M Male to Male	A Type-A	1 12 Fiber	005M to 350M (use M as decimal)
	4 OM4		E Extension (M to F)	B Type-B	2 24 Fiber	
	S OS2			C Type-C	D 144 Fiber	

##### Examples:

**FM4MMA2025M** - FX MPO Trunk, OM4, MPO-12 (Male to Male), Type-A, 2 MPO (24 fibers), 25 M, OFNP, Mini-Distribution (3.0 mm Sub-Units), Fan-Out: 0.5 M x In-Line, Erika Violet jacket

**FMSMEAD17M5** - FX MPO Trunk, OS2, MPO-12/APC (Male to Female), Type-A, 12 MPO (144 fibers), 17.5 M, OFNP, Mini-Distribution (3.0 mm Sub-Units), Fan-Out: 0.5 M x In-Line, Yellow jacket

#### Tailored FX MPO Trunk Assemblies

##### Building a SmartPart Number

Fixed Letter Series	1. Choose Fiber Type	2. Choose Connectors	3. Choose Connector Gender	4. Choose Polarity (outside)	5. Choose Connector Count (per side)	6. Choose Length	7. Choose Fire Rating	8. Choose Cable Construction	9. Choose Fan-Out Geometry	10. Choose Jacket Color
<b>FM</b>	<b>4</b>	<b>M</b>	<b>M</b>	<b>A</b>	<b>4</b>	<b>25M5</b>	<b>P</b>	<b>M</b>	<b>2</b>	<b>A</b>
	<b>Fiber Type</b>	<b>Connectors</b>	<b>Connector Gender</b>	<b>Polarity (outside)</b>	<b>Connector Count</b>	<b>Length</b>	<b>Fire Rating</b>	<b>Cable Construction</b>	<b>Fan-Out Geometry</b>	<b>Jacket Color</b>
	1 OM1	M MPO-12	M Male to Male	A Type-A	1 12 Fiber	001M to 500M (use M as decimal)	R Riser	M Mini-Distribution 3 mm	D 0.5 m x In-Line	O Orange
	3 OM3		F Female to Female	B Type-B	2 24 Fiber		P Plenum		E 1.0 m x In-Line	Y Yellow
	4 OM4		E Extension (M to F)	C Type-C	3 36 Fiber		L LSZH		F 1.5 m x In-Line	A Aqua
	S OS2				4 48 Fiber		I I/O Plenum		G 2.0 m x In-Line	E Erika V.
					6 72 Fiber		A Plenum Armored		1 0.5 m x Staggered 80 mm/1 conn.	
					8 96 Fiber		B I/O Plenum Armored		2 0.5 m x Staggered 80 mm/2 conn.	
					D 144 Fiber		H I/O LSZH		3 0.5 m x Staggered 80mm/3 conn.	
							C LSZH Armored		4 0.5 m x Staggered 80 mm/4 conn.	
							D I/O LSZH Armored		6 0.5 m x Staggered 80 mm/6 conn.	
							O Outdoor			

##### Examples:

**FM4MMA425M5PM2A** - FX MPO Trunk, OM4, MPO-12 (Male to Male), Type-A, 4 MPO (48 fibers), 25.5 m, OFNP, Mini-Distribution (3.0 mm Sub-Units), Fan-Out: 0.5 m x Stag 80 mm/2 Conn., Aqua connectors and jacket

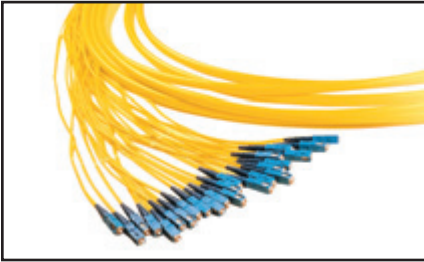
**FMSMFC8200MPMEY** - FX MPO Trunk, OS2, MPO-12/APC (Female to Female), Type-C, 8 MPO (96 fibers), 200 m, OFNP, Mini-Distribution (3.0 mm Sub-Units), Fan-Out: 1.0 m x In-Line, Yellow jacket

For even more options FX MPO Trunk Assemblies can be Engineered to meet any requirement. Please contact your local Belden representative for more information.

#### Pulling Eye Diameter

Description	12-Fiber	24-Fiber	36-Fiber	48-Fiber	72-Fiber	96-Fiber	144-Fiber
<b>Installation Diameter - MPO-12 (Total Connectors)</b>	<b>1</b>	<b>2</b>	<b>3</b>	<b>4</b>	<b>6</b>	<b>8</b>	<b>12</b>
One Bundle, No Stagger	19.5 mm	25.4 mm	30.0 mm	31.7 mm	38.1 mm	41.900	50.8 mm
1 Connector per Bundle, 8 cm Bundle Stagger		19.5 mm	19.5 mm	19.5 mm	19.5 mm	19.5 mm	19.5 mm
2 Connectors per Bundle, 8 cm Bundle Stagger				25.4 mm	25.4 mm	25.4 mm	25.4 mm
3 Connectors per Bundle, 8 cm Bundle Stagger					30.0 mm	30.0 mm	30.0 mm
4 Connectors per Bundle, 8 cm Bundle Stagger						31.7 mm	31.7 mm
6 Connectors per Bundle, 8 cm Bundle Stagger							38.1 mm

## FiberExpress Pre-Terminated Assemblies (continued) Multi-Fiber Cable Assemblies



Multi-Fiber Cable Assembly

Superior consistent craftsmanship culminating in near instantaneous installation. Highly configurable multi-fiber pre-terminated cable assemblies are engineering for maximum performance and crafted ensuring superior quality.

### FASTER

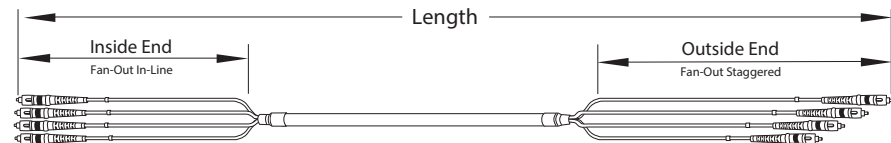
- Faster identification of fiber type with Erika Violet for OM4 cable, connectors and adapters
- Faster installation with pre-terminated solutions

### EASIER

- Easier installation with 3-flange reel and default pulling eye
- Easier ordering with simple intelligent *SmartPart* Numbers

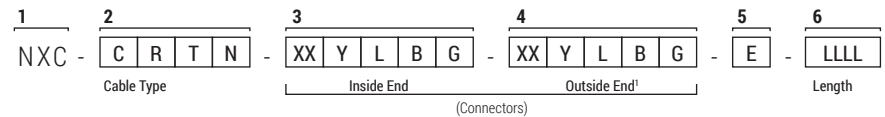
### BETTER

- Better quality through exhaustive design validation against TIA standards
- Better flexibility through absolute customizability



### Product Engineering Code (PEC) - GUIDELINE

Use the following options to determine the Product Engineering code (PEC) and order custom combination of cable type, connectors and length required.



### 1 NXC identifies the product family for all fiber cable assemblies

### 2 Select Cable Type

C Cable Construction	R Fire Rating	T Fiber Type	N Fiber Count
M Distribution cable	R OFNR - Riser	M OM1 - 62.5 µm Multimode	6 6 Fibers
P Breakout 2.0 mm units	P OFNP - Plenum	N OM2 - 50 µm Multimode	L 12 Fibers
U Mini-distribution <sup>2</sup>	B Plenum Indoor Armored	F OM3 - 50 µm Multimode	X 24 Fibers Sub-units
O Loose Tube	D Outdoor	G OM4 - 50 µm Multimode	C 24 Fibers Non-unitized <sup>3</sup>
	E Indoor / Outdoor Plenum	S OS2 - Singlemode	V 48 Fibers
			T 72 Fibers
			M 96 Fibers
			Z 144 Fibers

Faster.  
Easier.  
Better.

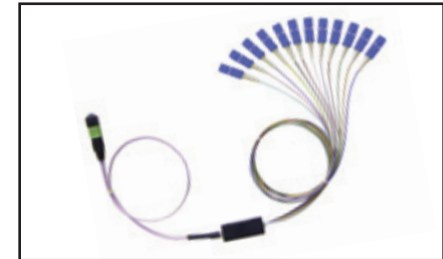


## FiberExpress Pre-Terminated Assemblies (continued)

### Multi-Fiber Cable Assemblies

#### 3 and 4 Inside End and Outside End (Connectors)

XX Connectors	Y Polish / Performance Level
LC LC Simplex	P PC - Physical Contact Multimode
LD LC Duplex	U UPC - Ultra Physical Contact Singlemode
SC SC Simplex	A APC - Angled Polish Contact Singlemode
SD SC Duplex	Z Not applicable <sup>4</sup>
ST ST	
PH 12-fiber MPO female	
PG 12-fiber MPO male	
LM mSFP (Mini LC)	
ZZ OPEN <sup>4</sup>	



900 µm Fan-out Assembly

#### Fan-out

#### 5 Pulling Eye

L Fan-Out Length	B Fan-Out Construction	G Fan-Out Geometry	E Pulling Eye
C 0.5 m	B 900 µm Tight buffer	N In line or None	O At Outside end <sup>5</sup>
F 1 m	E 2.0 mm jacket	A Staggered 25 mm	N None
G 2 m	G 3.0 mm jacket	B Staggered 50 mm	
N None <sup>4</sup>	N None <sup>4</sup>		

#### 6 Length

LLLL is the length from tip to tip in meters: 0001, 0005, 0015, 0100, etc.

#### Examples:

PEC Code	Description
<b>NXC-MRFL-LCPFBN-LCPFBN-O-0015</b>	Multi-Fiber cable assembly, Distribution cable, Riser, OM3(50 µm), 12 fibers, LC/PC - LC/PC, Fan-out: 1 m - 900 µm - In line, with pulling eye, 15 m
<b>NXC-UPFV-LDPFEN-PGPFEN-N-0020</b>	Multi-Fiber cable assembly, Mini-distribution cable, Plenum, OM3 (50 µm), 48 fibers, LC Duplex/PC - MPO (m)/PC, Fan-out: 1 m - 2.0 mm(LC) & 3.0 mm (MPO) - In Line, No pulling eye, 20 m

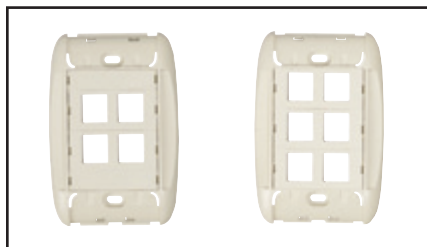
Please contact Belden to validate your PEC Code and for any other fiber cable assembly combinations not available in this guideline.

#### Notes:

1. Outside end refers to the pulling side.
2. Mini-distribution cable is a round cable with sub-units of 12 Loose tube fibers each. It's used for MPO assemblies.
3. Single jacket design. It's only used for Distribution cable.
4. Only for Outside End. It's used for pigtailed.
5. Pulling eye is strongly recommended for assemblies longer than 10 m.

## FiberExpress Workstation Outlets

MediaFlex Faceplate Kits, Workstation Outlets, and Window Covers



AX102428, AX102430, MediaFlex KeyConnect Faceplate Kit

Tasteful designs balancing purpose and elegance. Grounded in the reconfigurable KeyConnect platform Belden workstation outlets provide a stylish footprint for copper, fiber and multimedia connectivity at the workstation.

### FASTER

- Faster installation with support for standard NEMA type outlet boxes

### EASIER

- Easier customizability for mixed copper, fiber and multimedia using the KeyConnect keystone-style system
- Easier port identification through elegant integrated label holders
- Easier mounting in constrained spaces with optional angled

### BETTER

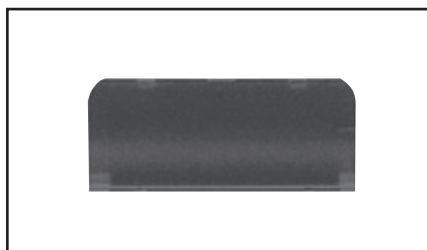
- Better cable management and bend radius control with surface adapter boxes
- Better looking modern curved styling available in a variety of colors



AX101874, MediaFlex Adapter Box, Double-Gang

### MediaFlex Faceplate Kits

Description	Belden Part Number	
	Almond	Elec. White
<b>MediaFlex Faceplate Kit, KeyConnect-Style</b>		
2-port, Flush, Single-gang	AX104494	AX104495
4-port, Flush, Single-gang	AX102428	AX102429
6-port, Flush, Single-gang	AX102430	AX102431
2-port, Angled, Single-gang	AX104498	AX104499
4-port, Angled, Single-gang	AX102432	AX102433



AX101777, Labeling Window Cover for MediaFlex Plates

### MediaFlex Workstation Outlets

Description	Belden Part Number	
	Almond	Elec. White
<b>MediaFlex Plates</b>		
Single-gang	AX101746	AX101747
Double-gang	AX101870	AX101871
<b>MediaFlex Surface Adapter Boxes</b>		
Single-gang	AX102481	AX102482
Double-gang	AX101874	AX101875

Contact Customer Service for other colors and configurations.

### MediaFlex ID Window Covers

Description	Belden Part Number
Window Cover, Clear, bag of 25 units	AX101773
Window Cover, Gray, bag of 25 units	AX101774
Window Cover, Almond, bag of 25 units	AX101775
Window Cover, Elec. White, bag of 25 units	AX101776
Window Cover, Black, bag of 25 units	AX101777

Faster.  
Easier.  
Better.



## FiberExpress Workstation Outlets (continued)

### MediaFlex Multimedia Inserts and KeyConnect Adapters

#### MediaFlex Inserts

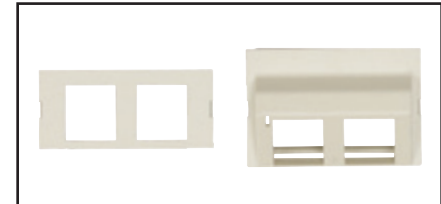
Description	Belden Part Number		
	Almond	Elec. White	Black
<b>MediaFlex KeyConnect Module Insert</b>			
2-port, Flush, bag of 10 pieces	AX102410	AX102411	AX102737
2-port, Angled, bag of 10 pieces	AX102412	AX101872	AX102735
<b>MediaFlex Filler Inserts</b>			
1 unit, bag of 10 pieces	AX101758	AX101759	AX101760
<b>MediaFlex Multimedia Insert, Copper</b>			
3-port RCA (Angled)	AX101878	AX101879	AX101880
SVHS Module (Angled)	AX101882	AX101883	AX101884
SVGA Module (IDC interface) (Angled)	AX101886	AX101887	AX101888
SVGA Feed Through (Angled)	AX102335	AX102336	AX102337
SVGA Feed Through, 3.5 mm Audio (Angled)	AX105158-AL	AX105158-EW	AX105158-BK
<b>MediaFlex Multimedia Insert, Fiber</b>			
Duplex SC Multimode	AX101940	AX101941	AX101942
Duplex SC Singlemode	AX101936	AX101937	AX101938
SC/APC Duplex	AX105638-AL	AX105638-EW	AX105638-BK

Contact Customer Service for other colors and configurations.

#### KeyConnect Adapters

Description	Belden Part Number		
	Almond	Elec. White	Black
LC Duplex OM3 (Aqua Adapter)	AX104937	AX104938	AX104939
LC Duplex OM4 (Erika Violet Adapter)	AX105641-AL	AX105641-EW	AX105641-BK
LC Duplex SM (Blue Adapter)	AX102419	AX102420	AX102421
LC Duplex SM/APC (Green Adapter)	AX105642-AL	AX105642-EW	AX105642-BK
SC Simplex OM3 (Aqua Adapter)	AX105643-AL	AX105643-EW	AX105643-BK
SC Simplex SM (Blue Adapter)	AX102686	AX102687	AX102688
SC/APC Simplex SM (Green Adapter)	AX105374-AL	AX105374-EW	AX105374-BK

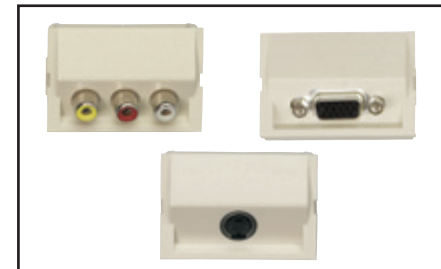
Refer to the Belden copper catalog for a larger selection of multimedia adapters.



MediaFlex Inserts for KeyConnect Modules: AX102410, Flush, 2-port, Almond and AX102412, Angled, 2-Port, Almond



AX101760, MediaFlex Filler Insert, 1-unit



AX101878, MediaFlex RCA Inserts, 3-port, Almond  
AX101882, MediaFlex SVHS Inserts, 1-port, Almond  
AX101886, MediaFlex SVGA Inserts, 1-port, Almond



AX101940, MediaFlex SC Duplex Multimode Insert, Almond



AX104939, KeyConnect Adapter, LC Duplex, OM3 (Aqua Adapter), Black

## FiberExpress Workstation Connectivity

### FX Multi Box (M-Box) and MDVO Multimedia Outlet Box

Strategically placed connectivity through overt design. Compact low-port count field-term or pre-term distributed consolidation points minimizing installation time by maximizing trunk capacity.

#### FASTER

- Faster installation with a variety of surface mount options

#### EASIER

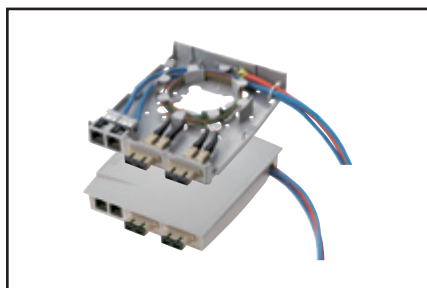
- Easier distribution of low port count connectivity and breakouts with self-contained designs
- Easier field-termination with easily accessible consolidation points

#### BETTER

- Better options for pre-term and field-term including splicing



FW3MBP06LD, FX M-Box Pre-Term, 6 x LC Duplex, 1 MPO-12(f), OM3



A0643206, MDVO Multimedia Outlet Box, shown here as terminated

#### FX Multi Box (M-Box)

Extremely compact, the feature rich M-Box is ideally suited for floor box and consolidation point applications. Supporting pre-terminated MPO-12(f) connectivity with an integrated fanout to LC, 1G and 10G Ethernet can be quickly deployed and re-deployed eliminating field termination. When the need arises additional versions of the M-Box are fully equipped to handle and protect field termination including both mechanical splice and pigtail fusion splicing techniques.

Description	Belden Part Number			
	OM3 Aqua	OM4 Erika Violet	OS2 Blue	OS2/APC Green
FX Multi-Box Pre-Term MPO-12(f) to 6 x LC Duplex	FW3MBP06LD	FW4MBP06LD	FWSMBP06LD	FWSMBP06LA
FX Multi-Box Field-Term	FW3MBS06LD	FW4MBS06LD	FWSMBS06LD	FWSMBS06LA

#### MDVO Multimedia Outlet Box

The MDVO Multimedia Outlet Box brings unique versatility for multimedia work area installations. The box design provides cable management and helps maintain cable bend radius. The low profile design and side-entry of the outlet box offers better protection for patch cords. The outlet box can accept up to six MDVO-style modules or three SC Duplex footprint adapters.

The MDVO Multimedia Outlet Box can be mounted directly on the wall or attached to standard electrical boxes. Included with the MDVO Multimedia box are three 1-port SC Duplex footprint mounting bezels and three 2-port MDVO adapters.

Description	Belden Part Number	
	Almond	Elec. White
MDVO Multimedia Outlet Box, 6-Port	A0643206	A0643207

\*See the Belden copper catalog for a larger selection.

Faster.  
Easier.  
Better.



## FiberExpress Workstation Connectivity (continued)

Multi-User Outlet Box, MDVO-Style Fiber Modules, and Duplex Footprint Fiber Adapters

### Multi-User Outlet Box

The Multi-User Outlet Box is a versatile box that can be used in many different applications. The outlet box can accommodate up to 24 connections of any type: UTP, fiber or coax. The outlet box is ideal for use as a multi-user telecommunications assembly, or simply as a high-density multimedia telecommunications outlet. The Multi-User Outlet Box can also be used as a wall mounted patch panel in confined areas, such as shallow rooms and cabinets.



AX100222, Multi-User Outlet Box (shown here with optional modules)

Description	Belden Part Number		
	Almond	Elec. White	Black
Multi-User Outlet Box, 24-MDVO Ports (Empty)	AX100220	AX100221	AX100222
Multi-User KeyConnect 12-Port Adapter Strip	-	-	AX104615

### MDVO-Style Fiber Modules

	Almond	Elec. White	Black
LC Duplex – OM3 (Aqua Adapter)	AX105696-AL	AX105696-EW	AX105696-BK
LC Duplex – SM (Blue Adapter)	AX102214	AX102215	AX102216
SC Simplex – OM3 (Aqua Adapter)	AX105697-AL	AX105697-EW	AX105697-BK
SC Simplex – SM (Blue Adapter)	AX104624-AL	AX104624-EW	AX104624-BK
SC/APC Simplex – SM (Green Adapter)	AX105698-AL	AX105698-EW	AX105698-BK
ST – Metal	AX105699-AL	AX105699-EW	AX105699-BK

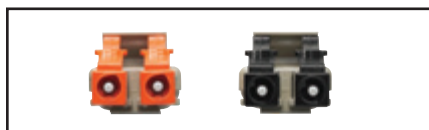
### Standard Duplex Footprint Fiber Adapters

Description	Belden Part Number			
	OM3 Aqua	OM4 Erika Violet	OS2 Blue	OS2/APC Green
SC Duplex, Flangeless	AX105691-B25	AX105692-B25	AX105002-B25	AX105646-B25
SC Duplex w/Shutters, Flangeless	-	-	AX105693-B25	AX105694-B25

Refer to the Belden copper catalog for a larger selection of workstation connectivity options.

## FiberExpress Secure/Keyed LC System

### FX Secure/Keyed LC System



FX Secure/Keyed LC System



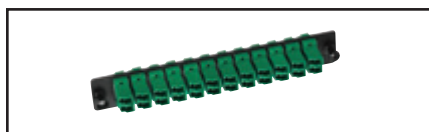
FX Brilliance Connectors



FX Secured/Keyed LC Ultra Cassette



FX Secure/Keyed LC Manager Module



FX Secure/Keyed LC Adapter Strip

The FX Secure/Keyed LC System allows for physical segregation of network segments in secure fiber cabling infrastructures. All Secure/Keyed LC products are available with 12 different keying options each carrying a different color to facilitate network administration. The keying detail inside the connector is highly tamper-resistant and cannot be reproduced inside a standard LC connector to violate the network security. All products comply with the FOCIS 10 standard and optical performance exceeds all industry standards for SFF connectors.

The Secure/Keyed LC Adapter Modules, Frames, Cassettes and Adapter Strips can be used in all mounting hardware for workstation area, Consolidation Point or Telecom Room applications. The Secure/Keyed LC FX Manager Modules can be used in 19- and 23-inch FX Manager Shelves to provide a high-density management system.

The Secure/Keyed LC FX Ultra Frames and Cassettes can be used with the FX UHD Rack and FX Ultra Wall-mount Patch Panels to provide an Ultra high-density patching system that is easy to deploy, operate and maintain, while ensuring maximum uptime, uninterrupted availability and superior performance.

The Secure/Keyed LC Patch Cords and Pigtailed are offered in Multimode 62.5  $\mu\text{m}$  (OM1), laser-optimized 50  $\mu\text{m}$  (OM3 and OM4) and Singlemode (OS2) for the most demanding network performance.

The Secure/Keyed LC Brilliance Universal Field Installable Connectors are available in Multimode 50  $\mu\text{m}$  laser-optimized (OM4, OM3 compatible) and Singlemode (OS2) fiber versions.

### FX Secure/Keyed LC System

Description	Splices
LC Key1	Red
LC Key2	Green
LC Key3	Yellow
LC Key4	Black
LC Key5	Orange
LC Key6	Blue
LC Key7	Violet
LC Key8	Rose
LC Key9	Aqua
LC KeyA	Brown
LC KeyB	Slate
LC KeyC	White

For additional details, please refer to the Secure/Keyed LC System Product Bulletin PB275.



Faster.  
Easier.  
Better.



## FiberExpress Optic Cables

### Introduction

The optical fiber cables featured in this section have been expanded to meet advances in technology and the demands of both commercial and industrial applications. Refer to this page for selecting a fiber type, color coding information, and optical specifications. Belden's extensive line of indoor and outdoor cable products is offered in tight buffer and loose tube designs. Armored, burial, and ruggedized designs are suited to a host of industrial environments. For each product design, items for OM1, OM2, OM3, OM4, and OS2 (Singlemode) items have been developed. Belden fiber products are third party tested by either ETL or UL and approved for use according to the National Electric Code.

### Customer Service

Many fiber designs are available from stock through our Distributors. For your new or custom application that you do not locate in this section, contact Customer Service at 1-800-Belden-1 (800.235.3361) for additional information or to request a quote. Further product and technical information is also available on our web site at [www.belden.com](http://www.belden.com).



### Cable Selection Guide

#### Jacket Color Chart

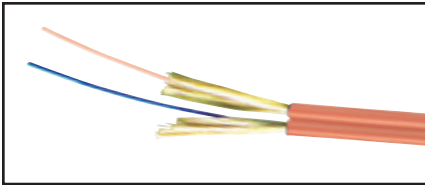
Cable Type	Jacket Color
<b>Indoor Cables: Interconnect, Breakout, Distribution and Tray Optic</b>	
OM1 & OM2	Orange
OM3	Aqua
OM4 (Standard)	Aqua
OM4 (Optional)	Erika Violet
OS2	Yellow
<b>Indoor/Outdoor &amp; Outdoor Cables: Distribution, Loose Tube, OSP</b>	
OM1, OM2, OM3, OM4, OS2	Black
<b>Specialty Cables: Tactical</b>	
OM1, OM2, OM3, OM4, OS2	Black

See page 4, FX Systems chart for technical performance.

The part numbers in the following pages represent standard fiber cables, many more constructions are available, please contact your Belden representative for more information.

## FiberExpress Interconnect Cables

### Tight Buffer – Riser & Plenum Rated



Duplex Optical Fiber Interconnect Cable

Supple and compact yet undoubtedly resilient. Small form factor FX interconnect cables provide the right combination of flexibility, small size and robustness needed to withstand the rigours of daily patching without sacrificing density.

#### Applications:

- Patching
- Inside Cabinets
- Workstation Equipment Connections

### Specifications

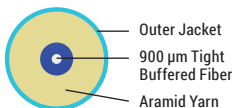
#### Bend Radius (vs. Cable OD)

Installation	15 x OD
Operation	10 x OD

#### Temperature Range

Storage	-40°C to 70°C (-40°F to 158°F)
Installation (Plenum/LSZH)	0°C to 60°C (32°F to 140°F)
Installation (Riser)	-10°C to 60°C (14°F to 140°F)
Operation (Plenum/LSZH)	0°C to 70°C (32°F to 158°F)
Operation (Riser)	-20°C to 70°C (-4°F to 158°F)

### Legend



### Compliance

- TIA/EIA-568-C.3
- ISO/IEC 11801, 2nd Edition
- Telcordia GR-409-CORE
- RoHS II 2011/65/EU
- REACH EC1907-2006
- NEC/CEC OFNR/OFN FT.4 (RISER - PVC)
- NEC/CEC OFNR/OFN FT.4 (LSZH - FRPE)
- NEC/CEC OFNP/OFN FT.6 (PLENUM - PVC or PVDF)

Description	Construction	Fiber Count	Fiber	Sub-Unit OD	Cable OD		Weight		Tensile Strength			
					mm	in.	Kg/km	lb/1000 ft.	Operation		Installation	
Simplex		1	900 µm TB	N/A	2.0	0.08	4	3	66	15	220	50
		1			2.9	0.11	7	5				
Duplex Zip		2	900 µm TB	N/A	2.0 x 4.0	0.08 x 0.16	7	5	66	15	220	50
		2			2.9 x 5.8	0.11 x 0.22	16	11				

### Standard Configurations

Fiber Count	Belden Part Number			
	OM1 Orange	OM3 Aqua	OM4 Aqua	OS2 Yellow
<b>Simplex 2.0 mm - Riser</b>				
1	F11001RB	F13001RB	F14001RBA	F15001RB
<b>Simplex 2.9 mm - Riser</b>				
1	B97112	B9C001	B9E001	B9W001
<b>Duplex 2.0 mm - Riser</b>				
2	F11002RB	F13002RB	F14002RBA	F15002RB
<b>Duplex 2.9 mm - Riser</b>				
2	B96915	B9C002	B9E002	B9W002

For an exhaustive selection contact Belden customer service or your local Belden Representative for more details.

Faster.  
Easier.  
Better.



## FiberExpress Breakout Cables

Tight Buffer – Indoor Riser, Plenum & LSZH Rated

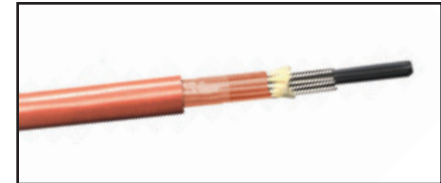
Robust terminations in demanding environments. All the ease of 900 μm tight buffered termination with only one fiber per sub-unit enables the ultimate bond between the connector and the cables' Aramid yarns resulting in unmatched strength and durability.

### Applications:

- Horizontal distribution for Fiber-to-the-desk
- In-building backbone
- Factory floor automation
- Broadcast and A/V in-building installations

### Additional Options

- 2.5 mm and 2.9 mm Subunits
- MSHA (Mining) Approvals



Optical Fiber Breakout Cable

Description	Construction	Fiber Count	Fiber	Sub-Unit OD	Cable OD		Weight		Tensile Strength				
					mm	mm	in.	Kg/km	lb/1000 ft.	Operation		Installation	
										N	lbs-f	N	lbs-f
Color-coded Sub-Units		2	900 μm TB	2.0	6.6	0.26	36	24	400	90	800	180	
		4	900 μm TB	2.0	8.2	0.32	52	35	755	170	1535	345	
		6	900 μm TB	2.0	9.1	0.36	80	54	1025	230	2070	465	
		8			10.3	0.41	103	69	1335	300	2670	600	
		10			11.6	0.46	128	86					
12	13.1	0.51			164	110							
High-Count Non-Color-coded Sub-Units		18	900 μm TB	2.0	15.7	0.62	305	205	1335	300	2670	600	

Above specifications provide a general representation for the product family. Improved specifications may exist for Riser, Plenum or LSZH constructions. Consult individual technical data sheets for exact specifications.

## Specifications

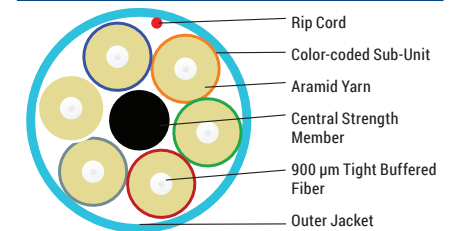
### Bend Radius (vs. Cable OD)

Installation	15 x OD
Operation	10 x OD

### Temperature Range

Storage	-40°C to 70°C (-40°F to 158°F)
Installation (Plenum/LSZH)	0°C to 60°C (32°F to 140°F)
Installation (Plenum/LSZH)	0°C to 60°C 32°F to 140°F
Installation (Riser)	-10°C to 60°C (14°F to 140°F)
Operation (Plenum/LSZH)	0°C to 70°C (32°F to 158°F)
Operation (Riser)	-20°C to 70°C (-4°F to 158°F)

## Legend



## Standard Configurations

Fiber Count	Belden Part Number			
	OM1 Orange	OM3 Aqua	OM4 Aqua	OS2 Yellow
<b>Plenum</b>				
2	B9B013	B9C013	B9E013	B9W013
4	B9B014	B9C014	B9E014	B9W014
6	B9B015	B9C015	B9E015	B9W015
12	B9B018	B9C018	B9E018	B9W018
<b>LSZH/Riser</b>				
2	B9B130	B9C130	B9E130	B9W130
4	B9B131	B9C131	B9E131	B9W131
6	B9B132	B9C132	B9E132	B9W132
12	B9B135	B9C135	B9E135	B9W135

For an exhaustive selection contact Belden customer service or your local Belden Representative for more details.

## Compliance

- TIA/EIA-568-C.3
- ISO/IEC 11801, 2nd Edition
- Telcordia GR-409-CORE
- RoHS II 2011/65/EU
- REACH EC1907-2006
- NEC/CEC OFNR/OFN FT.4 (RISER - PVC)
- NEC/CEC OFNR/OFN FT.4 (LSZH - FRPE)
- NEC/CEC OFNP/OFN FT.6 (PLENUM - PVC or PVDF)

## FiberExpress Distribution Cables

Tight Buffer – Indoor Riser & Plenum Rated

Fast installation, easy termination. Sub-unitized cables provide easy routing and 900 µm tight-buffered fiber supporter fast and robust field-termination.

### Applications:

- Horizontal distribution for Fiber-to-the-desk
- In-building backbone
- Factory floor automation
- Data Center EDA areas

### Additional Options

- MSHA (Mining) Approvals

### Indoor Specifications

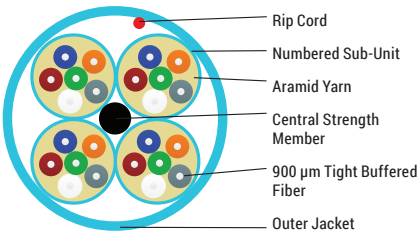
#### Bend Radius (vs. Cable OD)

Installation	15 x OD
Operation	10 x OD

#### Temperature Range

Storage	-40°C to 70°C (-40°F to 158°F)
Installation (Plenum/LSZH)	0°C to 60°C (32°F to 140°F)
Installation (Riser)	-10°C to 60°C (14°F to 140°F)
Operation (Plenum/LSZH)	0°C to 70°C (32°F to 158°F)
Operation (Riser)	-20°C to 70°C (-4°F to 158°F)

### Legend



### Compliance

- TIA/EIA-568-C.3
- ISO/IEC 11801, 2nd Edition
- Telcordia GR-409-CORE
- RoHS II 2011/65/EU
- REACH EC1907-2006
- NEC/CEC OFNR/OFN FT.4 (RISER - PVC)
- NEC/CEC OFNR/OFN FT.4 (LSZH - FRPE)
- NEC/CEC OFNP/OFN FT.6 (PLENUM - PVC or PVDF)

Description	Construction	Fiber Count	Fiber	Sub-Unit OD	Cable OD		Weight		Tensile Strength			
					mm	in.	Kg/km	lb/1000 ft.	Operation		Installation	
									N	lbs-f	N	lbs-f
Non-Unitized		2	900 µm TB	N/A	4.8	0.19	22	15	222	50	556	125
		4	900 µm TB	N/A	4.8	0.19	25	17	222	50	556	125
	6	31					21					
	8	36					24					
	10	39					26					
	12	43					29					
16	64	43	556	125	1112	250						
24	80	54										
Unitized 6-Fiber Sub-Units		24	900 µm TB	4.5	13.1	0.52	145	97	1001	225	2002	450
		36	16.0		0.63	221	148	1668	375	3336	750	
Unitized 12-Fiber Sub-Units		36	900 µm TB	5.5	14.1	0.56	162	109	1001	225	2002	450
		48			15.5	0.61	207	139	1423	320	2847	640
		72			19.0	0.75	321	216	2002	450	4226	950
		96			22.8	0.90	536	360	2780	625	5560	1250
		144			25.4	1.00	602	404	4226	950	8452	1900

Above specifications provide a general representation for the product family. Improved specifications may exist for Riser, Plenum or LSZH constructions. Consult individual technical data sheets for exact specifications.

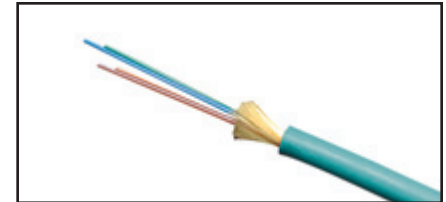
Faster.  
Easier.  
Better.



**FiberExpress Distribution Cables** (continued)  
Tight Buffer – Indoor Riser & Plenum Rated

**Standard Indoor Configurations**

Fiber Count	Belden Part Number			
	OM1 Orange	OM3 Aqua	OM4 Aqua	OS2 Yellow
<b>Non-unitized - Riser</b>				
2	B9B037	B9C037	B9E037	B9W037
6	B9B039	B9C039	B9E039	B9W039
12	B9B042	B9C042	B9E042	B9W042
24	B9B601	B9C601	B9E601	B9W601
<b>Non-unitized - Plenum</b>				
2	B9B043	B9C043	B9E043	B9W043
6	B9B045	B9C045	B9E045	B9W045
12	B9B048	B9C048	B9E048	B9W048
24	B9B611	B9C611	B9E611	B9W611
<b>Unitized 6-Fiber Sub-Units - Riser</b>				
24	B9B602	B9C602	B9E602	B9W602
<b>Unitized 6-Fiber Sub-Units - Plenum</b>				
24	B9B612	B9C612	B9E612	B9W612
<b>Unitized 12-Fiber Sub-Units - Plenum</b>				
48	-	B9C616	B9E616	B9W616
72	-	B9C620	B9E620	B9W620
96	-	B9C623	B9E623	B9W623
144	-	B9C621	B9E621	B9W621



Optical Fiber Distribution Cable

For an exhaustive selection contact Belden customer service or your local Belden Representative for more details.

## FiberExpress Distribution Cables (continued) Tight Buffer – Indoor/Outdoor Riser, Plenum & LSZH Rated

### Indoor/Outdoor Specifications

- Environmental Protection
  - UV Resistant Jacket
  - Moisture Resistant Jacket
  - Fungus Resistant Jacket
  - Water Blocking Aramid
  - Water Blocking Tape

### Additional Options

- MSHA (Mining) Approvals

### Indoor/Outdoor Specifications

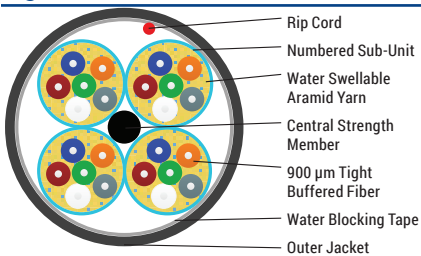
#### Bend Radius (vs. Cable OD)

Installation	20 x OD
Operation	10 x OD

#### Temperature Range

Storage	-40°C to 70°C (-40 to 158°F)
Installation	-20 to 70°C (-4 to 158°F)
Operation	-40 to 70°C (-40 to 158°F)

### Legend



### Compliance

- TIA/EIA-568-C.3
- ISO/IEC 11801, 2nd Edition
- Telcordia GR-20-CORE
- RoHS II 2011/65/EU
- REACH EC1907-2006
- NEC/CEC OFNR/OFN FT.4 (RISER - PVC)
- NEC/CEC OFNR/OFN FT.4 (LSZH - FRPE)
- NEC/CEC OFNP/OFN FT.6 (PLENUM - PVC or PVDF)

Description	Construction	Fiber Count	Fiber	Sub-Unit OD	Cable OD		Weight		Tensile Strength			
					mm	in.	Kg/km	lb/1000 ft.	Operation		Installation	
									N	lbs-f	N	lbs-f
Non-Unitized		2	900 μm TB	N/A	4.8	0.19	22	15	222	50	556	125
		4	900 μm TB	N/A	4.8	0.19	25	17	222	50	556	125
		6					31	21				
		8			5.8	0.23	36	24	334	75	667	150
		10					39	26				
		12					43	29				
16	8.8	0.35	64	43	556	125	1112	250				
24			80	54								
Unitized 6-Fiber Sub-Units		24	900 μm TB	4.5	13.1	0.52	145	97	1001	225	2002	450
		36			16.0	0.63	221	148	1668	375	3336	750
Unitized 12-Fiber Sub-Units		36	900 μm TB	5.5	14.1	0.56	162	109	1001	225	2002	450
		48			15.5	0.61	207	139	1423	320	2847	640
		72			19.0	0.75	321	216	2002	450	4226	950
		96			22.8	0.90	536	360	2780	625	5560	1250
		144			25.4	1.00	602	404	4226	950	8452	1900

Above specifications provide a general representation for the product family. Improved specifications may exist for Riser, Plenum or LSZH constructions. Consult individual technical data sheets for exact specifications.

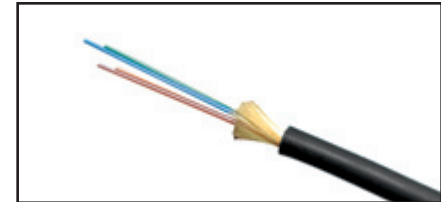
Faster.  
Easier.  
Better.



**FiberExpress Distribution Cables** (continued)  
Tight Buffer – Indoor/Outdoor Riser, Plenum & LSZH Rated

**Standard Indoor/Outdoor Configurations**

Fiber Count	Belden Part Number			
	OM1 Black	OM3 Black	OM4 Black	OS2 Black
<b>Non-terminated - Riser/LSZH</b>				
2	B9B100	B9C100	B9E100	B9W100
6	B9B102	B9C102	B9E102	B9W102
12	B9B104	B9C104	B9E104	B9W104
24	B9B107	B9C107	B9E107	B9W107
<b>Non-terminated - Riser</b>				
2	B9B037T	B9C037T	B9E037T	B9W037T
6	B9B039T	B9C039T	B9E039T	B9W039T
12	B9B042T	B9C042T	B9E042T	B9W042T
24	B9B601T	B9C601T	B9E601T	B9W601T
<b>Non-terminated - Plenum</b>				
2	B9B043T	B9C043T	B9E043T	B9W043T
6	B9B045T	B9C045T	B9E045T	B9W045T
12	B9B048T	B9C048T	B9E048T	B9W048T
24	B9B611T	B9C611T	B9E611T	B9W611T
<b>Unitized 6-Fiber Sub-Units - Riser/LSZH, Riser</b>				
24	B9B602T	B9C602T	B9E602T	B9W602T
<b>Unitized 6-Fiber Sub-Units - Plenum</b>				
24	B9B612T	B9C612T	B9E612T	B9W612T
<b>Unitized 12-Fiber Sub-Units - Riser/LSZH</b>				
48	B9B112	B9C112	B9E112	B9W112
72	B9B114	B9C114	B9E114	B9W114
96	B9B116	B9C116	B9E116	B9W116
144	B9B120	B9C120	B9E120	B9W120
<b>Unitized 12-Fiber Sub-Units - Plenum</b>				
48	B9B616T	B9C616T	B9E616T	B9W616T
72	B9B620T	B9C620T	B9E620T	B9W620T
96	B9B623T	B9C623T	B9E623T	B9W623T
144	B9B621T	B9C621T	B9E621T	B9W621T



Optical Fiber Distribution Cable, Indoor/Outdoor

For an exhaustive selection contact Belden customer service or your local Belden Representative for more details.

## FiberExpress Armored Distribution Cables

Tight Buffer – Indoor, Riser and Plenum Rated

Heightened Protection with simple termination. Augmenting the easy termination of Distribution cable with interlocking armor to provide an elevated resistance to cutting, crushing and the gnawing of rodents all while eliminating the additional expense of innerduct.

### Applications:

- Campus/Inter Building
- Telecom Trunks
- Industrial
- Rugged Environments

### Indoor Specifications

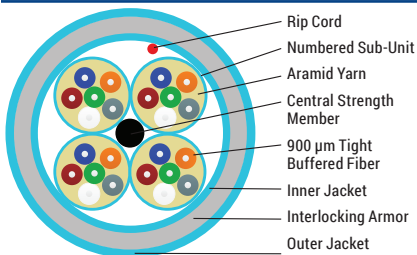
#### Bend Radius (vs. Cable OD)

Installation	20 x OD
Operation	15 x OD

#### Temperature Range

Storage	-40°C to 70°C (-40°F to 158°F)
Installation (Plenum/LSZH)	0°C to 60°C (32°F to 140°F)
Installation (Riser)	-10°C to 60°C (14°F to 140°F)
Operation (Plenum/LSZH)	0°C to 70°C (32°F to 158°F)
Operation (Riser)	-20°C to 70°C (-4°F to 158°F)

### Legend



Description	Construction	Fiber Count	Fiber	Sub-Unit OD	Cable OD		Weight		Tensile Strength			
					mm	in.	Kg/km	lb/1000 ft.	Operation		Installation	
									N	lbs-f	N	lbs-f
Non-Unitized		6	900 µm TB	N/A	14.5	0.57	189	127	360	81	1201	270
		12			15.7	0.62	150	223	400	90	1334	300
		24			17.0	0.67	335	225				
Unitized 6-Fiber Sub-Units		24	900 µm TB	4.5	21.5	0.85	391	263	890	200	2700	600
		36			25.3	1.00	548	368				
Unitized 12-Fiber Sub-Units		48	900 µm TB	5.5	24.6	0.97	540	363	890	200	2700	600
		72			27.8	1.09	716	481				
		96			32.5	1.28	930	625				
		144			35.6	1.40	1005	675				

Above specifications provide a general representation for the product family. Improved specifications may exist for Riser, Plenum or LSZH constructions. Consult individual technical data sheets for exact specifications.

### Compliance

- TIA/EIA-568-C.3
- ISO/IEC 11801, 2nd Edition
- Telcordia GR-409-CORE
- RoHS II 2011/65/EU
- REACH EC1907-2006
- NEC/CEC OFNR/OFN FT.4 (RISER - PVC)
- NEC/CEC OFNR/OFN FT.4 (LSZH - FRPE)
- NEC/CEC OFNP/OFN FT.6 (PLENUM - PVC or PVDF)



Faster.  
Easier.  
Better.

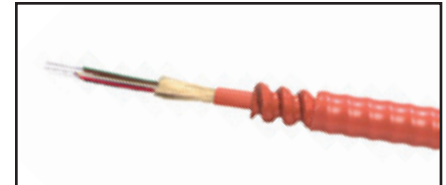


**FiberExpress Armored Distribution Cables** (continued)  
Tight Buffer – Indoor Riser & Plenum Rated

**Standard Indoor Configurations**

Fiber Count	Belden Part Number			
	OM1 Orange	OM3 Aqua	OM4 Aqua	OS2 Yellow
<b>Non-unitized - Riser</b>				
6	B9B230	B9C230	B9E230	B9W230
12	B9B231	B9C231	B9E231	B9W231
24	B9B233	B9C233	B9E233	B9W233
<b>Non-unitized - Plenum</b>				
6	B9B240	B9C240	B9E240	B9W240
12	B9B241	B9C241	B9E241	B9W241
24	B9B242	B9C242	B9E242	B9W242
<b>Unitized 6-Fiber Sub-Units - Plenum</b>				
24	B9B243	B9C243	B9E243	B9W243
<b>Unitized 12-Fiber Sub-Units - Plenum</b>				
48	B9B245	B9C245	B9E245	B9W245
72	B9B246	B9C246	B9E246	B9W246
96	B9B247	B9C247	B9E247	B9W247
144	B9B248	B9C248	B9E248	B9W248

For an exhaustive selection contact Belden customer service or your local Belden Representative for more details.



Armored Optical Fiber Distribution Cable

## FiberExpress Armored Distribution Cables

Tight Buffer – Indoor/Outdoor, Riser and Plenum Rated

### Indoor/Outdoor Specifications

- Environmental Protection
  - UV Resistant Jacket
  - Moisture Resistant Jacket
  - Fungus Resistant Jacket
  - Water Blocking Aramid
  - Water Blocking Tape

### Additional Options

- MSHA (Mining) Approvals

### Indoor/Outdoor Specifications

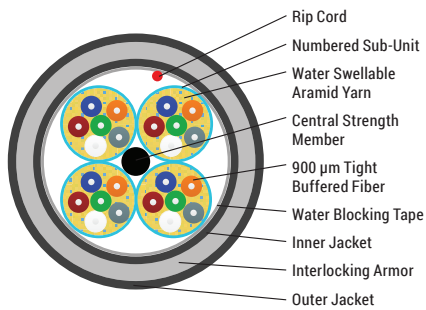
#### Bend Radius (vs. Cable OD)

Installation	20 x OD
Operation	15 x OD

#### Temperature Range

Storage	-40°C to 70°C (-40°F to 158°F)
Installation	-20°C to 70°C (-4°F to 158°F)
Operation	-40°C to 70°C (-40°F to 158°F)

### Legend



Description	Construction	Fiber Count	Fiber	Sub-Unit OD	Cable OD		Weight		Tensile Strength			
					mm	in.	Kg/km	lb/1000 ft.	Operation		Installation	
									N	lbs-f	N	lbs-f
Non-Unitized		6	900 µm TB	N/A	14.5	0.57	189	127	360	81	1201	270
		12			15.7	0.62	150	223	400	90	1334	300
		24			17.0	0.67	335	225				
Unitized 6-Fiber Sub-Units		24	900 µm TB	4.5	21.5	0.85	391	263	890	200	2700	600
		36			25.3	1.00	548	368				
Unitized 12-Fiber Sub-Units		48	900 µm TB	5.5	24.6	0.97	540	363	890	200	2700	600
		72			27.8	1.09	716	481				
		96			32.5	1.28	930	625				
		144			35.6	1.40	1005	675				

Above specifications provide a general representation for the product family. Improved specifications may exist for Riser, Plenum or LSZH constructions. Consult individual technical data sheets for exact specifications.

### Compliance

- TIA/EIA-568-C.3
- ISO/IEC 11801, 2nd Edition
- Telcordia GR-20-CORE
- RoHS II 2011/65/EU
- REACH EC1907-2006
- NEC/CEC OFNR/OFN FT.4 (RISER - PVC)
- NEC/CEC OFNR/OFN FT.4 (LSZH - FRPE)
- NEC/CEC OFNP/OFN FT.6 (PLENUM - PVC or PVDF)

Faster.  
Easier.  
Better.



**FiberExpress Armored Distribution Cables** (continued)  
Tight Buffer – Indoor/Outdoor Riser & Plenum Rated

**Standard Indoor/Outdoor Configurations**

Fiber Count	Belden Part Number			
	OM1 Black	OM3 Black	OM4 Black	OS2 Black
<b>Non-unitized - Riser</b>				
6	B9B230T	B9C230T	B9E230T	B9W230T
12	B9B231T	B9C231T	B9E231T	B9W231T
24	B9B233T	B9C233T	B9E233T	B9W233T
<b>Non-unitized - Plenum</b>				
6	B9B240T	B9C240T	B9E240T	B9W240T
12	B9B241T	B9C241T	B9E241T	B9W241T
24	B9B242T	B9C242T	B9E242T	B9W242T
<b>Unitized 6-Fiber Sub-Units - Plenum</b>				
24	B9B243T	B9C243T	B9E243T	B9W243T
<b>Unitized 12-Fiber Sub-Units - Plenum</b>				
48	B9B245T	B9C245T	B9E245T	B9W245T
72	B9B246T	B9C246T	B9E246T	B9W246T
96	B9B247T	B9C247T	B9E247T	B9W247T
144	B9B248T	B9C248T	B9E248T	B9W248T

For an exhaustive selection contact Belden customer service or your local Belden Representative for more details.

## FiberExpress Brilliance Tactical Cables

### Tight Buffer - Outdoor



Unprecedented flexibility coupled with high crush resistance. Military inspired Tactical cables provide the utmost durability for repeated deployment and retrieval in severe environments.

#### Applications

- ENG Vehicles
- Outdoor news, sporting and other events
- Digital Camera Interconnect
- Re-deployable communications
- Industrial and Automation

#### Brilliance Maxi-Bend Specifications

- Environmental Protection
  - UV Resistant Jacket

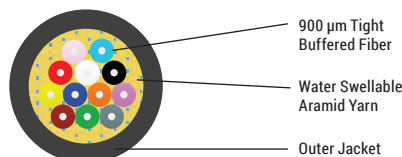
#### Specifications

Cycle Flexing (cycles/min)	2000
Crush Resistance (N/cm)	400
Impact Resistance (@ 2.2N-m)	200
<b>Bend Radius (vs. Cable OD)</b>	
Installation	15 x OD
Operation	8 x OD

#### Temperature Range

Storage	-70°C to +85°C (-94°F to 185°F)
Operation/Installation	-55°C to 85°C (-67°F to 185°F)

#### Legend



#### Compliance

- TIA/EIA-455-41 (Crush)
- TIA/EIA-455-25 (Impact)
- TIA/EIA-455-104 (Cyclic Flexing)
- RoHs II 2011/65/EU
- REACH EC1907-2006

Description	Construction	Fiber Count	Fiber	Sub-Unit OD	Cable OD		Weight		Tensile Strength			
					mm	in.	Kg/km	lb/1000 ft.	Operation		Installation	
									N	lbs-f	N	lbs-f
Non-Unitized		2	900 µm TB	N/A	6.1	0.24	33	22	667	150	1468	330
		4			7.1	0.28	37	25				
		6										
		8										
12												

#### Standard Brilliance Maxi-Bend Configurations

Fiber Count	Belden Part Number	
	OM1 Black	OS2 Black
2	B96571	B96566
4	B96551	B96639
6	B96572	B96567
12	B96575	B96570

For an exhaustive selection contact Belden customer service or your local Belden Representative for more details.

Faster.  
Easier.  
Better.



## Single Jacket, All Dielectric Loose Tube Cables

Loose Tube – Outdoor, and Indoor/Outdoor Riser & LSZH Rated

Gel-filled buffer tube prevents water migration. All-dielectric strength member. Available as Riser rated cable, thereby eliminating the need for service entrance splicing to in-building cable. Full dielectric construction, no grounding required. Available with up to 216 fibers. Length markings in meters for easy determination of cable length.

### Applications

- Medium to high fiber count requirements
- Inter-building duct installations
- Lashed aerial
- Indoor/outdoor
- Industrial outside plant (OSP Type)

### Jacket Specifications

#### Jacket Material

Outdoor PE  
Riser PVC

Buffer Tube PBT

Strength Member Aramid Yarn

Central Strength Member E-Glass

Color Code (Buffer) Per TIA/EIA 598-B,  
See page 4

Jacket Color Black

### Ratings

#### Riser

UL Type OFNR  
cUL Type OFN FT.4  
Flame Resistance UL 1666

### Specifications

#### Temperature Range (Outdoor Series)

Storage -40°C to 75°C  
Operating -40°C to 70°C

#### Temperature Range (Riser Series)

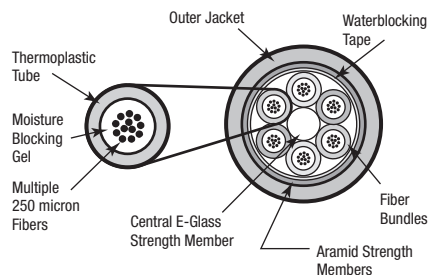
Storage -40°C to 75°C  
Operating -40°C to 70°C

#### Min. Bend Radius

Installation 20 x OD  
Long Term 15 x OD

Optical Specifications See page 4

### Legend

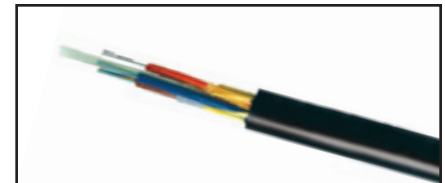


### Compliance

- TIA/EIA-568-C.3
- ICEA S-87-640

### Functional Requirements

- GR-20-CORE
- GR-409-CORE



Single Jacket, All Dielectric Optical Fiber Cable

## Single Jacket, All Dielectric Loose Tube Cables (continued) Loose Tube – Outdoor, and Indoor/Outdoor Riser Rated

### Loose Tube Series



No. of Fibers	No. of Fibers Per Bundle	Belden Part Number					Outside Diameter		Weight		Max. Install Load	
		OM1 62.5 / 125 μm Std. / 1 Gb	OM2 50 / 125 μm Std. / 1 Gb	OM3 50 / 125 μm 10 Gb – 300 m	OM4 50 / 125 μm 10 Gb – 550 m	OS2 Singlemode Enhanced	Inch	mm	lb/1000 ft	kg/km	lb	N
<b>Outdoor</b>												
6	6	B9B510T	B9A510T	B9C510T	B9E510T	B9W510T	0.41	10.5	56	84	600	2700
12	12	B9B511T	B9A511T	B9C511T	B9E511T	B9W511T	0.41	10.5	56	84	600	2700
24	12	B9B500T	B9A500T	B9C500T	B9E500T	B9W500T	0.41	10.5	57	85	600	2700
36	12	B9B502T	B9A502T	B9C502T	B9E502T	B9W502T	0.41	10.5	58	86	600	2700
48	12	B9B505T	B9A505T	B9C505T	B9E505T	B9W505T	0.41	10.5	59	87	600	2700
72	12	B9B507T	B9A507T	B9C507T	B9E507T	B9W507T	0.45	11.5	71	106	600	2700
96	12	B9B513T	B9A513T	B9C513T	B9E513T	B9W513T	0.52	13.2	91	136	600	2700
144	12	B9B509T	B9A509T	B9C509T	B9E509T	B9W509T	0.67	17.0	148	220	600	2700
216	12	B9B520T	B9A520T	B9C520T	B9E520T	B9W520T	0.69	17.4	150	224	600	2700
<b>Riser (NEC/CEC OFNR/OFN FT.4) Indoor/Outdoor</b>												
6	6	B9B810	B9A810	B9C810	B9E810	B9W810	0.51	12.9	107	157	600	2700
12	12	B9B811	B9A811	B9C811	B9E811	B9W811	0.51	12.9	108	160	600	2700
24	12	B9B812	B9A812	B9C812	B9E812	B9W812	0.51	12.9	108	161	600	2700
36	12	B9B813	B9A813	B9C813	B9E813	B9W813	0.51	12.9	109	162	600	2700
48	12	B9B814	B9A814	B9C814	B9E814	B9W814	0.51	12.9	110	164	600	2700
72	12	B9B815	B9A815	B9C815	B9E815	B9W815	0.54	13.7	128	190	600	2700
96	12	B9B816	B9A816	B9C816	B9E816	B9W816	0.61	15.5	159	237	600	2700
144	12	B9B817	B9A817	B9C817	B9E817	B9W817	0.76	19.3	243	361	600	2700

Alternative fiber counts are available.



### Loose Tube Indoor/Outdoor Fiber Optic Cable

No. of Fibers	No. of Fibers Per Bundle	Belden Part Number					Outside Diameter		Weight		Max. Install Load	
		OM1 62.5 / 125 μm Std. / 1 Gb	OM2 50 / 125 μm Std. / 1 Gb	OM3 50 / 125 μm 10 Gb – 300 m	OM4 50 / 125 μm 10 Gb – 550 m	OS2 Singlemode Enhanced	Inch	mm	lb/1000 ft	kg/km	lb	N
<b>LSZH (NEC/CEC OFNR/OFN FT.4) Indoor/Outdoor</b>												
6	6	B9B830	B9A830	B9C830	B9E830	B9W830	0.38	9.65	71	105	600	2700
12	12	B9B831	B9A831	B9C831	B9E831	B9W831	0.38	9.65	71	105	600	2700
24	12	B9B832	B9A832	B9C832	B9E832	B9W832	0.38	9.65	71	105	600	2700
36	12	B9B833	B9A833	B9C833	B9E833	B9W833	0.38	9.65	62	92	600	2700
48	12	B9B834	B9A834	B9C834	B9E834	B9W834	0.48	12.18	101	151	600	2700

Faster.  
Easier.  
Better.



## Single Jacket, All Dielectric Loose Tube Cables (continued)

### Loose Tube – (Gel-free) Indoor/Outdoor Plenum Rated

Dry waterblocking technology used within tubes and under jacket. Available as Plenum rated cable, thereby eliminating the need for service entrance splicing to in-building cable. Small diameter and bend radius facilitate installation in tight spaces. Full dielectric construction, no grounding required. Available with up to 144 fibers. Fibers grouped into sets of 12 for maximum density. Length markings in meters for easy determination of cable length.

#### Applications

- Medium to high fiber count requirements
- Inter-building duct installations
- Lashed aerial
- Indoor/outdoor
- Campus backbones
- Data Centers
- High Density Cable Trays

#### Jacket Specifications

##### Jacket Material

Non-unitized  
Unitized

Thermoplastic  
PVDF-Copolymer

##### Buffer Tube

Thermoplastic

##### Strength Member

E-Glass and  
Aramid Yarn

##### Central Strength Member

Upjacketed

##### Color Code (Fiber)

Per TIA/EIA 598-B,  
See page 4

##### Jacket Color

Black

#### Ratings

##### Plenum

UL Type	OFNP
cUL Type	OFN FT.6
Flame Resistance	NFPA 262

#### Specifications

##### Temperature Range

Storage	-40°C to 80°C
Operating	-40°C to 70°C
Installation	0°C to 60°C

##### Cyclic Flexing

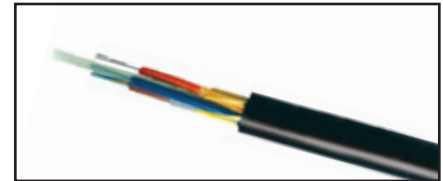
(EIA-455-104) 2000 cycles, min.

##### Min. Bend Radius

Installation	20 x OD
Long Term	15 x OD

##### Optical Specifications

See page 4



Single Jacket, All Dielectric Optical Fiber Cable

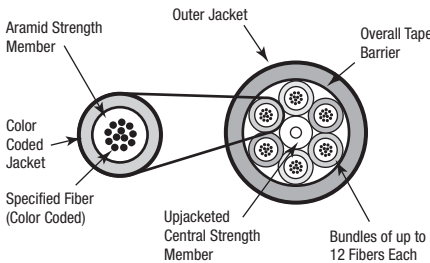
#### Compliance

- TIA/EIA-568-C.3
- ICEA S-104-696

#### Functional Requirements

- GR-20-CORE
- GR-409-CORE

#### Legend



#### Loose Tube Series

No. of Fibers	No. of Fibers Per Bundle	Belden Part Number					Outside Diameter		Weight		Max. Install Load	
		OM1 62.5 / 125 μm Std. / 1 Gb	OM2 50 / 125 μm Std. / 1 Gb	OM3 50 / 125 μm 10 Gb – 300 m	OM4 50 / 125 μm 10 Gb – 550 m	OS2 Singlemode Enhanced	Inch	mm	lb/1000 ft	kg/km	lb	N
<b>Plenum (NEC/CEC OFNP/OFN FT.6) Indoor/Outdoor</b>												
6	6	B9B202	B9A202	B9C202	B9E202	B9W202	0.265	6.70	33	49	320	1423
12	12	B9B204	B9A204	B9C204	B9E204	B9W204	0.265	6.70	33	49	320	1423
24	12	B9B205	B9A205	B9C205	B9E205	B9W205	0.359	9.12	47	70	405	1801
36	12	B9B206	B9A206	B9C206	B9E206	B9W206	0.359	9.12	47	70	405	1801
48	12	B9B207	B9A207	B9C207	B9E207	B9W207	0.359	9.12	48	71	405	1801
72	12	B9B209	B9A209	B9C209	B9E209	B9W209	0.429	10.90	72	107	600	2700
96	12	B9B211	B9A211	B9C211	B9E211	B9W211	0.501	12.73	102	152	600	2700
144	12	B9B215	B9A215	B9C215	B9E215	B9W215	0.665	16.89	191	284	600	2700

Alternative fiber counts and hybrid constructions are available.

## Double Jacket, Armored Loose Tube Cables (OSP Type)

Loose Tube – Outdoor, and Indoor/Outdoor Riser Rated



Double Jacket Armored Cable

Gel-filled buffer tube prevents water migration. Available as Riser rated cable, thereby eliminating the need for service entrance splicing to in-building cable. Rodent resistant. Available in sizes up to 216 fibers. Length markings in meters for easy determination of cable length.

### Applications

- Direct burial
- Low to high fiber count requirements
- Inter-building duct installations
- Indoor/outdoor
- Industrial outside plant (OSP Type)

### Jacket Specifications

#### Jacket Material

Outdoor PE

Riser PVC

**Buffer Tube** Thermoplastic

**Strength Member** Aramid Yarn

**Central Strength Member** E-Glass

**Armor** Corrugated Steel Tape

**Color Code (Buffer)** Per TIA/EIA 598-B, See page 4

**Jacket Color** Black

### Ratings

**Riser** OFCR

### Specifications

#### Temperature Range (Outdoor)

Storage -40°C to 75°C

Operating -40°C to 70°C

#### Temperature Range (Riser)

Storage -40°C to 80°C

Operating -40°C to 70°C

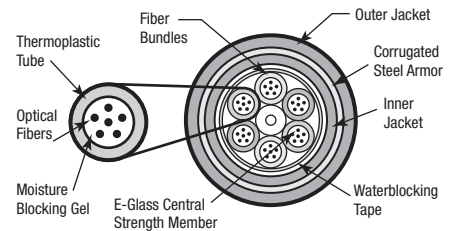
#### Min. Bend Radius

Installation 20 x OD

Long Term 15 x OD

**Optical Specifications** See page 4

### Legend



### Compliance

- TIA/EIA-568-C.3
- ICEA S-87-640

### Functional Requirements

- GR-20-CORE
- GR-409-CORE



Faster.  
Easier.  
Better.



## Double Jacket, Armored Loose Tube Cables (OSP Type) (continued)

Loose Tube – Outdoor, and Indoor/Outdoor Riser Rated

### Loose Tube Series – Armored



No. of Fibers	No. of Fibers Per Bundle	Belden Part Number					Outside Diameter		Weight		Max. Install Load	
		OM1 62.5 / 125 $\mu$ m Std. / 1 Gb	OM2 50 / 125 $\mu$ m Std. / 1 Gb	OM3 50 / 125 $\mu$ m 10 Gb - 300 m	OM4 50 / 125 $\mu$ m 10 Gb - 550 m	OS2 Singlemode Enhanced	Inch	mm	lb/1000 ft	kg/km	lb	N
<b>Outdoor</b>												
6	6	B9B381T	B9A381T	B9C381T	B9E381T	B9W381T	0.62	15.5	134	200	600	2670
12	12	B9B382T	B9A382T	B9C382T	B9E382T	B9W382T	0.62	15.5	134	200	600	2670
24	12	B9B384T	B9A384T	B9C384T	B9E384T	B9W384T	0.62	15.5	134	200	600	2670
36	12	B9B386T	B9A386T	B9C386T	B9E386T	B9W386T	0.62	15.5	134	200	600	2670
48	12	B9B389T	B9A389T	B9C389T	B9E389T	B9W389T	0.62	15.5	134	200	600	2670
72	12	B9B391T	B9A391T	B9C391T	B9E391T	B9W391T	0.65	16.4	138	206	600	2670
96	12	B9B398T	B9A398T	B9C398T	B9E398T	B9W398T	0.72	18.2	170	254	600	2670
144	12	B9B393T	B9A393T	B9C393T	B9E393T	B9W393T	0.90	22.9	259	385	600	2670
<b>Riser (NEC/CEC OFCR/OFC FT.4) Indoor/Outdoor</b>												
6	6	B9B890	B9A890	B9C890	B9E890	B9W890	0.54	13.7	138	205	600	2700
12	12	B9B891	B9A891	B9C891	B9E891	B9W891	0.54	13.7	138	205	600	2700
24	12	B9B892	B9A892	B9C892	B9E892	B9W892	0.54	13.7	138	205	600	2700
36	12	B9B893	B9A893	B9C893	B9E893	B9W893	0.54	13.7	138	205	600	2700
48	12	B9B894	B9A894	B9C894	B9E894	B9W894	0.66	16.8	176	262	600	2700
72	12	B9B895	B9A895	B9C895	B9E895	B9W895	0.66	16.8	172	256	600	2700
96	12	B9B896	B9A896	B9C896	B9E896	B9W896	0.70	17.8	206	307	600	2700
144	12	B9B897	B9A897	B9C897	B9E897	B9W897	0.88	22.4	302	449	600	2700

Additional armor/jacket configurations are available including Single and Triple jacket with armor.  
Armor types include steel/aluminum corrugated, steel/aluminum interlock, and glass yarn rodent resistant.

## Double Jacket, Heavy-Duty Loose Tube Cables

### Loose Tube – Outdoor



Double Jacket Heavy-Duty Cable

Gel-filled buffer tube prevents water migration. Available with up to 216 fibers.

#### Applications

- Direct burial
- Harsh environments
- Applications requiring good ozone-, moisture- and weather-resistance

#### Jacket Specifications

##### Jacket Material

Outer Jacket: PE

Inner Jacket: PE

##### Buffer Tube

PBT

##### Strength Member

Aramid Yarn

##### Central Strength Member

E-Glass

##### Core Wrap

Water Swellable Tape

**Color Code (Buffer)** Per TIA/EIA 598-B, See page 4

**Jacket Color** Black

#### Specifications

##### Temperature Range

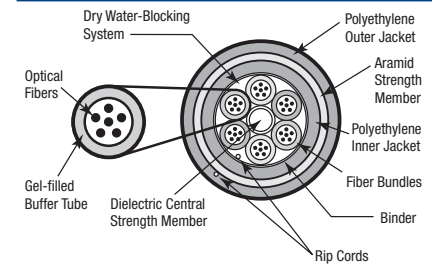
Storage -40°C to 75°C  
Operating -40°C to 70°C

##### Min. Bend Radius

Installation 20 x OD  
Long Term 15 x OD

**Optical Specifications** See page 4

#### Legend



#### Compliance

- TIA/EIA-568-C.3
- ICEA S-87-640

#### Functional Requirements

- GR-20-CORE

### Loose Tube Series – Heavy Duty



No. of Fibers	No. of Fibers Per Bundle	Belden Part Number					Outside Diameter		Weight		Max. Install Load	
		OM1 62.5 / 125 μm Std. / 1 Gb	OM2 50 / 125 μm Std. / 1 Gb	OM3 50 / 125 μm 10 Gb - 300 m	OM4 50 / 125 μm 10 Gb - 550 m	OS2 Singlemode Enhanced	Inch	mm	lb/1000 ft	kg/km	lb	N
<b>Outdoor</b>												
2	2	B9B840	B9A840	B9C840	B9E840	B9W840	0.49	12.5	84	125	600	2700
4	4	B9B841	B9A841	B9C841	B9E841	B9W841	0.49	12.5	84	125	600	2700
6	6	B9B842	B9A842	B9C842	B9E842	B9W842	0.49	12.5	84	125	600	2700
12	12	B9B844	B9A844	B9C844	B9E844	B9W844	0.49	12.5	84	125	600	2700
18	12	B9B845	B9A845	B9C845	B9E845	B9W845	0.49	12.5	84	125	600	2700
24	12	B9B846	B9A846	B9C846	B9E846	B9W846	0.49	12.5	84	125	600	2700
36	12	B9B847	B9A847	B9C847	B9E847	B9W847	0.49	12.5	84	125	600	2700
48	12	B9B848	B9A848	B9C848	B9E848	B9W848	0.49	12.5	84	125	600	2700
72	12	B9B849	B9A849	B9C849	B9E849	B9W849	0.53	13.4	97	144	600	2700
96	12	B9B820	B9A820	B9C820	B9E820	B9W820	0.60	15.2	121	180	600	2700
144	12	B9B821	B9A821	B9C821	B9E821	B9W821	0.75	19.0	184	274	600	2700
216	12	B9B822	B9A822	B9C822	B9E822	B9W822	0.76	19.3	187	273	600	2700

Faster.  
Easier.  
Better.



## Central Tube Cables

### Loose Tube – Outdoor, and Outdoor Armored

Economical option for low fiber counts. Quick and easy end preparation. Fully waterblocked with gel-filled buffer tube. No rods – easy handling. Crush, impact and abrasion resistant.

#### Applications

- Campus OSP backbones
- Drop cable
- Telecommunications and data trunk
- Direct burial (armored only)
- Lashed aerial

#### Jacket Specifications

<b>Jacket Material</b>	PE
<b>Buffer Tube</b>	PBT
<b>Core Wrap</b>	Water Swellable Tape
<b>Strength Member</b>	Fiberglass
<b>Armor</b>	Corrugated Steel
<b>Color Codes</b> (Jacket and Fibers)	Per TIA/EIA 598-B, See page 4
<b>Jacket Color</b>	Black

#### Specifications

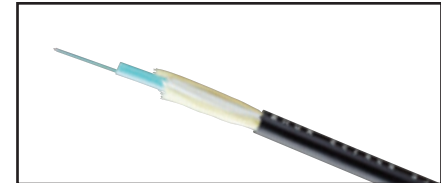
##### Temperature Range

Storage	-40°C to 75°C
Operating	-40°C to 70°C

##### Min. Bend Radius

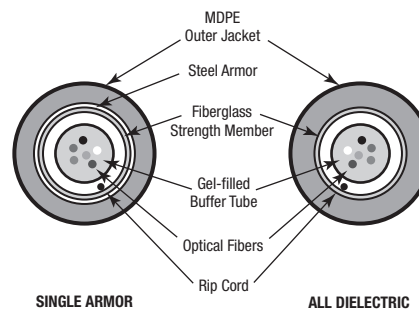
Installation	20 x OD
Long Term	15 x OD

**Optical Specifications** See page 4



Outdoor Loose Tube Cable

#### Legend



#### Functional Requirements

- GR-20-CORE

## Central Tube Series



No. of Fibers	Belden Part Number					Outside Diameter		Weight		Max. Install Load	
	OM1 62.5 / 125 µm Std. / 1 Gb	OM2 50 / 125 µm Std. / 1 Gb	OM3 50 / 125 µm 10 Gb – 300 m	OM4 50 / 125 µm 10 Gb – 550 m	OS2 Singlemode Enhanced	Inch	mm	lb/1000 ft	kg/km	lb	N
<b>Outdoor</b>											
2	B9B150	B9A150	B9C150	B9E150	B9W150	0.31	7.8	34	50	600	2700
4	B9B151	B9A151	B9C151	B9E151	B9W151	0.31	7.8	34	50	600	2700
6	B9B152	B9A152	B9C152	B9E152	B9W152	0.31	7.8	34	50	600	2700
8	B9B153	B9A153	B9C153	B9E153	B9W153	0.31	7.8	34	50	600	2700
10	B9B154	B9A154	B9C154	B9E154	B9W154	0.31	7.8	34	50	600	2700
12	B9B155	B9A155	B9C155	B9E155	B9W155	0.31	7.8	34	50	600	2700
24	B9B159	B9A159	B9C159	B9E159	B9W159	0.31	7.8	34	50	600	2700
<b>Outdoor Armored</b>											
2	B9B170	B9A170	B9C170	B9E170	B9W170	0.48	12.2	95	140	600	2700
4	B9B171	B9A171	B9C171	B9E171	B9W171	0.48	12.2	95	140	600	2700
6	B9B172	B9A172	B9C172	B9E172	B9W172	0.48	12.2	95	140	600	2700
8	B9B173	B9A173	B9C173	B9E173	B9W173	0.48	12.2	95	140	600	2700
10	B9B174	B9A174	B9C174	B9E174	B9W174	0.48	12.2	95	140	600	2700
12	B9B175	B9A175	B9C175	B9E175	B9W175	0.48	12.2	95	140	600	2700
24	B9B179	B9A179	B9C179	B9E179	B9W179	0.48	12.2	95	140	600	2700

## TrayOptic® Industrial, Heavy-Duty, All Dielectric Cables

Loose Tube – Indoor/Outdoor Riser Rated



Tray Optic Cable

Laser Optimized Fiber to handle Gigabit Ethernet light sources and expanded bandwidth requirements. Passes IEEE 1202/583-2003 flame test. Waterblocking agent for moisture protection. CPE outer jacket option provides extra chemical or abrasion resistance.

### Applications

- Industrial and other harsh environment applications
- Factory automation
- Direct burial

### Jacket Specifications

<b>Jacket Material</b>	PVC or CPE
<b>Strength Member</b>	Aramid Yarn
<b>Jacket Color</b>	
Singlemode	Yellow
62.5/125 µm	Orange
50/125 µm / 1 Gb	Orange
50/125 µm / 10 Gb	Aqua

### Ratings

<b>Riser</b>	
UL Type	OFNR
cUL Type	OFN FT.4
Flame Resistance	IEEE 1202 / 383-2003

### Specifications

#### Temperature Range

Storage	-40°C to 70°C
Operating	-40°C to 70°C

#### Crush Resistance

(EIA-455-41)	2000 N/cm
--------------	-----------

#### Impact Resistance

(EIA-455-25)	2000 impacts @ 1.6N-m
--------------	-----------------------

#### Cyclic Flexing

(EIA-455-104)	25 cycles, 12 lbs., 20 x OD radius min.
---------------	--

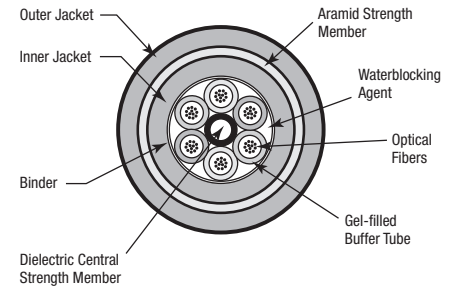
#### Min. Bend Radius

Installation	20 x OD
Long Term	15 x OD

**Maximum Installation Load** 600 lbs. (2700 N)

**Optical Specifications** See page 4

### Legend



### Compliance

- TIA/EIA-568-C.3
- ICEA S-104-696

### Functional Requirements

- GR-20-CORE
- GR-409-CORE

Faster.  
Easier.  
Better.



**TrayOptic® Industrial, Heavy-Duty, All Dielectric Cables** (continued)  
Loose Tube – Indoor/Outdoor Riser Rated



**TrayOptic Series**

No. of Fibers	No. of Fibers Per Bundle	Belden Part Number					Outside Diameter		Weight		Max. Install Load	
		OM1 62.5 / 125 µm Std. / 1 Gb	OM2 50 / 125 µm Std. / 1 Gb	OM3 50 / 125 µm 10 Gb – 300 m	OM4 50 / 125 µm 10 Gb – 550 m	OS2 Singlemode Enhanced	Inch	mm	lb/1000 ft	kg/km	lb	N
<b>Riser (NEC/CEC OFNR/OFN FT.4) PVC Jacket Indoor/Outdoor</b>												
2	2	I100255	I1A0255	I1C0255	I1E0255	I1W0255	0.43	11.00	92	136	600	2700
4	4	I100455	I1A0455	I1C0455	I1E0455	I1W0455	0.43	11.00	92	136	600	2700
6	6	I100655	I1A0655	I1C0655	I1E0655	I1W0655	0.43	11.00	92	136	600	2700
8	4	I400855	I4A0855	I4C0855	I4E0855	I4W0855	0.43	11.00	92	136	600	2700
12	6	I601255	I6A1255	I6C1255	I6E1255	I6W1255	0.43	11.00	92	136	600	2700
18	6	I601855	I6A1855	I6C1855	I6E1855	I6W1855	0.43	11.00	92	136	600	2700
24	6	I602455	I6A2455	I6C2455	I6E2455	I6W2455	0.43	11.00	92	136	600	2700
36	6	I603655	I6A3655	I6C3655	I6E3655	I6W3655	0.43	11.00	92	136	600	2700
48	12	I604855	I6A4855	I6C4855	I6E4855	I6W4855	0.54	13.72	128	186	600	2700
60	12	I606055	I6A6055	I6C6055	I6E6055	I6W6055	0.54	13.72	128	186	600	2700
72	12	I607255	I6A7255	I6C7255	I6E7255	I6W7255	0.54	13.72	128	186	600	2700
<b>Riser (NEC/CEC OFNR/OFN FT.4) CPE Jacket Indoor/Outdoor</b>												
2	2	I100266	I1A0266	I1C0266	I1E0266	I1W0266	0.43	10.90	89	124	600	2700
4	4	I100466	I1A0466	I1C0466	I1E0466	I1W0466	0.43	10.90	89	124	600	2700
6	6	I100666	I1A0666	I1C0666	I1E0666	I1W0666	0.43	10.90	89	124	600	2700
8	4	I400866	I4A0866	I4C0866	I4E0866	I4W0866	0.43	10.90	89	124	600	2700
12	6	I601266	I6A1266	I6C1266	I6E1266	I6W1266	0.43	10.90	89	124	600	2700
18	6	I601866	I6A1866	I6C1866	I6E1866	I6W1866	0.43	10.90	89	124	600	2700
24	6	I602466	I6A2466	I6C2466	I6E2466	I6W2466	0.43	10.90	89	124	600	2700
36	6	I603666	I6A3666	I6C3666	I6E3666	I6W3666	0.43	10.90	89	124	600	2700
48	12	I604866	I6A4866	I6C4866	I6E4866	I6W4866	0.54	13.72	125	192	600	2700
60	12	I606066	I6A6066	I6C6066	I6E6066	I6W6066	0.54	13.72	125	192	600	2700
72	12	I607266	I6A7266	I6C7266	I6E7266	I6W7266	0.54	13.72	125	192	600	2700

## Part Number Index

Part No.	Page	Part No.	Page	Part No.	Page	Part No.	Page	Part No.	Page
A0643206	30	AX101747	28	AX102431	28	AX104624-BK	31	AX105374-EW	29
A0643207	30	AX101758	29	AX102432	28	AX104624-EW	31	AX105379	10
A0649869	19	AX101759	29	AX102433	28	AX104681	10	AX105537	19
AC301420	19	AX101760	29	AX102481	28	AX104682	10	AX105538	17
AX100041	18	AX101773	28	AX102482	28	AX104683	10	AX105561	19
AX100045	19	AX101774	28	AX102686	29	AX104684	10	AX105563	10
AX100068	18	AX101775	28	AX102687	29	AX104685	11, 14	AX105564	10
AX100066	19	AX101776	28	AX102688	14, 29	AX104695	7	AX105565	10
AX100094	19	AX101777	28	AX102735	29	AX104696	7	AX105641-AL	29
AX100098	19	AX101870	28	AX102737	29	AX104934	18	AX105641-BK	14, 29
AX100116	18	AX101871	28	AX103070	17	AX104937	29	AX105641-EW	29
AX100220	31	AX101872	29	AX103071	17	AX104938	29	AX105642-BK	14
AX100221	31	AX101874	28	AX103151	7	AX104939	14, 29	AX105643-AL	29
AX100222	31	AX101875	28	AX103912	15	AX105002-B25	31	AX105643-BK	29
AX100495	18	AX101878	29	AX103913	15	AX105158-AL	29	AX105643-EW	29
AX100528	19	AX101879	29	AX103928	15	AX105158-BK	29	AX105646-B25	31
AX100532	19	AX101880	29	AX103930	15	AX105158-EW	29	AX105673	10
AX100534	19	AX101882	29	AX103932	15	AX105162	10	AX105672	10
AX100540	18	AX101883	29	AX103934	15	AX105164	10	AX105674	10
AX100542	18	AX101884	29	AX104019	14	AX105165	10	AX105675	10
AX100935	16	AX101886	29	AX104023	14	AX105166	10	AX105676	10
AX100936	17	AX101887	29	AX104024	14	AX105167	10	AX105677	10
AX100943	17	AX101888	29	AX104032	16	AX105174	10	AX105678	10
AX100945	17	AX101943	16	AX104210	14	AX105200-B25	6	AX105691-B25	31
AX100951	7	AX102214	31	AX104214	14	AX105201-B25	6	AX105692-B25	31
AX101085	16	AX102215	31	AX104215	14	AX105202-B25	6	AX105693-B25	31
AX101090	16	AX102216	31	AX104271	7	AX105203-B25	6	AX105694-B25	31
AX101091	16	AX102244	14	AX104276	7	AX105203-S1	6	AX105696-AL	31
AX101100	7	AX102282	14	AX104278	7	AX105205-B25	6	AX105696-BK	31
AX101101	7	AX102283	14	AX104279	7	AX105206-B25	6	AX105696-EW	31
AX101114	16, 17	AX102288	14	AX104280	7	AX105207-B25	6	AX105697-AL	31
AX101186	17	AX102305	17	AX104281	7	AX105208-B25	6	AX105697-BK	31
AX101189	16	AX102306	17	AX104282	7	AX105208-S1	6	AX105697-EW	31
AX101320	14	AX102307	16	AX104283	7	AX105209-B25	6	AX105698-AL	31
AX101321	14	AX102308	16	AX104286	7	AX105209-S1	6	AX105698-BK	31
AX101326	14	AX102309	16	AX104289	7	AX105210-B25	6	AX105698-EW	31
AX101407	19	AX102335	29	AX104290	7	AX105211-B25	6	AX105699-AL	31
AX101409	19	AX102336	29	AX104291	7	AX105212-B25	6	AX105699-BK	31
AX101484	17	AX102337	29	AX104293	7	AX105213-B25	6	AX105699-EW	31
AX101527	17	AX102410	29	AX104462	17	AX105213-S1	6	AX203567	7
AX101528	17	AX102411	29	AX104494	28	AX105214-B25	6	AX203568	7
AX101713	17	AX102412	29	AX104495	28	AX105215-B25	6	AX203569	7
AX101714	17	AX102419	29	AX104498	28	AX105252-B25	6	AX203895	7
AX101729	19	AX102420	29	AX104499	29	AX105253-B25	6	AX203930	7
AX101731	19	AX102421	14, 29	AX104572	14	AX105254-B25	6	B96551	44
AX101741	19	AX102428	28	AX104593	7	AX105374	14	B96566	44
AX101743	19	AX102429	28	AX104615	31	AX105374-AL	29	B96567	44
AX101746	28	AX102430	28	AX104624-AL	31	AX105374-BK	29	B96570	44

Faster.  
Easier.  
Better.



## Part Number Index

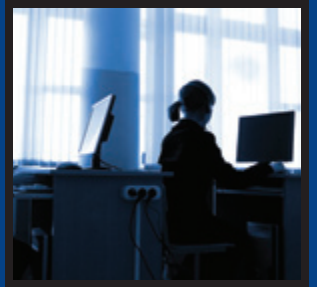
Part No.	Page	Part No.	Page	Part No.	Page	Part No.	Page	Part No.	Page
B96571	44	B9A813	46	B9B104	39	B9B246	41	B9B832	46
B96572	44	B9A814	46	B9B107	39	B9B246T	43	B9B833	46
B96575	44	B9A815	46	B9B112	39	B9B247	41	B9B834	46
B96639	44	B9A816	46	B9B114	39	B9B247T	43	B9B840	50
B96915	34	B9A817	46	B9B116	39	B9B248	41	B9B841	50
B97112	34	B9A820	50	B9B120	39	B9B248T	43	B9B842	50
B9A150	51	B9A821	50	B9B130	35	B9B381T	49	B9B844	50
B9A151	51	B9A822	50	B9B131	35	B9B382T	49	B9B845	50
B9A152	51	B9A830	46	B9B132	35	B9B384T	49	B9B846	50
B9A153	51	B9A831	46	B9B135	35	B9B396T	49	B9B847	50
B9A154	51	B9A832	46	B9B150	51	B9B389T	49	B9B948	50
B9A155	51	B9A833	46	B9B151	51	B9B391T	49	B9B849	50
B9A159	51	B9A834	46	B9B152	51	B9B393T	49	B9B890	49
B9A170	51	B9A840	50	B9B153	51	B9B398T	49	B9B891	49
B9A171	51	B9A841	50	B9B154	51	B9B500T	46	B9B892	49
B9A172	51	B9A842	50	B9B155	51	B9B502T	46	B9B893	49
B9A173	51	B9A844	50	B9B159	51	B9B505T	46	B9B894	49
B9A174	51	B9A845	50	B9B170	51	B9B507T	46	B9B895	49
B9A175	51	B9A846	50	B9B171	51	B9B509T	46	B9B896	49
B9A179	51	B9A847	50	B9B172	51	B9B510T	46	B9B897	49
B9A202	47	B9A848	50	B9B173	51	B9B511T	46	B9C001	34
B9A204	47	B9A849	50	B9B174	51	B9B513T	46	B9C002	34
B9A205	47	B9A890	49	B9B175	51	B9B520T	46	B9C013	35
B9A206	47	B9A891	49	B9B179	51	B9B601	37	B9C014	35
B9A207	47	B9A892	49	B9B202	47	B9B601T	39	B9C015	35
B9A209	47	B9A893	49	B9B204	47	B9B602	37	B9C018	35
B9A211	47	B9A894	49	B9B205	47	B9B602T	39	B9C037	37
B9A215	47	B9A895	49	B9B206	47	B9B611	37	B9C037T	39
B9A381T	49	B9A896	49	B9B207	47	B9B611T	39	B9C039	37
B9A382T	49	B9A897	49	B9B209	47	B9B612	37	B9C039T	39
B9A384T	49	B9B013	35	B9B211	47	B9B612T	39	B9C042	37
B9A386T	49	B9B014	35	B9B215	47	B9B616T	39	B9C042T	39
B9A389T	49	B9B015	35	B9B230	41	B9B620T	39	B9C043	37
B9A391T	49	B9B018	35	B9B230T	43	B9B621T	39	B9C043T	39
B9A393T	49	B9B037	37	B9B231	41	B9B623T	39	B9C045	37
B9A398T	49	B9B037T	39	B9B231T	43	B9B810	46	B9C045T	39
B9A500T	46	B9B039	37	B9B233	41	B9B811	46	B9C048	37
B9A502T	46	B9B039T	39	B9B233T	43	B9B812	46	B9C048T	39
B9A505T	46	B9B042	37	B9B240	41	B9B813	46	B9C100	39
B9A507T	46	B9B042T	39	B9B240T	43	B9B814	46	B9C102	39
B9A509T	46	B9B043	37	B9B241	41	B9B815	46	B9C104	39
B9A510T	46	B9B043T	39	B9B241T	43	B9B816	46	B9C107	39
B9A511T	46	B9B045	37	B9B242	41	B9B817	46	B9C112	39
B9A513T	43	B9B045T	39	B9B242T	43	B9B820	50	B9C114	39
B9A520T	46	B9B048	37	B9B243	41	B9B821	50	B9C116	39
B9A810	46	B9B048T	39	B9B243T	43	B9B822	50	B9C120	39
B9A811	46	B9B100	39	B9B245	41	B9B830	46	B9C130	35
B9A812	46	B9B102	39	B9B245T	43	B9B831	46	B9C131	35

## Part Number Index

Part No.	Page	Part No.	Page	Part No.	Page	Part No.	Page	Part No.	Page
B9C132	35	B9C386T	49	B9C842	50	B9E153	51	B9E398T	49
B9C135	35	B9C389T	49	B9C844	50	B9E154	51	B9E500T	46
B9C150	51	B9C391T	49	B9C845	50	B9E155	51	B9E502T	46
B9C151	51	B9C393T	49	B9C846	50	B9E159	51	B9E505T	46
B9C152	51	B9C398T	49	B9C847	50	B9E170	51	B9E507T	46
B9C154	51	B9C500T	46	B9C848	50	B9E171	51	B9E509T	46
B9C155	51	B9C502T	46	B9B849	50	B9E172	51	B9E510T	46
B9C159	51	B9C505T	46	B9C890	49	B9E173	51	B9E511T	46
B9C170	51	B9C507T	46	B9C891	49	B9E174	51	B9E513T	46
B9C171	51	B9C509T	46	B9C892	49	B9E175	51	B9E520T	46
B9C172	51	B9C510T	46	B9C893	49	B9E179	51	B9E601	37
B9C173	51	B9C511T	46	B9C894	49	B9E202	47	B9E601T	39
B9C174	51	B9C513T	46	B9C895	49	B9E204	47	B9E602	37
B9C175	51	B9C520T	46	B9C896	49	B9E205	47	B9E602T	39
B9C179	51	B9C601	37	B9C897	49	B9E206	47	B9E611	37
B9C202	47	B9C601T	39	B9E001	34	B9E207	47	B9E611T	39
B9C204	47	B9C602	37	B9E002	34	B9E209	47	B9E612	37
B9C205	47	B9C602T	39	B9E013	35	B9E211	47	B9E612T	39
B9C206	47	B9C611	37	B9E014	35	B9E215	47	B9E616	37
B9C207	47	B9C611T	39	B9E015	35	B9E230	41	B9E616T	39
B9C209	47	B9C612	37	B9E018	35	B9E230T	43	B9E620	37
B9C211	47	B9C612T	39	B9E037	37	B9E231	41	B9E620T	39
B9C215	47	B9C616	37	B9E037T	39	B9E231T	43	B9E621	37
B9C230	41	B9C616T	39	B9E039	37	B9E233	41	B9E621T	39
B9C230T	43	B9C620	37	B9E039T	39	B9E233T	43	B9E623	37
B9C231	41	B9C620T	39	B9E042	37	B9E240	41	B9E623T	39
B9C231T	43	B9C621	37	B9E042T	39	B9E240T	43	B9E810	46
B9C233	41	B9C621T	39	B9E043	37	B9E241	41	B9E811	46
B9C233T	43	B9C623	37	B9E043T	39	B9E241T	43	B9E812	46
B9C240	41	B9C623T	39	B9E045	37	B9E242	41	B9E813	46
B9C240T	43	B9C810	46	B9E045T	39	B9E242T	43	B9E814	46
B9C241	41	B9C811	46	B9E048	37	B9E243	41	B9E815	46
B9C241T	43	B9C812	46	B9E048T	39	B9E243T	43	B9E816	46
B9C242	41	B9C813	46	B9E100	39	B9E245	41	B9E817	46
B9C242T	43	B9C814	46	B9E102	39	B9E245T	43	B9E820	50
B9C243	41	B9C815	46	B9E104	39	B9E246	41	B9E821	50
B9C243T	43	B9C816	46	B9E107	39	B9E246T	43	B9E822	50
B9C245	41	B9C817	46	B9E112	39	B9E247	41	B9E830	46
B9C245T	43	B9C820	50	B9E114	39	B9E247T	43	B9E831	46
B9C246	41	B9C821	50	B9E116	39	B9E248	41	B9E832	46
B9C246T	43	B9C822	50	B9E120	39	B9E248T	43	B9E833	46
B9C247	41	B9C830	46	B9E130	35	B9E381T	49	B9E834	46
B9C247T	43	B9C831	46	B9E131	35	B9E382T	49	B9E840	50
B9C248	41	B9C832	46	B9E132	35	B9E384T	49	B9E841	50
B9C248T	43	B9C833	46	B9E135	35	B9E386T	49	B9E842	50
B9C381T	49	B9C834	46	B9E150	51	B9E389T	49	B9E844	50
B9C382T	49	B9C840	50	B9E151	51	B9E391T	49	B9E845	50
B9C384T	49	B9C841	50	B9E152	51	B9E393T	49	B9E846	50



Faster.  
Easier.  
Better.



## Part Number Index

Part No.	Page	Part No.	Page	Part No.	Page	Part No.	Page	Part No.	Page
B9E847	50	B9W170	51	B9W507T	46	B9W891	49	FCSU12LAMF1G	11
B9E848	50	B9W171	51	B9W509T	46	B9W892	49	FCSU12LDMF	11
B9E849	50	B9W172	51	B9W510T	46	B9W893	49	FCSU12LDMF1B	11
B9E890	49	B9W173	51	B9W511T	46	B9W894	49	FCSU12SBMF	11
B9E891	49	B9W174	51	B9W513T	46	B9W895	49	FCSU12SCMF	11
B9E892	49	B9W175	51	B9W520T	46	B9W896	49	FF1U06SD	13
B9E893	49	B9W179	51	B9W601	37	B9W897	49	FF1U12LD	13
B9E894	49	B9W202	47	B9W601T	39	FC1H06SDFS	11	FF3H18LD	13
B9E895	49	B9W204	47	B9W602	37	FC1H12LDFS	11	FF3H18MP	13
B9E896	49	B9W205	47	B9W602T	39	FC1H12MPFS	11	FF3U06SD	13
B9E897	49	B9W206	47	B9W611	37	FC1U06SDMF	11	FF3U12LD	13
B9W001	34	B9W207	47	B9W611T	39	FC1U12LDMF	11	FF3U12MP	13
B9W002	34	B9W209	47	B9W612	37	FC1U12LDMF1K	11	FF4H18LD	13
B9W013	35	B9W211	47	B9W612T	39	FC3H06SDFS	11	FF4H18MP	13
B9W014	35	B9W215	47	B9W616	37	FC3H12LDFS	11	FF4U06SD	13
B9W015	35	B9W230	41	B9W616T	39	FC3H12MPFS	11	FF4U12LD	13
B9W018	35	B9W230T	43	B9W620	37	FC3H18LDMF	11	FF4U12MP	13
B9W037	37	B9W231	41	B9W620T	39	FC3H18LDMF1A	11	FFSH18LA	13
B9W037T	39	B9W231T	43	B9W621	37	FC3U06SDMF	11	FFSH18LD	13
B9W039	37	B9W233	41	B9W621T	39	FC3U12LDMF	11	FFSH18MP	13
B9W039T	39	B9W233T	43	B9W623	37	FC3U12LDMF1A	11	FFSU06LQ	13
B9W042	37	B9W240	41	B9W623T	39	FC4H06SDFS	11	FFSU06LS	13
B9W042T	39	B9W240T	43	B9W810	46	FC4H12LDFS	11	FFSU06SA	13
B9W043	37	B9W241	41	B9W811	46	FC4H12MPFS	11	FFSU06SD	13
B9W043T	39	B9W241T	43	B9W812	46	FC4H18LDMF	11	FFSU06SP	13
B9W045	37	B9W242	41	B9W813	46	FC4H18LDMF1E	11	FFSU06SR	13
B9W045T	39	B9W242T	43	B9W814	46	FC4U06SDMF	11	FFSU12LA	13
B9W048	37	B9W243	41	B9W815	46	FC4U12LDMF	11	FFSU12LD	13
B9W048T	39	B9W243T	43	B9W816	46	FC4U12LDMF1E	11	FFSU12MP	13
B9W100	39	B9W245	41	B9W817	46	FCSH06SDFS	11	FFSU12SB	13
B9W102	39	B9W245T	43	B9W820	50	FCSH12LAFS	11	FFSU12SC	13
B9W104	39	B9W246	41	B9W821	50	FCSH12LDFS	11	FFSU12ST	13
B9W107	39	B9W246T	43	B9W822	50	FCSH12MPFS	11	FFZF00BB	14
B9W112	39	B9W247	41	B9W830	46	FCSH12SBFS	11	FFZH06KC	14
B9W114	39	B9W247T	43	B9W831	46	FCSH12STFS	11	FFZH08KC	14
B9W116	39	B9W248	41	B9W832	46	FCSH18LAMF	11	FI1I001RB	34
B9W120	39	B9W248T	43	B9W833	46	FCSH18LAMF1G	11	FI1I002RB	34
B9W130	35	B9W381T	49	B9W834	46	FCSH18LDMF	11	FI3I001RB	34
B9W131	35	B9W382T	49	B9W840	50	FCSH18LDMF1B	11	FI3I002RB	34
B9W132	35	B9W384T	49	B9W841	50	FCSU06LQMF	11	FI4I001RBA	34
B9W135	35	B9W386T	49	B9W842	50	FCSU06LQMF1G	11	FI4I002RBA	34
B9W150	51	B9W389T	49	B9W844	50	FCSU06LSMF	11	FISI001RB	34
B9W151	51	B9W391T	49	B9W845	50	FCSU06LSMF1B	11	FISI002RB	34
B9W152	51	B9W393T	49	B9W846	50	FCSU06SAMF	11	FP1LSDSD003M	21
B9W153	51	B9W398T	49	B9W847	50	FCSU06SDMF	11	FP1SDSD002M	21
B9W154	51	B9W500T	46	B9W848	50	FCSU06SPMF	11	FP1SDSD003M	21
B9W155	51	B9W502T	46	B9W849	50	FCSU06SRMF	11	FP1SDSD005M	21
B9W159	51	B9W505T	46	B9W890	49	FCSU12LAMF	11	FP1SDST003M	21

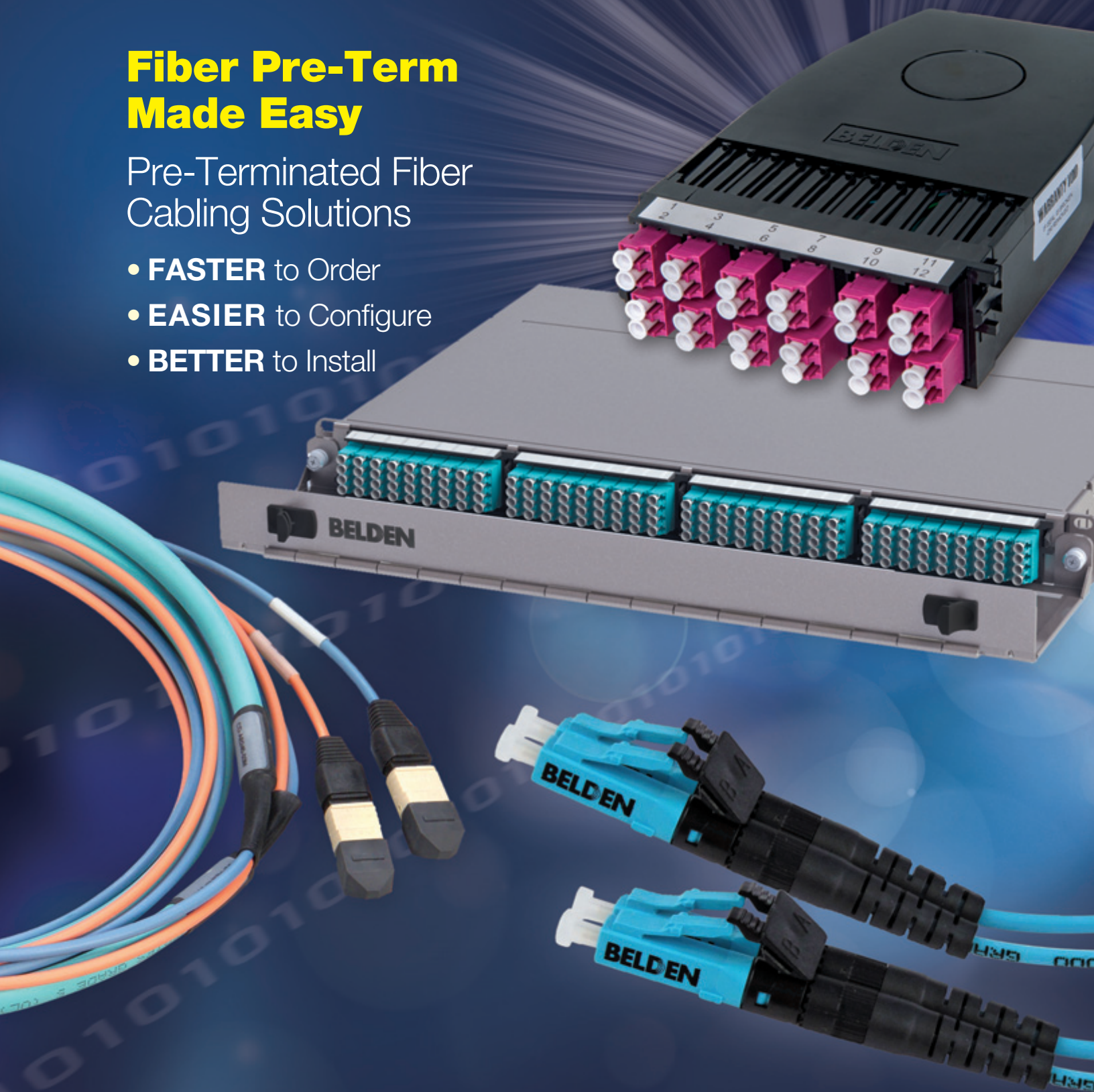
## Part Number Index

Part No.	Page	Part No.	Page	Part No.	Page	Part No.	Page	Part No.	Page
FP1STST002M	21	FPSLD4F005M	23	FTSSB3MMPS01	8	I1W0466	53	I6C3666	53
FP1STST003M	21	FPSLDLD002M	21	FTSSB900PR12	8	I1W0655	53	I6C4855	53
FP1STST005M	21	FPSLDLD003M	21	FTSSC3MMPS01	8	I1W0666	53	I6C4866	53
FP3LD4F002M	23	FPSLDLD005M	21	FTSSC900PR12	8	I400855	53	I6C6055	53
FP3LD4F003M	23	FPSLDMF002M	23	FTSSD3MMPS01	8	I400866	53	I6C6066	53
FP3LD4F005M	23	FPSLDMF003M	23	FTSST3MMPS01	8	I4A0855	53	I6C7255	53
FP3LDLD002M	21	FPSLDMF005M	23	FTSST900PR12	8	I4A0866	53	I6C7266	53
FP3LDLD003M	21	FPSLSD003M	21	FW3MBP06LD	30	I4C0855	53	I6E1255	53
FP3LDLD005M	21	FPSMFNF002M	21	FW3MBS06LD	30	I4C0866	53	I6E1266	53
FP3LDMF002M	23	FPSMFMF003M	21	FW4MBP06LD	30	I4E0855	53	I6E1855	53
FP3LDMF003M	23	FPSMFMF005M	21	FW4MBS06LD	30	I4E0866	53	I6E1866	53
FP3LDMF005M	23	FPSSASA002M	21	FW5MBP06LA	30	I4W0855	53	I6E2455	53
FP3LDS003M	21	FPSSASA003M	21	FW5MBS06LD	30	I4W0866	53	I6E2466	53
FP3MFMF002M	21	FPSSASA005M	21	FWSMBS06LA	30	I601255	53	I6E3655	53
FP3MFMF003M	21	FPSSSD002M	21	FWSMBS06LD	30	I601266	53	I6E3666	53
FP3MFMF005M	21	FPSSSD003M	21	FXBUCLLDB25N	6	I601855	53	I6E4855	53
FP3SDSD002M	21	FPSSSD005M	21	FXBUCLSDB25N	6	I601866	53	I6E4866	53
FP3SDSD003M	21	FPSSDST003M	21	FXFUHS250DB25	8	I602455	53	I6E6055	53
FP3SDSD005M	21	FPSSTST002M	21	FXFUHS900AB25	8	I602466	53	I6E6066	53
FP3SDST003M	21	FPSSTST003M	21	FXFUHS9T2CB25	8	I603655	53	I6E7255	53
FP3STST002M	21	FPSSTST005M	21	FXFUHSRIBEB12	8	I603666	53	I6E7266	53
FP3STST003M	21	FT1SC3MMPS01	8	I100255	53	I604855	53	I6W1255	53
FP3STST005M	21	FT1SC900PR12	8	I100266	53	I604866	53	I6W1266	53
FP4LD4F002M	23	FT1ST3MMPS01	8	I100455	53	I606055	53	I6W1855	53
FP4LD4F003M	23	FT1ST900PR12	8	I100466	53	I606066	53	I6W1866	53
FP4LD4F005M	23	FT3LC2MMPS01	8	I100655	53	I607255	53	I6W2455	53
FP4LDLD002M	21	FT3LC900PR12	8	I100666	53	I607266	53	I6W2466	53
FP4LDLD003M	21	FT3LD2MMPS01	8	I1A0255	53	I6A1255	53	I6W3655	53
FP4LDLD005M	21	FT3MM3MMPS01	8	I1A0266	53	I6A1266	53	I6W3666	53
FP4LDMF002M	23	FT3SC3MMPS01	8	I1A0455	53	I6A1855	53	I6W4855	53
FP4LDMF003M	23	FT3SC900PR12	8	I1A0466	53	I6A1866	53	I6W4866	53
FP4LDMF005M	23	FT3SD3MMPS01	8	I1A0655	53	I6A2455	53	I6W6055	53
FP4LDS003M	21	FT3ST3MMPS01	8	I1A0666	53	I6A2466	53	I6W6066	53
FP4MFMF002M	21	FT3ST900PR12	8	I1C0255	53	I6A3655	53	I6W7255	53
FP4MFMF003M	21	FT4LC2MMPS01	8	I1C0266	53	I6A3666	53	I6W7266	53
FP4MFMF005M	21	FT4LC900PR12	8	I1C0455	53	I6A4855	53		
FP4SDSD002M	21	FT4LD2MMPS01	8	I1C0466	53	I6A4866	53		
FP4SDSD003M	21	FT4SC3MMPS01	8	I1C0655	53	I6A6055	53		
FP4SDSD005M	21	FT4SC900PR12	8	I1C0666	53	I6A6066	53		
FP4STST002M	21	FT4SD3MMPS01	8	I1E0255	53	I6A7255	53		
FP4STST003M	21	FTSLA2MMPS01	8	I1E0266	53	I6A7266	53		
FP4STST005M	21	FTSLB2MMPS01	8	I1E0455	53	I6C1255	53		
FPSLALA002M	21	FTSLB900PR12	8	I1E0466	53	I6C1266	53		
FPSLALA003M	21	FTSLC900PR12	8	I1E0655	53	I6C1855	53		
FPSLALA005M	21	FTSLD2MMPS01	8	I1E0666	53	I6C1866	53		
FPSLASA003M	21	FTSMM3MMPS01	8	I1W0255	53	I6C2455	53		
FPSLD4F002M	23	FTSLC2MMPS01	8	I1W0266	53	I6C2466	53		
FPSLD4F003M	23	FTSSA3MMPS01	8	I1W0455	53	I6C3655	53		

# Fiber Pre-Term Made Easy

Pre-Terminated Fiber  
Cabling Solutions

- **FASTER** to Order
- **EASIER** to Configure
- **BETTER** to Install



For more information, contact us  
at **1.800.BELDEN.1** (1.800.235.3361)  
or visit [www.belden.com](http://www.belden.com).

**BELDEN**  
SENDING ALL THE RIGHT SIGNALS



## GLOBAL LOCATIONS

For worldwide Sales and Technical Support, visit: [www.belden.com](http://www.belden.com)



---

### UNITED STATES

#### Division Headquarters

401 Pennsylvania Parkway, #200  
Indianapolis, IN  
USA  
**Phone: (1)-317-818-6300**  
Inside Sales: 800-235-3361  
Fax: (1)-317-818-6382  
[info@belden.com](mailto:info@belden.com)

### CANADA

#### National Business Center

2280 Alfred-Nobel Boulevard  
St-Laurent, Quebec  
Canada  
**Phone: 514-822-2345**  
Fax: 514-822-7979  
[info@belden.com](mailto:info@belden.com)

### BRAZIL

#### Regional Office

Rua Surubim, 577 - 4o andar  
São Paulo, SP  
Brazil  
**Phone: 5511-4097-2555**  
Fax: 5511-4097-2545  
[vendas@belden.com.br](mailto:vendas@belden.com.br)