

CATEGORY 5e, 5 AND 3 TWISTED PAIR SOLUTIONS



MINI-JACK™ Category 5e Modular Jack with Micro-Cap



Accommodates large and/or unique O.D. Cable



Right angle exit in shallow installation spaces

Part Number	Description	No. of Module Spaces	T568 Wire Scheme	Color‡	Std. Pkg. Qty.	Std. Ctn. Qty.
Universal 8 Position, 8 Wire (RJ45 Type)						
CJ588SAIW	8 position, 8 wire universal modular jack. Termination cap is color coded for wiring schemes. Cap designed for large and/or unique shaped cables and for shallow installation spaces.	1	A	Off White	1	50
CJ588SBIW			B			

‡Other colors available. See page 3.



MINI-JACK TX-5™ Modular Jack

- Designed to comply with Category 5 performance requirements
- Utilizes GIGA-TX™ Technology
- Can be clearly identified with labels found on page 165



Part Number	Description	No. of Module Spaces	Color‡	Std. Pkg. Qty.	Std. Ctn. Qty.
Universal 8 Position, 8 Wire T568A and T568B Coded (RJ45 Type)					
CJ588TIW	8 position, 8 wire universal modular jack. Termination cap is color coded for T568A and T568B wiring schemes.	1	Off White	1	50

See page 4 for termination tool.

‡Other colors available. See page 3.

Also works with modular patch panels found on page 51.

CJ588TBL-24 specifically packaged for modular patch panels, see page 52.



MINI-JACK Category 3 Modular Jacks

- Terminates 24 AWG solid unshielded twisted pair to a modular jack (For 22 AWG applications, call Technical Assistance - 888-506-5400 Ext. 6914)
- White jack base designates Category 3
- Can be clearly identified with labels found on page 165

CJ88



CJ66U



CJ66



CJ64



Part Number	Description	No. of Module Spaces	Color‡	Std. Pkg. Qty.	Std. Ctn. Qty.
Universal 8 Position, 8 Wire T568A and T568B Coded (RJ45 Type)					
CJ88IW	8 position, 8 wire universal modular jack. Termination cap is color coded for T568A and T568B wiring schemes.	1	Off White	1	50
6 Position, 6 Wire USOC Coded (RJ11 Type)					
CJ66UIW	6 position, 6 wire modular jack. Termination cap is color coded for USOC wiring scheme.	1	Off White	1	50
6 Position, 6 Wire (RJ11 Type)					
CJ66IW	6 position, 6 wire modular jack.	1	Off White	1	50
6 Position, 4 Wire (RJ11 Type)					
CJ64IW	6 position, 4 wire modular jack.	1	Off White	1	50

‡Other colors available. See page 3.

RJ48X Modular Jack

- Used for the connection of 1.544 Mbps T1 digital service lines
- Category 3 performance
- Can be clearly identified with labels found on page 172



Part Number	Description	No. of Module Spaces	Color‡	Std. Pkg. Qty.	Std. Ctn. Qty.
RJ48X Modular Jack					
CJ88XBL	8 position jack wired with four conductors on 1/2/4/5, with shorting bar.	1	Black	1	50

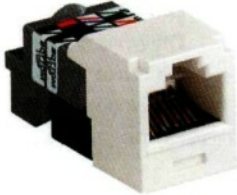
‡Other colors available. See page 3.

CATEGORY 6* TWISTED PAIR SOLUTIONS



GIGA-CHANNEL™ MINI-JACK TX-6™ Modular Jack

- Exceeds all proposed Category 6 connector requirements including Powersum, ACR, ELFEXT and Return Loss
- Features a revolutionary new termination method which speeds installation and reduces conductor untwists to provide superior performance
- Can be clearly identified with labels found on page 172



Part Number	Description	No. of Module Spaces	Color‡	Std. Pkg. Qty.	Std. Ctn. Qty.
GIGA-CHANNEL MINI-JACK TX-6 Modular Jack					
CJ688TIW	8 position, 8 wire universal modular jack. Termination cap is color coded for T568A and T568B wiring schemes	1	Off White	1	50
CJ688TIW-C	8 position, 8 wire universal modular jack. Termination cap is color coded for T568A and T568B wiring schemes	1	Off White	100	1000

‡Other colors available. See color chart below.
Also works with modular patch panels found on page 51.
CJ688TBL-24 specifically packaged for modular patch panels, see page 52.



GIGA-CHANNEL MINI-JACK TX-6 Shuttered Modular Jack

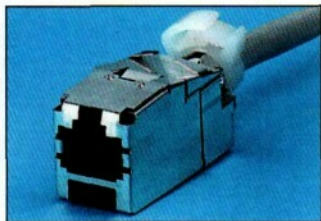


Part Number	Description	No. of Module Spaces	Color‡	Std. Pkg. Qty.	Std. Ctn. Qty.
GIGA-CHANNEL MINI-JACK TX-6 Shuttered Modular Jack					
CJD688TIW	8 position, 8 wire universal modular jack. Termination cap is color coded for T568A and T568B wiring schemes	1	Off White	1	50

‡Other colors available. See color chart below.



GIGA-CHANNEL MINI-JACK TX-6 Shielded Modular Jack



Part Number	Description	No. of Module Spaces	Std. Pkg. Qty.	Std. Ctn. Qty.
GIGA-CHANNEL MINI-JACK TX-6 Shielded Modular Jack				
CJS688T	8 position, 8 wire shielded modular jack with one piece shield	1	1	50

Grounding Kit



Part Number	Description	Std. Pkg. Qty.	Std. Ctn. Qty.
Grounding Kit			
CJSGK-X	Grounding kit for shielded applications	10	100

Standard Color ‡:		For other colors, substitute IW with:									
	IW		EI		WH		IG		BL		OR
Off White		Elec. Ivory		White		Int. Gray		Black		Orange	
Color shown is approximate.			RD		BU		GR		YL		VL
		Red		Blue		Green		Yellow		Violet	
Colors shown are approximate.											

*Proposed Category 6 Industry Specifications