

## Application:

Conduit outlet bodies are installed in conduit systems to:

- act as pull outlets for conductors being installed
- provide openings for making splices and taps in conductors
- act as mounting outlets for lighting fixtures and wiring devices
- connect conduit sections
- provide taps for branch conduit runs
- make 90° bends in conduit runs
- provide for access to conductors for maintenance and future system changes

## Features:

### Conduit Outlet Bodies

- Form 7 Condulet outlet bodies approach conduit in size for neat, compact installations.
- Form 8 and Mark 9 bodies provide more room for heavier conductors
- Many shapes and sizes are available for rigid threaded conduit – see complete listings on page 6.
- Conduit hubs have tapered threads and feature integral bushings for protection of wire insulation.
- Form 7 has exclusive snaptight and wedge-nut cover attachment to provide clear, unobstructed cover opening.
- Built-in rollers on all Form 5 1¼" to 4" C and LB bodies to facilitate wire pulling.
- Series 5 bodies available in optional configuration with set screws on hubs for EMT conduit (add suffix -MT to catalog number).

### Gaskets

Solid gaskets:

- are used with blank covers
- for Mark 9 and Form 5, can be converted to open type gaskets by tearing out center section along scored lines – ½" to 2" sizes
- for Form 7 are used with all covers

Open gaskets:

- for Form 8 – ½" to 4" sizes
- for Mark 9 – 2½" to 4" sizes

### Blank Covers

Stainless steel cover screws are standard on Form 7, Form 8, Mark 9, Series 5 and Form 5 covers.

- Form 7

Wedge nut design facilitates installation and removal. Nuts are held captive in cover. Covers can be used with or without gaskets.

SNAPTIGHT™ Form 7 Covers with integral sealing gaskets are installed without the use of screws, reducing installation time and costs. Covers are reusable.

- Form 8

Two cover screws provided on all sizes to provide tight cover and gasket assembly. *Feraloy* iron alloy covers have dome shapes for added strength and extra wiring room.

- Mark 9

Self-retaining cover screws.

## Standard Materials:

- Form 7, Form 8 outlet bodies – *Feraloy* iron alloy
- Mark 9 outlet bodies – copper-free aluminum
- Form 5 – malleable iron
- Series 5 – die cast aluminum

## Standard Finishes:

- Form 7, Form 8 outlet bodies – electrogalvanized with aluminum acrylic paint
- Mark 9 outlet bodies – natural
- Form 5 – electrogalvanized with aluminum acrylic paint
- Series 5 – aluminum acrylic paint

## Options:

Description	Suffix to be Added to Cat. #
Form 7 body and cover only: Copper-free aluminum. . . . .	SA
<i>Corro-free</i> ™ epoxy powder coat. . . . .	add suffix S752
• Series 5 in an EMT version with set screws on all hubs ....	add suffix -MT
• Series 5 pre-packaged with neoprene gasket and cover ....	add suffix -CGN

## Certifications and Compliances:

- Outlet Bodies –
- UL Standard: 514B
  - Fed. Spec.: W-C-586D
  - CSA Standard 22.2 No. 18
- Size comparison of 1½" Form 7, Mark 9, Form 8, and Mogul bodies.** Round backs on Form 7 and Mogul; flat backs on Form 8 and Mark 9. The round back conduit body is a registered trademark of Cooper Industries, Inc.
- Raintight (when installed with cover and gasket)



Form 7



Mark 9




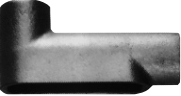



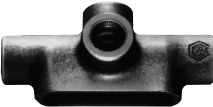




Form 8



Mogul

**Threaded Rigid Bodies**

		Hub Size									
Shape	Style	1/2	3/4	1	1 1/4	1 1/2	2	2 1/2	3	3 1/2	4
	<b>C</b>										
	Form 7	C17	C27	C37	C47	C57	C67	C77	C87		
	Form 8	C18	C28	C38	C448	C58	C68	C78	C88		
	Mark 9	C19	C29	C39	C49	C59	C69	C789	C889	C989	C1089
	Form 5	C50M	C75M	C100M	C125M	C150M	C200M	C250M	C300M	C350M	C400M
Series 5	C15	C25	C35	C45	C55	C65	C75	C85	C95	C105	
	<b>E</b>										
	Form 7	E17	E27	E37							
	<b>L</b>										
	Form 7	L17	L27	L37	L47	L57	L67				
Double faced – may be used as LL or LR – has 2 openings, one of which is furnished with a blank sheet steel cover											
	<b>LB</b>										
	Form 7	LB17	LB27	LB37	LB47	LB57	LB67	LB777	LB87	LB97	LB107
	Form 8	LB18	LB28	LB38	LB448	LB58	LB68	LB78	LB888	LB98	LB108
	Mark 9	LB19	LB29	LB39	LB49	LB59	LB69	LB789	LB889	LB989	LB1089
	Form 5	LB50M	LB75M	LB100M	LB125M	LB150M	LB200M	LB250M	LB300M	LB350M	LB400M
Series 5	LB15	LB25	LB35	LB45	LB55	LB65	LB75	LB85	LB95	LB105	
	<b>LL</b>										
	Form 7	LL17	LL27	LL37	LL47	LL57	LL67	LL777	LL87	LL97	LL107
	Form 8	LL18	LL28	LL38	LL448	LL58	LL68	LL78	LL888		
	Mark 9	LL19	LL29	LL39	LL49	LL59	LL69	LL789	LL889	LL989	LL1089
	Form 5	LL50M	LL75M	LL100M	LL125M	LL150M	LL200M	LL250M	LL300M	LL350M	LL400M
Series 5	LL15	LL25	LL35	LL45	LL55	LL65	LL75	LL85	LL95	LL105	
	<b>LR</b>										
	Form 7	LR17	LR27	LR37	LR47	LR57	LR67	LR777	LR87	LR97	LR107
	Form 8	LR18	LR28	LR38	LR448	LR58	LR68	LR78	LR888		
	Mark 9	LR19	LR29	LR39	LR49	LR59	LR69	LR789	LR889	LR989	LR1089
	Form 5	LR50M	LR75M	LR100M	LR125M	LR150M	LR200M	LR250M	LR300M	LR350M	LR400M
Series 5	LR15	LR25	LR35	LR45	LR55	LR65	LR75	LR85	LR95	LR105	
	<b>T</b>										
	Form 7	T17	T27	T37	T47	T57	T67	T77	T87	T97	T107
	Form 8	T18	T28	T38	T448	T58	T68	T78	T88		
	Mark 9	T19	T29	T39	T49	T59	T69	T789	T889	T989	T1089
	Form 5	T50M	T75M	T100M	T125M	T150M	T200M	T250M	T300M	T350M	T400M
Series 5	T15	T25	T35	T45	T55	T65	T75	T85	T95	T105	
	<b>TA</b>										
	Form 7	TA17	TA27	TA37	TA47	TA57	TA67				
	<b>TB</b>										
	Form 7	TB17	TB27	TB37	TB47	TB57	TB67				
	Form 8	TB18	TB28	TB38	TB448	TB58	TB68				
	Form 5	TB50M	TB75M	TB100M	TB125M	TB150M	TB200M				
	<b>X</b>										
	Form 7	X17	X27	X37	X47	X57	X67				
	Form 8	X18	X28	X38	X448	X58	X68				
	Form 5	X50M	X75M	X100M	X125M	X150M	X200M				

# Condulet® Conduit Outlet Bodies

## Covers and Gaskets

Dimensions Pgs. 9 to 11 (Dimensions for Form 5 – see Section CP)

### Blank Covers



#### Sheet Steel

Size	Form 7 Wedgenut Cat. #	Form 7 Snaptight™ Covers‡ Cat. #	Form 7 Wedgenut w/Integral Gasket Cat. #	Form 8* Cat. #	Form 8 w/Integral Gasket Cat. #	Form 5 Cat. #
1/2	170	170-SG	170G	180	180G	K50S
3/4	270	270-SG	270G	280	280G	K75S
1	370	370-SG	370G	380	380G	K100S
1 1/4	470	470-SG	470G	480	480G	K125S
1 1/2	570	570-SG	570G	580	580G	K125S
2	670	670-SG	670G	680	680G	K200S
2 1/2	870			880		K250S
3	870			880		K250S
3 1/2	970			980		K350S
4	970			980		K350S



#### Sheet Aluminum

#### Feraloy® Iron Alloy

#### Cast Aluminum

Size	Mark 9 Cat. #	Mark 9 w/Integral Gasket Cat. #	Form 7 Cat. #	Form 7 w/Integral Gasket Cat. #	Series 5 Cat. #	Form 7 Wedgenut Cat. #	Form 7 Wedgenut w/Integral Gasket Cat. #	Form 8* Cat. #	Form 5 ♦ Cat. #	Form 7 Wedgenut Cat. #
1/2	190	190G	170-SA	170G-SA	150	170F	170FG	180F	K50CM	170F-SA
3/4	290	290G	270-SA	270G-SA	250	270F	270FG	280F	K75CM	270F-SA
1	390	390G	370-SA	370G-SA	350	370F	370FG	380F	K100CM	370F-SA
1 1/4	490	490G	470-SA	470G-SA	450	470F	470FG	480F	K125CM	470F-SA
1 1/2	590	590G	570-SA	570G-SA	450	570F	570FG	580F	K125CM	570F-SA
2	690	690G	670-SA	670G-SA	650	670F	670FG	680F	K200CM	670F-SA
2 1/2	889		870-SA		850D	870F		880F	K250CM	870F-SA
3	889		870-SA		850D	870F		880F	K250CM	870F-SA
3 1/2	989		970-SA		950D	970F		980F	K350CM	970F-SA
4	989		970-SA		950D	970F		980F	K350CM	970F-SA

### Solid Gaskets

#### Neoprene



Size	Form 7 Cat. #	Form 8* Cat. #	Mark 9† Cat. #	Form 5 Cat. #	Series 5 Cat. #
1/2	GASK571	GASK851N	GASK1941	GK50N	GASK015N
3/4	GASK572	GASK852N	GASK1942	GK75N	GASK025N
1	GASK573	GASK853N	GASK1943	GK100N	GASK035N
1 1/4	GASK574	GASK854N	GASK1944	GK125N	GASK045N
1 1/2	GASK575	GASK805N	GASK1945	GK125N	GASK045N
2	GASK576	GASK806N	GASK1946	GK200N	GASK065N
2 1/2	GASK578	GASK808N	GASK808N	GK250N	GASK085N
3	GASK578	GASK808N	GASK808N	GK250N	GASK085N
3 1/2	GASK579	GASK809N	GASK8089N	GK350N	GASK095N
4	GASK579	GASK8089N	GASK809N	GK350N	GASK095N

\* 1/2 – 1 1/4 are solid gaskets; 1 1/2 – 4 are open gaskets.

† 1/2 – 2 are solid gaskets; 2 1/2 – 4 are open gaskets.

\* Two cover screws on 1/2" to 2" Form 8 covers and four cover screws on 2 1/2" and larger Form 8 covers.

‡ Form 7 Snaptight covers with integral sealing gasket are installed without the use of screws.

♦ Malleable Iron Covers.

**Application:**

Form 7 Condulets are installed in conduit systems to:

- act as pull outlets for conductors being installed
- provide an opening for making splices and taps in conductors
- connect conduit sections
- provide taps for branch conduit runs
- make 90-degree bends in conduit runs
- provide access to conductors in a conduit system for maintenance and future system changes

**Features:**

- All SnapPack product is individually bar coded to facilitate more efficient inventory control
- Distributors and end users need to stock a single SKU instead of three separate component numbers – order the body, cover and gasket with one catalog number – saving transaction costs, and making product selection and merchandising fast and easy
- Form 7 conduit bodies are compact with a round back design for neat, efficient installations
- Conduit hubs have tapered threads and integral bushings for protection of wire insulation
- Many shapes and trade sizes available
- Sheet-steel wedge nut cover is provided with integral gasket. The wedge nut design facilitates installation and removal. Nuts and screws are held captive in cover
- Cover screws are stainless steel with a combination slotted and Phillips head, for easy installation and superior corrosion protection

**Standard Materials:**

- Body – Feraloy® iron alloy
- Gasket – urethane
- Cover – sheet steel
- Cover screws – stainless steel

**Standard Finishes:**

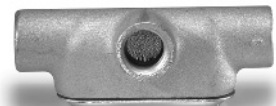
- Feraloy – electrogalvanized with aluminum acrylic paint
- Sheet steel – electrogalvanized

**Certifications and Complies:**

- UL Standard: 514B
- CSA Standard: C22.2 No. 18

**Ordering Information:**

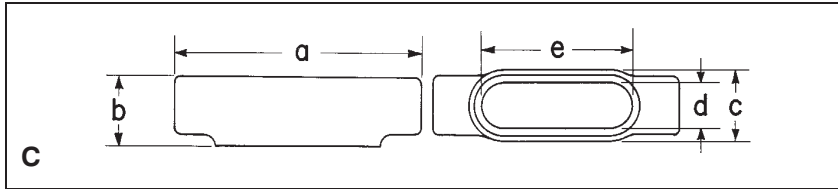
Trade Size	Shape	Cat. #
1/2"	C	C17-CG
3/4"	C	C27-CG
1"	C	C37-CG
1 1/4"	C	C47-CG
1 1/2"	C	C57-CG
2"	C	C67-CG
<hr/>		
1/2"	LB	LB17-CG
3/4"	LB	LB27-CG
1"	LB	LB37-CG
1 1/4"	LB	LB47-CG
1 1/2"	LB	LB57-CG
2"	LB	LB67-CG
<hr/>		
1/2"	LL	LL17-CG
3/4"	LL	LL27-CG
1"	LL	LL37-CG
1 1/4"	LL	LL47-CG
1 1/2"	LL	LL57-CG
2"	LL	LL67-CG
<hr/>		
1/2"	LR	LR17-CG
3/4"	LR	LR27-CG
1"	LR	LR37-CG
1 1/4"	LR	LR47-CG
1 1/2"	LR	LR57-CG
2"	LR	LR67-CG
<hr/>		
1/2"	T	T17-CG
3/4"	T	T27-CG
1"	T	T37-CG
1 1/4"	T	T47-CG
1 1/2"	T	T57-CG
2"	T	T67-CG
<hr/>		
1/2"	TB	TB17-CG
3/4"	TB	TB27-CG
1"	TB	TB37-CG
1 1/4"	TB	TB47-CG
1 1/2"	TB	TB57-CG
2"	TB	TB67-CG
<hr/>		
1/2"	X	X17-CG
3/4"	X	X27-CG
1"	X	X37-CG
1 1/4"	X	X47-CG
1 1/2"	X	X57-CG
2"	X	X67-CG



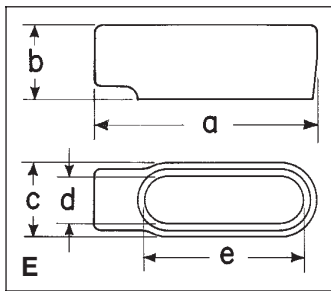
Note: Form 7 Condulets and covers are available in additional configurations, sizes and materials. For a complete listing of Form 7, Form 8 and Mark 9 conduit bodies and covers see pages 6 and 7.

## Dimensions

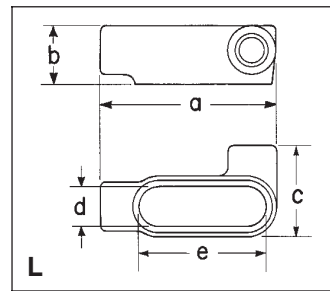
1F Conduit Outlet Bodies



Size	1/2	3/4	1	1 1/4	1 1/2	2	2 1/2	3	3 1/2	4
<b>Form 7 C</b>										
a	5 9/8	6	7	7 7/16	8 3/16	9 3/16	12	11 3/4		
b	1 3/8	1 5/8	1 7/8	2 5/16	2 9/16	3 1/8	3 5/8	4 3/8		
c	1 3/8	1 9/16	1 3/4	2 3/16	2 7/16	3	4 1/4	4 1/4		
d	1 5/16	1 1/8	1 3/8	1 3/4	1 15/16	2 7/16	3 9/16	3 9/16		
e	3 3/16	3 13/16	4 1/2	5	5 7/16	6 3/8	8 5/8	8 5/8		
<b>Form 8 C</b>										
a	5 11/16	6 9/32	7 5/16	8 1/2	10 3/8	12 1/4	15 5/8	15 5/8		
b	1 7/16	1 11/16	1 15/16	2 3/8	2 29/32	3 9/16	4 7/16	4 13/16		
c	1 3/8	1 3/16	1 3/4	2 3/16	2 3/4	3 3/4	5	5		
d	1	1 3/16	1 3/8	1 3/4	2 1/8	3	4 1/4	4 1/4		
e	3 5/16	3 15/16	4 9/16	5 5/16	6 1/2	8 9/16	10 7/8	10 7/8		
<b>Mark 9 C</b>										
a	5	5 11/16	6 19/32	7 1/2	8 1/4	10 1/2	15 5/8	15 5/8	18 3/4	18 3/4
b	1 3/8	1 5/8	1 7/8	2 1/2	2 3/4	3 7/16	4 7/16	4 13/16	5 11/16	5 15/16
c	1 3/8	1 9/16	1 3/4	2 3/16	2 1/2	3 9/16	5	5	6 1/4	6 1/4
d	1 3/16	1 3/8	1 1/2	1 15/16	2 1/4	2 7/8	4 1/4	4 1/4	5 7/16	5 7/16
e	3 3/16	3 15/16	4 9/16	5 5/16	6	8 1/16	10 7/8	10 7/8	13 7/16	13 7/16



Size	1/2	3/4	1
<b>Form 7 E</b>			
a	4 9/16	5 3/16	6
b	1 3/8	1 5/8	1 7/8
c	1 3/8	1 9/16	1 3/4
d	1 9/16	1 1/8	1 3/8
e	3 3/16	3 13/16	4 1/2

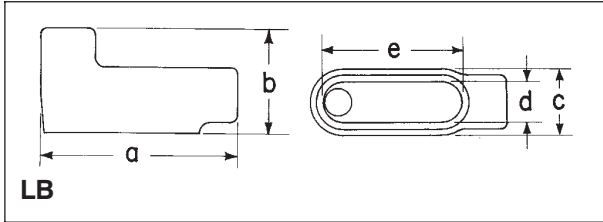


Size	1/2	3/4	1	1 1/4	1 1/2	2
<b>Form 7 L</b>						
a	4 9/16	5 3/16	6	6 1/2	7 1/8	8 3/8
b	1 3/8	1 5/8	1 7/8	2 5/16	2 9/16	3 1/8
c	2 1/4	2 7/16	2 3/4	3 3/16	3 9/16	4 1/8
d	1 5/16	1 1/8	1 3/8	1 3/4	1 15/16	2 7/16
e	3 3/16	3 13/16	4 1/2	5	5 7/16	6 3/8

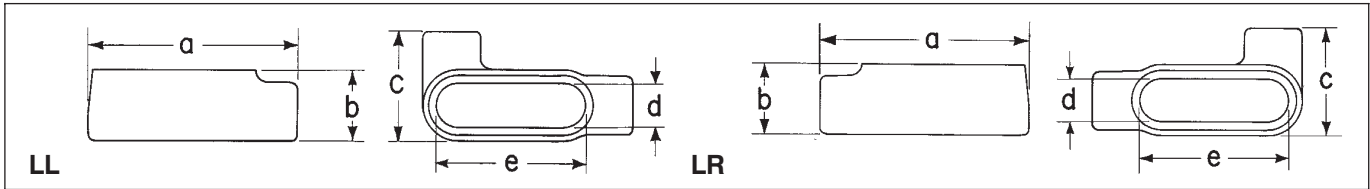
# 1F Condulet® Conduit Outlet Bodies

## Dimensions

1F Conduit Outlet Bodies



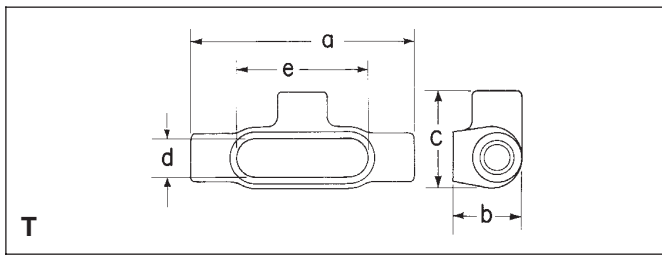
Size	1/2	3/4	1	1 1/4	1 1/2	2	2 1/2	3	3 1/2	4
<b>Form 7 LB</b>										
a	4 9/16	5 3/16	6	6 1/2	7 1/8	8 1/8	10 1/2	10 1/2	12 1 1/16	12 1 1/16
b	2 1/4	2 1/2	2 7/8	3 5/16	3 11/16	4 1/4	5 1/8	5 7/8	6 9/16	7 1/16
c	1 3/8	1 9/16	1 3/4	2 3/16	2 7/16	3	4 1/4	4 1/4	5 1/4	5 1/4
d	1 5/16	1 1/8	1 3/8	1 3/4	1 5/8	2 7/16	3 9/16	3 9/16	4 1/2	4 1/2
e	3 3/16	3 13/16	4 1/2	5	5 7/16	6 3/8	8 3/8	8 3/8	10 1/4	10 1/4
<b>Form 8 LB</b>										
a	4 15/16	5 9/16	6 15/32	7 17/32	9 1/8	11	13 15/16	13 15/16	16 7/8	16 7/8
b	2 7/32	2 7/16	2 13/16	3 1 1/32	4 1/32	4 13/16	6 1/8	6 1/2	7 9/16	7 13/16
c	1 3/8	1 9/16	1 3/4	2 3/16	2 3/4	3 3/4	5	5	6 1/4	6 1/4
d	1	1 1/16	1 3/8	1 3/4	2 1/8	3	4 1/4	4 1/4	5 7/16	5 7/16
e	3 5/16	3 15/16	4 9/16	5 5/16	6 1/2	8 9/16	10 7/8	10 7/8	13 7/16	13 7/16
<b>Mark 9 LB</b>										
a	4 19/32	5 1/4	6 3/32	7 1/32	7 3/4	10 1/32	13 15/16	13 15/16	16 7/8	16 7/8
b	2 1/8	2 13/32	2 27/32	3 15/32	3 3/4	4 15/32	6 1/8	6 1/2	7 9/16	7 13/16
c	1 3/8	1 9/16	1 3/4	2 3/16	2 1/2	3 3/16	5	5	6 1/4	6 1/4
d	1 3/16	1 3/8	1 1/2	1 5/16	2 1/4	2 7/8	4 1/4	4 1/4	5 7/16	5 7/16
e	3 5/16	3 15/16	4 9/16	5 5/16	6	8 1/16	10 7/8	10 7/8	13 7/16	13 7/16



Size	1/2	3/4	1	1 1/4	1 1/2	2	2 1/2	3	3 1/2	4
<b>Form 7 LL &amp; LR</b>										
a	4 9/16	5 3/16	6	6 1/2	7 1/8	8 1/8	10 1/2	10 1/2	12 1 1/16	12 1 1/16
b	1 3/8	1 5/8	1 7/8	2 5/16	2 9/16	3 1/8	3 5/8	4 3/8	4 7/8	5 3/8
c	2 1/4	2 7/16	2 3/4	3 3/16	3 9/16	4 1/8	5 3/4	5 3/4	6 15/16	6 15/16
d	1 5/16	1 1/8	1 3/8	1 3/4	1 5/8	2 7/16	3 9/16	3 9/16	4 1/2	4 1/2
e	3 3/16	3 13/16	4 1/2	5	5 7/16	6 3/8	8 3/8	8 3/8	10 1/4	10 1/4
<b>Form 8 LL &amp; LR</b>										
a	4 15/16	5 9/16	6 15/32	7 17/32	9 1/8	11	13 15/16	13 15/16	16 7/8	16 7/8
b	1 7/16	1 11/16	1 15/16	2 3/8	2 25/32	3 9/16	4 7/16	4 13/16	5 1 1/16	5 1 1/16
c	2 5/32	2 5/16	2 5/8	3 5/32	4	5	6 1 1/16	6 1 1/16	7 1 1/16	7 1 1/16
d	1	1 1/16	1 3/8	1 3/4	2 1/8	3	4 1/4	4 1/4	5 7/16	5 7/16
e	3 5/16	3 15/16	4 9/16	5 5/16	6 1/2	8 9/16	10 7/8	10 7/8	13 7/16	13 7/16
<b>Mark 9 LL &amp; LR</b>										
a	4 19/32	5 1/4	6 3/32	7 1/32	7 3/4	10 1/32	13 15/16	13 15/16	16 7/8	16 7/8
b	1 3/8	1 5/8	1 7/8	2 1/2	2 3/4	3 7/16	4 7/16	4 13/16	5 1 1/16	5 15/16
c	2 1/8	2 3/8	2 5/8	3 3/32	3 3/16	4 1/8	5 1/16	6 1 1/16	7 1/8	8 1/8
d	1 3/16	1 3/8	1 1/2	1 5/16	2 1/4	2 7/8	4 1/4	4 1/4	5 7/16	5 7/16
e	3 5/16	3 15/16	4 9/16	5 5/16	6	8 1/16	10 7/8	10 7/8	13 7/16	13 7/16

## Dimensions

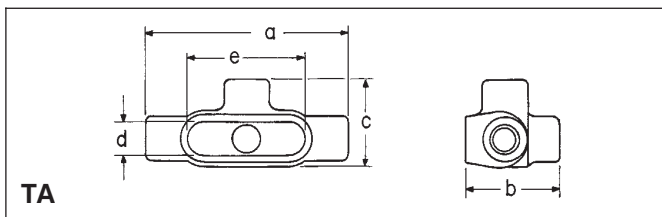
1F Conduit Outlet Bodies



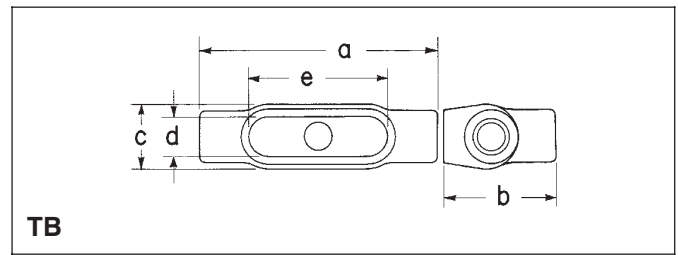
Size	a	b	c	d	e
<b>Form 7T</b>					
1/2	5 7/8	1 3/4	2 7/16	1 5/16	3 3/16
3/4	6 1/4	2	2 5/8	1 1/8	3 13/16
1	7 1/4	2 1/4	3	1 3/8	4 1/2
1 1/4	7 7/16	2 5/16	3 3/16	1 3/4	5
1 1/2	8 3/16	2 9/16	3 9/16	1 15/16	5 7/16
2	9 3/16	3 1/8	4 1/8	2 7/16	6 3/8
2 1/2	12	3 3/8	5 3/4	3 9/16	8 3/8
3	12 1/16	4 3/8	5 3/4	3 9/16	8 3/8
3 1/2	14 5/16	4 7/8	6 15/16	4 1/2	10 1/4
4	14 5/16	5 3/8	6 15/16	4 1/2	10 1/4

Size	a	b	c	d	e
<b>Form 8T</b>					
1/2	5 11/16	1 3/4	2 5/32	1	3 5/16
3/4	6 9/32	2	2 5/16	1 3/16	3 15/16
1	7 7/16	2 1/4	2 5/8	1 3/8	4 9/16
1 1/4	8 1/2	2 5/8	3 5/32	1 3/4	5 5/16
1 1/2	10 3/8	2 25/32	4	2 1/8	6 1/2
2	12 1/4	3 9/16	5	3	8 9/16
2 1/2	15 5/8	4 7/16	6 11/16	4 1/4	10 7/8
3	15 5/8	4 13/16	6 11/16	4 1/4	10 7/8

Size	a	b	c	d	e
<b>Mark 9T</b>					
1/2	5	1 3/8	2 1/8	1 3/16	3 5/16
3/4	5 11/16	1 9/8	2 3/8	1 3/8	3 15/16
1	6 19/32	1 7/8	2 5/8	1 1/2	4 9/16
1 1/4	7 1/2	2 1/2	3 3/32	1 15/16	5 5/16
1 1/2	8 1/4	2 3/4	3 7/16	2 1/4	6
2	10 1/2	3 7/16	4 1/8	2 7/8	8 1/16
2 1/2	15 5/8	4 7/16	6 11/16	4 1/4	10 7/8
3	15 5/8	4 13/16	6 11/16	4 1/4	10 7/8
3 1/2	18 3/4	5 11/16	8 1/8	5 7/16	13 7/16
4	18 3/4	5 15/16	8 1/8	5 7/16	13 7/16



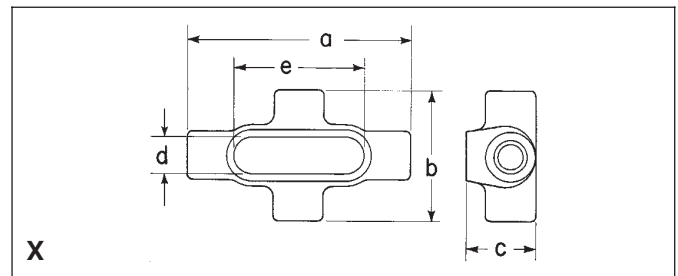
Size	a	b	c	d	e
<b>Form 7TA</b>					
1/2	5 5/8	2 5/8	2 7/16	1 5/16	3 3/16
3/4	6 1/4	2 7/8	2 5/8	1 1/8	3 13/16
1	7 1/4	3 1/4	3	1 3/8	4 1/2
1 1/4	7 7/16	3 9/16	3 3/16	1 3/4	5
1 1/2	8 3/16	3 11/16	3 9/16	1 15/16	5 7/16
2	9 3/16	4 1/4	4 1/8	2 7/16	6 3/8



Size	a	b	c	d	e
<b>Form 7TB</b>					
1/2	5 5/8	2 5/8	1 9/16	1 5/16	3 3/16
3/4	6 1/4	2 7/8	1 3/4	1 1/8	3 13/16
1	7 1/4	3 1/4	2	1 3/8	4 1/2
1 1/4	7 7/16	3 5/16	2 3/16	1 3/4	5
1 1/2	8 3/16	5	2 7/16	1 15/16	5 7/16
2	9 3/16	6 1/8	3	2 7/16	6 3/8

Size	a	b	c	d	e
<b>Form 8TB</b>					
1/2	5 11/16	2 17/32	1 3/8	1	3 5/16
3/4	6 9/32	2 3/4	1 9/16	1 3/16	3 15/16
1	7 7/16	3 1/8	1 3/4	1 3/8	4 9/16
1 1/4	8 1/2	3 11/32	2 3/16	1 3/4	5 5/16
1 1/2	10 3/8	4 1/32	2 3/4	2 1/8	6 1/2
2	12 1/4	4 13/16	3 3/4	3	8 9/16

Size	a	b	c	d	e
<b>Mark 9TB</b>					
1/2	5	2 1/8	1 3/8	1 3/16	3 5/16
3/4	5 11/16	2 13/32	1 9/16	1 3/8	3 15/16
1	6 19/32	2 27/32	1 3/4	1 1/2	4 9/16
1 1/4	7 1/2	3 15/32	2 3/16	1 15/16	5 5/16
1 1/2	8 11/32	3 7/8	2 1/2	2 5/32	5 7/8
2	10 5/8	4 19/32	3 7/32	2 13/16	8 3/32



Size	a	b	c	d	e
<b>Form 7X</b>					
1/2	5 5/8	3 5/16	1 3/4	1 5/16	3 3/16
3/4	6 1/4	3 1/2	2	1 1/8	3 13/16
1	7 1/4	4	2 1/4	1 3/8	4 1/2
1 1/4	7 7/16	4 1/8	2 5/16	1 3/4	5
1 1/2	8 3/16	4 5/8	2 9/16	1 15/16	5 7/16
2	9 3/16	5 3/16	3 1/8	2 7/16	6 3/8

Size	a	b	c	d	e
<b>Form 8X</b>					
1/2	5 11/16	2 29/32	1 3/4	1	3 5/16
3/4	6 9/32	3 1/16	2	1 3/16	3 15/16
1	7 7/16	3 1/2	2 1/4	1 3/8	4 9/16
1 1/4	8 1/2	4 1/8	2 5/8	1 3/4	5 5/16
1 1/2	10 3/8	5 1/4	2 15/32	2 1/8	6 1/2
2	12 1/4	6 1/4	3 9/16	3	8 9/16

Size	a	b	c	d	e
<b>Mark 9X</b>					
1/2	5 11/16	2 29/32	1 3/4	1	3 5/16
3/4	6 9/32	3 1/16	2	1 3/16	3 15/16
1	7 7/16	3 1/2	2 1/4	1 3/8	4 9/16