



# CEM36007T

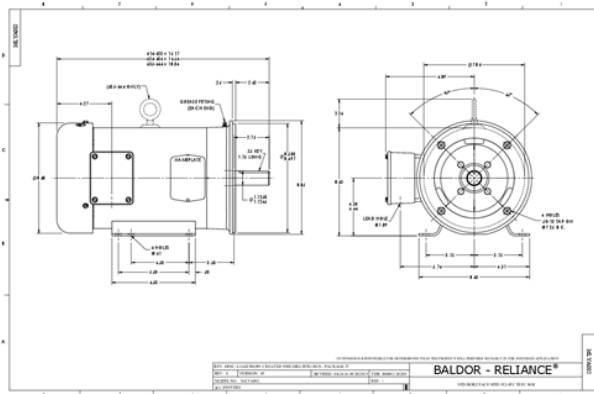
## 1.1KW/1.5HP, 1165RPM, 3PH, 60HZ, 182TC, 3632M



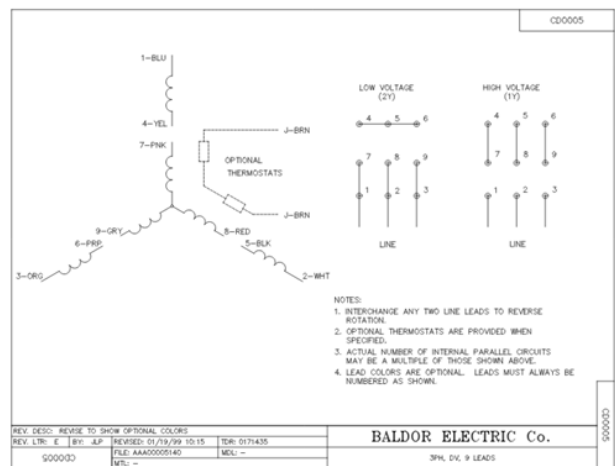
Ship Weight	72.000 LB
UPC	781568757345

### Drawings

#### Dimension Sheet



#### Connection Diagram



**⚠ CAD files for this product are currently unavailable.**  
Visit one of our Part Community Portals for further assistance.

## Nameplate

<b>CAT.NO.</b>							
<b>SPEC.</b>	36A002S916G2						
<b>KW/HP</b>	1.1KW/1.5HP						
<b>VOLTS</b>	230/460						
<b>AMP</b>	4.8/2.4						
<b>RPM</b>	1165						
<b>FRAME</b>	182TC		<b>HZ</b>	60		<b>PH</b>	3
<b>SER.F.</b>	1.15	<b>CODE</b>	K	<b>DES</b>	B	<b>CL</b>	F
<b>NEMA-NOM-EFF</b>	87.5	<b>PF</b>	67				
<b>RATING</b>	40C AMB-CONT						
		<b>USABLE AT 208V</b>				N/A	
<b>DE</b>	6206	<b>ODE</b>	6205				
<b>ENCL</b>	TEFC	<b>SN</b>					

NP3192L

## Performance

### Performance at 460 V, 60 Hz, 1.5 hp

Typical performance; not guaranteed values.

### General Characteristics

<b>Full Load Torque</b>	0 LB-FT	<b>Start Configuration</b>	DOL
<b>No-Load Current</b>	0 A	<b>Break-Down Torque</b>	23.8 LB-FT
<b>Line-Line Res. @ 25° C</b>	7.3716 Ohms A Ph / 0 Ohms B Ph	<b>Pull-Up Torque</b>	12.5 LB-FT
<b>Temp. Rise @ Rated Load</b>	34° C	<b>Locked-Rotor Torque</b>	15.3 LB-FT
<b>Temp. Rise @ S.F. Load</b>	41° C	<b>Starting Current</b>	15.8 A

### Load Characteristics

Rated Load	0%	25%	50%	75%	100%	125%	150%	S.F.
<b>Power Factor</b>	6.0	30.0	48.0	59.0	67.0	71.0	74.0	69.0
<b>Efficiency</b>	0.0	79.1	86.0	87.5	87.5	86.5	85.2	86.9
<b>Speed (RPM)</b>	1,199	1,192	1,185	1,177	1,168	1,158	1,148	1,162
<b>Line Amps</b>	1.47	1.57	1.77	2.07	2.43	2.88	3.36	2.70

### Performance Curves