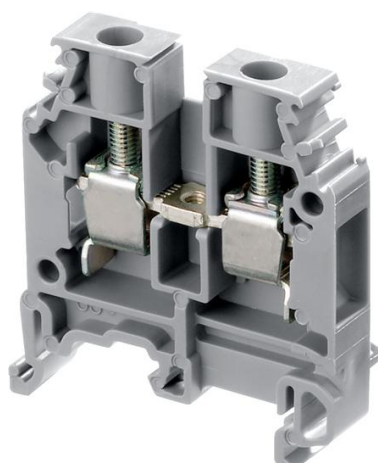


1SNA115118R1100

M6/8 GREY TERMINAL BLOCK STD



- Flexibility: snap onto symmetrical and asymmetrical rails, - Many colors are available in addition to our generic grey to help you quickly identify any specific functions.

General Information

Extended Product Type	• M6/8
Product ID	• 1SNA115118R1100
EAN	• 3472591151183
Catalog Description	• M6/8 Screw Clamp Terminal Blocks - Feed-through - Grey
Long Description	• - Flexibility: snap onto symmetrical and asymmetrical rails, - Many colors are available in addition to our generic grey to help you quickly identify any specific functions.

Ordering

Minimum Order Quantity	50 piece
Customs Tariff Number	85369010

Dimensions

Product Net Width	8 mm
Product Net Height	44.5 mm
Product Net Length	40.5 mm
Product Net Weight	12.8 g

Container Information

Package Level 1 Units	50 piece
Package Level 1 Width	81 mm
Package Level 1 Height	47 mm
Package Level 1 Gross Weight	0.64 kg
Package Level 1 EAN	3472591151183
Package Level 2 Units	1500 piece
Package Level 2 Width	300 mm
Package Level 2 Height	300 mm
Package Level 2 Gross Weight	19.2 kg
Package Level 3 Units	36000 piece

Environmental

Ambient Air Temperature	Operation -55 ... +110 °CStorage -55 ... +110 °C
Environmental Information	1SND220001E1002
RoHS Status	Following EU Directive 2002/95/EC August 18, 2005 and amendment

Additional Information

Color	Grey
Connecting Capacity Main Circuit	Screw Clamp / Flexible 1x 0.5 ... 6 mm ² Screw Clamp / Rigid 1x 0.5 ... 10 mm ² Screw Clamp / With Insulated Ferrule 1x 6 mm ²
Connection Type	Screw Clamp
Degree of Protection	acc. to IEC 60529, IEC 60947-1, EN 60529 Main Terminals IP20
Dielectric Test Voltage	2000 V
Function	Feed-through
Gauge Type	A5
Insulation Material	Polyamide
Mounting on DIN Rail	G32 (32 x 15 mm Mounting Rail) acc. to IEC 60715TH35-7.5 (35 x 7.5 mm Mounting Rail) acc. to IEC 60715TH35-15 (35 x 15 mm Mounting Rail) acc. to IEC 60715
Number of Levels	1
Pollution Degree	3
Power Loss	1.3 W
Rated CrossSection	6 mm ²
Rated Current In	Main Circuit 41 A
Rated Impulse Withstand Voltage Uimp	8000 V
Rated Shorttime Withstand Current Icw	for 1 s 720 A
Rated Voltage Ur	1000 V

Recommended Screw Driver	4.5 mm
Spacing	8 mm
Tightening Torque	acc. IEC 60947-1 0.8 N·mManufacturer 1 N·m
Wire Stripping Length	12.0 mm

Technical UL/CSA

Maximum Operating Voltage ULCSA	Main Circuit 600 V
Connecting Capacity ULCSA	Stranded 8 AWG
Connecting Capacity Main Circuit ULCSA	Screw Clamp / Flexible 1x 22 ... 8 AWGScrew Clamp / Rigid 1x 22 ... 8 AWG
Flammability According to UL94	V-0

Classifications

ETIM 6	EC000897 - Feed-through terminal block
ETIM 5	EC000897 - Feed-through terminal block
ETIM 4	EC000897 - Feed-through terminal block
Object Classification Code	X

