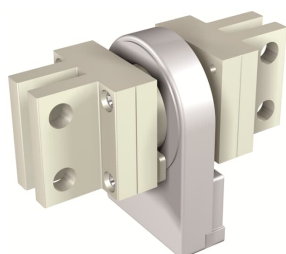


PRODUCT-DETAILS

# EXT CS N E1.2-E2.2-XT7-XT7M 2000A

## EXT CS N E1.2-E2.2-XT7-XT7M 2000A



### General Information

Extended Product Type	EXT CS N E1.2-E2.2-XT7-XT7M 2000A
Product ID	1SDA073736R1
EAN	8015644776695
Catalog Description	EXT CS N E1.2-E2.2-XT7-XT7M 2000A
Long Description	CURRENT SENSOR FOR EXTERNAL NEUTRAL E1.2-E2.2-XT7-XT7M 2000A

### Ordering

EAN	8015644776695
Minimum Order Quantity	1 piece
Customs Tariff Number	85389099

### Dimensions

Product Net Width	125 mm
Product Net Height	185 mm
Product Net Depth / Length	225 mm
Product Net Weight	4.1 kg

### Container Information

Package Level 1 Units	1 piece
-----------------------	---------

Package Level 1 Width	125 mm
Package Level 1 Height	185 mm
Package Level 1 Depth / Length	225 mm
Package Level 1 Gross Weight	5 kg
Package Level 1 EAN	8015644776695

## Environmental

RoHS Status	Following EU Directive 2011/65/EU and Amendment 2015/863 July 22, 2019
-------------	--

## Additional Information

Configuration Type	Loose or configurable
Order Multiple	1 piece
Product Main Type	Accessories for Emax 2, Accessories for Tmax XT
Product Name	Accessory
Product Type	Accessory
Standards	IEC
Suitable For	XT7-XT7M, E1.2, E2.2
Suitable for Product Class	SACE Tmax XT, SACE Emax 2

## Certificates and Declarations (Document Number)

Data Sheet, Technical Information	1SDC200023D0209 1SDC210100D0204
Declaration of Conformity - CE	1SDL000165R0019 1SDL000165R0020
Instructions and Manuals	1SDH001000R0506

## Classifications

ETIM 6	EC002498 - Accessories for low-voltage switch technology
ETIM 7	EC002498 - Accessories for low-voltage switch technology
Object Classification Code	Q
WEEE Category	5. Small Equipment (No External Dimension More Than 50 cm)

## Categories

Low Voltage Products and Systems → Circuit Breakers → Air Circuit Breakers → Accessories for Emax 2

