

CONTINUOUS HINGE TWO-DOOR WITH 3-POINT LATCH, TYPE 12

INDUSTRY STANDARDS

UL 508A Listed; Type 12; File No. E61997
 cUL Listed per CSA C22.2 No 94; Type 12; File No. E61997

NEMA/EEMAC Type 12
 CSA File No. 42186; Type 12
 IEC 60529, IP55

APPLICATION

For indoor applications requiring stainless steel, enclosure features overlapping doors and a centerpost-free interior for easy panel and component installation. The enclosure is secured by a single key-locking handle and three-point latching.

SPECIFICATIONS

- 14 gauge Type 304 stainless steel
- Seams continuously welded and ground smooth
- Rolled lip around all sides of enclosure body opening
- Gasketed overlapping doors eliminate need for centerpost
- External mounting brackets
- Plated steel 3-point latching mechanism and keylocking handle
- Easily removable doors by pulling heavy-gauge continuous hinge pin
- Data pocket is high-impact thermoplastic
- Collar studs provided for mounting optional panels
- Bonding provision on doors; grounding studs on body

FINISH

Doors, sides, top and bottom have smooth #4 brushed finish.

ACCESSORIES

Floor Stand Kit, Stainless Steel
 PANELITE Enclosure Lights
 Panels for Type 3R, 4, 4X, 12 and 13 Enclosures
 Steel, Stainless Steel and Non-Metallic Window Kits
 H2OMIT Vent Drains, Type 4X
 H2OMIT Thermoelectric Dehumidifier

MODIFICATION AND CUSTOMIZATION

Hoffman excels at modifying and customizing products to your specifications. Contact your local Hoffman sales office or distributor for complete information.

BULLETIN: A12SW

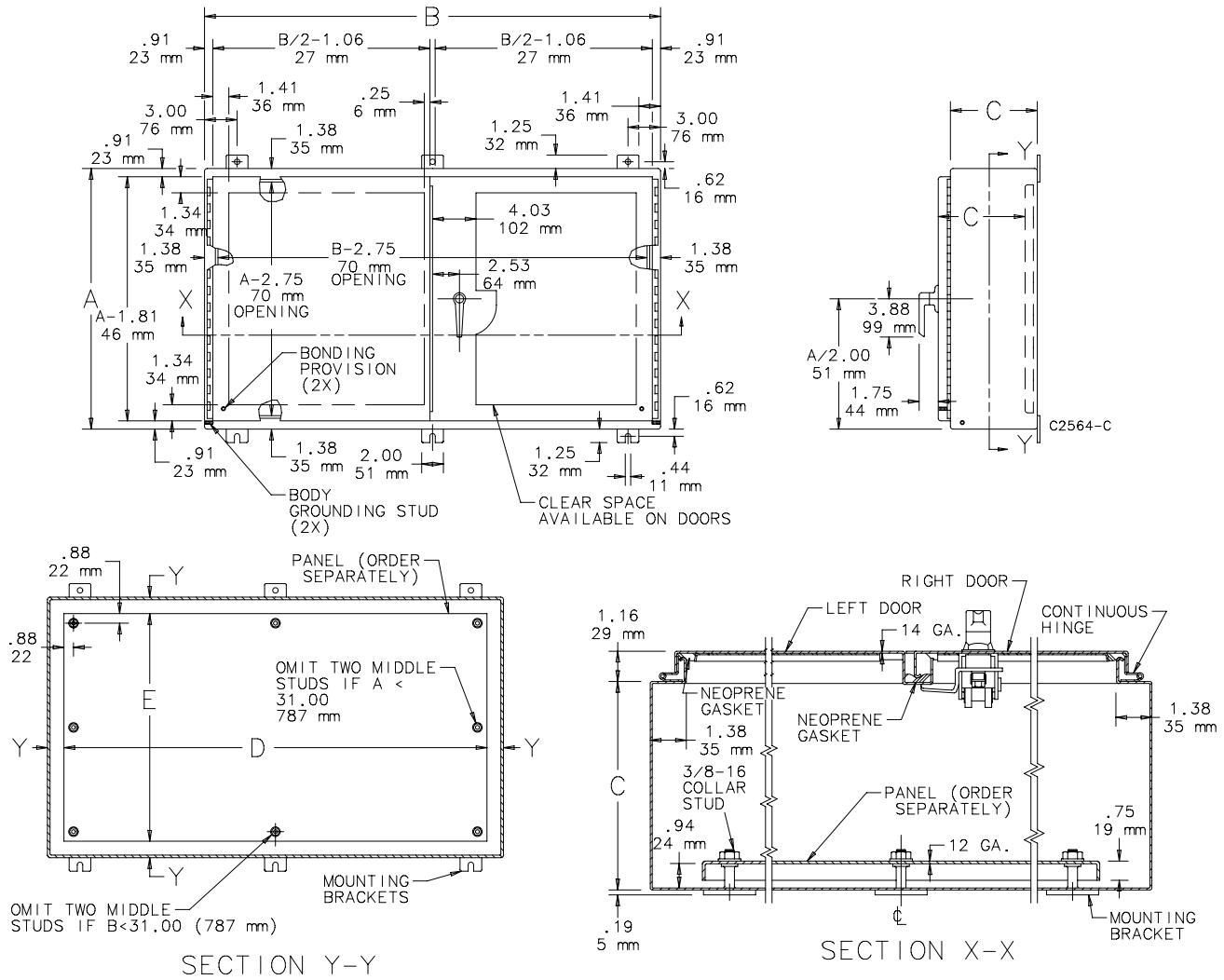
Standard Product

Catalog Number	AxBxC in./mm	Panel	Conductive Panel	Panel Gauge	Panel Size D x E in./mm	Y in./mm
A244208WFSSLP	24.00 x 42.00 x 8.00 610 x 1067 x 203	A42P24	A42P24G	12	39.00 x 21.00 991 x 533	1.50 38
A244808WFSSLP	24.00 x 48.00 x 8.00 610 x 1219 x 203	A48P24	A48P24G	12	45.00 x 21.00 1143 x 533	1.50 38
A304210WFSSLP	30.00 x 42.00 x 10.00 762 x 1067 x 254	A42P30	A42P30G	12	39.00 x 27.00 991 x 686	1.50 38
A304810WFSSLP	30.00 x 48.00 x 10.00 762 x 1219 x 254	A48P30	A48P30G	12	45.00 x 27.00 1143 x 686	1.50 38
A306010WFSSLP	30.00 x 60.00 x 10.00 762 x 1524 x 254	A60P30	A60P30G	12	57.00 x 27.00 1448 x 686	1.50 38
A364212WFSSLP	36.00 x 42.00 x 12.00 914 x 1067 x 305	A42P36	A42P36G	12	39.00 x 33.00 991 x 838	1.50 38
A364812WFSSLP	36.00 x 48.00 x 12.00 914 x 1219 x 305	A48P36	A48P36G	12	45.00 x 33.00 1143 x 838	1.50 38
A366012WFSSLP	36.00 x 60.00 x 12.00 914 x 1524 x 305	A60P36	A60P36G	12	57.00 x 33.00 1448 x 838	1.50 38
A424212WFSSLP	42.00 x 42.00 x 12.00 1067 x 1067 x 305	A42P42	A42P42G	12	39.00 x 39.00 991 x 991	1.50 38
A424812WFSSLP	42.00 x 48.00 x 12.00 1067 x 1219 x 305	A48P42	A48P42G	12	45.00 x 39.00 1143 x 991	1.50 38
A426012WFSSALP	42.00 x 60.00 x 12.00 1067 x 1524 x 305	A60BFP42	A60BFP42G	10	56.00 x 38.00 1422 x 965	2.00 51
A484812WFSSLP	48.00 x 48.00 x 12.00 1219 x 1219 x 305	A48P48	A48P48G	10	44.00 x 44.00 1118 x 1118	2.00 51

Purchase panels separately. Optional stainless steel and aluminum panels are available for most sizes.

A424212WFSSLP, A424812WFSSLP, A426012WFSSALP enclosure backs have internal stiffeners.

A484812WFSSLP back is 12 gauge.



NOTE:
 Right door has large removable 12.00 x 12.00 (305mm x 305mm) data pocket. Exception: When $A = 24$ in. (610 mm) a small 6.00 x 6.00 (152mm x 152mm) data pocket is provided.