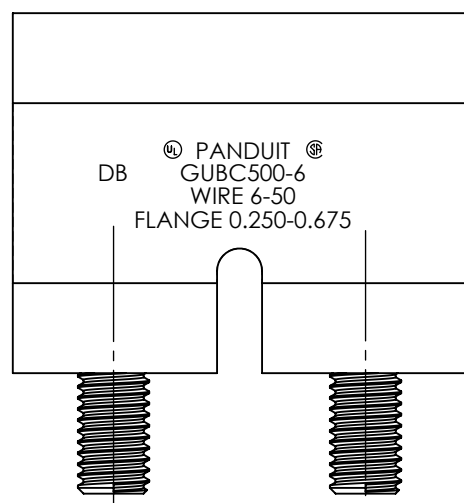
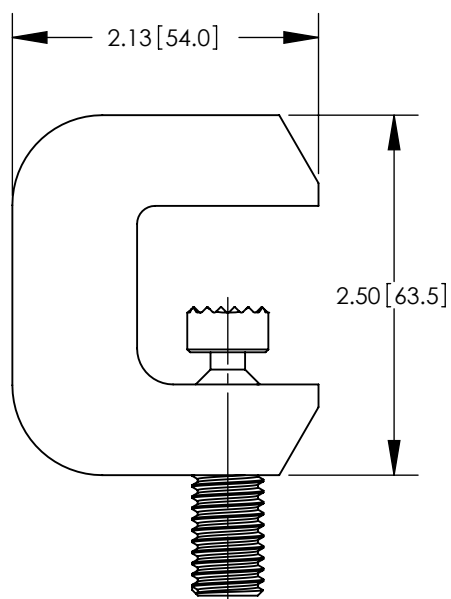
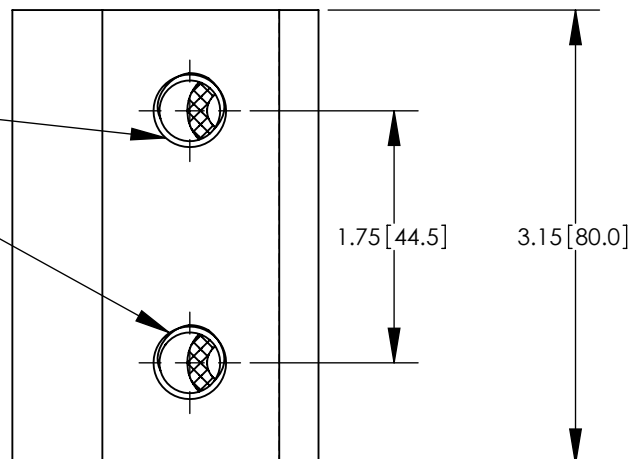


NOTES

1. DIMENSIONS IN PARENTHESIS ARE MILLIMETERS.
2. FITS WIDE RANGE OF STANDARD (ANGLED) AND WIDE FLANGE (PARALLEL) STRUCTURAL STEEL BEAMS
3. PROVIDES MOUNTING PAD SUITABLE FOR 2 HOLE COMPRESSION LUG.
4. UL 467 LISTED AND CSA 22.2 CERTIFIED FOR GROUNDING & BONDING SUITABLE FOR DIRECT BURIAL IN EARTH OR CONCRETE.
5. PRE-APPLIED ANTIOXIDANT COMPOUND ENSURES A HIGH QUALITY MECHANICAL AND ELECTRICAL BOND, SPEEDING INSTALLATION.
6. HARDWARE KIT (GLMHK) SOLD SEPERATLEY FOR MOUNTING COMPRESSION LUG TO BEAM CLAMP
7. MEETS IEEE STD 837-2002 AND REV 2014. SEE INSTRUCTION SHEET T-PMPI-290-PC ON WWW.PANDUIT.COM FOR FURTHER DETAILS

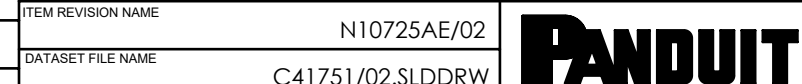
1/2-13 THREAD  
- FOR USE WITH 1/2" STUD HOLE, 1-3/4" SPACING,  
2 HOLE COMPRESSION LUGS



PANDUIT PART NUMBER	COPPER CONDUCTOR SIZE RANGE AWG [mm]	FLANGE THICKNESS IN [mm]	THREAD SIZE FOR LUG ATTACHMENT	HEX SIZE	STD. PKG QTY.
GUBC500-6	#6 AWG - 500 kcmil [16-240 SQ mm]	.250-.675 [6.3-17.1]	1/2-13	1/4	1

REV	DATE	BY	CHK	APR	DESCRIPTION	ECN
02	12/21	JHNU	JADE	JADE	REVISED NOTE 7 TO REFERENCE INSTRUCTION SHEET REVISED TITLE BLOCK	114242
01	12/10	JHNU	RGB	FLD	ADDED AGENCY LOGOS	N10725AE-C41751
00	4/08	JHNU	RGB	RGB	DRAWING RELEASED	

TITLE UNIVERSAL BEAM GROUNDING CLAMP (GUBC500-6) CUSTOMER DRAWING						
ITEM REVISION NAME		N10725AE/02				
DATASET FILE NAME		C41751/02.SLDDRW				
UNLESS OTHERWISE SPECIFIED, DIMENSIONAL TOLERANCES ARE: IN [mm]						
.X ± .XX ± .03		.XXX ± .005 ANGLES ± 1°				
DRAWN BY JHNU			DATE 4/08		CHK RGB	SCALE N/A
SHEET 1 OF 1						SIZE B



MATERIAL  
HIGH CONDUCTIVITY COPPER

DRAWING NUMBER  
C41751

THIRD ANGLE PROJECTION