

**CONTINUOUS HINGE WITH CLAMPS, EMC, TYPE 4X**

**INDUSTRY STANDARDS**

UL 50, 50E Listed; Type 4, 4X, 12; File No. E27567  
 cUL Listed per CSA C22.2 No 94; Type 4, 4X, 12; File No. E27567  
 UL 508A Listed; Type 4, 4X, 12; File No. E61997  
 cUL Listed per CSA C22.2 No 94; Type 4, 4X, 12; File No. E61997

NEMA/EEMAC Type 4, 4X, 12, 13  
 CSA File No. 42184: Type 4, 4X, 12  
 IEC 60529, IP66

## Standard Product

Catalog Number	AxBxC in./mm	UL Listed	Body Gauge	Cover Gauge	Stainless Steel Panel	Conductive Steel Panel	Panel Size D x E in./mm	Mounting G x H in./mm	Overall L x W in./mm	F in./mm	J in./mm	N in./mm	T in./mm	V in./mm	Y in./mm
A6044CHEMCSS	6.00 x 4.00 x 4.00 152 x 102 x 102	508A	16	16	A6P4SS	A6P4G	4.88 x 2.88 124 x 73	6.75 x 2.00 171 x 51	7.50 x 4.94 191 x 125	3.50 89	3.62 92	2.38 60	3.00 76	0.31 8	0.56 14
A606CHEMCSS	6.00 x 6.00 x 4.00 152 x 152 x 102	50, 50E	16	16	A6P6SS	A6P6G	4.88 x 4.88 124 x 124	6.75 x 4.00 171 x 102	7.50 x 6.94 191 x 176	3.50 89	3.62 92	2.38 60	5.00 127	0.31 8	0.56 14
A8064CHEMCSS	8.00 x 6.00 x 4.00 203 x 152 x 102	50, 50E	14	16	A8P6SS	A8P6G	6.75 x 4.88 171 x 124	8.75 x 4.00 222 x 102	9.50 x 6.94 241 x 176	3.50 89	3.62 92	1.38 35	5.00 127	0.25 6	0.62 16
A1008CHEMCSS	10.00 x 8.00 x 4.00 254 x 203 x 102	50, 50E	14	16	A10P8SS	A10P8G	8.75 x 6.88 222 x 175	10.75 x 6.00 273 x 152	11.50 x 8.94 292 x 227	3.50 89	3.62 92	1.38 35	7.00 178	0.25 6	0.62 16
A12106CHEMCSS	12.00 x 10.00 x 6.00 305 x 254 x 152	50, 50E	14	16	A12P10SS	A12P10G	10.75 x 8.88 273 x 225	12.75 x 8.00 324 x 203	13.50 x 10.94 343 x 278	5.50 140	5.62 143	2.38 60	9.00 229	0.25 6	0.62 16
A1212CHEMCSS	12.00 x 12.00 x 6.00 305 x 305 x 152	50, 50E	14	16	A12P12SS	A12P12G	10.75 x 10.88 273 x 276	12.75 x 10.00 324 x 254	13.50 x 12.94 343 x 329	5.50 140	5.62 143	2.38 60	11.00 279	0.25 6	0.62 16
A1412CHEMCSS	14.00 x 12.00 x 6.00 356 x 305 x 152	50, 50E	14	16	A14P12SS	A14P12G	12.75 x 10.88 324 x 276	14.75 x 10.00 375 x 254	15.50 x 12.94 394 x 329	5.50 140	5.62 143	2.38 60	11.00 279	0.25 6	0.62 16
A1614CHEMCSS	16.00 x 14.00 x 6.00 406 x 356 x 152	50, 50E	14	16	A16P14SS	A16P14G	14.75 x 12.88 375 x 327	16.75 x 12.00 425 x 305	17.50 x 14.94 445 x 379	5.50 140	5.62 143	2.38 60	13.00 330	0.25 6	0.62 16

Purchase panels separately.

**APPLICATION**

Use this enclosure in corrosive indoor or outdoor applications to contain stray electromagnetic interference (EMI) signals produced by internal components and to shield those components from external EMI/RFI interference.

**SPECIFICATIONS**

- 16 and 14 gauge Type 304 stainless steel
- Seams continuously welded and ground smooth
- Seamless foam-in-place gasket adjacent to monel mesh assures water-tight, dust-tight and EMI seal
- Stainless steel screws and clamps
- Removable door with continuous hinge
- Weldnuts provided for mounting optional panels and terminal kits
- Bonding provision on door

**FINISH**

Cover and sides of body have a smooth #4 brushed finish.

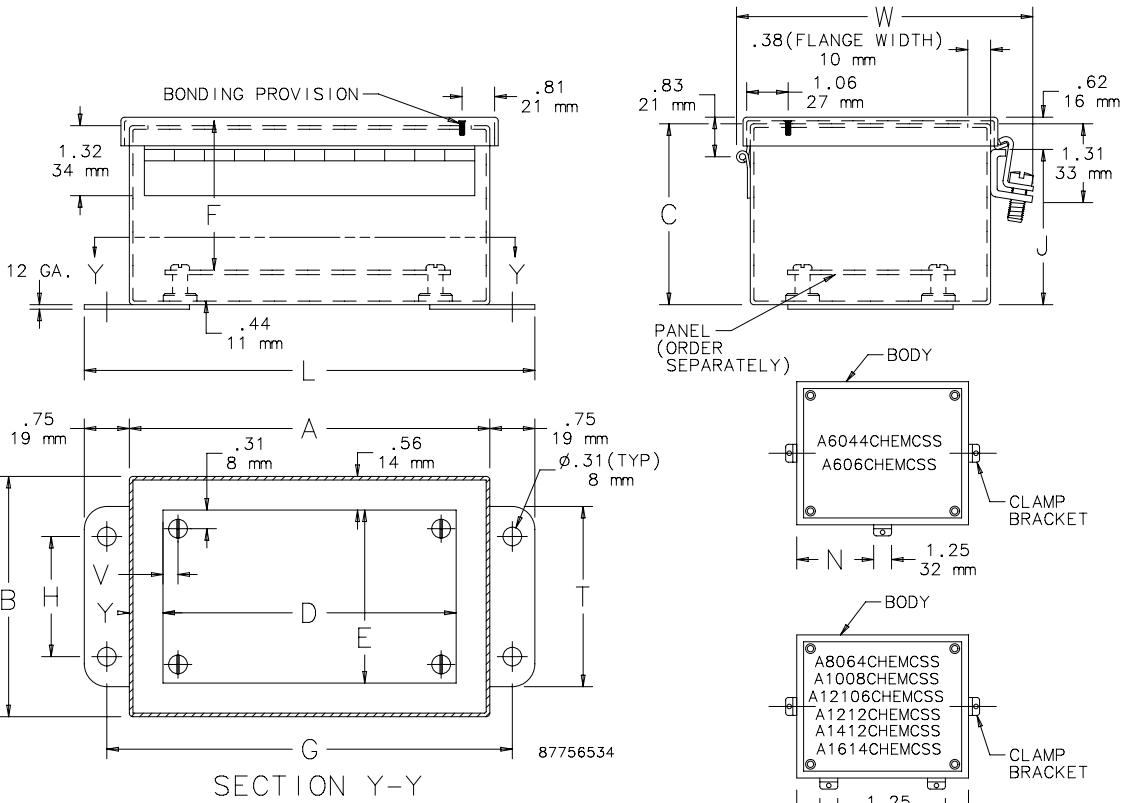
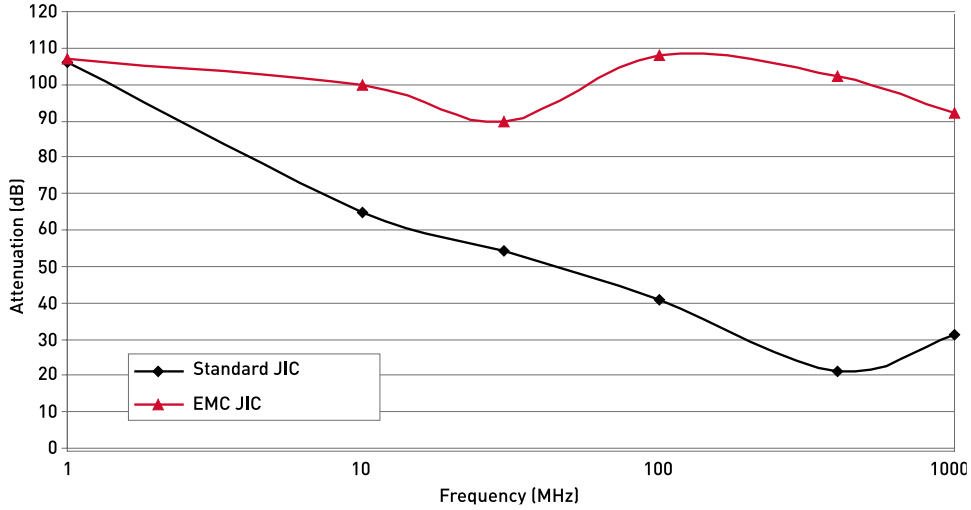
**ACCESSORIES**

Fast-Operating Clamp-Cover Junction Box Clamp Panels for Junction Boxes  
 Terminal Block Kit Assembly for Junction Boxes  
 Steel, Stainless Steel and Non-Metallic Window Kits

**BULLETIN: A51SE**

### Stainless Steel JIC Shielding Effectiveness

Standard Stainless Steel JIC Cabinet Compared to EMC Stainless Steel JIC Cabinet



- NOTE:
- Optional panels are 14 gauge steel, conductive steel or stainless steel.
  - Panel screws are No. 10-32 pan head.