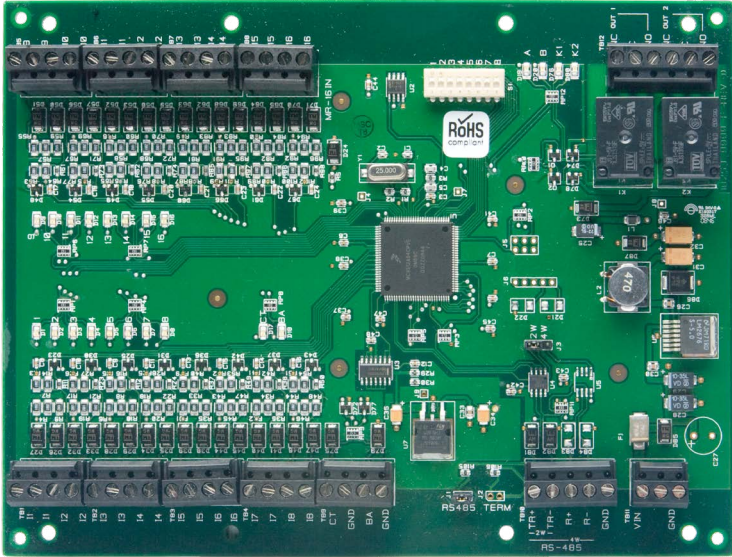


Input Control Panel

The Avigilon™ Access Control Manager (ACM)™ system supports open field hardware from Mercury Security allowing organizations to leverage investments in non-proprietary field hardware, with retrofit programs available for industry standard door hardware and card readers, including contact/contactless smart card, proximity, magnetic stripe and barcode.



The AC-MER-CON-MR16IN is a high performance interface panel for monitoring high concentrations of inputs with the Access Control Manager (ACM) system from Avigilon.

Based on the Mercury Security MR16in, each AC-MER-CON-MR16IN supports 16 general-purpose dry-contact inputs, configurable to be individually set for normally open, normally closed, supervised and non-supervised circuits. The AC-MER-CON-MR16IN provides access control and security monitoring through the AC-MER-CONT-1DR, AC-MER-CONT-2DR or the AC-MER-CONT-64DR intelligent controllers. The result is the flexibility, versatility and reliability required for demanding access control solutions.

The Access Control Manager system and Mercury Security open field hardware provide the ultimate platform to complete the Avigilon end-to-end security solution.

KEY FEATURES

- Compact footprint and RS-485 connectivity
- 12 or 24V DC input power support
- Supports being clustered or distributed to best suit the installation environment
- Two programmable Form C relay outputs are configurable for fail-safe or fail secure operation, supporting “On”, “Off”, and “Pulse”
- Inputs and the output relays support assignment to door related functions or to general purpose I/O
- Inputs support normally open, normally closed, supervised and non-supervised circuits
- Output relays are configurable for fail-safe or fail secure operation
- Capable of controlling outboard devices, by the condition of selected system devices locally without ACM intervention



Specifications

TECHNICAL SPECIFICATIONS		
Primary Power	12-24 V DC \pm 10%, 350mA maximum 12 V DC @ 300mA nominal 24 V DC @ 220mA nominal	
Communication	RS-485, 2-wire. 9600, 19200, 38400, or 115200 bps	
Inputs	16 General purpose: Programmable circuit type 2 Dedicated: Tamper and Power Monitor	
Outputs	Two Relays, Form-C, 5 Amp 28 V DC	
Cable requirements	Power: 18 AWG, 1 twisted pair RS-485: 24AWG, 120 ohm impedance, twisted pair with shield, 4,000' (1,200m) maximum Alarm inputs: 1 twisted pair, 30 ohms maximum Outputs: As required for the load	
Dimensions (W x L x H)	152mm x 203mm x 25mm; 6" x 8" x 1"	
Weight	9 oz. (250 g) nominal	
Temperature	Operating: 0° C to 70° C (32° F to 158° F) Storage: -55° C to 85° C (-67° F to 185° F)	
Humidity	0 - 95% Relative humidity (non-condensing)	
Standards	UL 294 Recognized, CE Compliant, RoHS	

ORDERING INFORMATION		
AC-MER-CON-MR16IN	Access Platform MR16in Multi-Device Interface Panel (Mercury MR16in)	

