



TI-420-35-250A

TI-420-35-250A, Current transformer with converter 4 ... 20 mA

Code: M70817.

- > Usefull diam.(mm): 35
- > Analog output: 4...20 mA
- > Measurement Range (A): 250
- > Input current: 250 A

Description

- Needs an output power supply of 10 ... 28 V dc
- Primary current: from 2.5 to 1500 A ~, depending on the type
- Secondary current: 4 ... 20 mA
- Internal diameter: from 35 to 105 mm, depending on the type
- Busbar dimensions: from 35 to 105 mm, depending on the type

Application

Used in power lines to obtain a current proportional to the primary current rated at 4 ... 20 mA in the secondary



TI-420-35-250A

Current transformers with converter

Code: M70817.

Specifications

Auxiliary power supply

| | |
|---------|---------------|
| Voltage | 10 ... 28 Vdc |
|---------|---------------|

Mechanical characteristics

| | |
|----------------------------------|--------------------|
| Size (mm) width x height x depth | 100 x 79 x 33 (mm) |
|----------------------------------|--------------------|

| | |
|-------------|------|
| Weight (kg) | 0,19 |
|-------------|------|

Environmental characteristics

| | |
|-----------------------|---------------|
| Operating temperature | -10°...+50 °C |
|-----------------------|---------------|

Specific technical characteristics of current sensors

| | |
|-----------------------|----|
| Inner diameter Ø (mm) | 35 |
|-----------------------|----|

| | |
|-------------------|---------------|
| Operating voltage | 0,72 kV~ max. |
|-------------------|---------------|

Current measurement circuit

| | |
|-------------------|------------|
| Nominal frequency | 50 / 60 Hz |
|-------------------|------------|

| | |
|-----------------------------|-------|
| Primary current measurement | 250 A |
|-----------------------------|-------|

| | |
|--------------------|--------|
| Permanent overload | 1,5 In |
|--------------------|--------|

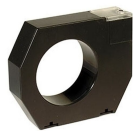
| | |
|----------------------|-------------|
| Transformation ratio | 4 ... 20 mA |
|----------------------|-------------|

Standards

| | |
|-----------|--|
| Standards | IEC 44-1, UNE 21 088-1, IEC 664, VDE0110, VDE0414, UL 94, IEC 1010-1, EN 61010-1 |
|-----------|--|

Measurement accuracy

| | |
|----------|----------|
| Accuracy | ±1,5% In |
|----------|----------|



TI-420-35-250A

Current transformers with converter

Code: M70817.

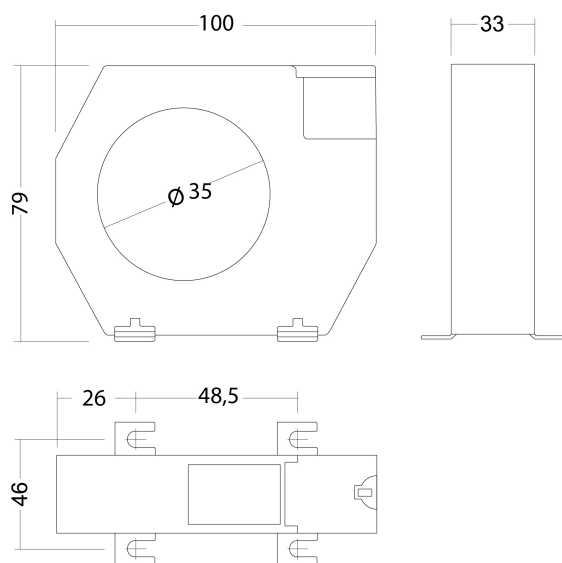
TI

Current transformer with converter 4 ... 20 mA

| CODE | TYPE | Measurement Range (A) | Usefull diam.(mm) |
|---------|------------------|-----------------------|-------------------|
| M70811. | TI-420-35-2.5A | 2.5 | 35 |
| M70812. | TI-420-35-5A | 5 | 35 |
| M70813. | TI-420-35-10A | 10 | 35 |
| M70814. | TI-420-35-20A | 20 | 35 |
| M70815. | TI-420-35-50A | 50 | 35 |
| M70816. | TI-420-35-100A | 100 | 35 |
| M70817. | TI-420-35-250A | 250 | 35 |
| M70821. | TI-420-70-100A | 100 | 70 |
| M70822. | TI-420-70-250A | 250 | 70 |
| M70823. | TI-420-70-500A | 500 | 70 |
| M70824. | TI-420-70-750A | 750 | 70 |
| M70831. | TI-420-105-250A | 250 | 105 |
| M70832. | TI-420-105-500A | 500 | 105 |
| M70833. | TI-420-105-750A | 750 | 105 |
| M70834. | TI-420-105-1000A | 1000 | 105 |
| M70835. | TI-420-105-1500A | 1500 | 105 |

For greater currents, use: transformer + transducer

Dimensions



Connections

